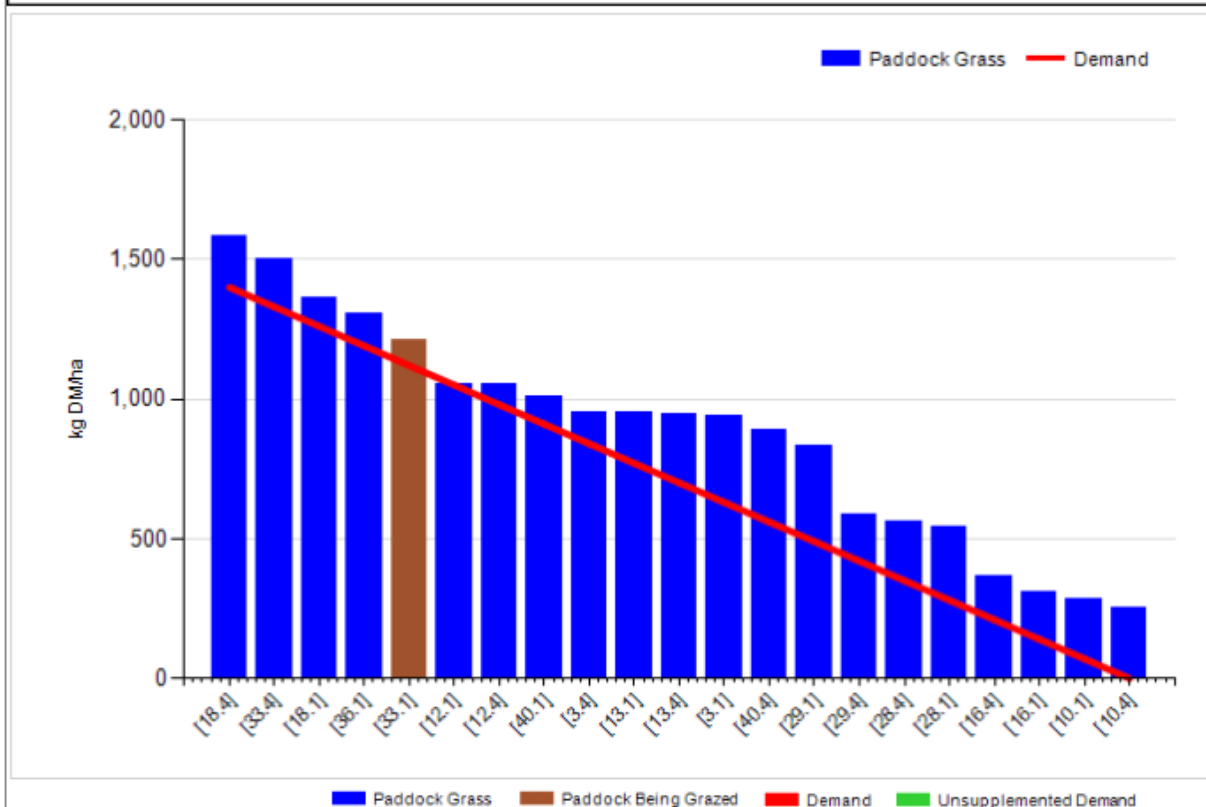


Johnstown Castle Winter Milk Herd- Weekly Management Notes

07/04/15

Grass Allocation/LU (kg DM/LU):	17.0	Growth Rate (kg/ha/day):	48
Total Livestock (LU):	52.0	Farm Demand (kg DM/ha/day):	52
Farm Cover (kg DM/ha):	898	Target Pre-grazing yield (kg DM/ha):	1400
Farm Cover (kg DM/LU):	293	Days Ahead:	17
Stocking Rate (LU/ha):	3.06	LW/ha (Liveweight/ha):	



Management Comments

- Soil temp averaged 8.6°C for last week (11.2°C for 6/4). Rainfall only 6.2mm. Super grazing conditions.
- On to our second round from today. S R is 3.06Lu/ha, this will go up to approx. 4.3Lu/ha when 30% of area closed for 1st cut silage, will decide on plots for silage next week & top up with N.
- Pre-grazing yield ~ 1500, Silage out of diet, will pull back concentrate further this week. Massive change in covers in past week.
- Sires for spring breeding have been selected & straws delivered for MSD 25/04/15, see table below.

Summary Average of 9 sires selected for Spring breeding

	EBI(E)	EBI Sub Index							PTA's						CI days	SU %
		Milk (E)	Fert (E)	Calv (E)	Beef (E)	Maint (E)	Mmgt (E)	Hlth (E)	M Kg	F Kg	P Kg	F+P Kg	F %	P %		
All Cows in Herd	173	54	93	27	-5	0	1	1	158	9.8	8.8	18.5	0.07	0.07	-5.3	2.3
Predicted 2016 Calves	254	80	134	36	-6	5	3	1	209	14.7	12.6	27.3	0.13	0.11	-7.4	3.6
Bulls Weighted Averages	334	106	176	45	-8	9	6	1	259	19.6	16.4	36.0	0.18	0.15	-9.5	4.8

Milk production and feed details

	Autumn Calving Section	Spring Calving Section
<i>This Week (07/04/15)</i>		
Milk Kg	27.6	31.2
Fat %	3.97	3.98
Protein %	3.64	3.32
Milk Solids kg	2.07	2.28
Concentrate kg Parlour TMR	3.0 0	3 0
Silage kg dry matter per cow	0	0
Grazed grass kg cow	17	17
<i>Lactation to date</i>		
Milk kg	4586	1351
Milk Solids kg	345	103
Concentrate Fed	772 parlour & 356kg tmr	262 parlour & 116kg tmr