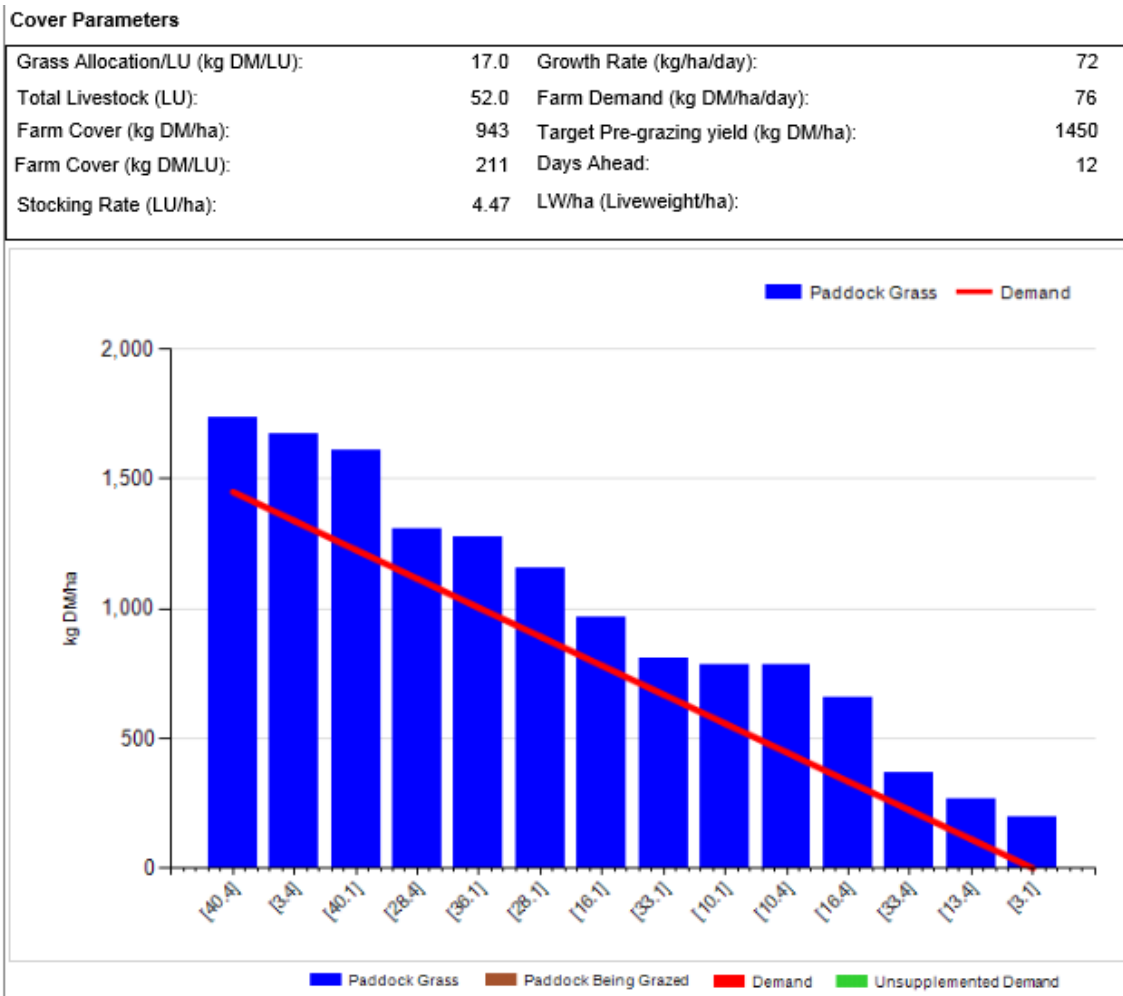


Johnstown Castle Winter Milk Herd- Weekly Management Notes

11/05/15



Management Comments

- Good growth rates last week, although both utilisation & grass quality has dropped. We've skipped one paddock & may have to take out more, I want to graze paddocks 40.1 & 40.4 as these were cut 3 weeks ago & quality is good, even though covers are a little high. We have paddocks which weren't cleaned out well in the wet that would be ideal for taking surplus later.
- Rainfall of 64.6mm and soil temp of 10.8°C for last week, (almost 5 inches for May so far), ground conditions holding up reasonably well, as there was no damage done in previous rounds, rain when grazing these paddocks next round would cause problems.
- Due to the heavy rain last Friday (27mm) we left cows in for that night with ~6kgs/DM bale silage. Will continue with 12 hour allocations & use on-off grazing if required.
- 1st cut main crop silage was planned for this week, but given the forecast it's unlikely at this stage. Crops look to have bulked up well, not massive yield, but the priority for us, with a high proportion of winter milking cows is quality.
- Breeding started here on the 25/04/15. All heifers served, 72% of cows served so far, – slow in the last week, weather probably not helping.

Summary Average of 9 sires selected for Spring breeding

	EBI(E)	EBI Sub Index							PTA's						CI days	SU %
		Milk (E)	Fert (E)	Calv (E)	Beef (E)	Maint (E)	Mmgt (E)	Hlth (E)	M Kg	F Kg	P Kg	F+P Kg	F %	P %		
All Cows in Herd	173	54	93	27	-5	0	1	1	158	9.8	8.8	18.5	0.07	0.07	-5.3	2.3
Predicted 2016 Calves	254	80	134	36	-6	5	3	1	209	14.7	12.6	27.3	0.13	0.11	-7.4	3.6
Bulls Weighted Averages	334	106	176	45	-8	9	6	1	259	19.6	16.4	36.0	0.18	0.15	-9.5	4.8

Milk production and feed details

	Autumn Calving Section	Spring Calving Section
<i>This Week (11/05/15)</i>		
Milk Kg	23.3	29.4
Fat %	4.22	4.12
Protein %	3.85	3.49
Milk Solids kg	1.87	2.22
Parlour concentrate (kgs)	1.0	3.3
Silage kg dry matter per cow	0	0
Grazed grass kg cow	17	17
<i>Lactation to date</i>		
Days in Milk	208	70
Milk kg	5449	2069
Milk Solids kg	414	157
Concentrate Fed	839kg parlor & 356kg tmr	240kg parlor & 105kg tmr

Replacement Weights

Group	Avg D.O.B	Avg EBI	Avg Wgt @ Birth	Avg Wgt @ 6 months	Avg Wgt @ 14 months - Service	Avg Wgt @ 18 months	Avg Wgt @ 24 months - Calving
Aut Born 2013	08-Oct-13	206	38	190	378	472	
Spring Born 2014	25-Feb-14	205	37	180	391		
Autumn Born 2014	03-Oct-14	221	39	174			
Spring born 2015	17-Feb-15		36				