

Johnstown Castle Winter Milk Herd- Weekly Management Notes- 31/08/15

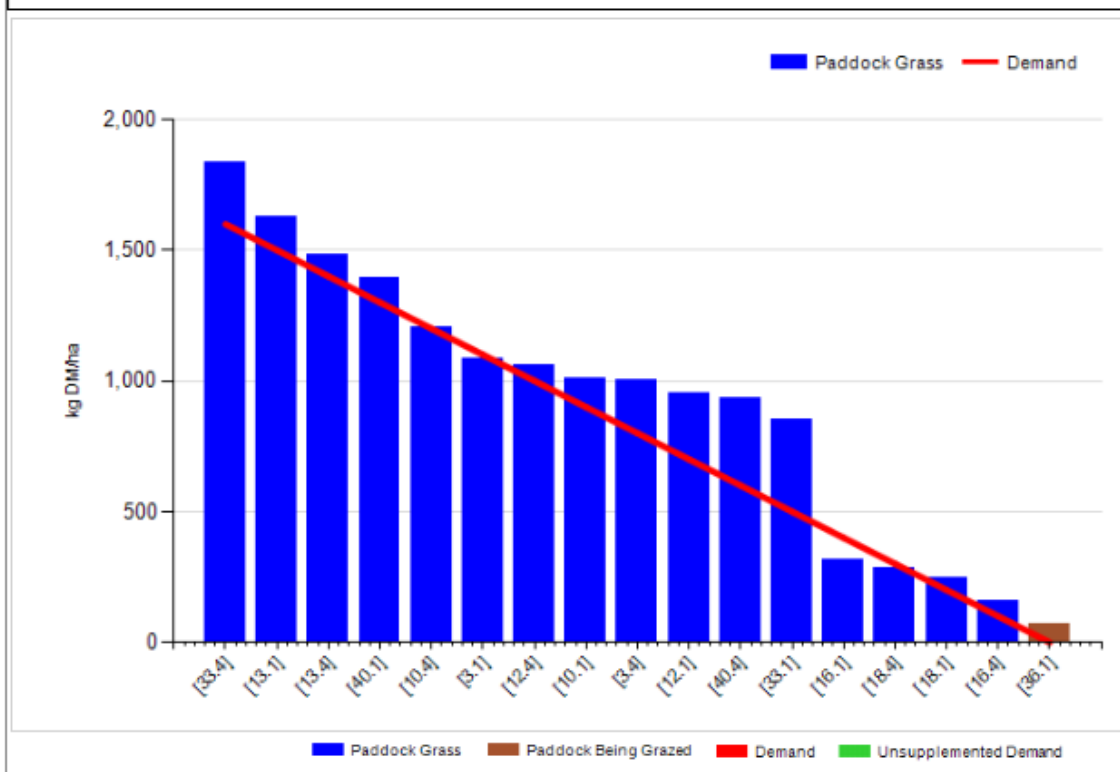
Group: Teagasc Dairy Research Farms	Cover Date: 31/08/2015
Farm: Johnstown Dairy	Treatment: 1

Management Decisions

Rotation Length (days):	27	Silage Fed (kg DM/cow):	0.0
Grass Allocation/Cow (kg DM/cow):	18.0	Residual Height (cm):	4.0
No. of Cows:	28		
Concentrate Fed (kg/cow):	0.0		

Cover Parameters

Grass Allocation/LU (kg DM/LU):	9.7	Predicted Growth Rate:	51
Total Livestock (LU):	52.0	Farm Demand (kg DM/ha/day):	37
Farm Cover (kg DM/ha):	872	Target Pre-grazing yield (kg DM/ha):	1600
Farm Cover (kg DM/LU):	227	Days Ahead:	24
Stocking Rate (LU/ha):	3.84	LW/ha (Liveweight/ha):	1027



Management Comments

- Rainfall of just 7.1 mm and soil temp of 15.1°C for last week. Again we escaped all of the torrential rain which hit many areas in the early parts of last week. Conditions are excellent, with very good growth, despite the significant drop in soil temperatures (17.4 back to 15.1)
- 75% of autumn calving herd have been dried (46% of total herd), Demand is low & growth rates are high, We have approx. 20% of farm closed for surplus, which we plan to take out later this week, hopefully this will be the last of our silage cuts, but growth & pre-grazing covers will dictate this. We're not aiming to build as much grass as 100% spring herd.
- Scan results for our total spring herd last week were disappointing, with an empty rate of approx 18%.
- All replacement stock continue to perform well, Autumn calving heifers starting to spring up nicely, watching closely for dry cow mastitis in heifers & cows.

Milk production and feed details

	Autumn Calving Section	Spring Calving Section
<i>This Week (31/08/15) – cows in milk</i>		
Milk Kg	17.3	21.5
Fat %	3.74	3.62
Protein %	3.62	3.65
Milk Solids kg	1.27	1.56
Parlour concentrate (kgs)	0	0
Silage kg dry matter per cow	0	0
Grazed grass kg cow	18	18
% of Herd Dry	75%	0%
<i>Lactation to date – all cows</i>		
Days in Milk	306	182
Milk kg	7330	4812
Milk Solids kg	563	360
Concentrate Fed	946kg parlor & 356kg tmr	357kg parlor & 105kg tmr

Replacement Weights

Group	Autumn Born 2013 D.O.B: 8/10/13 Avg EBI: 206	Spring Born 2014 D.O.B: 25/02/14 Avg EBI: 205	Autumn Born 2014 D.O.B: 3/10/14 Avg EBI: 221	Spring Born 2015 D.O.B: 17/02/15 Avg EBI: 230
Birth	38	39	39	36
28-May-14	216			
22-Jul-14	284	155		
22-Sep-14	335	226		
11-Dec-14	377 (breeding)			
6-Feb-15		297		
21-Apr-15	468	391 (breeding)	186	
28-Jul-15	562	471	288	158
31-Aug-15	597	518	317	191