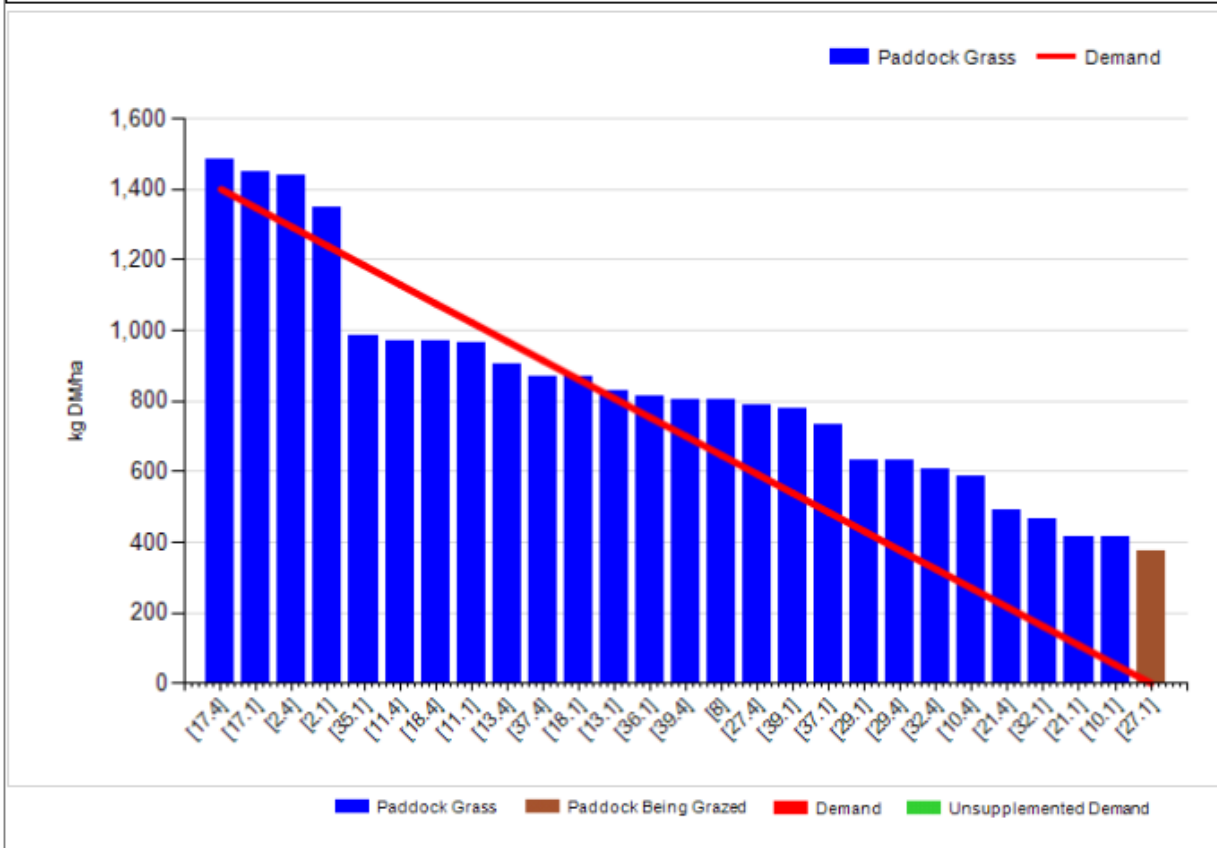


## Johnstown Castle Winter Milk Herd- Weekly Management Notes – 11/04/16

- Rainfall for the past week (24.5mm, soil temp 8.1 °C) wasn't excessive, but conditions have still been very disagreeable for grazing, & ground is pretty much saturated, we're managing to get out for "a day" grazing bout on most days.
- We're moving onto previously grazed paddocks now (2<sup>nd</sup> round), these are inclined to hold rain where they were previously marked, so we badly need drier weather in order to stay grazing, even on-off grazing. Hopefully the tentative forecast of improved weather by the weekend will follow through.
- Still no fertiliser spread for April (we were due to go with ~35kgN/ha on the 4<sup>th</sup> April, but conditions were too wet). Some paddocks are beginning to show a hungry reddish colour again – probably a combination of lower than normal soil temp, wet ground & lack of Nitrogen.
- Both autumn & spring groups are holding well in terms of yield, but this is coming at a cost (feeding 5kgs concentrate/cow/day). Milk protein % are poor, which isn't surprising given the high proportion of average quality (69-70DMD) silage in the diet.

### Cover Parameters

|                                 |      |                                      |      |
|---------------------------------|------|--------------------------------------|------|
| Grass Allocation/LU (kg DM/LU): | 8.0  | Growth Rate:                         | 29   |
| Total Livestock (LU):           | 60.0 | Farm Demand (kg DM/ha/day):          | 23   |
| Farm Cover (kg DM/ha):          | 845  | Target Pre-grazing yield (kg DM/ha): | 1400 |
| Farm Cover (kg DM/LU):          | 290  | Days Ahead:                          | 37   |
| Stocking Rate (LU/ha):          | 2.91 | LW/ha (Liveweight/ha):               |      |



|                   | <b><i>This week (11/04/16)</i></b>      | <b>Autumn Calving Section</b>         | <b>Spring Calving Section</b>                        |
|-------------------|---|---------------------------------------|--|
| <b>Production</b> | % of Herd Milking                       | 100%                                  | 100%   |
|                   | Milk Kg                                 | 23.2                                  | 26.8   |
|                   | Fat %                                   | 4.64                                  | 4.36   |
|                   | Protein %                               | 3.59                                  | 3.15   |
|                   | Milk Solids kg                          | 1.89                                  | 2.01   |
| <b>Intake</b>     | Grazed Grass kgs/dm/cow                 | 8                                     | 8  |
|                   | Silage kgs/dm/cow                       | 7                                     | 7  |
|                   | Maize silage kgs/dm/cow                 |                                       |  |
|                   | Concentrate in TMR – kgs/dm/cow         |                                       |  |
|                   | Parlour concentrate kgs/dm/cow          | 5.0                                   | 5.0  |
| <b>Totals</b>     | <b><i>Lactation to date per cow</i></b> | Mean calving date 6 <sup>th</sup> Oct | Mean calving date – cows calved 16 <sup>th</sup> Feb |
|                   | Days in Milk                            | 188                                   | 57   |
|                   | Milk kg                                 | 4934                                  | 1324   |
|                   | Milk Solids kg                          | 376                                   | 100  |
|                   | Concentrate Fed                         | 329 parlour & 998 kgTMR               | 159kgs   |

The following is the output of Sire Advice program for your herd.

|                                | EBI(E)     | EBI Sub Index |          |          |          |           |          |          | PTA's |      |      |        |      |      | CI days | SU % |
|--------------------------------|------------|---------------|----------|----------|----------|-----------|----------|----------|-------|------|------|--------|------|------|---------|------|
|                                |            | Milk (E)      | Fert (E) | Calv (E) | Beef (E) | Maint (E) | Mmgt (E) | Hith (E) | M Kg  | F Kg | P Kg | F+P Kg | F %  | P %  |         |      |
| <b>All Cows in Herd</b>        | <b>183</b> | 56            | 98       | 29       | -6       | 0         | 2        | 2        | 143   | 10.7 | 8.7  | 19.4   | 0.10 | 0.08 | -5.4    | 2.5  |
| <b>Predicted 2017 Calves</b>   | <b>272</b> | 89            | 145      | 39       | -10      | 5         | 2        | 0        | 180   | 16.6 | 13.2 | 29.8   | 0.18 | 0.14 | -8.1    | 3.8  |
| <b>Bulls Weighted Averages</b> | <b>360</b> | 122           | 193      | 49       | -14      | 11        | 1        | -1       | 218   | 22.5 | 17.8 | 40.3   | 0.26 | 0.20 | -10.7   | 5.0  |

### Replacement Weights

| <b>Group</b> | <b>Spring Born 2014</b><br>D.O.B: 25/02/14<br>Avg EBI: 205 | <b>Autumn Born 2014</b><br>D.O.B: 3/10/14<br>Avg EBI: 221 | <b>Spring Born 2015</b><br>D.O.B: 17/02/15<br>Avg EBI: 230 | <b>Autumn Born 2015</b><br>D.O.B: 01/10/15<br>Avg EBI: | <b>Spring Born 2016</b><br>D.O.B: 09/02/16<br>Avg EBI: |
|--------------|--|---|--|--|--|
| Birth        | 39   | 39  | 36   | 41   | 37   |
| 22-Jul-14    | 155  |   |  |  |  |
| 22-Sep-14    | 226  |   |  |  |  |
| 11-Dec-14    |  |   |  |  |  |
| 6-Feb-15     | 297  |   |  |  |  |
| 21-Apr-15    | 391 (breeding)   | 186   |  |  |  |
| 28-Jul-15    | 471  | 288   | 158  |  |  |
| 31-Aug-15    | 518  | 317   | 191  |  |  |
| 30-Sep-15    | 549  | 351   | 220  |  |  |
| 11-Dec-15    | 589  | 381   | 267  | 93   |  |
| 20-Jan-16    | 615  | 403   | 294  | 136  |  |
| 30-Mar-16    |  | 441   | 330  | 183  |  |
|              |  |   |  |  |  |
|              |  |   |  |  |  |