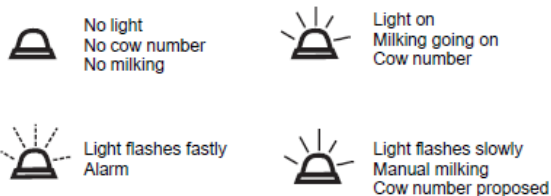
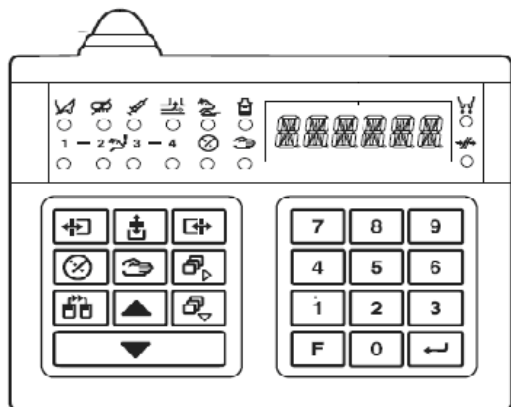
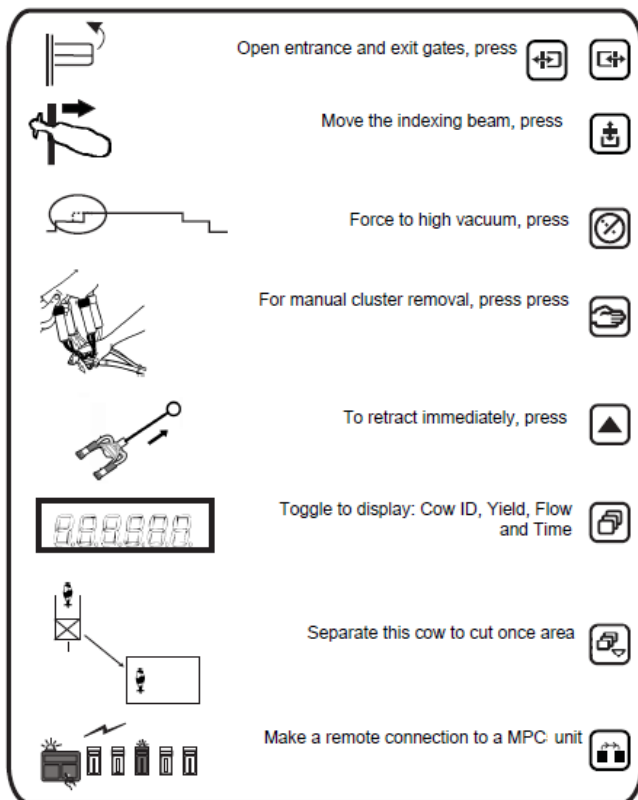


DeLaval MPC 680



Button functions



Start milking session

Press **F 1** and **↑** →

The display at all places will show the actual milking session number

Normal milking

Press **↓** to release the cluster



Prepare the cow for milking

(Automatic cluster removal will take place)

Press **F 5** and **↑** to confirm milk yield (full row)

After milking

Press **☞** to release the cluster for cleaning

Press **F 8** and **↑** to release cluster (full row)

End milking session

Press **F 2** and **↑** →

Attentions!

