

# Johnstown Castle Winter Milk Herd- Weekly Management Notes

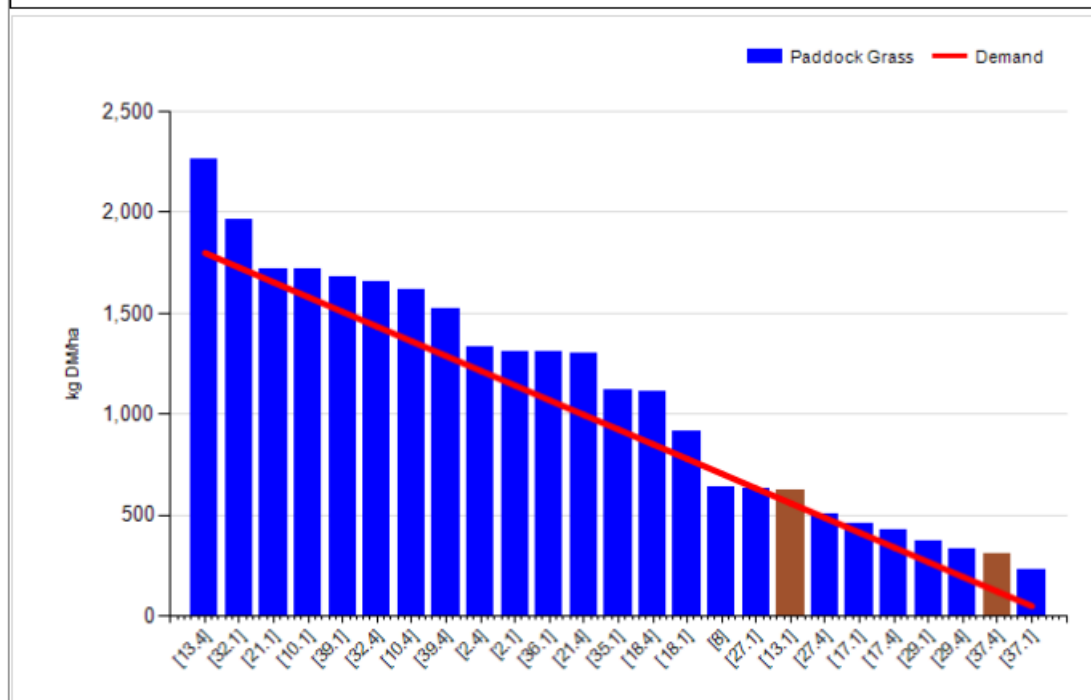
10/10/16

- Rainfall for the past 7 days was only 5.3mm, with a soil temp of 13.3°C. All of the rain fell on Friday evening, in general we've had very good conditions for the past 10 days or so. Grazing conditions are good, but any wet weather at this time of year will make the ground sticky. We've taken the opportunity of the dry spell to graze out the newly re-seeded paddocks (sown 16<sup>th</sup> August), pre-grazing cover ~ 1000kgs, if we were to get any wet weather, this ground would be too soft to graze.
- Calving is going well with approx. 60% of the autumn herd calved to date. Unfortunately the remaining 40% will stretch out until the end of November. All cows are still calving outdoors on the calving paddock. One minor incidence of milk fever to date and very little calving assistance.
- Paddocks grazed over the past week are now closed for the winter, we hope to get out any remaining bits of dirty water/slurry on these paddocks later this week. We are on target to have 70% grazed by end of October. We have a couple of paddocks with a pre-grazing yield in excess of 2,000kgs, which would be our cut off point for the autumn herd, but with the dry conditions we've been able to take a grazing off these with the milking herd & put the dry cows in to clean out the paddock for the following day.

Rotation Length (days):	35	Silage Fed (kg DM/cow):	0.0
Grass Allocation/Cow (kg DM/cow):	14.0	Residual Height (cm):	4.2
No. of Cows:	36		
Concentrate Fed (kg/cow):	3.0		

### Cover Parameters

Grass Allocation/LU (kg DM/LU):	13.2	Growth Rate:	59
Total Livestock (LU):	60.0	Farm Demand (kg DM/ha/day):	41
Farm Cover (kg DM/ha):	1098	Target Pre-grazing yield (kg DM/ha):	1800
Farm Cover (kg DM/LU):	354	Days Ahead:	27
Stocking Rate (LU/ha):	3.10	LW/ha (Liveweight/ha):	745



	<i>This week (10/10/16)</i>	<b>Autumn Calving Herd</b>	<b>Spring Calving Herd</b>
<b>Production</b>	% of Herd Milking	60%	100%
	Milk Kg	24.3	15.4
	Fat %	4.52	4.21
	Protein %	3.39	3.97
	Milk Solids kg	1.94	1.26
<b>Intake</b>	Grazed Grass kgs/dm/cow (estimate)	12	17
	Silage kgs/dm/cow	0	0
	Maize silage kgs/dm/cow	0	0
	Concentrate in TMR – kgs/dm/cow	0	
	Parlour concentrate kgs/dm/cow	3	2
<b>Totals</b>	<b><i>Lactation to date per cow</i></b>	Expected Mean calving date 8 <sup>th</sup> Oct	Mean calving date 17 <sup>th</sup> Feb
	Days in Milk	18	238
	Milk kg	446	5269
	Milk Solids kg	36	397
	Concentrate Fed	66	392kgs