

Weekly update Clonakilty Dairy – 15 September 2014

Tetraploid swards (2.75 cows/ha)



Date Produced: 16-09-2014

PastureBase-Ireland

Grass Measurement Report

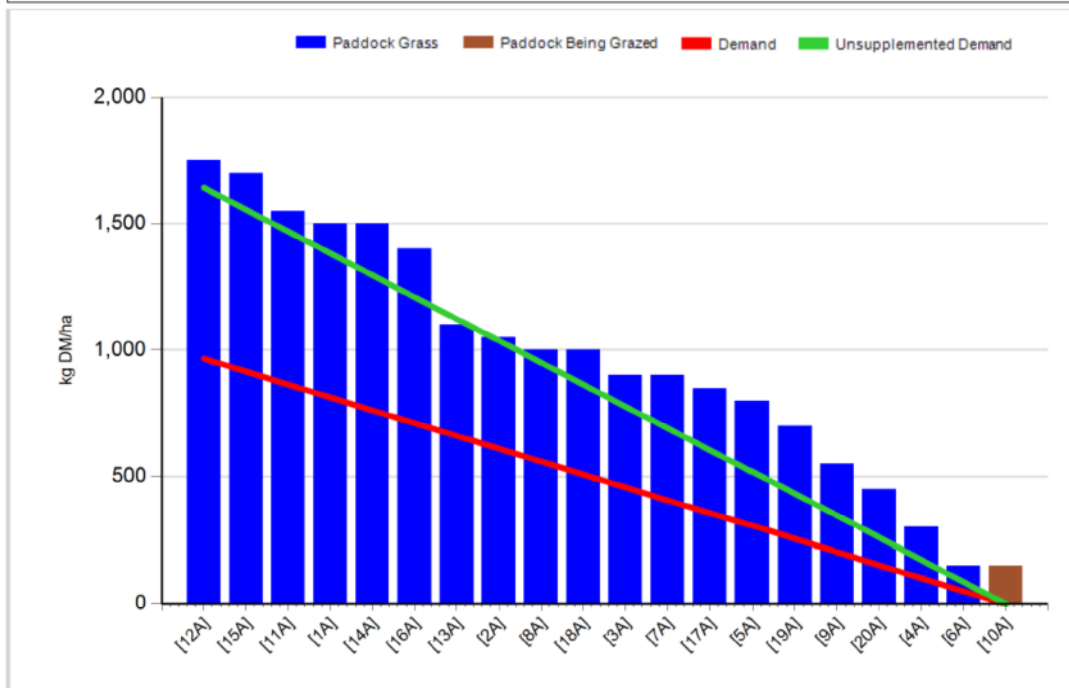
Group:	Cover Date: 15/09/2014
Farm: Clonakilty Farm	Treatment: T

Management Decisions

Rotation Length (days):	35	Silage Fed (kg DM/cow):	7.0
Grass Allocation/Cow (kg DM/cow):	10.0	Residual Height (cm):	4.0
No. of Cows:	30		
Concentrate Fed (kg/cow):	0.0		

Cover Parameters

Grass Allocation/LU (kg DM/LU):	10.0	Growth Rate (kg/ha/day):	50
Total Livestock (LU):	30.0	Farm Demand (kg DM/ha/day):	28
Farm Cover (kg DM/ha):	961	Target Pre-grazing yield (kg DM/ha):	966
Farm Cover (kg DM/LU):	348	Days Ahead:	34
Stocking Rate (LU/ha):	2.76	LW/ha (Liveweight/ha):	



1. Average farm cover (AFC) is 961 kg DM/ha (348 kg DM/LU)
2. Growth rate last week was 50 kg DM/ha per day
3. Stocking rate is 2.76 LU/ha and demand is 28 kg DM/ha per day
4. Grass growth increased last week from 42 kg DM/ha per day the previous week to 50 kg DM/ha per day this week. This in combination with feeding silage (7 kg DM/ cow per day; a demand of 28 kg DM/ha per day) has allowed AFC to increase to 961 kg DM/ha, which is right on target (See

budget below). However, growth rates are still not high enough for us to stop supplementing, as we would have a demand of 47 kg DM/ha per day if we stopped feeding silage. We need to keep feeding silage to build AFC. We may reduce the amount of silage depending on grass growth; we will monitor the situation closely.

- Pre-grazing yield is 1700 and we are allocating 10 kg DM of grass per cow. Cows are being allocated 7 kg DM of silage, which they eat after morning and evening milking. No concentrate is being fed. Minerals are being given to the cows through the dosatron into the water.

Diploid swards (2.75 cows/ha)



Date Produced: 16-09-2014

PastureBase-Ireland

Grass Measurement Report

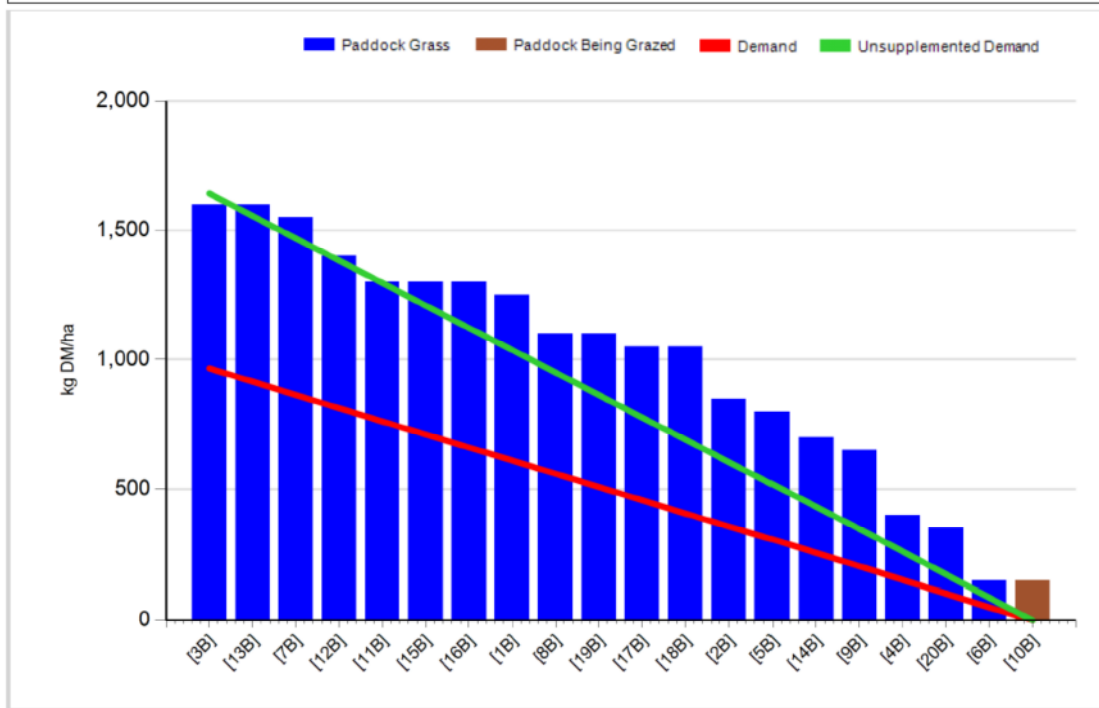
Group:	Cover Date: 15/09/2014
Farm: Clonakilty Farm	Treatment: D

Management Decisions

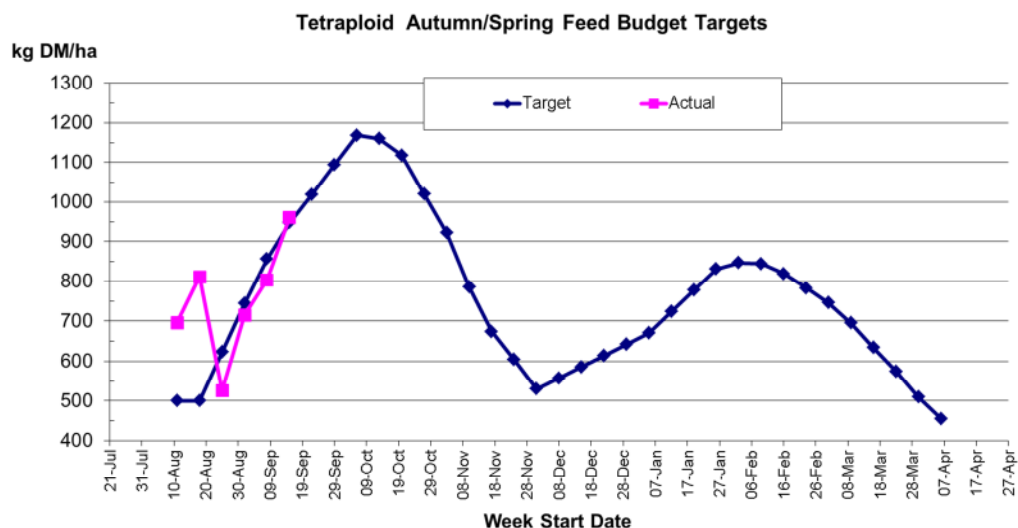
Rotation Length (days):	35	Silage Fed (kg DM/cow):	7.0
Grass Allocation/Cow (kg DM/cow):	10.0	Residual Height (cm):	4.0
No. of Cows:	30		
Concentrate Fed (kg/cow):	0.0		

Cover Parameters

Grass Allocation/LU (kg DM/LU):	10.0	Growth Rate (kg/ha/day):	36
Total Livestock (LU):	30.0	Farm Demand (kg DM/ha/day):	28
Farm Cover (kg DM/ha):	976	Target Pre-grazing yield (kg DM/ha):	966
Farm Cover (kg DM/LU):	354		
Stocking Rate (LU/ha):	2.76		



1. Average farm cover 976 kg DM/ha (354 kg DM/LU)
2. Growth rate last week was 36 kg DM/ha per day
3. Stocking rate is 2.76 LU/ha and demand is 28 kg DM/ha per day
6. Grass growth decreased last week from 49 kg DM/ha per day the previous week to 36 kg DM/ha per day this week. However AFC still increased (to 976 kg DM/ha, which is on target) due to the fact that we were feeding silage (7 kg DM/ cow per day; a demand of 28 kg DM/ha per day). However, growth rates are still not high enough for us to stop supplementing, as we would have a demand of 47 kg DM/ha per day if we stopped feeding silage. We need to keep feeding silage to build AFC. We may reduce the amount of silage depending on grass growth; we will monitor the situation closely.
4. Pre-grazing yield is 1600 and we are allocating 10 kg DM of grass per cow. Cows are being allocated 7 kg DM of silage after morning milking. No concentrate is being fed. Minerals are being given to the cows through the dosatron into the water.



Whole farm update

1. Cows are currently milking 16.5 kg/day at 5.00% fat, 4.13% protein and 4.71% lactose. Milk solids per cow are 1.49 kg/day. Latest results from the processor 4.87% fat, 4.03 % protein, 4.79% lactose, 119 SCC and TBC is 4. Average bodyweight of milking cows is 524 kg and average body condition score is 2.88.
2. Average farm cover on the general area is 892 kg DM/ha (360 kg DM/LU). Demand is 37 kg DM/ha per day and growth rate on the general area last week was 56 kg DM/ha per day. Stocking rate is 2.48 LU/ha. General cows are receiving 3 kg concentrate/day to lower demand to increase AFC.
3. Breeding started on the 20th of April with the stock bulls being removed on Monday, the 14th of July, after a 12 week breeding season. 47 out of the 49 heifers are in-calf.
4. Overall empty rate for the herd is 10.5% this year.