

Curtins Farm Walk Notes 13-10-16

Farm Details:

Area available 48 ha

Farm Cover 1147 kg/DM/Ha (388kg DM /cow)

Growth for last 7 days has averaged 56 kg/DM/ha per day.

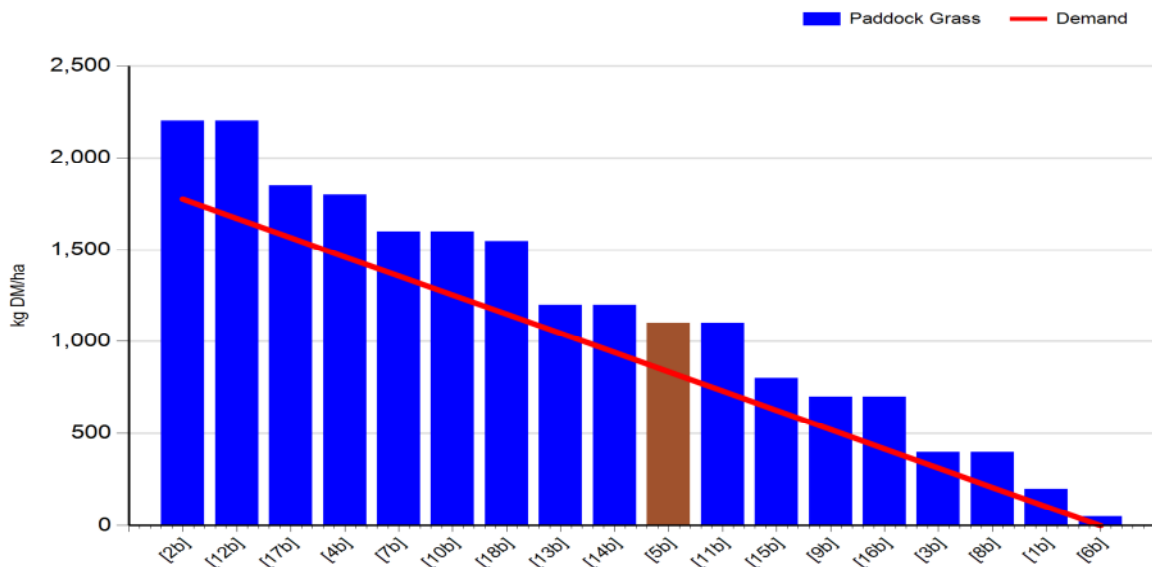
Demand is 44 kg DM / ha/day

Rotation 40 days

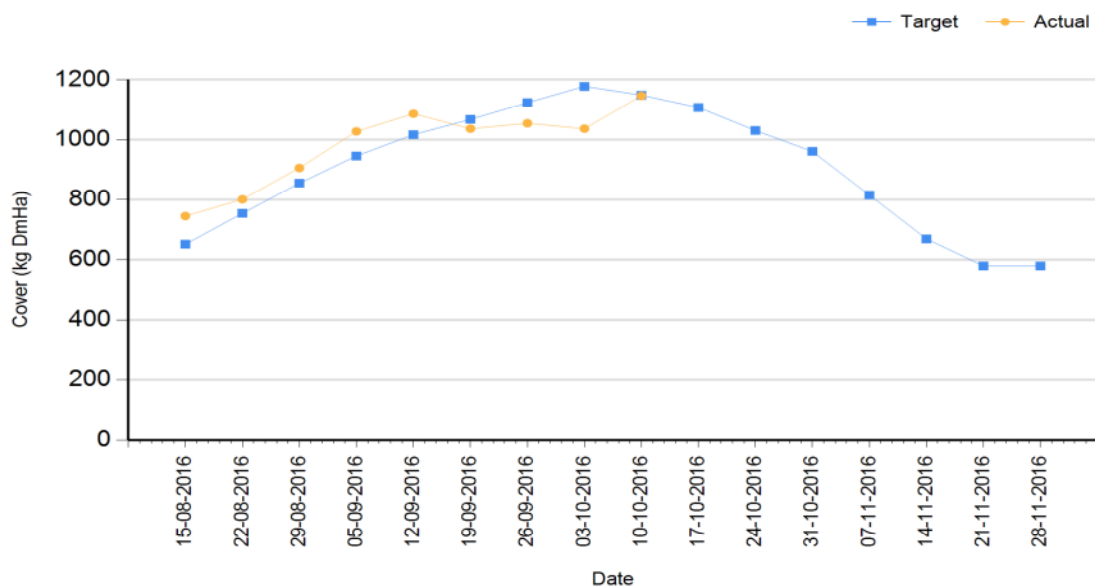
Supplement 2 kgs /cow/day.

Grass Supply

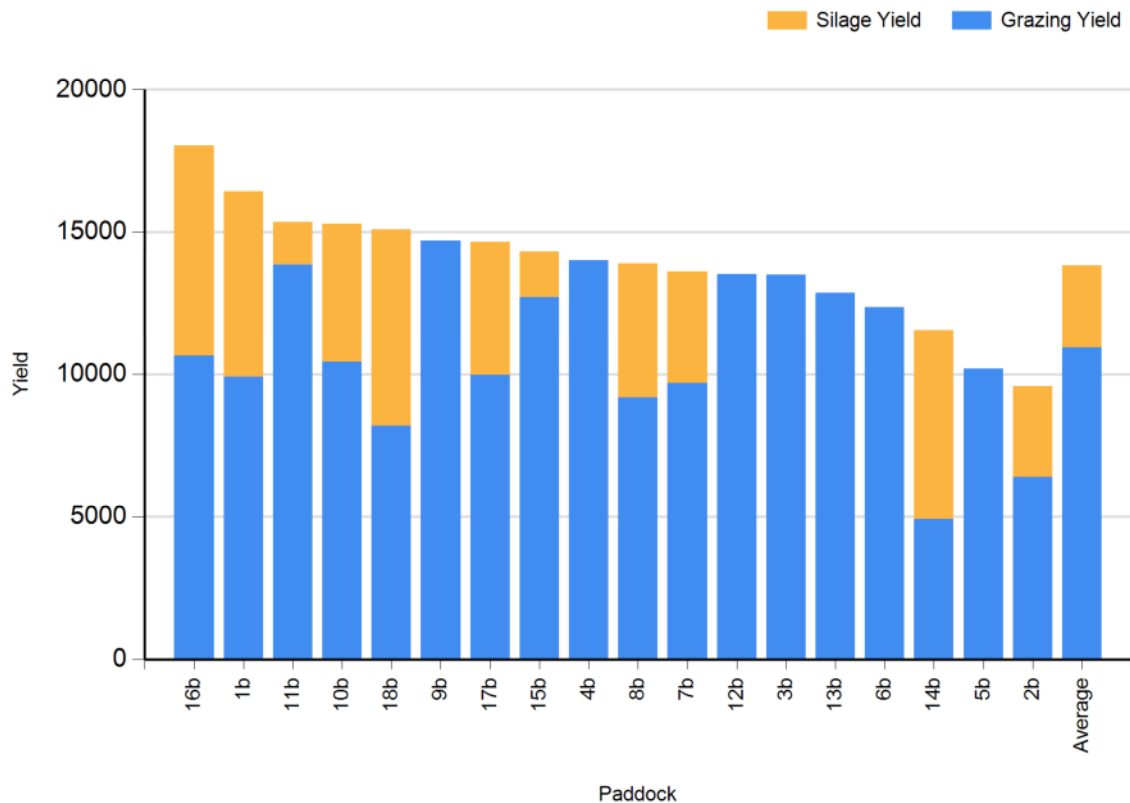
Growth has improved over the last week so AFC is on target for the Autumn. This will allow us produce as much milk as possible off grass into the later stages of the season. The stocking rate is at 2.96 cows/ha. The heaviest covers are 2200 kg DM / ha.



Autumn Budget



Cumulative Paddock Yield to 10/10/2016



Grazing conditions

Ground conditions have been excellent over the past few weeks. This has allowed us to clean out paddocks to target residuals of <4.0cm. We are using a 36 hr strip wire to achieve our target residuals. There is 16% of the farm closed to date.

Supplements

Cows are being fed 2kg of a high energy (0.94 UFL), low protein (14%) concentrate.

Fertiliser

The farm was blanket spread with 15 units / acre of CAN with sulphur on the 9th of September. The last of slurry will be spread this week.

Milk Production

Average production 14 litres per cow, 5.53% fat, 4.35% protein, (1.42kg MS), SCC 122,000.

Breeding

Breeding started on the 27th of April and lasted for a total of 11 weeks. 21 day submission rate was 96%. We did 6 weeks AI and five weeks with stock bulls. Scanning results were good with – 10.7% empty and 74% 6 week in-calf rate.

Priorities

- Grazing management to achieve target post height residuals.
- Closing paddocks for next spring.
- Identify low BCS cows for earlier dry off.
- Finish slurry.

