

# Curtins Farm Walk Notes 31-10-16

**Farm Details:**

**Area available 48 ha**

**Farm Cover 813 kg/DM/Ha (360kg DM /cow)**

**Growth for last 7 days has averaged 25 kg/DM/ha per day.**

**Demand is 27 kg DM / ha/day**

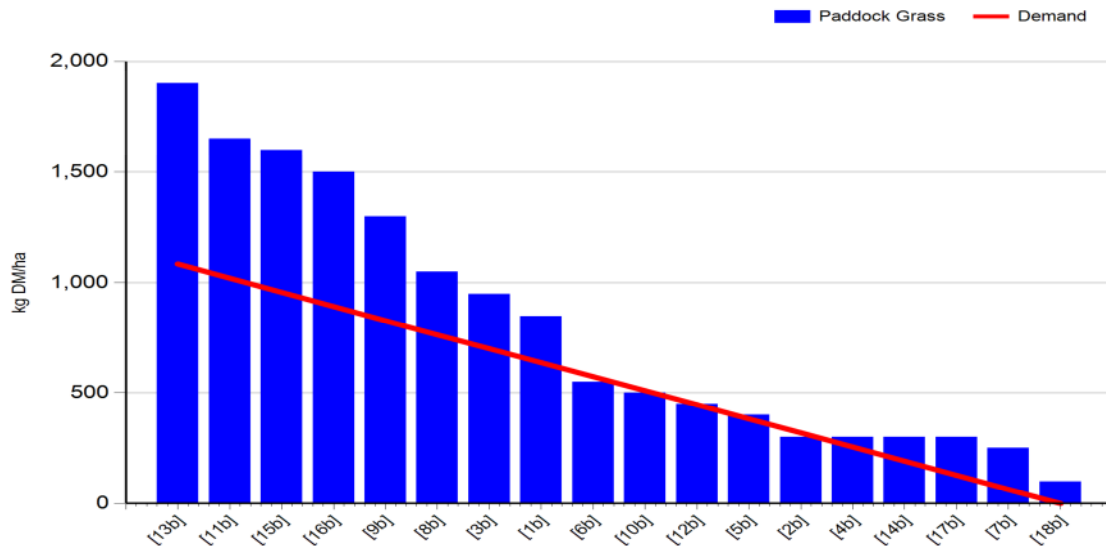
**Rotation 41 days**

**Supplement: Concentrate 2 kgs /cow/day.**

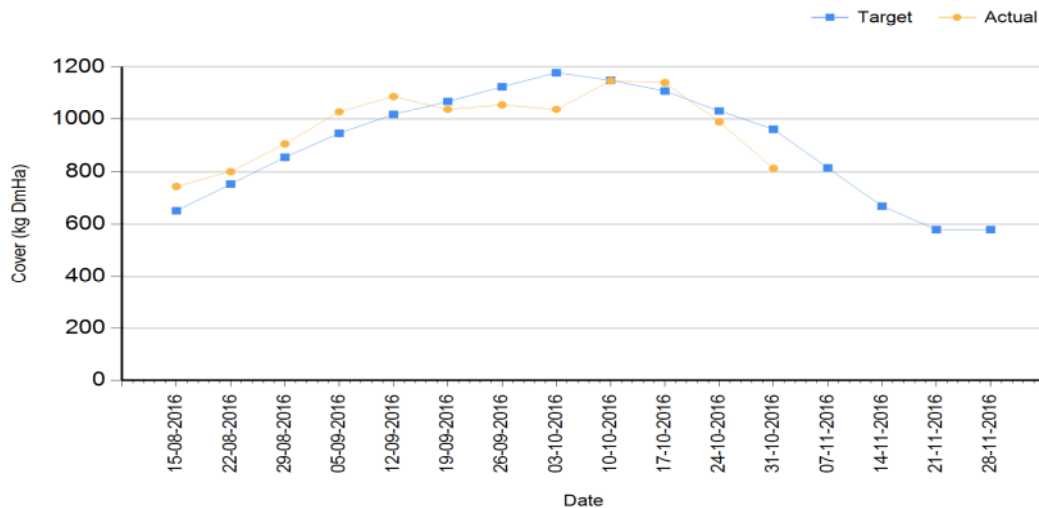
**Silage 3 kgs DM /cow/ day**

**Grass Supply**

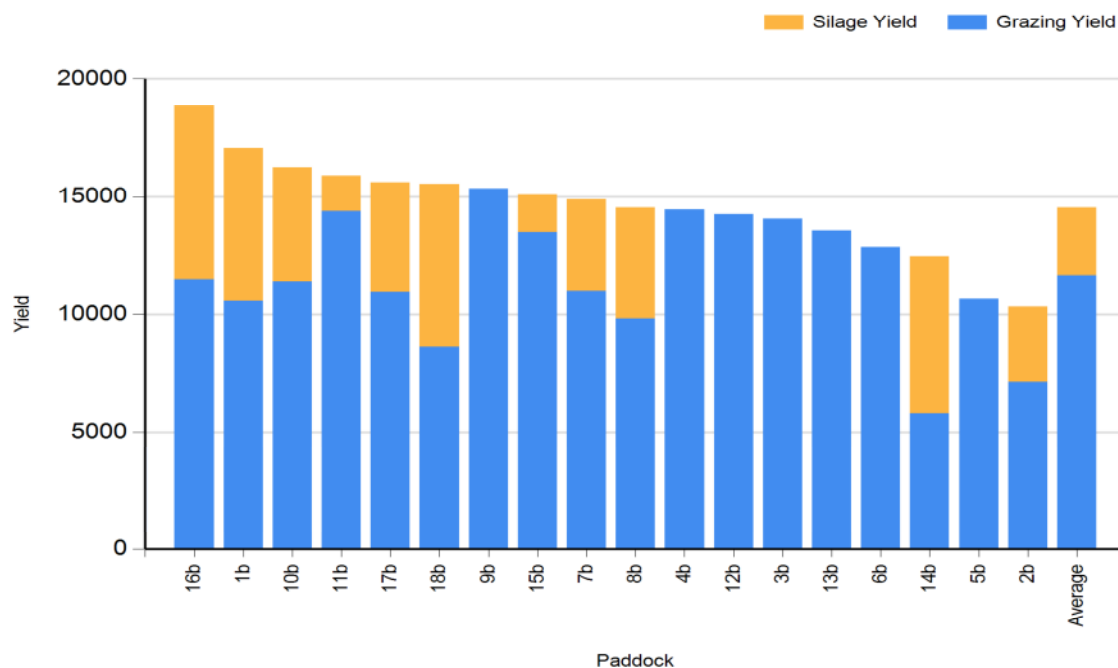
Growth rate was 25 kg DM/ha per day last week and demand was set at 27 kg DM/ha. Growth is well back. Average farm cover (AFC) has dropped below target. We are currently grazing covers of 1700kg DM/ha. Target Pre-grazing yield is 1085 kg DM/ha and we are allocating 12 kg DM of grass, 3 kg DM silage and 2 kg of concentrate. We have reduced demand by introducing silage into the diet and by also drying off 1st lactation animals and cows with low BCS.



**Autumn Budget**



### Cumulative Paddock Yield to 11/1/2016



#### Grazing conditions

Ground conditions are excellent and post grazing residuals are on target (< 4.0 cm). We are still using a 36 hr strip wire to achieve our target residuals. There is 64% of the farm closed to date.

#### Supplements

Cows are being fed 2kg of a high energy (0.94 UFL), low protein (14%) concentrate and 3 kg DM of bale silage.

#### Fertiliser

The last of slurry was spread 14<sup>th</sup> of October.

#### Milk Production

Average production 14 litres per cow, 5.29% fat, 4.48% protein, (1.40kg MS), SCC 117,000.

#### Breeding

Breeding started on the 27<sup>th</sup> of April and lasted for a total of 11 weeks. 21 day submission rate was 96%. We did 6 weeks AI and five weeks with stock bulls. Scanning results were good with – 10.7% empty and 74% 6 week in-calf rate.

#### Replacement stock

Replacement heifers will return in the next week. On their return they will be housed full time to reduce the demand for grass on the farm.

#### Priorities

- Grass utilisation.
- Closing paddocks for next spring.
- Final preparations for winter housing

