

Johnstown Castle Winter Milk Herd- Weekly Management Notes

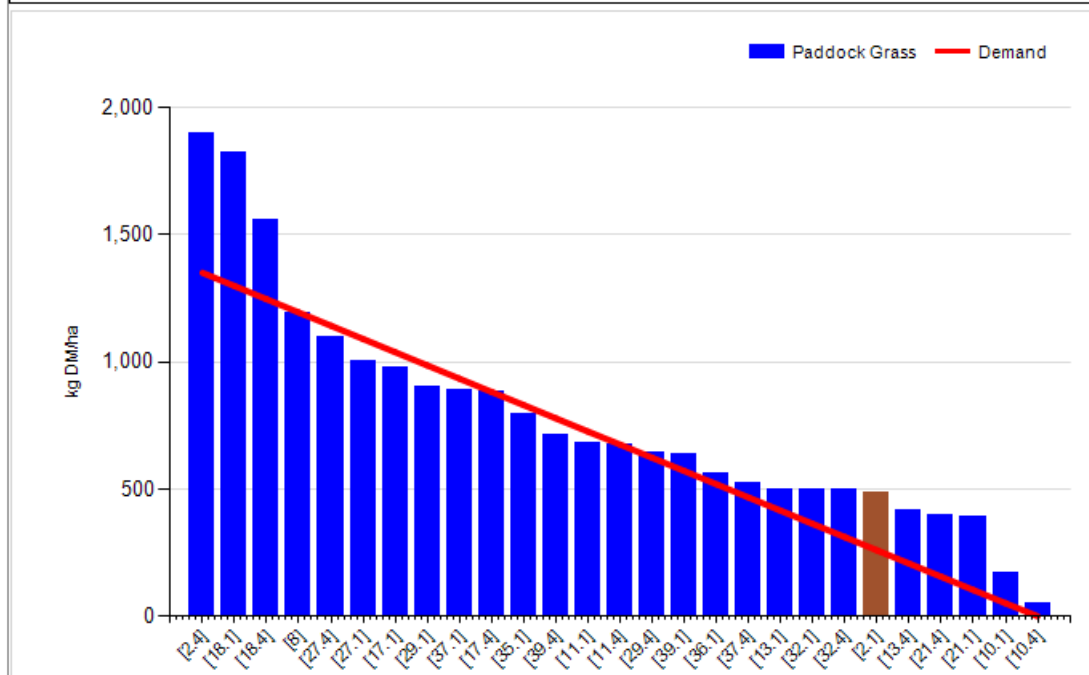
07/11/16

- Excellent grazing conditions for the past fortnight, with no rainfall over that period, soil temp has continually dropped & is back to an average of 9.5°C average for the past week.
- Obviously, growth has dropped well back, but the good conditions allowed us to keep grazing fulltime in order to keep getting through the last round on the autumn herd. We have 83% of the farm closed & would like to graze fulltime for another 5/6 days in order to get below 10% of the farm before introducing silage/housing by night. At this stage the autumn cows would probably benefit from moving onto their winter diet, but we need to get a couple of more paddocks grazed off first.
- Calving is going very well, no problems with very little assistance required, 88% of the herd have calved, the remaining 12% will drag out over the next 5 weeks, we'll be housing these, this week, as the weather is due to change & the strong grass in the calving paddock will be finished.
- The first of the spring herd were dried off last Friday – mainly low yielders, empty cows will be sold this week, leaving just 65% of the spring herd milking, these have 92% of area grazed & are in at night on good quality baled silage

Rotation Length (days):	35	Silage Fed (kg DM/cow):	0.0
Grass Allocation/Cow (kg DM/cow):	14.0	Residual Height (cm):	4.0
No. of Cows:	50		
Concentrate Fed (kg/cow):	4.0		

Cover Parameters

Grass Allocation/LU (kg DM/LU):	13.7	Growth Rate:	24
Total Livestock (LU):	60.0	Farm Demand (kg DM/ha/day):	40
Farm Cover (kg DM/ha):	806	Target Pre-grazing yield (kg DM/ha):	1350
Farm Cover (kg DM/LU):	277	Days Ahead:	20
Stocking Rate (LU/ha):	2.91	LW/ha (Liveweight/ha):	291



	<i>This week (07/11/16)</i>	Autumn Calving Herd	Spring Calving Herd
Production	% of Herd Milking	88%	65%
	Milk Kg	24.3	14.2
	Fat %	4.42	5.04
	Protein %	3.49	3.96
	Milk Solids kg	1.94	1.27
Intake	Grazed Grass kgs/dm/cow (estimate)	14	6
	Silage kgs/dm/cow	0	8
	Maize silage kgs/dm/cow	0	0
	Concentrate in TMR – kgs/dm/cow	0	0
	Parlour concentrate kgs/dm/cow	4.5	3
Totals	<i>Lactation to date per cow</i>	Expected Mean calving date 8 th Oct	Mean calving date 17 th Feb
	Days in Milk	38	272
	Milk kg	873	5700
	Milk Solids kg	72.4	434
	Concentrate Fed	136	468kgs