

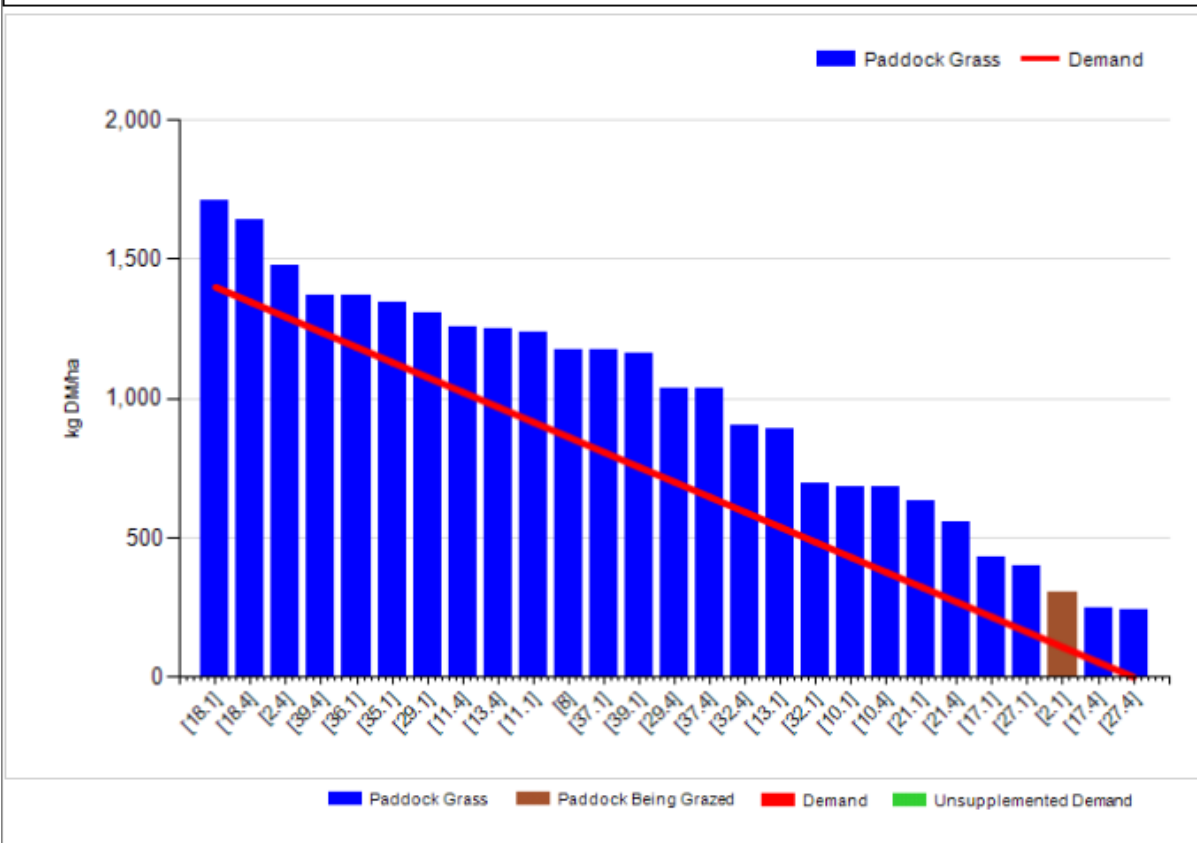
## Johnstown Castle Winter Milk Herd- Weekly Management Notes – 18/04/16

- What a difference a week of dry weather makes! We had rainfall for the past week of 8.2mm and a rise in soil temperatures to 9.1 °C. Really good drying conditions, and although the nights are cold, grass is really starting to move with the lift in soil temperatures.
- We've moved to 24 hour allocations in the past couple of days as ground conditions have improved, were back out grazing fulltime for the past 5/6 days with silage out of the diet & concentrate stepping back to 2kgs/cow.
- All paddocks have been spread with 32 kgs N/ha. We have provisionally closed off our silage ground & will top up the silage ground when we're sure these won't be needed for grazing. See the before & after pasture graphs. A stocking rate of 4.7kgs/LU with silage ground closed, which is a bit high, we'd prefer to be closer to 4.2, which would give us more scope to take out surplus paddocks, so we might end up grazing a couple of the paddock closed for silage or alternatively taking an "early silage cut" of a few in order to have a lower stocking rate in early June.

### Silage Ground included

#### Cover Parameters

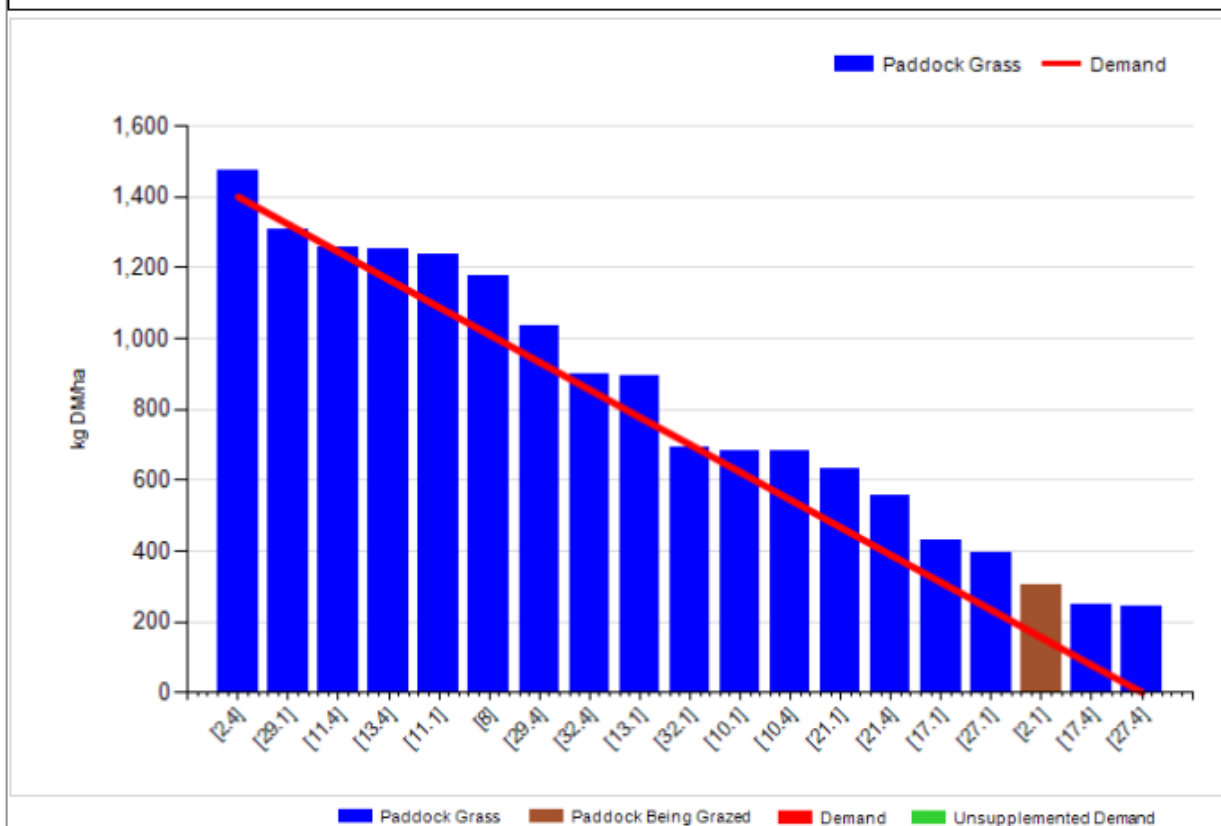
Grass Allocation/LU (kg DM/LU):	18.0	Growth Rate:	40
Total Livestock (LU):	66.0	Farm Demand (kg DM/ha/day):	58
Farm Cover (kg DM/ha):	993	Target Pre-grazing yield (kg DM/ha):	1400
Farm Cover (kg DM/LU):	310	Days Ahead:	17
Stocking Rate (LU/ha):	3.20	LW/ha (Liveweight/ha):	



## Silage Ground closed

### Cover Parameters

Grass Allocation/LU (kg DM/LU):	18.0	Growth Rate:	28
Total Livestock (LU):	66.0	Farm Demand (kg DM/ha/day):	85
Farm Cover (kg DM/ha):	813	Target Pre-grazing yield (kg DM/ha):	1400
Farm Cover (kg DM/LU):	173	Days Ahead:	10
Stocking Rate (LU/ha):	4.71	LW/ha (Liveweight/ha):	0



	<i><b>This week (18/04/16)</b></i>	<b>Autumn Calving Herd</b>	<b>Spring Calving Herd</b>
<b>Production</b>	% of Herd Milking	100%	100%
	Milk Kg	24.4	27.4
	Fat %	4.57	4.27
	Protein %	3.54	3.15
	Milk Solids kg	1.95	2.03
<b>Intake</b>	Grazed Grass kgs/dm/cow	18	18
	Silage kgs/dm/cow	0	0
	Maize silage kgs/dm/cow		0
	Concentrate in TMR – kgs/dm/cow		
	Parlour concentrate kgs/dm/cow	2.0	2.0
<b>Totals</b>	<i><b>Lactation to date per cow</b></i>	Mean calving date 6 <sup>th</sup> Oct	Mean calving date – cows calved 17 <sup>th</sup> Feb
	Days in Milk	195	63
	Milk kg	5052	1539
	Milk Solids kg	381	113
	Concentrate Fed	623 parlour & 740 kgTMR	190kgs

### Replacement Weights

<b>Group</b>	<b>Spring Born 2014</b> D.O.B: 25/02/14 Avg EBI: 205	<b>Autumn Born 2014</b> D.O.B: 3/10/14 Avg EBI: 221	<b>Spring Born 2015</b> D.O.B: 17/02/15 Avg EBI: 230	<b>Autumn Born 2015</b> D.O.B: 01/10/15 Avg EBI:	<b>Spring Born 2016</b> D.O.B: 09/02/16 Avg EBI:
Birth	39	39	36	41	37
22-Jul-14	155				
22-Sep-14	226				
11-Dec-14					
6-Feb-15	297				
21-Apr-15	391 (breeding)	186			
28-Jul-15	471	288	158		
31-Aug-15	518	317	191		
30-Sep-15	549	351	220		
11-Dec-15	589	381	267	93	
20-Jan-16	615	403	294	136	
30-Mar-16		441	330	183	