

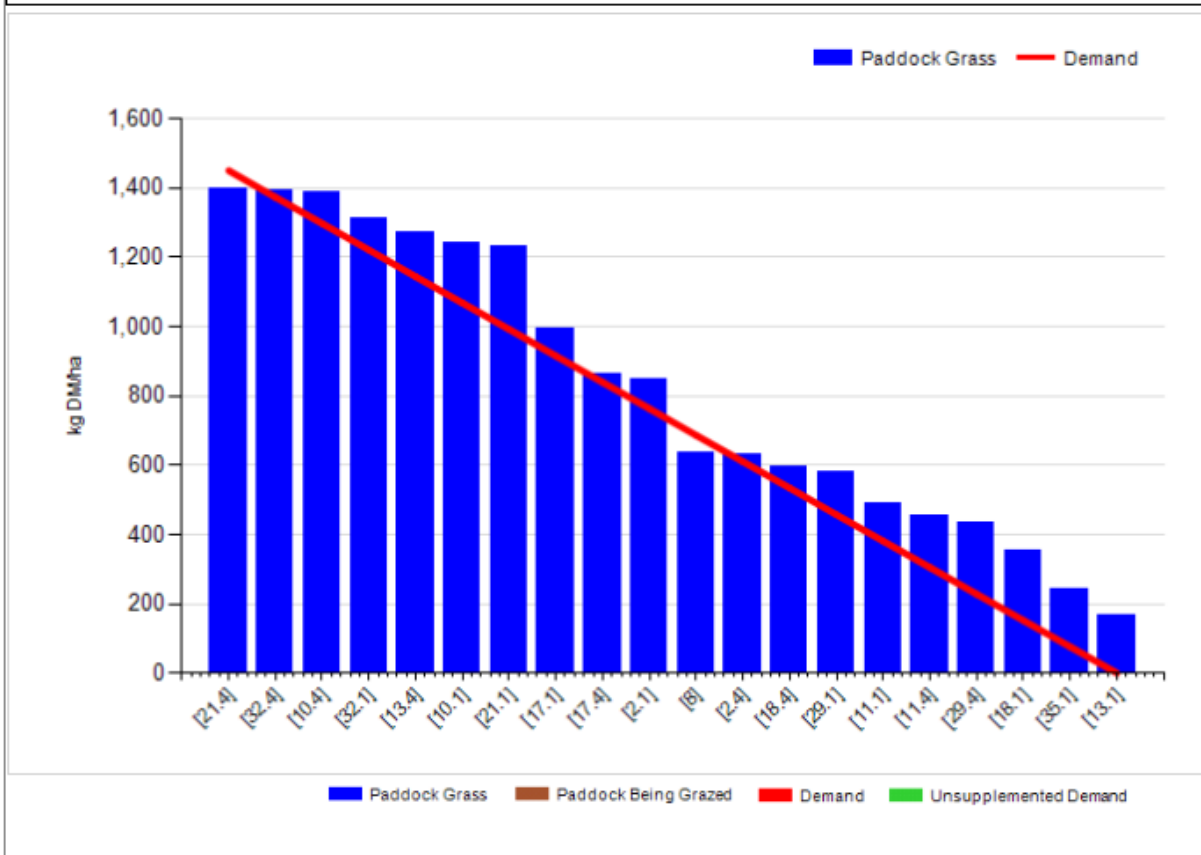
Johnstown Castle Winter Milk Herd- Weekly Management Notes

02/05/16

- Growth has started to pick up but is still poor for the time of year, rainfall for the past week was below average with 9.6mm, soil temperatures recorded at 9.3 °C. With the improved forecast for the coming week & reasonable covers we're reducing concentrate on the autumn calvers with the plan to be off concentrate by next week hopefully. We'll reduce concentrate on the spring herd to ~ 1.5kgs & probably hold them at that level for the 1st six weeks of breeding.
- We plan to spread 30kgs/N/ha on all grazing ground this week
- The first week of the breeding season has been slow, with only 32% of cows & 40% of heifers submitted. Heifers were injected with prostaglandin today & will be bred to observed heat on Thursday/Friday.
- We've provisionally closed some more silage ground on both herds, we'll have a better idea how that's going later in the week (this ground will have been grazed twice).

Cover Parameters

Grass Allocation/LU (kg DM/LU):	18.0	Growth Rate:	52
Total Livestock (LU):	66.0	Farm Demand (kg DM/ha/day):	77
Farm Cover (kg DM/ha):	812	Target Pre-grazing yield (kg DM/ha):	1450
Farm Cover (kg DM/LU):	191	Days Ahead:	11
Stocking Rate (LU/ha):	4.26	LW/ha (Liveweight/ha):	



	<i>This week (02/05/16)</i>	Autumn Calving Herd	Spring Calving Herd
Production	% of Herd Milking	100%	100%
	Milk Kg	25.6	29.4
	Fat %	4.14	4.15
	Protein %	3.70	3.38
	Milk Solids kg	1.99	2.21
Intake	Grazed Grass kgs/dm/cow	18	18
	Silage kgs/dm/cow	0	0
	Maize silage kgs/dm/cow		0
	Concentrate in TMR – kgs/dm/cow		
	Parlour concentrate kgs/dm/cow	2.0	2.0
Totals	<i>Lactation to date per cow</i>	Mean calving date 6 th Oct	Mean calving date 17 th Feb
	Days in Milk	209	77
	Milk kg	5434	1918
	Milk Solids kg	412	142
	Concentrate Fed	678 parlour & 740 kgTMR	231kgs