

Johnstown Castle Winter Milk Herd- Weekly Management Notes

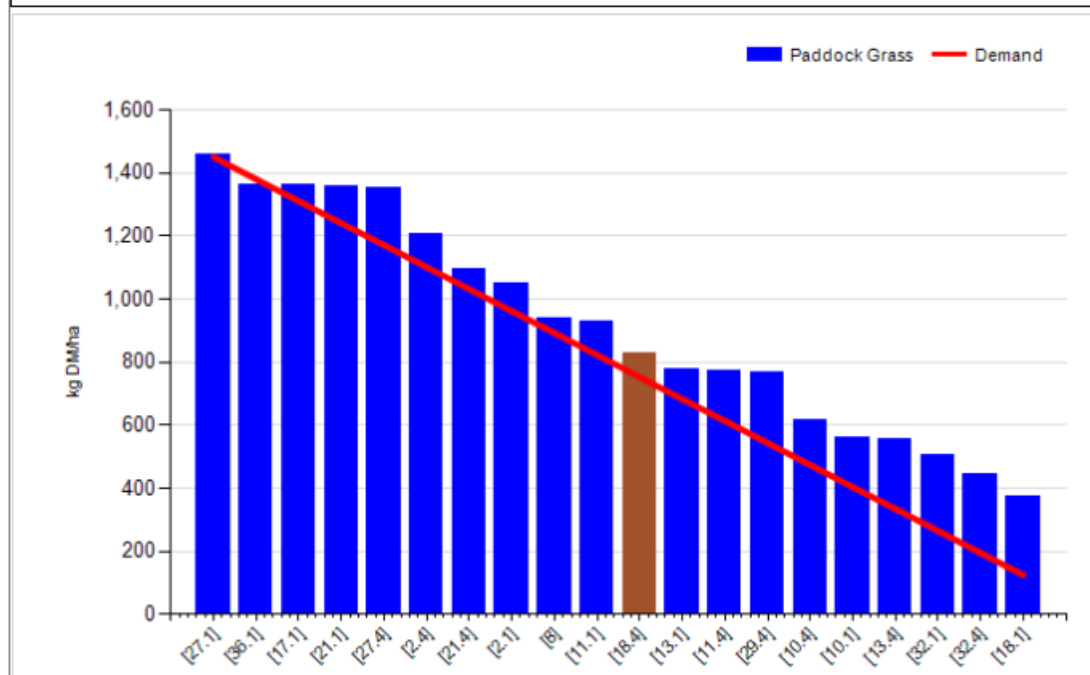
20/06/16

- The broken weather over the past week hasn't caused us any problems & has been helpful in terms of growth, we were lucky to have missed the extreme localised downpours, whilst still getting a total of 27.2mm rain for the past week, soil temperatures dropped back to 16.8°C average.
- In general grass quality has improved, we'd be happy that most paddocks are back to 'thicker leafier swards' with nice pre-grazing covers of ~1400kgs.
- With the improved grass quality, milk yield & solids have held on the autumn herd & increased slightly on the previous week in the spring herd (probably 30% of paddocks grazed over the past week was after-grass from surpluses). All cows are effectively off concentrate.
- The paddocks which we skipped last week, will be taken out this week as soon as conditions allow, these were quite poor in terms of bulk last week, with a poor 'butt'. Following the rain they've improved considerably over the past 5 days, silage quality will not be as good as normal surplus bales but should still be very good.

| | | | |
|-----------------------------------|------|-------------------------|-----|
| Rotation Length (days): | 20 | Silage Fed (kg DM/cow): | 0.0 |
| Grass Allocation/Cow (kg DM/cow): | 18.0 | Residual Height (cm): | 4.5 |
| No. of Cows: | 65 | | |
| Concentrate Fed (kg/cow): | 0.3 | | |

Cover Parameters

| | | | |
|---------------------------------|------|--------------------------------------|------|
| Grass Allocation/LU (kg DM/LU): | 18.0 | Growth Rate: | 69 |
| Total Livestock (LU): | 65.0 | Farm Demand (kg DM/ha/day): | 75 |
| Farm Cover (kg DM/ha): | 916 | Target Pre-grazing yield (kg DM/ha): | 1450 |
| Farm Cover (kg DM/LU): | 219 | Days Ahead: | 12 |
| Stocking Rate (LU/ha): | 4.19 | LW/ha (Liveweight/ha): | |



| | <i>This week (20/06/16)</i> | Autumn Calving Herd | Spring Calving Herd |
|-------------------|---|---------------------------------------|--|
| Production | % of Herd Milking | 100% | 100% |
| | Milk Kg | 19.5 | 24.8 |
| | Fat % | 4.22 | 3.98 |
| | Protein % | 3.83 | 3.59 |
| | Milk Solids kg | 1.57 | 1.87 |
| Intake | Grazed Grass kgs/dm/cow | 18 | 18 |
| | Silage kgs/dm/cow | 0 | 0 |
| | Maize silage kgs/dm/cow | | 0 |
| | Concentrate in TMR – kgs/dm/cow | | |
| | Parlour concentrate kgs/dm/cow | 0.3 | 0.3 |
| Totals | <i>Lactation to date per cow</i> | Mean calving date 6 th Oct | Mean calving date 17 th Feb |
| | Days in Milk | 258 | 126 |
| | Milk kg | 6470 | 3250 |
| | Milk Solids kg | 496 | 238 |
| | Concentrate Fed | 716 parlour & 740 kgTMR | 293kgs |

Replacement Weights

| Group | Spring Born 2014 D.O.B: 25/02/14 Avg EBI: 205 | Autumn Born 2014 D.O.B: 3/10/14 Avg EBI: 221 | Spring Born 2015 D.O.B: 17/02/15 Avg EBI: 230 | Autumn Born 2015 D.O.B: 01/10/15 Avg EBI: 232 | Spring Born 2016 D.O.B: 09/02/16 Avg EBI: 253 |
|-----------|--|---|--|--|--|
| Birth | 39 | 39 | 36 | 41 | 37 |
| 22-Jul-14 | 155 | | | | |
| 22-Sep-14 | 226 | | | | |
| 11-Dec-14 | | | | | |
| 6-Feb-15 | 297 | | | | |
| 21-Apr-15 | 391 (breeding) | 186 | | | |
| 28-Jul-15 | 471 | 288 | 158 | | |
| 31-Aug-15 | 518 | 317 | 191 | | |
| 30-Sep-15 | 549 | 351 | 220 | | |
| 11-Dec-15 | 589 | 381 | 267 | 93 | |
| 20-Jan-16 | 615 | 403 | 294 | 136 | |
| 30-Mar-16 | | 441 | 330 | 183 | |
| 25-Apr-16 | | 445 | 351 (breeding) | 203 | |
| 10-Jun-16 | | 503 | 404 | 258 | 129 |