

Johnstown Castle Winter Milk Herd- Weekly Management Notes

29/08/16

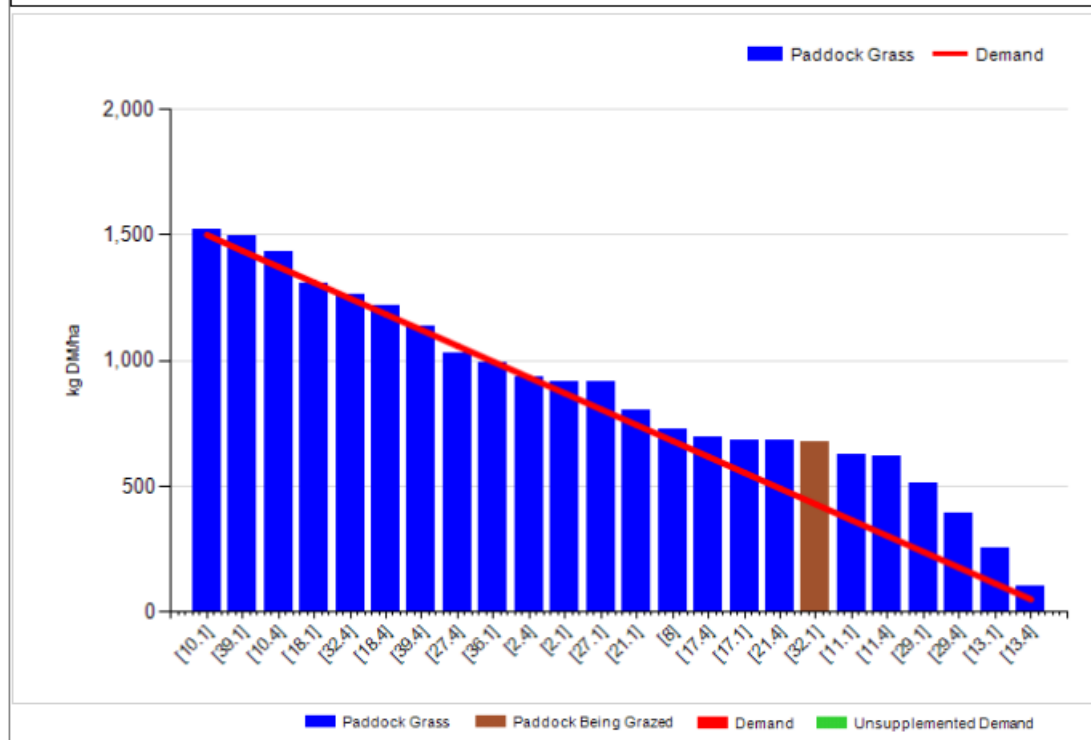
- We got approx. 40mm of rain over the period 18-23rd August, which helped to address the soil moisture deficit we've been running into, this has given a boost to grass growth over the past week. Grazing conditions are excellent. Rainfall for the past 7 days was 12.8mm with a soil temp of 16.9°C.
- Two paddocks which we had planned for surplus silage, were cut last week with approx. 2400kgs (we had held off on these to make sure we got rain for grass growth). Another paddock on the autumn herd has been reseeded. If the growth of the past week continues, it's likely we'll end up taking out at least another 10-15% of the area for surplus, due to the low demand. Ideally we'd like to have all surpluses taken this week, but it will depend on growth.
- The entire Autumn herd has now been dried, we should get 2-3 weeks fully dry before cows from the autumn herd start to calve down again (due date – 22nd Sept)

Management Decisions

Rotation Length (days):	26	Silage Fed (kg DM/cow):	0.0
Grass Allocation/Cow (kg DM/cow):	18.0	Residual Height (cm):	4.2
No. of Cows:	0		
Concentrate Fed (kg/cow):	0.0		

Cover Parameters

Grass Allocation/LU (kg DM/LU):	12.0	Growth Rate:	58
Total Livestock (LU):	65.0	Farm Demand (kg DM/ha/day):	43
Farm Cover (kg DM/ha):	891	Target Pre-grazing yield (kg DM/ha):	1500
Farm Cover (kg DM/LU):	252	Days Ahead:	21
Stocking Rate (LU/ha):	3.54	LW/ha (Liveweight/ha):	2125



	<i>This week (29/08/16)</i>	Autumn Calving Herd	Spring Calving Herd
Production	% of Herd Milking	0%	100%
	Milk Kg		20.1
	Fat %		4.05
	Protein %		3.66
	Milk Solids kg		1.55
Intake	Grazed Grass kgs/dm/cow	14 ?	18
	Silage kgs/dm/cow	0	0
	Maize silage kgs/dm/cow		0
	Concentrate in TMR – kgs/dm/cow		
	Parlour concentrate kgs/dm/cow	0	0
Totals	<i>Lactation to date per cow</i>	Mean calving date 6 th Oct	Mean calving date 17 th Feb
	Days in Milk	307	196
	Milk kg	7261	4679
	Milk Solids kg	563	347
	Concentrate Fed	736 parlour & 740 kgTMR	332kgs

Replacement Weights

Group	Autumn 2013 D.O.B: 8/10/13 Avg EBI: 206	Spring 2014 D.O.B: 25/02/14 Avg EBI: 205	Autumn 2014 D.O.B: 3/10/14 Avg EBI: 221	Spring 2015 D.O.B: 17/02/15 Avg EBI: 230	Autumn 2015 D.O.B: 01/10/15 Avg EBI: 232	Spring 2016 D.O.B: 09/02/16 Avg EBI: 253
Birth	38	39	39	36	41	37
28-May-14	216					
22-Jul-14	284	155				
22-Sep-14	335	226				
11-Dec-14	377 (breeding)					
6-Feb-15		297				
21-Apr-15	468	391 (breeding)	186			
28-Jul-15	562	471	288	158		
31-Aug-15	597	518	317	191		
30-Sep-15		549	351	220		
11-Dec-15		589	381 (breeding)	267	93	
20-Jan-16		615	403	294	136	
30-Mar-16			441	330	183	
25-Apr-16			445	351 (breeding)	203	
10-Jun-16			503	404	258	129
12-Jul-16			527	417	279	166
24-Aug-16			579	471	309	208