

Totals 2008 (%)

County	Total	Private	Public	Total land area of county	% of County Planted
Carlow	5,928.51	2,119.59	3,808.92	89,635	6.61
Cavan	16,399.03	8,948.98	7,450.05	189,060	8.67
Clare	50,509.09	27,149.54	23,359.55	318,784	15.84
Cork	86,804.91	37,959.69	48,845.22	745,988	11.64
Donegal	58,701.99	22,295.36	36,406.63	483,058	12.15
Dublin	3,652.52	1,870.32	1,782.20	92,156	3.96
Galway	56,933.09	18,006.97	38,926.12	593,966	9.59
Kerry	54,113.26	35,028.72	19,084.54	470,142	11.51
Kildare	8,999.04	4,991.67	4,007.37	169,425	5.31
Kilkenny	19,555.29	9,453.27	10,102.02	206,167	9.49
Laois	24,785.93	8,823.07	15,962.86	171,954	14.41
Leitrim	24,797.00	12,197.73	12,599.27	152,476	16.26
Limerick	26,206.45	14,527.24	11,679.21	268,580	9.76
Longford	8,326.51	5,155.62	3,170.89	104,387	7.98
Louth	3,292.86	1,863.42	1,429.44	82,334	4.00
Mayo	56,732.41	22,270.89	34,461.52	539,846	10.51
Meath	6,846.18	5,342.28	1,503.90	233,587	2.93
Monaghan	6,158.34	3,002.23	3,156.11	129,093	4.77
Offaly	19,884.28	10,644.28	9,240.00	199,774	9.95
Roscommon	20,623.76	12,215.04	8,408.72	246,276	8.37
Sligo	21,632.68	9,004.59	12,628.09	179,608	12.04
Tipperary	49,466.93	21,072.67	28,394.26	425,458	11.63
Waterford	28,474.93	9,781.49	18,693.44	183,786	15.49
Westmeath	12,939.57	8,228.77	4,710.80	176,290	7.34
Wexford	15,273.23	6,637.69	8,635.54	235,143	6.50
Wicklow	43,456.72	14,137.20	29,319.52	202,483	21.46
Total	730,494.51	332,728.32	397,766.19	6,889,456	10.60

Totals 2008

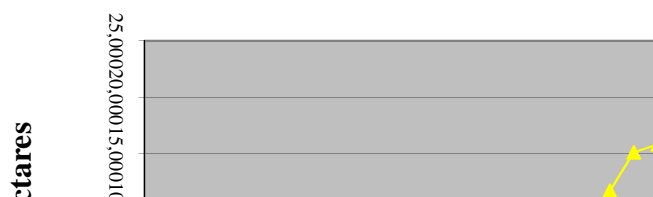
YEAR	TOTAL (HA)	PRIVATE (HA)	PUBLIC (HA)
1980	393,307	100,499	292,808
1981	399,681	100,774	298,907
1982	406,195	101,272	304,923
1983	412,220	101,599	310,621
1984	417,885	102,072	315,813
1985	423,127	102,689	320,438
1986	430,095	104,969	325,126
1987	438,444	107,923	330,521
1988	450,151	112,519	337,632
1989	465,277	121,016	344,261
1990	481,094	130,163	350,931
1991	500,241	141,455	358,786
1992	516,940	150,589	366,351
1993	532,938	159,760	373,178
1994	552,397	172,597	379,800
1995	576,107	189,940	386,167
1996	597,088	206,495	390,593
1997	608,522	217,078	391,444
1998	621,450	227,080	394,370
1999	634,118	238,857	395,261
2000	649,813	253,088	396,725
2001	665,277	268,235	397,042
2002	680,331	282,970	397,361
2003	689,428	291,939	397,489
2004	699,166	301,556	397,610
2005	709,262	311,588	397,674
2006	717,299	319,600	397,699
2007	724,246	326,547	397,699
2008	730,494	332,728	397,766

Afforestation 1920-2008

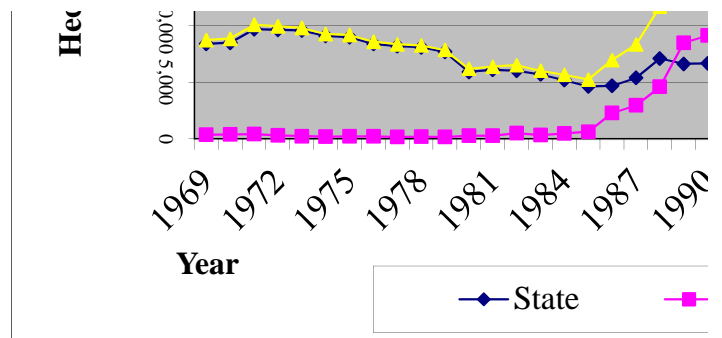
	State	Private	Total
1920	0	0	0
1921	0	0	0
1922	0	0	0
1923	200	0	200
1924	300	0	300
1925	1,200	0	1,200
1926	1,100	0	1,100
1927	1,300	0	1,300
1928	1,300	0	1,300
1929	1,150	0	1,150
1930	1,250	100	1,350
1931	1,270	100	1,370
1932	1,250	100	1,350
1933	1,700	100	1,800
1934	2,250	0	2,250
1935	2,800	150	2,950
1936	3,000	100	3,100
1937	3,000	150	3,150
1938	3,050	100	3,150
1939	2,725	100	2,825
1940	2,400	250	2,650
1941	1,800	100	1,900
1942	1,700	150	1,850
1943	1,600	140	1,740
1944	1,700	130	1,830
1945	1,500	120	1,620
1946	1,570	110	1,680
1947	2,335	100	2,435
1948	3,100	110	3,210
1949	3,000	120	3,120
1950	3,800	100	3,900
1951	6,050	120	6,170
1952	5,000	160	5,160
1953	5,000	160	5,160
1954	5,600	200	5,800
1955	6,050	50	6,100
1956	7,050	250	7,300
1957	8,050	200	8,250
1958	9,050	230	9,280
1959	10,050	650	10,700
1960	10,600	550	11,150
1961	10,050	600	10,650
1962	9,900	630	10,530
1963	10,100	560	10,660
1964	9,900	570	10,470
1965	9,000	580	9,580
1966	7,500	350	7,850
1967	8,700	400	9,100
1968	8,550	350	8,900

	State	Private	Total
1969	8,400	350	8,750
1970	8,500	370	8,870
1971	9,700	410	10,110
1972	9,650	300	9,950
1973	9,600	220	9,820
1974	9,100	180	9,280
1975	9,000	200	9,200
1976	8,400	200	8,600
1977	8,200	160	8,360
1978	8,100	170	8,270
1979	7,700	160	7,860
1980	5,922	268	6,190
1981	6,099	275	6,374
1982	6,016	498	6,514
1983	5,698	327	6,025
1984	5,192	473	5,665
1985	4,625	617	5,242
1986	4,688	2,280	6,968
1987	5,395	2,954	8,349
1988	7,111	4,596	11,707
1989	6,629	8,497	15,126
1990	6,670	9,147	15,817
1991	7,855	11,292	19,147
1992	7,565	9,134	16,699
1993	6,827	9,171	15,998
1994	6,622	12,837	19,459
1995	6,367	17,343	23,710
1996	4,426	16,555	20,981
1997	851	10,583	11,434
1998	2,926	10,002	12,928
1999	891	11,777	12,668
2000	1,464	14,231	15,695
2001	317	15,147	15,464
2002	319	14,735	15,054
2003	128	8,969	9,097
2004	122	9,617	9,739
2005	64	10,032	10,096
2006	25	8,012	8,037
2007	0	6,947	6,947
2008	67	6,182	6,249

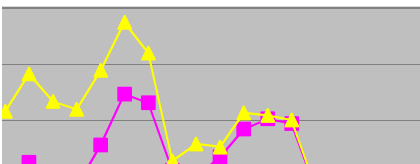
Total Forest Area



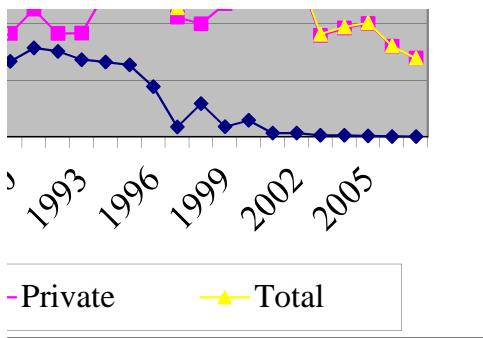
Afforestation 1920-2008



2007



Afforestation 1920-2008



Private Planting 1982-2008

County	1982	1983	1984	1985	1986	1987	1988	1989	1990	1991	1992	1993	1994	1995	1996	1997
Carlow	0.00	0.00	0.00	0.00	0.00	0.00	4.00	49.25	36.20	53.30	58.00	92.90	82.60	87.06	69.05	39.54
Cavan	2.37	0.93	86.52	101.80	92.98	155.27	145.80	67.60	158.41	205.80	125.50	172.70	131.38	330.85	178.15	225.72
Clare	44.92	46.96	71.89	95.50	331.60	515.97	372.00	714.40	983.91	857.88	558.07	1000.60	1088.30	1439.60	1455.21	668.05
Cork	24.83	26.90	19.42	75.23	77.32	287.19	434.30	548.40	766.06	1038.00	448.23	801.49	973.24	1422.80	1117.33	761.23
Donegal	2.40	1.40	16.35	3.64	12.58	27.90	152.50	243.10	505.14	943.25	806.80	844.80	1310.40	2544.30	1889.33	1232.81
Dublin	0.00	0.00	0.00	0.00	0.00	0.00	0.00	58.90	0.00	66.88	29.48	46.03	52.45	189.58	114.38	79.82
Galway	16.42	0.00	7.58	16.50	380.40	358.81	530.40	787.50	965.98	751.20	826.00	510.90	519.09	739.99	806.79	464.68
Kerry	0.66	10.50	27.66	71.47	361.00	403.79	524.40	713.10	1428.80	1820.60	1052.80	884.45	1444.70	1857.30	1905.13	1312.58
Kildare	0.00	0.00	0.00	0.00	0.00	0.00	2.40	58.00	76.40	122.00	77.00	157.10	70.43	323.16	210.16	237.01
Kilkenny	0.00	0.00	0.00	0.00	0.00	0.00	24.21	287.80	143.00	382.45	463.45	373.40	440.03	454.49	434.58	408.11
Laois	0.00	0.00	0.00	0.00	0.00	0.00	6.28	233.80	177.68	275.80	281.10	321.80	529.87	447.63	646.28	368.59
Leitrim	2.40	27.09	14.24	35.45	411.20	263.61	469.20	499.60	160.63	417.70	539.76	521.96	206.53	430.74	722.87	587.13
Limerick	0.00	0.00	0.00	0.00	73.92	153.57	91.16	314.10	268.26	339.70	248.05	166.40	392.65	550.79	462.05	534.58
Longford	23.47	17.79	9.17	6.14	8.50	79.77	22.18	43.64	28.80	124.70	137.65	104.30	177.67	136.94	222.05	201.29
Louth	0.00	0.00	0.00	0.00	0.00	0.00	6.70	12.10	2.70	6.20	31.05	18.65	0.00	11.17	18.92	13.50
Mayo	0.50	2.12	12.45	26.08	55.41	248.28	1124.00	1533.00	1259.40	875.03	537.60	549.50	1306.30	967.42	1022.78	795.07
Meath	0.00	0.00	0.00	0.00	0.00	0.00	2.68	20.71	13.43	17.70	53.30	88.75	337.71	288.11	247.29	180.86
Monaghan	0.00	2.25	0.96	13.39	5.48	27.21	15.20	24.95	8.50	70.90	43.50	31.70	26.38	60.25	94.36	42.30
Offaly	0.00	0.00	0.00	0.00	0.00	0.00	50.60	92.23	199.86	406.40	188.90	372.00	533.81	685.37	676.76	116.53
Roscommon	19.02	1.75	3.10	126.70	371.90	273.37	239.60	502.70	493.95	498.60	720.20	246.40	592.78	494.66	736.67	449.24
Sligo	50.51	22.60	14.48	45.41	97.92	159.14	339.00	590.00	279.81	366.80	337.20	207.35	333.34	542.73	892.44	378.40
Tipperary	0.00	0.00	0.00	0.00	0.00	0.00	1.05	740.40	528.94	828.70	401.50	535.70	893.57	1123.00	1031.54	562.14
Waterford	0.00	0.00	0.00	0.00	0.00	0.00	7.60	147.90	234.62	397.60	338.40	287.45	301.50	422.43	385.68	176.36
Westmeath	0.00	0.00	0.00	0.00	0.00	0.00	0.00	34.94	54.10	132.05	199.60	292.70	279.77	973.61	356.36	407.78
Wexford	0.00	0.00	0.00	0.00	0.00	0.00	6.47	6.70	34.51	52.10	144.90	175.66	248.30	282.47	286.76	137.36
Wicklow	0.00	0.00	0.00	0.00	0.00	0.00	24.40	173.00	338.15	240.80	486.40	366.10	564.00	536.71	572.69	202.21
Total	187.50	160.29	283.82	617.31	2280.21	2953.88	4596.13	8497.82	9147.24	11292.14	9134.44	9170.79	12836.80	17343.16	16555.61	10582.89

Private Planting 1982-2008

© Government of Ireland 2007

Private Planting 1982-2008

County	1998	1999	2000	2001	2002	2003	2004	2005	2006	2007	2008
Carlow	52.81	64.29	56.97	71.17	80.67	79.33	53.56	87.88	60.44	42.54	49.38
Cavan	228.08	225.13	352.94	554.60	699.57	220.47	435.6	302.53	217.13	299.86	197.23
Clare	676.71	878.15	1377.07	1457.39	1009.20	587.74	799.8	735.85	697.82	668.56	695.41
Cork	1038.56	1285.73	1531.00	1615.27	2026.15	962.75	1432.14	1,734.04	1,440.96	1,024.44	1,006.06
Donegal	840.72	824.87	766.74	931.46	860.69	388.16	291.78	330.28	230.46	320.78	197.43
Dublin	63.01	5.35	10.62	4.11	4.80	19.05	11.36	0.00	0.00	17.72	10.90
Galway	458.42	406.83	434.07	446.40	633.89	382.34	494.12	477.01	355.85	403.31	234.76
Kerry	842.92	1105.55	1766.81	2017.71	1824.92	913.8	893.01	770.19	664.25	548.71	478.37
Kildare	249.65	155.94	233.91	136.38	153.77	133.52	84.46	129.02	84.19	78.51	17.09
Kilkenny	227.16	488.39	358.94	530.28	528.74	456.27	296.71	544.72	321.72	229.11	196.66
Laois	224.17	267.80	553.02	436.56	464.31	148.28	183.38	203.14	71.07	144.12	177.76
Leitrim	490.16	411.23	597.97	447.31	451.86	318.54	388.23	410.98	226.97	190.64	167.22
Limerick	289.19	505.23	882.10	1182.90	1175.08	807.48	763.25	683.57	521.29	372.58	440.74
Longford	144.19	194.85	230.71	167.91	405.25	212.01	255.18	208.47	254.50	123.55	85.83
Louth	77.90	2.19	9.96	1.78	63.35	7.51	17.77	2.10	20.35	55.23	65.27
Mayo	961.78	652.50	768.10	905.01	904.30	553.58	483.17	359.48	324.88	401.55	344.33
Meath	171.50	339.77	348.83	241.50	168.52	149.34	150.2	217.38	286.65	42.07	88.90
Monaghan	44.08	23.31	23.17	47.52	47.34	58.7	73.87	59.17	107.12	69.75	56.44
Offaly	295.90	654.48	579.46	509.36	308.67	385.69	315.57	262.32	217.98	135.15	242.04
Roscommon	263.77	435.24	402.38	550.25	437.28	451.24	558.51	272.35	322.39	309.03	315.23
Sligo	303.54	148.65	416.90	524.30	305.17	241.76	226.38	253.54	171.83	204.85	132.20
Tipperary	787.66	1140.26	1195.05	1195.05	867.79	710.34	633.32	1,086.74	662.94	546.46	464.65
Waterford	308.85	386.51	357.90	126.78	481.82	230.93	220.37	238.99	307.76	310.01	155.72
Westmeath	370.27	335.72	177.45	331.93	275.80	209.15	319.85	351.00	155.36	140.92	145.11
Wexford	250.50	471.94	343.70	288.79	158.22	225.32	187.02	246.96	216.09	177.70	102.40
Wicklow	340.83	366.10	455.53	425.53	397.66	116.18	48.31	64.67	71.44	89.44	114.71
Total	10002.34	11776.01	14231.30	15147.25	14734.82	8969.48	9616.92	10,032.38	8,011.44	6,946.59	6,181.84

Private Planting 1982-2008

© Government of Ireland 2007

	1998		1999		2000		2001		2002		2003	
	Broadleaf	Conifer	Broadleaf	Conifer	Broadleaf	Conifer	Broadleaf	Conifer	Broadleaf	Conifer	Broadleaf	Conifer
	ha	ha	ha	ha	ha	ha	ha	ha	ha	ha	ha	ha
Carlow	14.85	81.26	34.59	56.20	8.43	48.54	16.57	54.60	31.21	49.46	31.23	48.1
Cavan	89.99	328.98	47.27	177.86	59.71	342.08	84.69	469.91	114.46	601.38	58.07	162.4
Clare	144.24	736.87	85.48	847.24	110.74	1356.49	126.57	1377.02	57.81	954.19	79.49	510.65
Cork	272.63	1124.60	176.23	1130.14	160.92	1475.29	165.95	1542.64	486.31	1607.38	300.43	677.46
Donegal	46.46	1145.79	37.17	839.61	60.20	894.64	70.80	945.59	72.58	827.85	7.65	380.51
Dublin	57.00	6.01	4.68	0.67	11.42	5.45	1.56	2.55	4.80	0.00	19.05	0
Galway	28.04	740.02	23.15	422.62	38.31	601.72	37.10	416.92	70.67	589.23	62.3	389.52
Kerry	61.03	993.56	61.81	1064.68	67.97	1760.50	146.32	1871.39	289.88	1535.04	187.46	742.61
Kildare	136.91	112.74	78.00	77.94	57.70	176.21	35.27	101.11	102.60	51.17	61.96	71.56
Kilkenny	26.05	336.91	70.37	432.52	44.36	377.78	69.70	460.58	123.87	404.87	168.19	288.08
Laois	79.18	205.69	16.80	269.90	116.39	467.83	48.30	393.06	82.25	393.26	30.34	117.94
Leitrim	46.40	545.00	31.18	446.60	35.91	652.49	35.53	428.35	39.70	427.05	49.82	274.82
Limerick	50.83	437.71	86.19	498.29	148.37	815.93	106.51	1076.39	202.98	972.10	151.03	656.45
Longford	12.34	237.87	37.06	178.79	46.25	233.38	54.88	120.33	138.83	277.49	50.21	161.8
Louth	7.45	91.45	2.19	0.00	2.98	6.98	1.78	0.00	16.20	47.15	6.4	1.11
Mayo	87.42	1006.87	77.62	763.63	114.63	799.11	80.16	844.19	112.54	816.12	67.28	489
Meath	101.94	82.56	150.86	195.11	161.61	187.22	97.53	151.97	45.83	122.69	108.78	40.56
Monaghan	9.39	66.24	0.00	23.31	2.09	21.08	7.38	40.14	13.36	33.98	13.97	44.73
Offaly	143.36	152.54	166.20	488.28	107.95	476.81	94.91	414.45	75.18	233.49	106.06	279.63
Roscommon	67.69	292.51	44.57	472.18	42.29	514.50	44.26	532.55	39.04	463.98	31.49	430.3
Sligo	20.16	385.91	10.37	165.32	37.19	409.30	37.95	486.35	24.40	291.03	39.71	202.05
Tipperary	193.55	704.33	266.85	887.20	357.79	894.05	258.67	936.38	180.68	712.20	199.7	510.64
Waterford	58.17	274.71	73.69	368.07	52.27	328.99	21.40	107.16	69.92	411.90	32.38	198.55
Westmeath	153.33	294.39	129.42	206.30	48.14	134.31	137.01	194.92	91.43	184.37	110.98	98.17
Wexford	73.60	176.90	121.50	394.64	79.43	264.27	74.87	213.92	51.76	106.46	80.63	144.69
Wicklow	77.34	307.69	81.99	345.66	53.52	424.31	66.87	358.66	84.57	316.94	20.76	101.02
Total	2059.334	10869.111	1915.24	10752.76	2026.57	13669.26	1922.54	13541.13	2622.86	12430.78	2075.37	7022.35
Percentages	15.92%	84.08%	15.12%	84.88%	12.91%	87.09%	*12.43%	87.57%	*17.42%	82.58%	*22.81%	77.19%

*Note that 5.45% can be added to the total broadleaf figure for 2001 to allow for amenity/landscape planting.

*Note that 5.29% can be added to the total broadleaf figure for 2002 to allow for amenity/landscape planting.

*Note that 6.01% can be added to the total broadleaf figure for 2003 to allow for amenity/landscape planting.

	2004		2005		2006		2007	
	Broadleaf ha	Conifer ha	Broadleaf ha	Conifer ha	Broadleaf ha	Conifer ha	Broadleaf ha	Conifer ha
Carlow	25.98	27.58	29.62	58.26	15.34	45.10	17.35	25.19
Cavan	106.21	329.39	83.39	219.14	41.73	175.40	46.23	253.63
Clare	203.42	630.07	176.35	572.40	222.98	474.84	232.28	436.28
Cork	602.33	831.51	600.80	1,133.24	507.88	933.08	418.8	605.64
Donegal	45.81	263.07	50.58	293.94	39.23	200.13	49.41	271.37
Dublin	11.36	0.00	0.00	0.00	0.00	0.00	10.12	7.6
Galway	116.67	410.31	121.42	377.09	131.15	241.00	72.79	330.52
Kerry	291.97	601.04	248.21	521.98	244.67	419.58	200.35	348.36
Kildare	59.23	25.23	89.63	39.39	46.38	37.81	28.35	50.16
Kilkenny	106.86	189.85	158.37	386.35	157.86	163.86	90.68	138.43
Laois	71.10	112.28	82.24	120.90	30.00	41.07	37.06	107.06
Leitrim	71.32	322.59	78.94	332.04	34.40	192.57	73.4	117.24
Limerick	123.24	644.01	161.03	522.54	145.61	375.68	134.14	238.44
Longford	52.01	203.17	36.00	172.47	61.34	193.16	25.23	98.32
Louth	8.47	9.30	2.10	0.00	10.20	10.15	28	27.23
Mayo	98.42	384.75	106.31	253.17	76.34	248.54	77.06	324.49
Meath	64.93	85.27	120.73	96.65	114.78	171.87	18.83	23.24
Monaghan	20.87	53.00	12.18	46.99	37.10	70.02	13.29	56.46
Offaly	112.63	202.94	93.56	168.76	68.76	149.22	21.4	113.75
Roscommon	90.33	484.58	45.42	241.92	42.53	279.86	63.97	245.06
Sligo	50.90	185.74	57.60	195.94	30.34	141.49	43.46	161.39
Tipperary	164.23	469.09	319.17	767.57	212.70	450.24	223.67	322.79
Waterford	32.16	188.21	68.96	170.03	95.55	212.21	112.95	197.06
Westmeath	134.81	185.04	137.51	213.49	55.30	100.06	43.53	97.39
Wexford	104.26	82.76	102.90	144.06	82.25	133.84	81.56	96.14
Wicklow	30.19	18.12	18.87	45.80	22.74	48.70	17.89	71.55
Total	2799.71	6938.90	3001.89	7094.12	2,527.16	5,509.48	2181.8	4764.79
Percentages	28.75%	71.25%	29.73%	70.27%	31.45%	68.55%	31.41%	68.59%

Public Planting 1982-2008

COUNTY	1982	1983	1984	1985	1986	1987	1988	1989	1990	1991	1992	1993	1994	1995	1996	1997	1998
Carlow	30.60	50.10	0.60	51.50	28.90	59.20	117.00	60.10	56.50	58.50	59.10	45.30	23.10	0.00	65.40	0.60	43.30
Cavan	0.50	0.50	35.10	32.10	24.60	36.30	24.50	78.60	111.50	258.50	252.20	169.90	115.10	49.30	125.19	84.85	190.89
Clare	383.00	507.00	226.00	262.00	304.00	596.00	669.00	527.00	472.10	624.40	742.90	792.60	399.70	0.00	276.93	94.47	204.40
Cork	648.00	368.00	423.00	257.00	429.00	447.00	569.00	714.00	724.10	748.80	791.10	872.90	741.60	519.00	431.39	39.19	358.66
Donegal	739.00	721.00	712.00	499.00	586.00	554.00	807.00	756.00	678.10	688.90	738.50	269.70	12.30	0.00	505.55	114.12	351.52
Dublin	35.70	3.20	0.00	7.40	0.00	0.00	3.50	24.30	32.60	19.20	10.20	40.90	58.60	15.30	0.00	0.00	0.00
Galway	787.00	634.00	774.00	762.00	629.00	462.00	595.00	416.00	442.90	714.70	585.80	1063.00	1099.00	587.00	644.20	63.76	309.64
Kerry	494.00	350.00	190.00	128.00	134.00	190.00	243.00	245.00	226.70	344.10	196.10	323.50	346.30	199.00	313.58	107.14	211.67
Kildare	0.90	75.20	0.30	54.60	32.20	39.60	276.00	93.30	79.20	39.90	10.20	0.00	0.00	0.00	0.00	0.00	0.00
Kilkenny	56.80	47.00	68.10	84.00	128.00	302.00	291.00	205.00	184.80	157.50	185.40	270.00	224.00	489.00	158.23	36.10	135.80
Laois	242.00	260.00	118.00	118.00	172.00	134.00	482.00	254.00	194.20	281.40	282.30	215.60	412.90	589.00	141.40	24.30	60.70
Leitrim	167.00	241.00	159.00	113.00	286.00	239.00	283.00	206.00	184.00	277.70	306.70	32.80	0.00	0.00	195.28	28.09	101.24
Limerick	177.00	159.00	201.00	168.00	179.00	159.00	164.00	202.00	198.90	329.10	250.40	191.50	223.30	848.00	230.43	18.72	199.35
Longford	36.60	26.90	13.60	12.10	22.70	18.80	4.20	28.30	56.80	94.50	118.40	49.10	144.10	0.00	68.10	12.75	106.02
Louth	0.00	0.00	0.00	0.00	0.00	0.00	0.00	24.30	34.10	7.80	9.50	15.40	11.40	3.50	0.00	0.00	21.00
Mayo	1327.00	1493.00	1252.00	1228.00	1000.00	847.00	857.00	528.00	767.70	711.30	468.60	529.50	533.90	232.00	274.75	0.00	132.51
Meath	5.70	1.90	8.50	0.00	0.80	2.60	0.00	4.50	5.10	7.00	23.50	5.10	0.00	0.00	0.00	0.00	13.00
Monaghan	21.00	10.70	35.10	29.80	33.90	23.00	4.90	27.10	28.40	59.40	44.60	118.80	147.90	0.00	8.60	0.00	31.55
Offaly	59.10	21.90	0.00	46.80	26.60	37.00	237.00	523.00	220.00	359.10	369.90	189.50	121.30	180.00	10.10	0.00	0.00
Roscommon	147.00	39.00	78.80	160.00	66.60	149.00	186.00	79.30	175.70	213.40	376.10	234.40	248.60	45.70	248.94	30.55	96.43
Sligo	60.70	103.00	172.00	48.80	132.00	126.00	83.50	129.00	238.90	480.20	229.50	1.60	0.00	0.00	176.05	41.47	102.53
Tipperary	249.00	232.00	253.00	184.00	141.00	418.00	483.00	494.00	591.10	524.40	540.90	520.60	844.10	1061.00	258.45	59.30	110.22
Waterford	69.60	216.00	189.00	146.00	138.00	157.00	266.00	271.00	223.40	254.60	308.00	482.50	494.30	1105.00	166.42	61.15	24.03
Westmeath	55.20	0.00	40.50	11.10	64.30	3.00	103.00	88.10	69.80	38.40	57.80	142.00	108.20	105.00	14.10	0.00	77.45
Wexford	27.80	18.90	1.00	0.00	5.40	74.30	71.60	128.00	131.40	145.40	193.80	90.20	84.60	13.60	3.40	2.40	0.00
Wicklow	198.00	120.00	243.00	224.00	124.00	323.00	291.00	524.00	542.20	417.10	413.60	161.00	227.60	325.00	109.50	41.85	44.20
TOTAL	6018.20	5699.30	5193.60	4627.20	4688.00	5396.80	7111.20	6629.90	6670.20	7855.30	7565.10	6827.40	6621.90	6366.40	4425.99	860.81	2926.11

Public Planting 1982-2008

COUNTY	1999	2000	2001	2002	2003	2004	2005	2006	2007	2008
Carlow	26.50	0.00	0.00	0.00	0.00	0.00	0.00	0.00	0.00	0.00
Cavan	0.00	48.75	0.00	16.27	0.00	0.00	0.00	0.00	0.00	0.00
Clare	53.57	90.16	46.20	2.80	2.40	33.69	12.90	0.00	0.00	0.00
Cork	20.63	105.21	93.32	67.54	15.14	1.70	0.00	0.00	0.00	0.00
Donegal	51.91	188.10	84.93	39.74	0.00	17.10	14.24	8.90	0.00	0.00
Dublin	0.00	6.25	0.00	0.00	0.00	0.00	0.00	0.00	0.00	0.00
Galway	38.94	205.96	7.62	26.01	69.48	32.86	21.50	16.30	0.00	27.94
Kerry	20.94	61.66	0.00	0.00	16.27	0.00	0.00	0.00	0.00	0.00
Kildare	0.00	0.00	0.00	0.00	0.00	0.00	0.00	0.00	0.00	0.00
Kilkenny	14.50	63.20	0.00	0.00	0.00	0.00	0.00	0.00	0.00	2.17
Laois	18.90	31.20	4.80	11.20	0.00	0.00	0.00	0.00	0.00	0.00
Leitrim	66.55	90.43	16.57	14.89	6.10	5.68	0.00	0.00	0.00	0.00
Limerick	79.16	82.20	0.00	0.00	0.00	4.00	0.00	0.00	0.00	0.00
Longford	21.00	48.92	7.30	11.07	0.00	0.00	0.00	0.00	0.00	0.00
Louth	0.00	0.00	0.00	0.00	0.00	0.00	0.00	0.00	0.00	0.00
Mayo	188.75	145.64	19.34	24.36	2.70	0.00	0.00	0.00	0.00	0.00
Meath	6.20	0.00	8.00	0.00	0.00	0.00	0.00	0.00	0.00	0.00
Monaghan	0.00	0.00	0.00	0.00	0.00	0.00	0.00	0.00	0.00	0.00
Offaly	0.00	5.30	0.00	0.00	0.00	0.00	0.00	0.00	0.00	0.00
Roscommon	81.51	154.61	26.56	65.74	10.55	16.40	14.99	0.00	0.00	36.77
Sligo	27.04	29.59	0.00	10.26	0.00	10.26	0.00	0.00	0.00	0.00
Tipperary	13.79	56.79	0.00	25.09	0.00	0.00	0.00	0.00	0.00	0.00
Waterford	55.25	23.36	1.78	0.00	0.00	0.00	0.00	0.00	0.00	0.00
Westmeath	0.00	5.00	0.00	0.00	0.00	0.00	0.00	0.00	0.00	0.00
Wexford	44.20	0.00	0.00	0.00	0.00	0.00	0.00	0.00	0.00	0.00
Wicklow	61.55	22.30	0.00	3.85	5.60	0.00	0.00	0.00	0.00	0.00
TOTAL	890.89	1464.63	316.42	318.82	128.24	121.69	63.63	25.20	0.00	66.88

1990 Private Only					1991 Private Only				1992 Private Only				1993 Private Only			
AREA	NO.	HA	Total area	Cases	NO.	HA	Total area	Cases	NO.	HA	Total area	Cases	NO.	HA	Total area	Cases
			%	%			%	%			%	%			%	%
<2	138	183.08	2.00	16.57	181	220.66	1.95	15.43052	217	230.09	2.52	21.94135	297	375.70	4.10	24.24
>2 <=4	232	750.73	8.21	27.85	283	848.50	7.51	24.12617	238	709.90	7.77	24.06471	308	918.31	10.01	25.14
>4 <=6	110	548.24	5.99	13.21	157	789.45	6.99	13.38448	140	710.80	7.78	14.15571	181	901.60	9.83	14.78
>6 <=10	114	947.19	10.35	13.69	232	1854.00	16.42	19.77835	131	1046.87	11.46	13.2457	202	1587.00	17.30	16.49
>10 <=20	135	1981.40	21.66	16.21	200	2771.30	24.54	17.0503	166	2311.82	25.31	16.78463	150	2138.30	23.32	12.24
>20 <=50	77	2361.70	25.82	9.24	96	2879.60	25.50	8.18	76	2208.16	24.17	7.68	73	2023.80	22.07	5.96
>50 <=100	23	1646.07	18.00	2.76	20	1419.70	12.57	1.71	15	1059.90	11.60	1.52	11	782.00	8.53	0.90
>100	4	728.87	7.97	0.48	4	509.00	4.51	0.34	6	856.90	9.38	0.61	3	444.10	4.84	0.24
TOTAL	833	9147.28	100	100	1173	11292.21	100	100	989	9134.44	100	100	1225	9170.81	100	100

1994 Private Only					1995 Private Only				1996 Private Only				1997 Public and Private			
AREA	NO.	HA	Total area	Cases	NO.	HA	Total area	Cases	NO.	HA	Total area	Cases	NO.	HA	Total area	Cases
			%	%			%	%			%	%			%	%
<2	154	183.49	1.43	13.40	187	240.72	1.39	11.62213	209	259.02	1.56	12.37419	243	226.13	1.98	17.87
>2 <=4	215	665.33	5.18	18.71	336	1019.00	5.88	20.88254	338	987.36	5.96	20.01184	287	836.61	7.31	21.10
>4 <=6	184	926.76	7.22	16.01	250	1240.80	7.15	15.5376	255	1236.58	7.47	15.10	203	989.82	8.65	14.93
>6 <=10	220	1743.37	13.58	19.15	317	2497.80	14.40	19.70	369	2890.50	17.46	21.84725	275	2105.70	18.40	20.22
>10 <=20	214	3018.17	23.51	18.62	312	4375.40	25.23	19.39093	337	4638.73	28.02	19.95263	214	2907.43	25.41	15.74
>20 <=50	136	3952.62	30.79	11.84	170	5061.20	29.18	10.56557	156	4602.57	27.80	9.24	127	3708.89	32.41	9.34
>50 <=100	16	1002.72	7.81	1.39	31	2128.90	12.28	1.93	21	1484.98	8.97	1.24	11	669.18	5.85	0.81
>100	10	1344.27	10.47	0.87	6	779.45	4.49	0.37	4	455.92	2.75	0.24	0.00	0.00	0.00	0.00
TOTAL	1149	12836.73	100	100	1609	17343.27	100.00	100	1689	16555.65	100	100	1360	11443.76	100	100

1998 Public and Private					1999 Public and Private				2000 Public and Private				2001 Public and Private			
AREA	NO.	HA	Total area	Cases	NO.	HA	Total area	Cases	NO.	HA	Total area	Cases	NO.	HA	Total area	Cases
			%	%			%	%			%	%			%	%
<=2	172	174.04	1.35	13.79	130	153.39	1.21	10.40833	118	156.50	1.00	7.96	109	141.06	0.91	7.57
>2 <=4	201	599.52	4.64	16.12	238	691.53	5.46	19.05524	237	716.83	4.57	15.9919	223	681.01	4.40	15.5
>4 <=6	178	868.99	6.72	14.27	189	923.73	7.29	15.13211	204	1032.24	6.58	13.76518	200	1003.15	6.49	13.9
>6 <=10	257	1993.68	15.42	20.61	267	2044.13	16.14	21.3771	359	2813.45	17.92	24.22402	325	2616.60	16.92	22.59

>10 <=20	291	4056.00	31.37	23.34	278	3849.02	30.38	22.25781	385	5380.36	34.28	25.97841	418	5867.69	37.95	29.05
>20 <=50	123	3654.60	28.27	9.86	129	3729.99	29.44	10.32826	169	5039.46	32.11	11.40	149	4295.88	27.78	10.35
>50 <=100	24	1473.83	11.40	1.92	17	1045.19	8.25	1.36	10	557.09	3.55	0.67	15	858.28	5.55	1.04
>100	1	107.78	0.83	0.08	1	231.00	1.82	0.080064	0.00	0.00	0.00	0.00	0	0.00	0.00	0.00
TOTAL	1247	12928.44	100	100	1249	12667.98	100	100	1482	15695.93	100	100	1439	15463.67	100	100

© Government of Ireland 2007

AREA	2002 Public and Private				NO.	2003 Public and Private				NO.	2004 Public and Private				NO.	2005 Public and Private			
	NO.	HA	Total area %	Cases %		NO.	HA	Total area %	Cases %		NO.	HA	Total area %	Cases %		NO.	HA	Total area %	Cases %
<=2	163	212.33	1.41	10.49	108	141.12	1.55	10.53	148	183.60	1.89	13.04	142	185.60	1.84	11.54			
>2 <=4	239	714.47	4.75	15.38	194	591.61	6.50	18.91	203	605.50	6.22	17.89	243	707.21	7.00	19.74			
>4 <=6	217	1075.63	7.15	13.96	155	765.48	8.41	15.11	177	868.75	8.92	15.59	231	1160.17	11.49	18.77			
>6 <=10	396	3098.54	20.58	25.48	223	1740.77	19.13	21.73	252	1958.65	20.11	22.20	285	2232.10	22.11	23.15			
>10 <=20	383	5408.06	35.93	24.65	264	3607.51	39.65	25.73	275	3882.19	39.86	24.23	242	3378.16	33.46	19.66			
>20 <=50	150	4211.19	27.97	9.653	82	2251.23	24.74	7.99	80	2239.92	23.00	7.05	88	2432.77	24.10	7.15			
>50 <=100	6	333.42	2.21	0.39	0	0.00	0.00	0.00	0	0.00	0.00	0.00	0	0.00	0.00	0.00			
>100	0	0.00	0.00	0.00	0	0.00	0.00	0.00	0	0.00	0.00	0.00	0	0.00	0.00	0.00			
TOTAL	1554	15053.64	100	100	1026	9097.72	100	100	1135	9738.61	100	100	1231	10096.01	100	100			

© Government of Ireland 2007

AREA	2006 Public and Private				NO.	2007 Public and Private				NO.	2008 Public and Private			
	NO.	HA	Total area %	Cases %		NO.	HA	Total area %	Cases %		NO.	HA	Total area %	Cases %
<=2	135	178.56	2.22	13.31	137	181.65	2.61	14.65	116	139.46	2.23	14.83		
>2 <=4	195	575.99	7.17	19.23	212	620.90	8.94	22.67	148	442.84	7.09	18.93		
>4 <=6	161	798.11	9.93	15.88	165	816.31	11.75	17.65	107	526.13	8.42	13.68		
>6 <=10	246	1,906.16	23.72	24.26	194	1,515.92	21.82	20.75	200	1,616.57	25.87	25.58		
>10 <=20	225	3,088.81	38.43	22.19	177	2,405.95	34.63	18.93	168	2,276.79	36.44	21.48		
>20 <=50	52	1,489.01	18.53	5.13	50	1,405.86	20.24	5.35	43	1,246.93	19.95	5.50		

>50 <=100	0	0	0.00	0.00	0	0	0.00	0.00	0	0	0.00	0.00
>100	0	0	0.00	0.00	0	0	0.00	0.00	0	0	0.00	0.00
TOTAL	1,014	8,036.64	100	100	935	6,946.59	100.00	100.00	782	6,248.72	100.00	100.00

© Government of Ireland 2007

Carlow	49.38	
Cavan	197.23	
Clare	695.41	
Cork	1,006.06	
Donegal	197.43	
Dublin	10.90	
Galway	234.76	27.94
Kerry	478.37	
Kildare	17.09	
Kilkenny	196.66	2.17
Laois	177.76	
Leitrim	167.22	
Limerick	440.74	
Longford	85.83	
Louth	65.27	
Mayo	344.33	

Meath	88.90		
Monagha	56.44		
Offaly	242.04		
Roscomm	315.23	36.77	
Sligo	132.20		
Tipperary	464.65		
Waterford	155.72		
Westmeath	145.11		
Wexford	102.40		
Wicklow	114.71		
	6,181.84	66.88	6,248.72