

Roundwood Timber Haulage

- 1. Haulage Infrastructure**
- 2. Load Securing**



John Lyons

Oct 2016

John.lyons@Coillte.ie

Haulage Infrastructure

Approx 230 trucks operating daily comprising;

- **Artics,**
 - **with dedicated skeletal trailers, timber specific bolsters and stanchions**
 - **With flat trailers**
 - **With cranes and w/o cranes**
- **Rigids and trailers, with cranes**

Trends

	2004	2014
6 Axle Trucks;	46%	86%
Artics;	59%	74%
Average age;	4.2 yrs	8 yrs



Gross Weight – 46,300

Tare Weight – 17,200

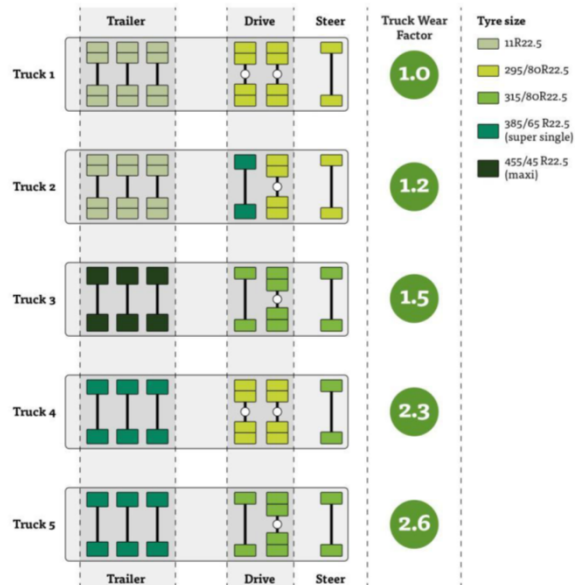
This unit is over 4.3 tonnes overloaded

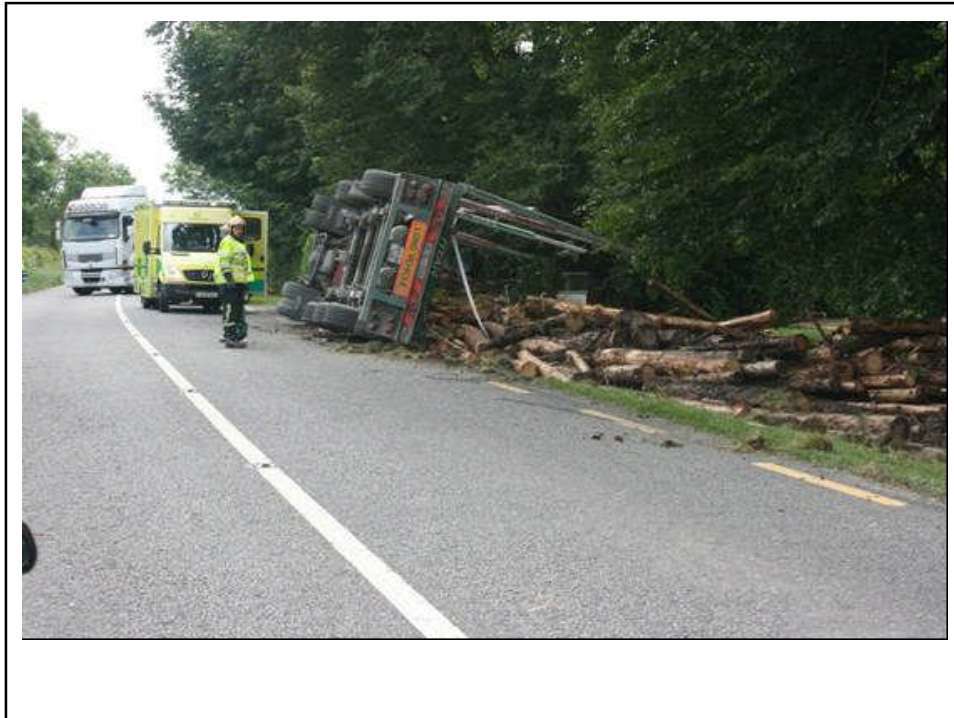


Volvo FH 12 420 hp, Epsilon Crane.
 Dennison Trailer, Skeletal body, Alucar Bolsters
 GVW.....39.440 Tonnes
 Tare Wt.....17.58 Tonnes
 Payload.....21.860 Tonnes

(6.56 T under legal limit for this configuration)

Tyre Wear Factors, Relative differnces





Load Securing

- **Questions raised by HSA in 2014 following launch of Good Practice Guide for Managing Timber Transport.**
 - **ISSUES.....number of straps required, headboards**
- **FITG and HSA met**
- **Subgroup of FITG set up to look into this**
- **Meetings held**
 - **Literature Review....International**
 - **Consultations with hauliers, trailer manufacturers**
 - **Data collected, friction factors, tensions in straps, etc**
- **Resulting in;**
 - **Presentation to HSA and Gardai in Phoenix Park**
- **Outcome**
 - **HSA producing Load Series Fact Sheet, and**
 - **Recommendation that Industry (FITG) produce more detailed guidelines.**

- **Subgroup;**
John Lyons (FITG), Gerry McMorrow (Haulier), Scott Robinson (trailer manufacturer), Des Phelan (Coillte)
- **Meetings/research/innovations.**
- **Funding applic/approval from Dept of Ag. and haulage consultant engaged to assist.**
- **Document launch, Q1 2017.**
- **Will be a major contribution to Good Practice at operational level**
 - **training aid**
 - **part of hauliers Safety Statement**
 - **aid safety and compliance.**



Other Load Securing Considerations

- **Responsibilities**
- **Anchoring points for lashings, and any connectors**
- **Strap rating, condition**
- **Sliding Bunks (no existing guidelines)**
- **Headboards, Timber Specific bunks vs other**
- **Load variability, log lengths etc,**
- **Risk assessments, individual loads**
- **Safety in Loading, in Transit and unloading**
- **Compliance.....with stds and operational guidelines**