

NATIONAL FORESTRY CONFERENCE

**Timber haulage and public roads
Local Authority – Issues and Challenges**

Shay O'Connor
Senior Engineer
Leitrim County Council



Presentation Outline

- ▶ Road Network
- ▶ Roads Programme of Works
- ▶ Forestry Industry
- ▶ Forest Entrance and Forest Roads
- ▶ Felling License
- ▶ Managing Timber Transport Good Practice Guide
- ▶ Moving Forward

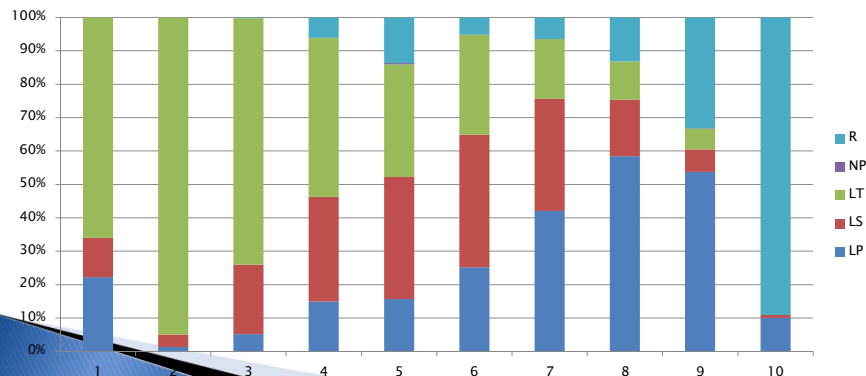
Road Network

- ▶ County Leitrim
- ▶ 2,164km public roads
 - 57km National Primary
 - 336km Regional Roads
 - 669km Local Primary
- ▶ Carry over 90% Traffic and able to support heavy loads
- 563km Local Secondary
- 539km Local Tertiary
- ▶ 50% by Length but carry very little traffic but most forests located here

Road Network cont.

- ▶ Condition Rating
- ▶ Rating 1 – 10, 10 Excellent, 1 Impassable

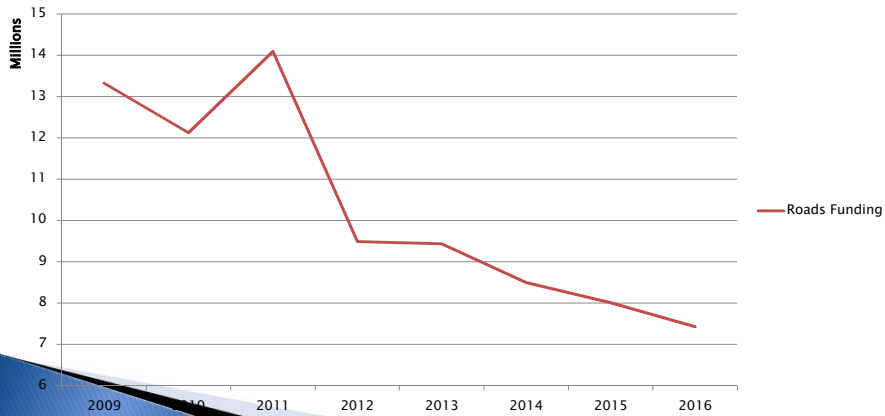
Road Class Percentage by Rating



Roads Programme of Works

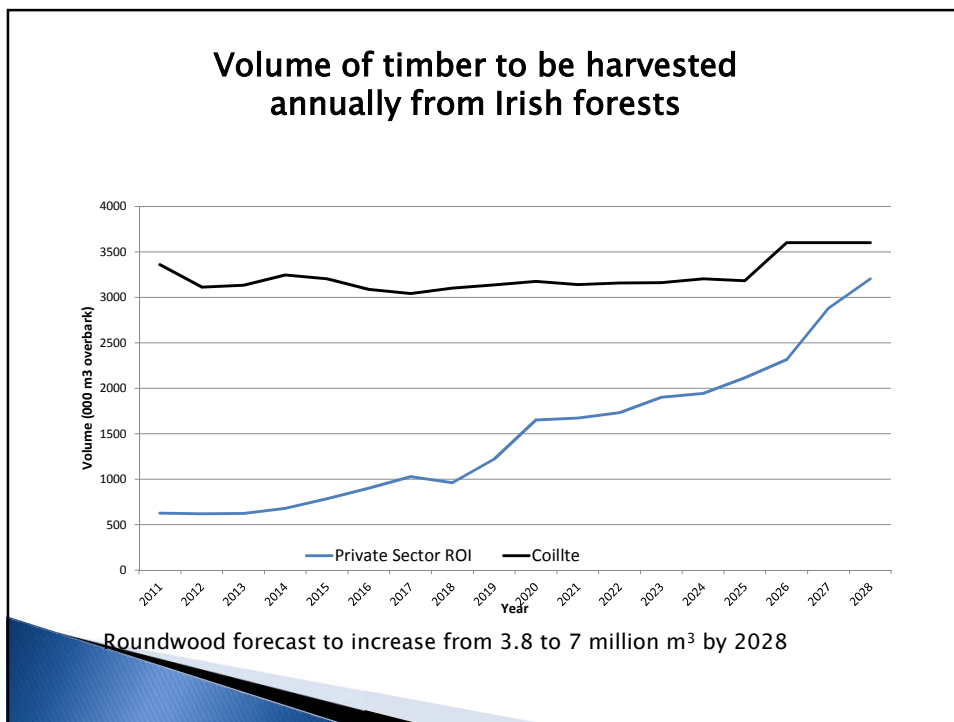
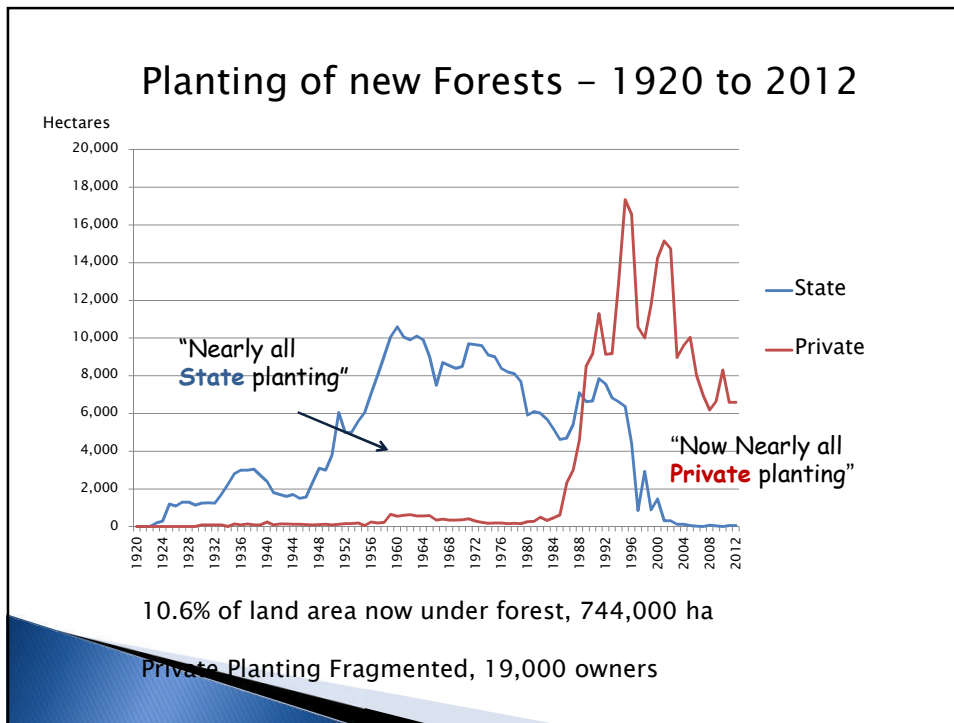
▸ Local Roads Budget

Roads Funding



Roads Programme

- 3 Year Programme 2016 – 2018
- 50% of Required Budget
- Programme set by Engineering Requirements
- Approved by Elected Members



Forest Industry

- ▶ 19,000 Private Forest Owners
- ▶ 250 Foresters
- ▶ Building Relationships
- ▶ Planning and Forecasting

Forest Entrances and Forest Roads

- ▶ Planning Permission
- ▶ Technical Standard Document
- ▶ Construction Forest Roads

Felling License

- ▶ No Roads Input
- ▶ License Holder
- ▶ Agreed Routes

Good Practice Guide

- ▶ Partnership Approach
- ▶ Forestry Planning and Forecasting
- ▶ Vehicle Technology
- ▶ Agreed Routes

Vehicle Technology

- ▶ Central Tyre Inflation
- ▶ “Maxi” wide tyres
- ▶ Vehicle Tracking/On Board Weighing

Agreed Routes

- ▶ Pilot Project
- ▶ Operation of Agreed Routes

Moving Forward

- ▶ Consultation
- ▶ Information Exchange
- ▶ Funding
- ▶ Community Involvement Schemes
- ▶ Clar Programme