

The logo for PastureBase IRELAND features a stylized green leaf icon to the left of the text. The word 'Pasture' is in a dark green font, 'Base' is in a lighter green font, and 'IRELAND' is in a smaller, dark green font below 'Base'.

PastureBase
IRELAND

&

AgriNet

Joining together to create the **ONE Grassland
Management Programme for Irish farmers**

Email

Password

LOG IN



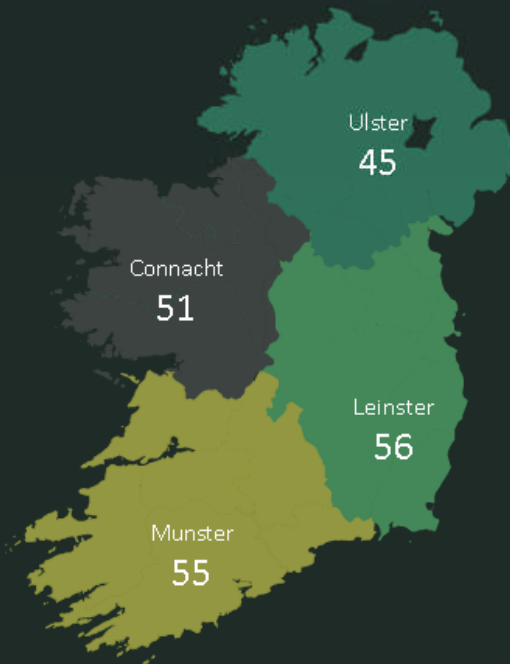
Remember me next time

[Forgot password?](#)

Login

Support

GRASS GROWTH



Last Updated 06/09/2016

Dry Matter Kg / Ha / Day



Reasons to Measure Grass

WEEKLY DETAILS

CURTINS FARM - RESEARCH FARM

Dry Matter%	12%
Farm Cover	12%
Cover/LU	12%
Growth/Ha	12%
Demand/Ja	12%
Demand/Day	12%
Total LU	12%
Demand/Ja	12%
Rotation length	12%
Residual cm	12%

VIEW FULL WEDGE

Tweets by @teagasc

Teagasc Retweeted

PastureBase Ireland
@PastureBase

AUTUMN TARGETS



Autumn Grazing Targets

Date	Cover/Cow (Kg DM)	Average Farm Cover (Kg DM/ha)	Rotation Length
STOCKING RATE OF 2.5 LU/HA			
Mid August	200	500	25 Days
1 st September	300	750	30 Days
Mid September	400-450	1,000-1,100	35 Days
1 st October	500	1,200	40 Days
1 st November	80% of your grazing platforms should be closed for Spring at this stage		
Fully Heused	550-600		
STOCKING RATE OF 3.0 LU/HA			
Mid August	250	750	25 Days
1 st September	350	900	30 Days
Mid September	470	1,100	35 Days
1 st October	580	1,350	40 Days
1 st November	85% of your grazing platforms should be closed for Spring at this stage		
Fully Heused	600-650		
STOCKING RATE OF 3.5 LU/HA			
Mid August	300	750	25 Days
1 st September	400	900	30 Days
Mid September	500	1,200	35 Days
1 st October	620	1,475	40 Days
1 st November	90% of your grazing platforms should be closed for Spring at this stage		
Fully Heused	700-750		

*on heavier soil a lower Average Farm Cover should be achieved at fully heused



21h

Teagasc Retweeted

Liffey Mills
@LiffeyMills

Save the date guys, this promises to be a great informative day next week



live admin



Farm: Ballyhaise

Home

FARM OPTIONS

Paddocks

Cultivars

Soil Tests

Fertiliser/Slurry Applications

Silage Cuts

Grass Wedge

Spring Rotation Planner

Budgets

REPORTS

Grass Wedge

Paddock Summary

Distribution of Growth

Weekly Grass

Rotation Plan

Summary Options

Last Cover:
456 on 01/08/2016



Active Spring Planner:
100% grazed to
01/04/2016



Last Budget
to 02/04/2016



Annual Tonnage:
YTD 4.45 kgDMI/Ha



Last Fertilizer/Slurry:
01/10/2016



Last Reseeding:
01/10/2015



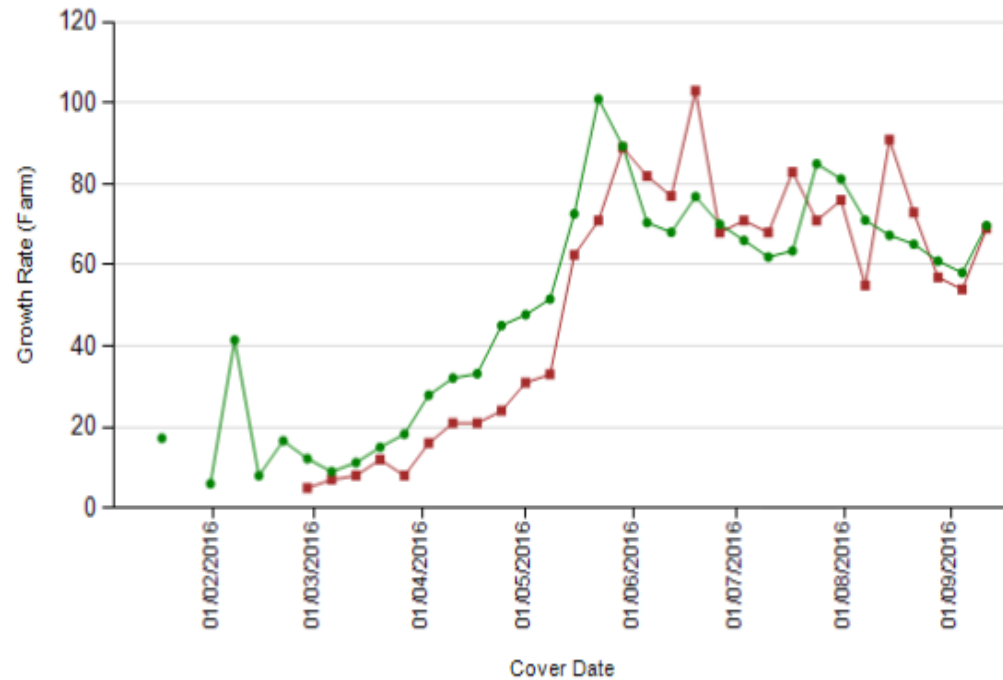
DAILY INFO 21 Apr 2016, 8:24 am

Soil type, minimum annual temperature, and rainfall are important factors in pasture management. Sheepwalk is an area of grassland where sheep can roam freely.

Grass Growth Curve 2015 vs. 2016

Zoom In Zoom Out Reset

Ballyhaise Group: Agricultural Colleges



Telephone support is
046-9245118
9am to 9pm

Smart Phone Compatible

Home

FARM OPTIONS

- Paddocks
- Grass Measurements
- Soil Tests
- Fertilizer APp
- Silage Cuts
- Rotation Plan
- Budgets
- Spring Rotation
- Autumn Rotation
- Annual Tonnage
- Reseeding

REPORTS

- Grass Wedge
- Paddock Summary
- Distribution of Growth
- Weekly Grass
- Rotation Plan

Paddocks

Click here to **expand the filters**

ADD NEW PADDOCK

Main Details

CODE	AREA	WALK ORDER	
+ 2	0.65	2	Edit
+ 3	0.85	3	Edit
+ 4	0.85	4	Edit
+ 5	0.6	5	Edit
+ 6	0.59	6	Edit
+ 7	0.86	7	Edit
+ 8	0.78	8	Edit

Spring Plan Name * Spring Plan 2016.

Farm Area (Ha)* 141.18

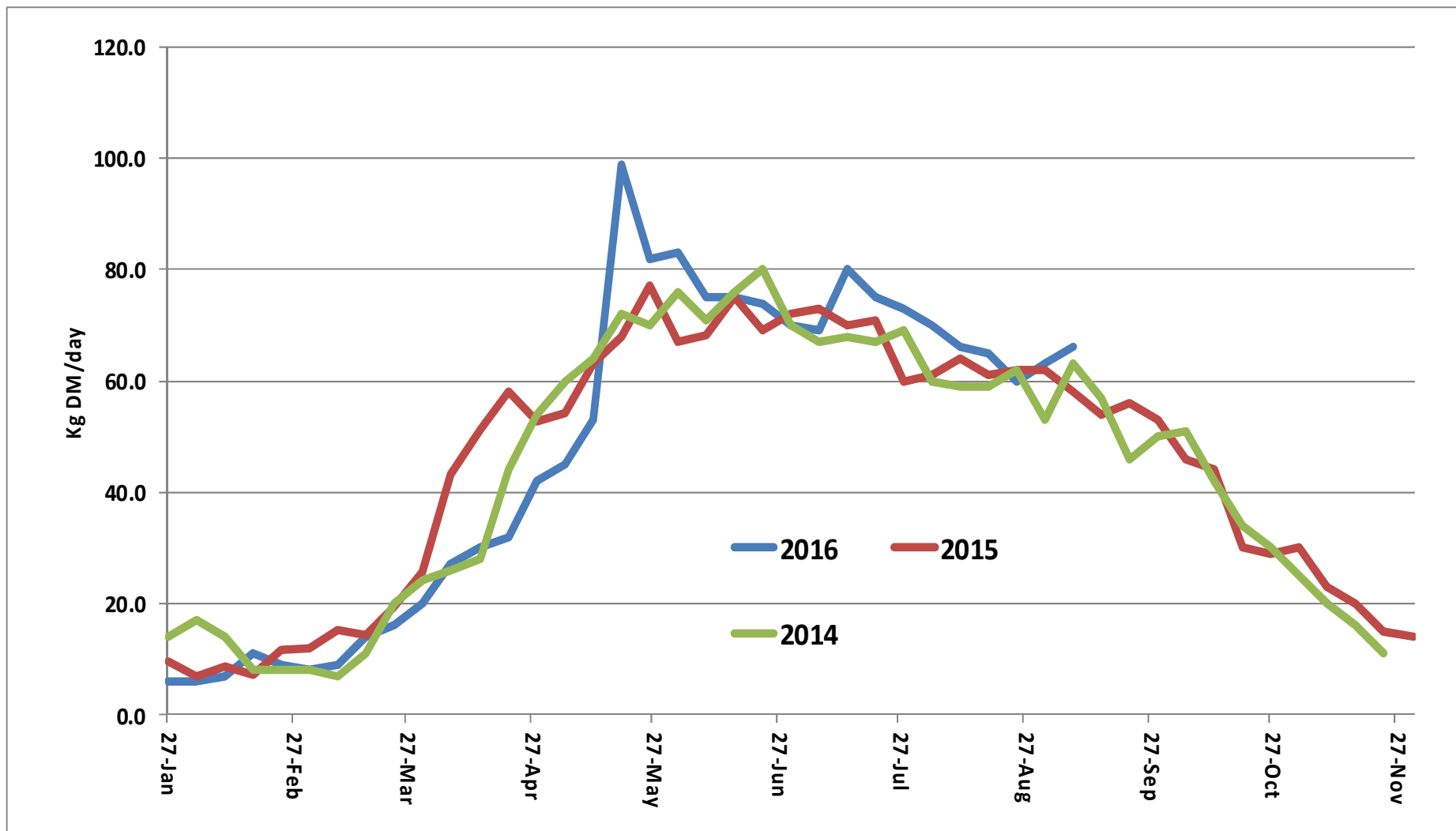
Start of Grazing * 01/02/2016

Start of 2nd Round * 03/04/2016

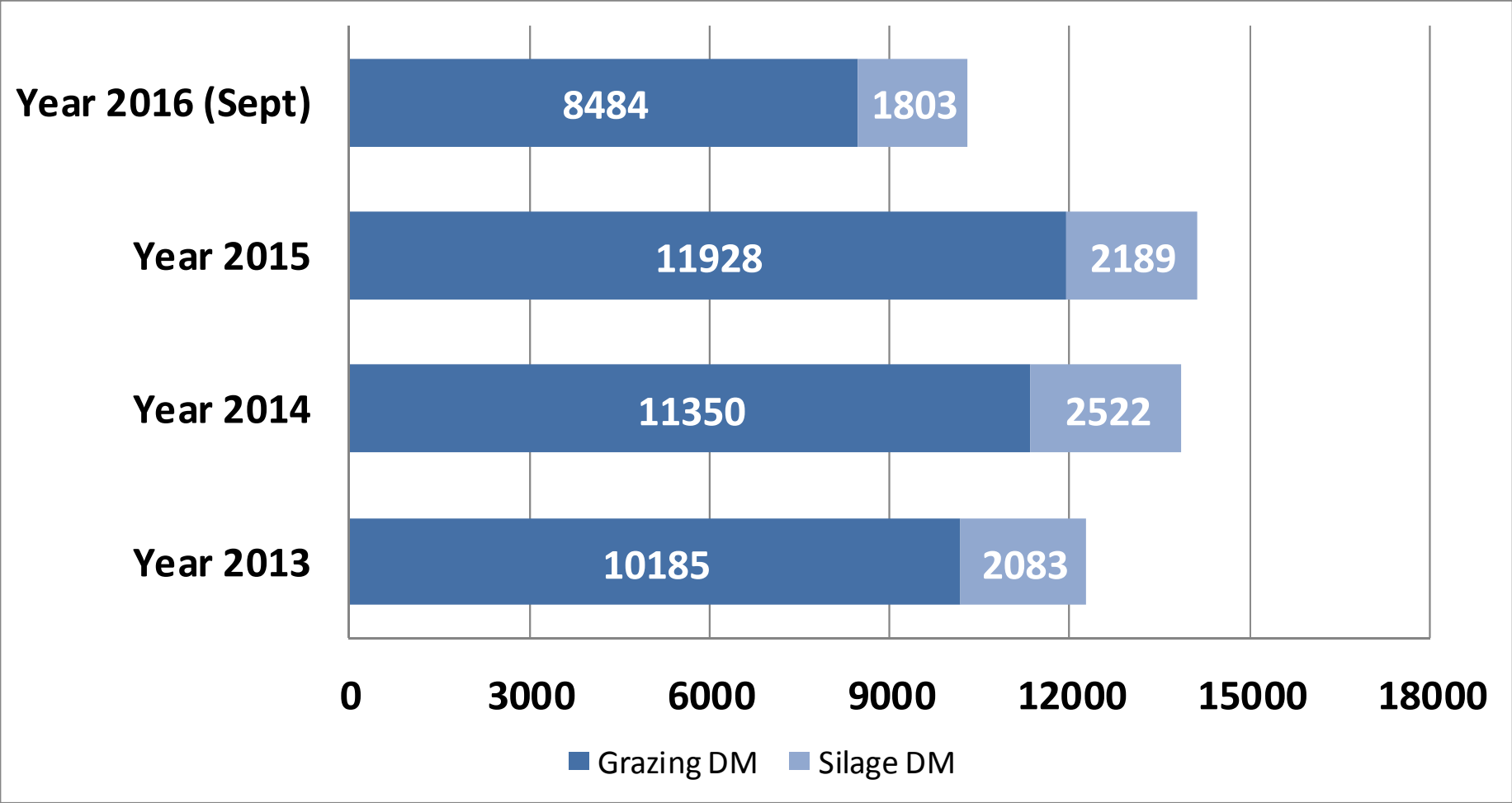
Enter notes here

DELETE

UPDATE



PastureBase Ireland Dairy Farms DM Production (2016)



PastureBase Ireland & AgriNet Grass

Agreed on January 2016

Started Development of the 1st April

Working on the SRP & Grass Wedge and interface

New PastureBase Ireland going live in **January 2017**

Improved Spring Rotation Planner

Early 2017 start development Feed Budget & Autumn Planner

Main Priority is the **FARMER**