

Teagasc Heavy Soils Programme

2018: Summary of weather data
across programme farms

2018 Monthly Rainfall summary

	Jan	Feb	Mar	Apr	May	Jun	Jul	Aug	Sep	Oct	Nov	Dec	Total
Ballinagree	231.2	91.2	144.2	183.0	85.4	33.8	60.4	49.0	94.2	96.0	219.4	281.6	1569.4
Kishkeam	327.2	105.8	122.8	144.6	71.4	44.8	53.4	86.6	100.0	86.6	98.4	162.6	1404.2
Castleisland	259.2	96.2	95.6	112.8	75.0	19.4	64.2	85.6	100.6	82.0	139.2	209.4	1339.2
Athea	216.4	100.2	76.2	98.0	64.4	11.6	59.8	87.6	118.6	71.0	111.6	168.0	1183.4
Rossmore	242.8	64.2	80.8	102.1	43.4	72.0	41.8	45.8	81.2	59.8	116.8	178.2	1128.9
Crossmolina	227.0	106.2	54.6	102.4	38.4	43.2	43.0	98.1	61.6	53.2	88.4	201.0	1117.1
Stradone	175.4	71.6	87.6	74.4	53.8	40.6	84.4	122.2	53.2	54.6	124.4	118.0	1060.2
Doonbeg	156.7	86.5	66.0	80.6	53.2	10.4	65.4	89.8	81.8	65.0	114.2	183.4	1053.0
Lisselton	180.6	89.8	53.2	84.8	74.4	15.2	38.6	71.4	97.2	60.4	108.4	131.0	1005.0
Swans Cross	119.6	76.6	58.4	66.2	58.4	89.4	73.2	112.5	55.0	38.4	133.2	100.0	980.9
Average	213.6	88.8	83.9	104.9	61.8	38.0	58.4	84.9	84.3	66.7	125.4	173.3	1184.1

2018 Totals summary

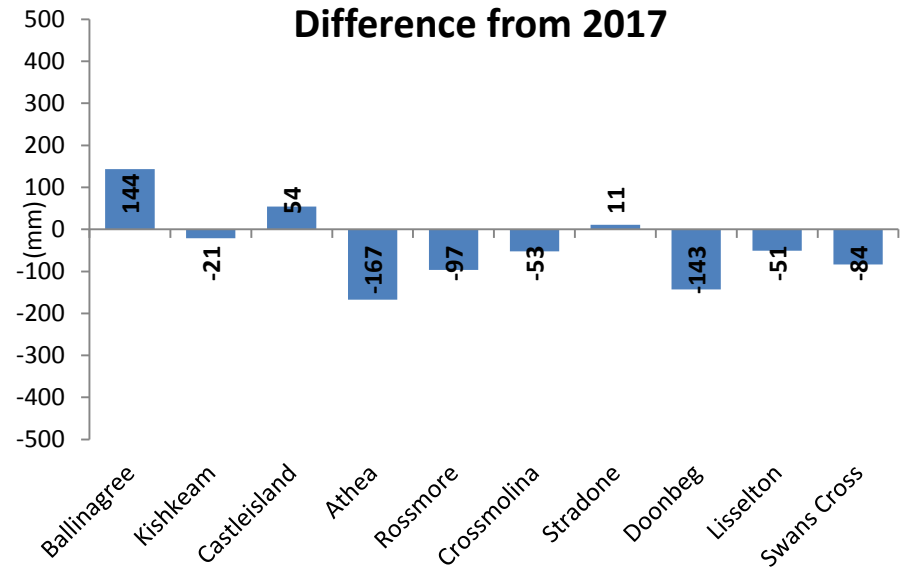
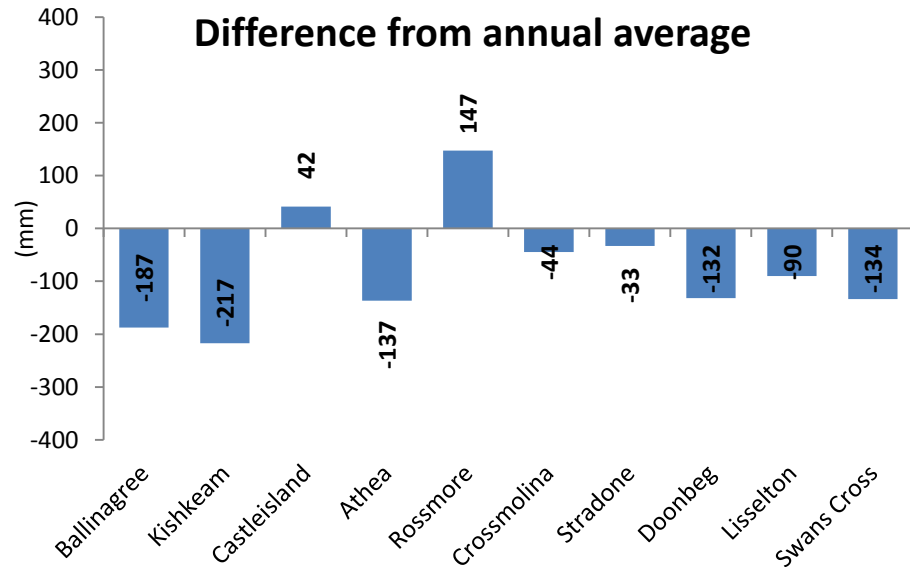
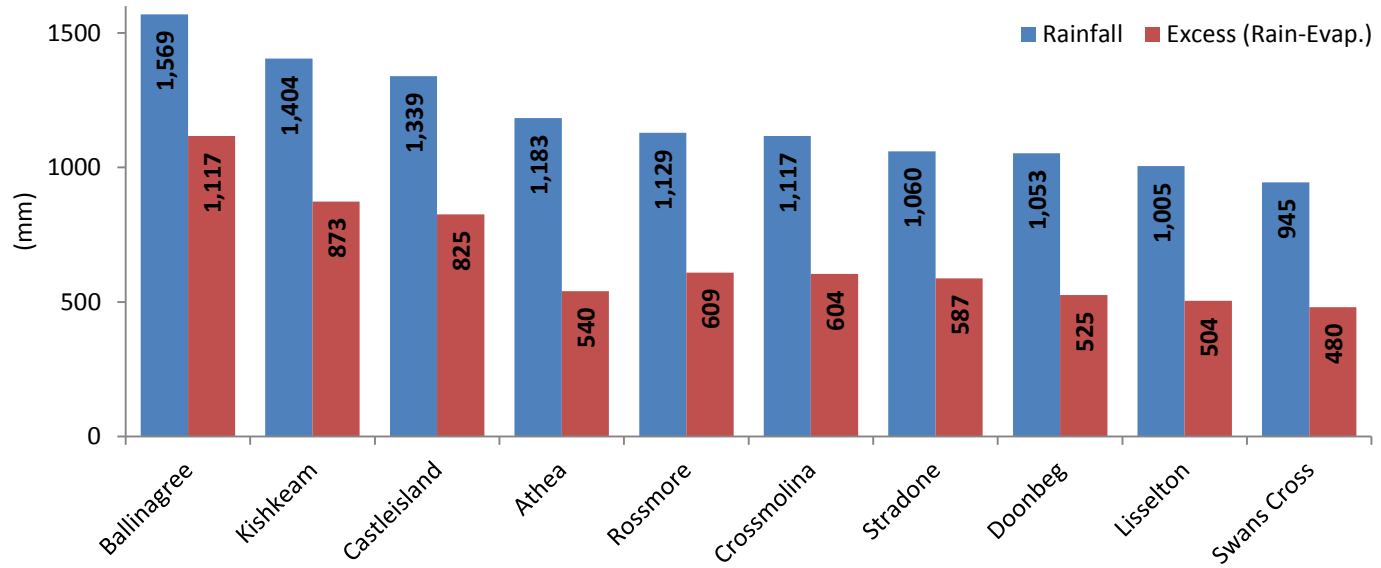
	Rainfall (mm)	Evap. (mm)	Excess (Rain-Evap)	Long Term Average (mm)	Difference from LTA (mm)
Ballinagree	1569.4	452.4	1117.0	1621.5	-187.3
Kishkeam	1404.2	531.1	873.1	1756.7	-217.3
Castleisland	1339.2	514.0	825.2	1320.2	41.6
Athea	1183.4	643.0	540.4	1297.6	-136.8
Rossmore	1128.9	519.7	609.2	981.8	147.1
Crossmolina	1117.1	513.3	603.8	1185.1	-44.4
Stradone	1060.2	473.0	587.2	1161.5	-33.1
Doonbeg	1053.0	527.9	525.1	1095.3	-132.1
Lisselton	1005.0	500.6	504.4	1093.3	-90.3
Swans Cross	980.9	464.4	516.5	1078.5	-97.6
Mean	1184.1	514.0	670.2	1259.2	-75.0

Site details

Site	Northing	Westing	Elevation (m) ASL
Ballinagree	51°59'	08°56'	231
Kishkeam	52°12'	09°08'	233
Castleisland	52°13'	09°28'	36
Athea	52°27'	09°19'	139
Rossmore	52°36'	08°01'	105
Crossmolina	54°06'	09°17'	15
Stradone	53°57'	07°11'	180
Doonbeg	52°44'	09°30'	9
Lisselton	52°28'	09°33'	8
Swans Cross	54°09'	07°02'	115

Note: ASL = above sea level

2018 Weather Summaries



Athea						
	Rain	Evap.	Air Temp	Soil Temp		Long term average rain
Jan	216.4	15.4	5.6	5.9		140.2
Feb	100.2	22.9	3.4	4.6		100.3
Mar	76.2	34.4	3.8	4.4		106.8
Apr	98.0	48.3	8.0	8.1		77.8
May	64.4	75.0	11.8	10.9		83.5
Jun	11.6	98.7	15.7	13.9		81.6
Jul	59.8	97.0	15.7	15.1		92.1
Aug	87.6	78.4	14.1	14.3		110.3
Sep	118.6	61.2	11.7	12.4		102.9
Oct	71.0	48.0	9.5	10.5		140.9
Nov	111.6	31.5	7.4	8.4		137.1
Dec	168.0	32.1	8.1	8.3		146.7
	1183.4	643.0	9.6	9.7		1320.2

Crossmolina						
	Rain	Evap.	Air Temp	Soil Temp		Long term average rain
Jan	227.0	3.0	4.0	5.5		130.8
Feb	106.2	15.5	3.1	4.6		94.8
Mar	54.6	27.1	6.1	4.6		97.7
Apr	102.4	47.6	8.8	7.7		69.7
May	38.4	88.2	13.1	13.1		70.0
Jun	43.2	102.4	16.1	15.4		70.1
Jul	43.0	87.2	16.1	16.4		69.3
Aug	98.1	46.2	14.5	14.7		83.6
Sep	61.6	39.3	11.9	12.5		94.9
Oct	53.2	29.6	10.2	10.7		132.2
Nov	88.4	15.7	7.9	8.4		124.5
Dec	201.0	11.5	8.1	6.6		123.9
	1117.1	513.3	10.0	10.0		1161.5

Doonbeg						
	Rain	Evap.	Air Temp	Soil Temp		Long term average rain
Jan	156.7	13.7	6.6	5.8		124.9
Feb	86.5	20.9	4.5	3.4		87.2
Mar	66.0	33.9	5.2	4.2		89.9
Apr	80.6	49.7	9.1	8.6		63.7
May	53.2	71.9	12.3	11.3		73.5
Jun	10.4	87.8	15.8	14.2		76.3
Jul	65.4	79.9	16.2	15.4		79.2
Aug	89.8	58.0	15.1	15.1		98.0
Sep	81.8	45.7	12.5	13.6		101.0
Oct	65.0	36.5	10.5	11.0		131.5
Nov	114.2	18.5	8.1	8.9		127.2
Dec	183.4	11.3	8.8	7.8		132.7
	1053.0	527.9	10.4	9.9		1185.1

Rossmore						
	Rain	Evap.	Air Temp	Soil Temp		Long term average rain
Jan	242.8	12.8	5.4	5.0		99.2
Feb	64.2	21.7	3.4	4.0		75.4
Mar	80.8	31.0	4.5	4.1		79.3
Apr	102.1	48.3	9.0	8.7		57.7
May	43.4	71.5	12.3	13.5		66.8
Jun	72.0	87.9	16.2	16.7		71.1
Jul	41.8	89.4	17.0	17.5		64.1
Aug	45.8	58.1	15.0	15.8		82.7
Sep	81.2	45.4	11.8	13.0		77.7
Oct	59.8	32.3	9.4	10.6		112.2
Nov	116.8	12.7	7.3	8.1		95.5
Dec	178.2	8.7	7.6	7.6		100.1
	1128.9	519.7	9.9	10.4		981.8

Ballinagree						
	Rain	Evap.	Air Temp	Soil Temp		Long term average Rain
Jan	231.2	11.9	5.1	5.8		199.5
Feb	91.2	18.8	2.9	4.5		154.1
Mar	144.2	24.0	3.3	4.1		151.2
Apr	183.0	33.4	7.3	7.0		113.6
May	85.4	59.6	10.9	9.2		114.8
Jun	33.8	86.3	15.1	12.5		98.2
Jul	60.4	81.2	15.7	13.9		106.2
Aug	49.0	51.3	13.6	13.3		119.7
Sep	94.2	40.1	11.0	11.9		132.9
Oct	96.0	29.0	8.6	10.1		197.3
Nov	219.4	10.3	6.7	8.3		183.1
Dec	281.6	6.6	7.3	8.0		186.1
	1569.4	452.4	9.0	9.0		1756.7

Lisselton						
	Rain	Evap.	Air Temp	Soil Temp		Long term average Rain
Jan	180.6	16.9	6.7	6.4		117.5
Feb	89.8	22.3	4.4	5.2		85.8
Mar	53.2	31.3	4.6	5.5		85.9
Apr	84.8	46.1	9.0	9.6		64.8
May	74.4	67.6	12.3	12.4		66.0
Jun	15.2	83.3	16.1	14.6		69.6
Jul	38.6	77.7	16.3	15.2		70.2
Aug	71.4	54.4	15.2	14.4		86.2
Sep	97.2	43.5	12.3	12.7		88.5
Oct	60.4	32.7	10.0	10.6		120.8
Nov	108.4	17.0	8.0	8.2		118.0
Dec	131.0	7.8	8.4	8.1		122.0
	1005.0	500.6	10.3	10.2		1095.3

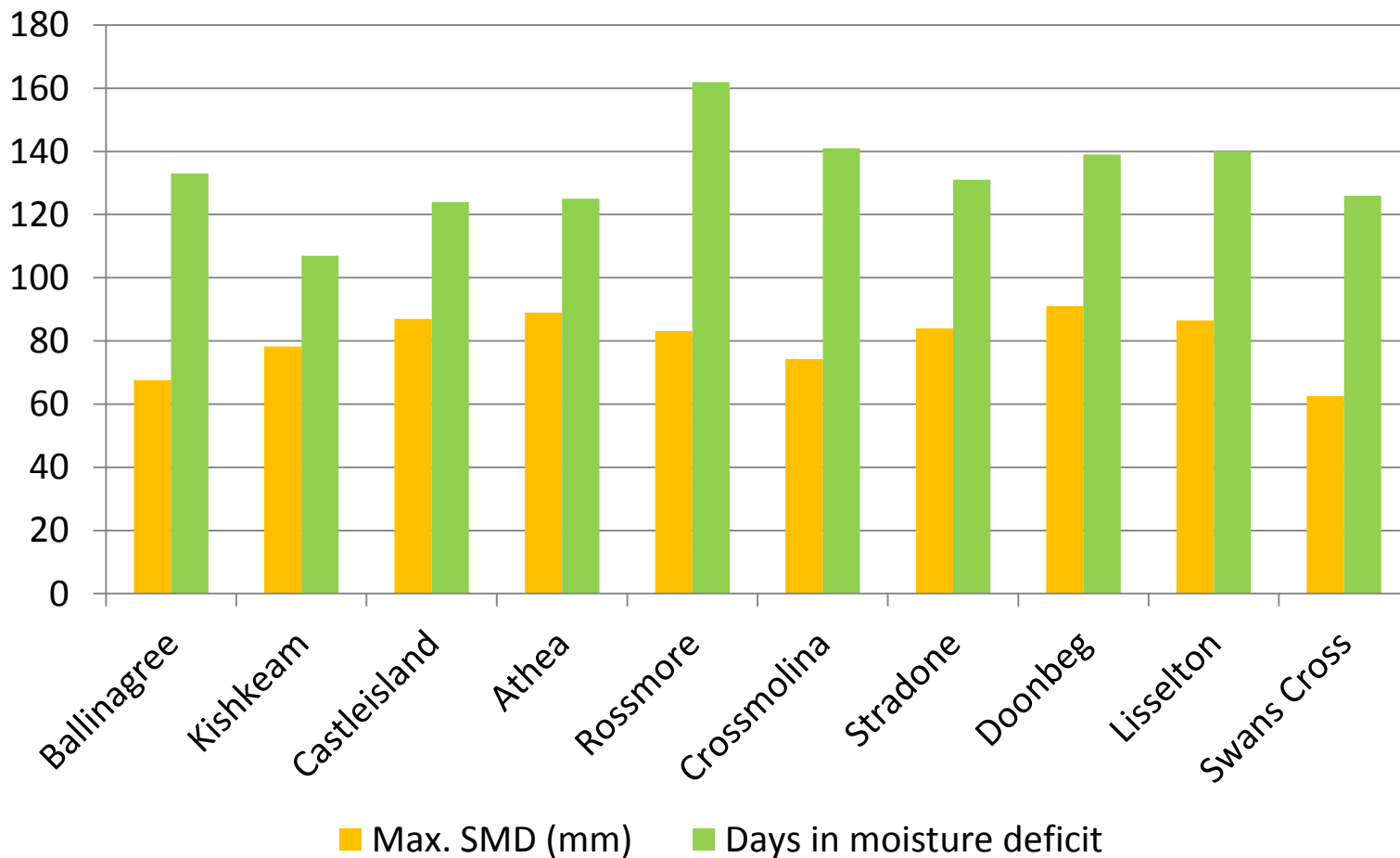
Kishkeam						
	Rain	Evap.	Air Temp	Soil Temp		Long term average Rain
Jan	327.2	10.1	4.7	5.1		185.0
Feb	105.8	18.3	2.6	3.6		138.5
Mar	122.8	26.7	3.2	3.8		136.9
Apr	144.6	37.8	7.1	7.8		101.0
May	71.4	81.9	12.0	10.5		93.4
Jun	44.8	101.7	15.7	13.4		95.3
Jul	53.4	104.3	16.2	15.2		98.8
Aug	86.6	53.4	14.2	14.8		117.9
Sep	100.0	41.8	11.6	12.4		118.2
Oct	86.6	30.6	9.2	9.9		179.4
Nov	98.4	13.8	7.3	7.3		174.6
Dec	162.6	10.6	7.9	7.3		182.5
	1404.2	531.1	9.3	9.3		1621.5

Castleisland						
	Rain	Evap.	Air Temp	Soil Temp		Long term average Rain
Jan	259.2	15.7	6.6	6.5		142.0
Feb	96.2	22.5	4.2	5.1		108.1
Mar	95.6	30.6	4.5	5.1		103.9
Apr	112.8	44.8	8.9	9.2		80.0
May	75.0	70.6	12.5	12.9		78.5
Jun	19.4	85.3	16.2	16.4		78.9
Jul	64.2	81.2	16.6	17.2		81.7
Aug	85.6	54.3	15.0	15.9		100.6
Sep	100.6	44.0	12.4	13.9		100.0
Oct	82.0	35.2	10.0	11.5		146.5
Nov	139.2	18.2	8.3	8.8		135.8
Dec	209.4	11.5	9.0	8.6		141.6
	1339.2	514.0	10.3	10.9		1297.6

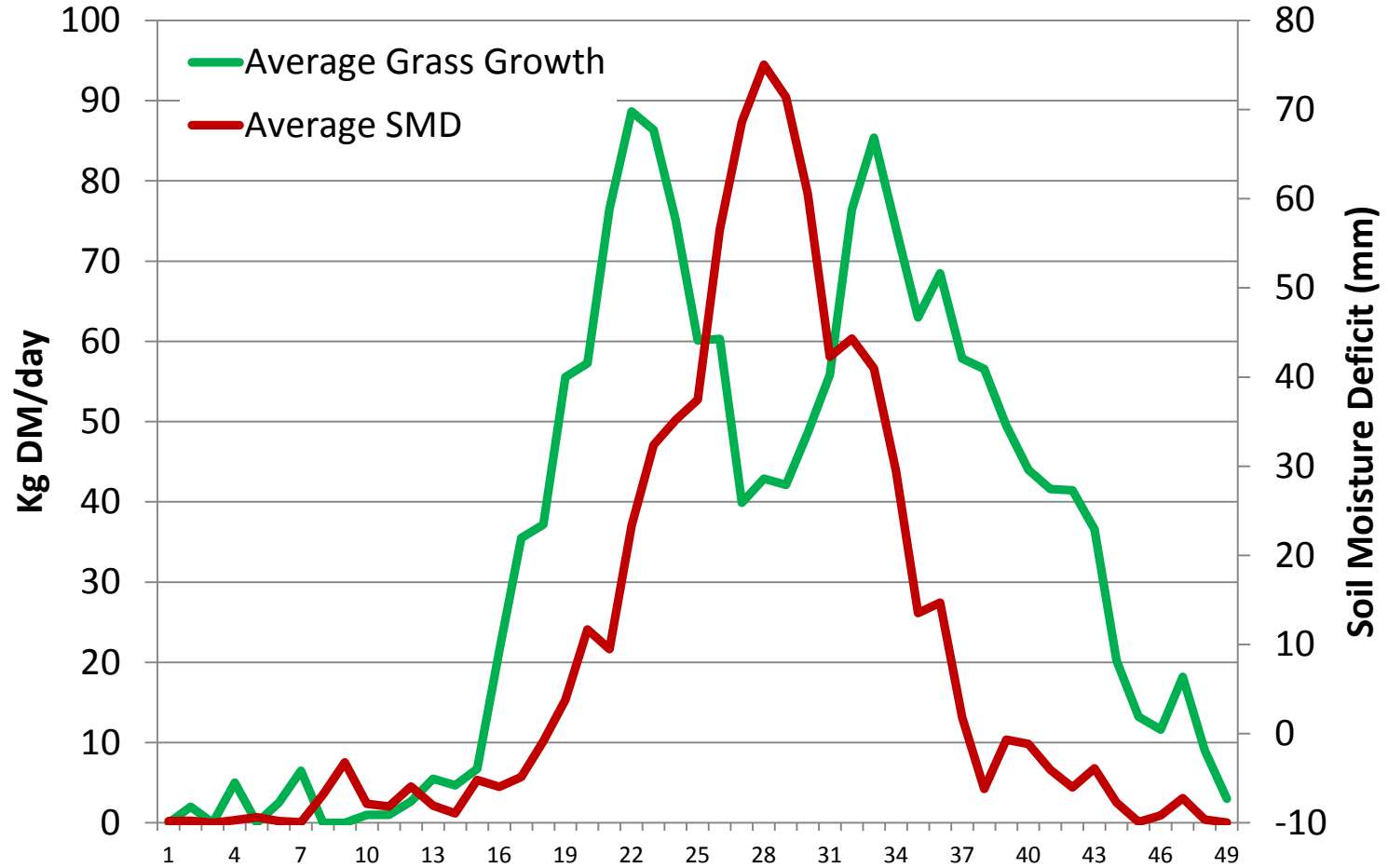
Stradone						
						Long term average Rain
	Rain	Evap.	Air Temp	Soil Temp		
Jan	175.4	8.9	3.8	4.1		106.2
Feb	71.6	17.6	2.5	3.2		74.9
Mar	87.6	26.7	3.6	3.8		87.2
Apr	74.4	40.8	7.7	7.8		73.1
May	53.8	71.2	11.8	12.0		78.7
Jun	40.6	89.9	15.6	16.1		80.4
Jul	84.4	79.9	16.0	17.0		81.2
Aug	122.2	53.8	14.0	15.3		99.6
Sep	53.2	39.8	10.9	12.6		83.0
Oct	54.6	27.3	8.7	9.8		115.5
Nov	124.4	11.2	6.8	6.9		104.5
Dec	118.0	5.9	6.4	6.1		109.0
	1060.2	473.0	9.0	9.6		1093.3

Swans Cross						
						Long term average Rain
	Rain	Evap.	Air Temp	Soil Temp		
Jan	119.6	9.0	4.0	4.6		103.8
Feb	76.6	17.6	2.7	3.7		76.0
Mar	58.4	27.6	3.8	3.9		89.5
Apr	66.2	41.6	8.0	7.5		71.3
May	58.4	68.3	12.1	10.8		72.4
Jun	89.4	83.1	15.7	14.8		78.2
Jul	73.2	76.6	16.2	16.5		84.4
Aug	112.5	54.9	14.4	15.5		102.6
Sep	55.0	40.2	11.3	12.8		82.0
Oct	38.4	26.7	9.1	10.2		111.7
Nov	133.2	12.0	7.2	7.6		102.2
Dec	100.0	6.9	6.9	6.9		104.4
	980.9	464.4	9.3	9.6		1078.5

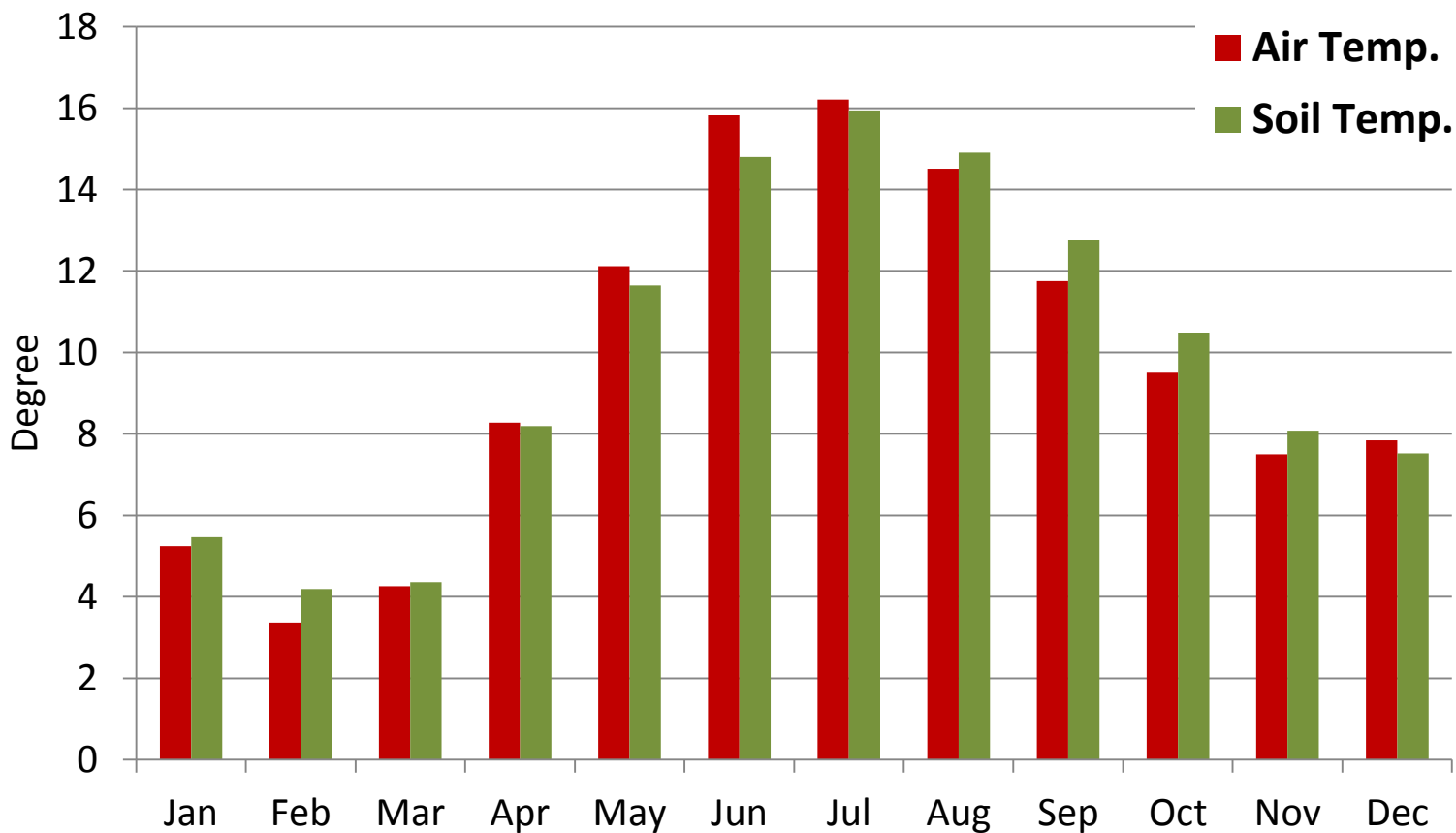
Drought Conditions



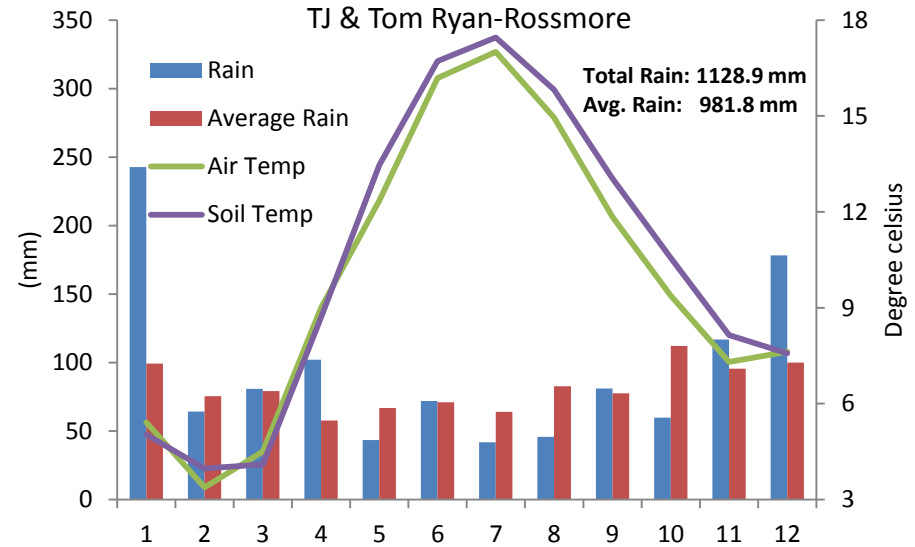
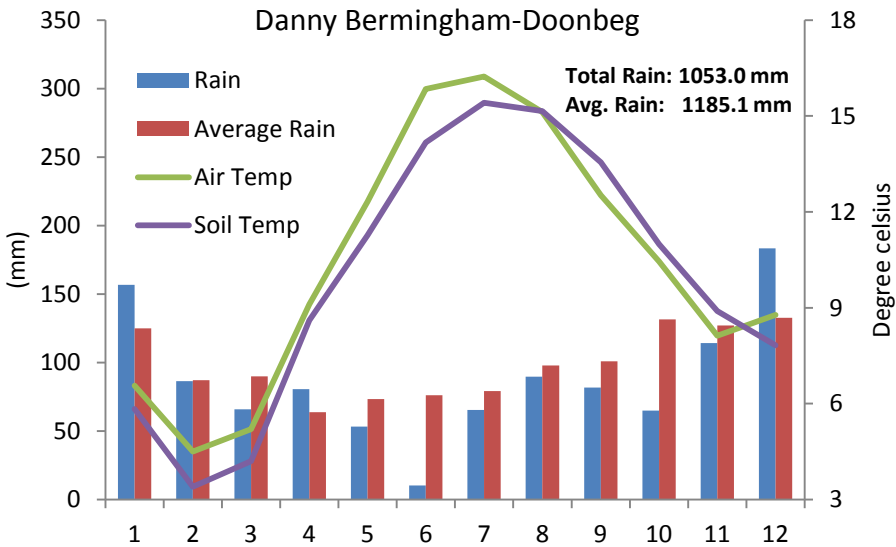
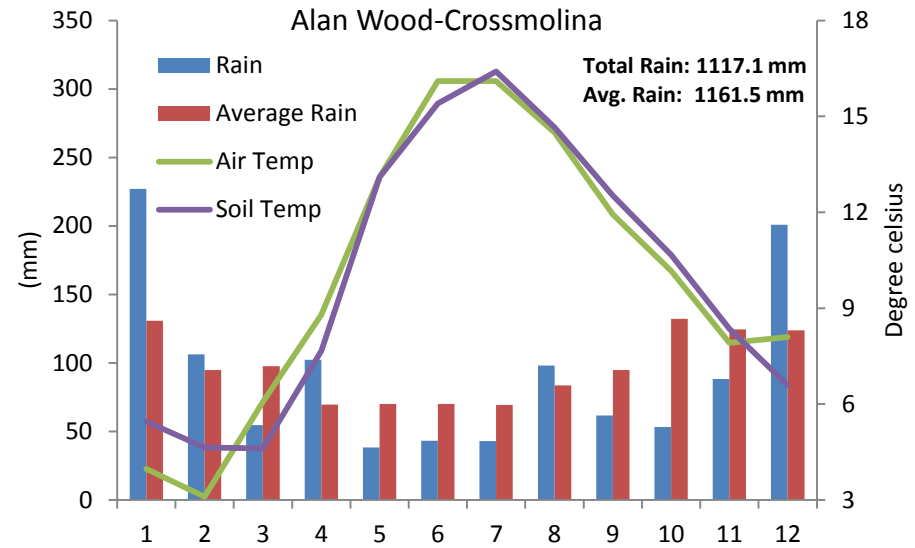
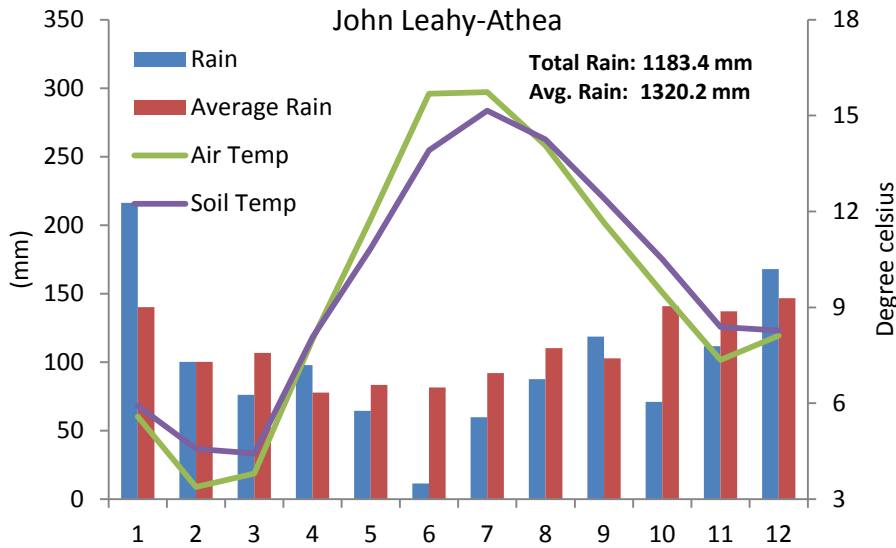
Soil Moisture Deficit



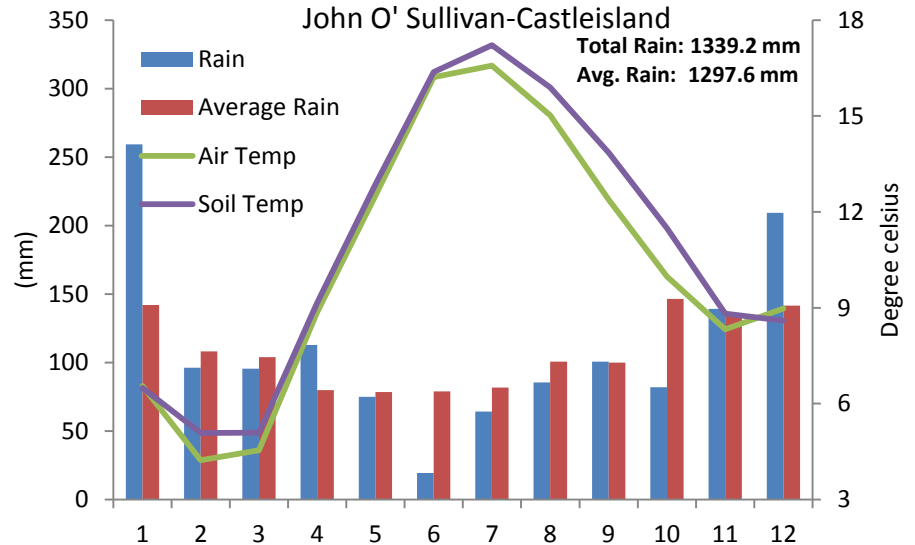
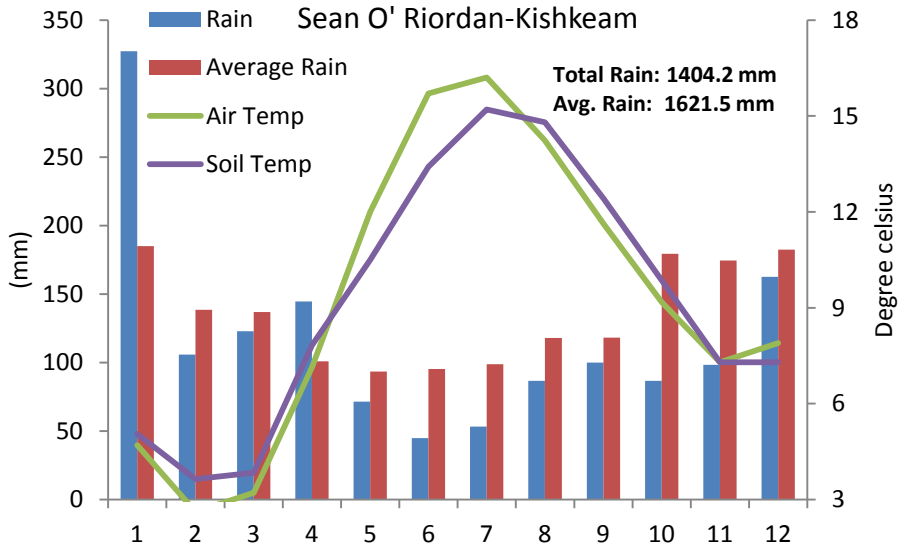
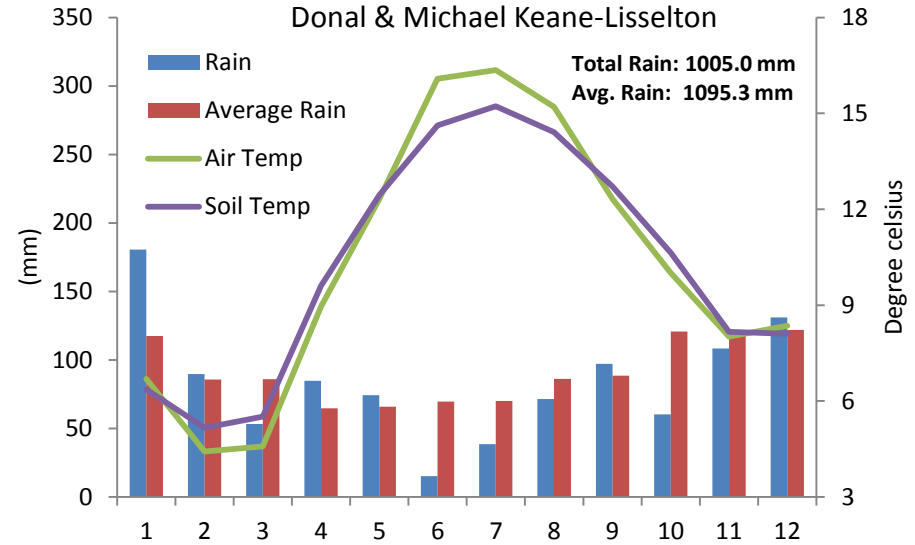
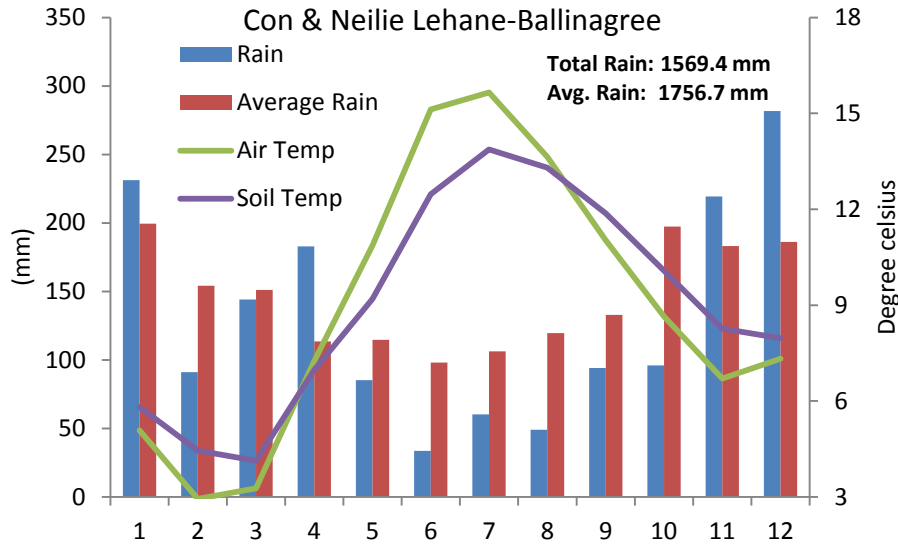
Air & Soil Temperature



2018 Weather Summaries



2018 Weather Summaries



2018 Weather Summaries

