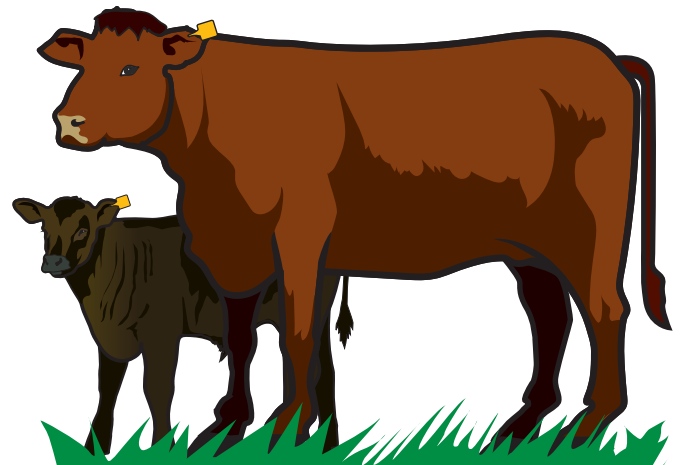


Where are you on the 12 Steps to reduce Gaseous Emissions on YOUR FARM?



Action needed

12. Incorporate clover



Include clover in all reseeded mixtures (5 kg/ha/ 2 kg/ac) and consider oversowing clover in suitable fields

11. Reduce age at slaughter by 1 month

Aim for a combination of improved beef genetics, better grassland management and better health management

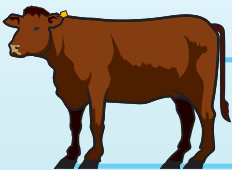


10. Produce top quality silage

Cut 1st cut silage in May to produce high quality (>72% DMD) silage

9. Increase daily liveweight gain

Weigh livestock regularly, while managing animals to meet liveweight gain targets



8. Improve calf quality

Purchase calves with the highest Commercial Beef Value (CBV) in order to optimise profitability and finishing age



7. Improve animal health

Create a herd health plan, including an annual vaccination plan, in consultation with your vet

6. Better grassland management



5. Reduce chemical N by 10kg/ha



Install paddock infrastructure, walk farm weekly and extend grazing season



4. Use 100% LESS

Apply lime, incorporate clover and make best use of slurry / FYM



3. Build or maintain soil fertility

Apply slurry in spring / early summer using Low Emission Slurry Spreading Technology (LESS)



2. Apply lime

Continue to use P & K fertilisers such as 18:6:12

1. Use protected urea



Identify fields low in pH using soil analysis and apply lime to correct deficiency

Apply protected urea instead of CAN/straight urea