

NMP Online User Update

Issue 14 | May 2019

Table of Contents

NMP Upgrade and System improvements	2
1. Plan settings	2
2. Plan Settings – General Settings guide to use	4
3. Importing Pig Slurry new Feature.....	5
4. DAFM Inspections on GLAS NMP’s.....	7
5. Soil samples and peat recommendations	8
6. All pages within NMP online	8
7. Other Items of interest.....	9
8. Appendix 1 – Clearing Browsing History in Chrome and Internet Explorer	11

NMP Upgrade and System improvements

NMP online has been a stable platform in recent months allowing derogation NMP's and records to be created, downloaded and uploaded into DAFM AgFood for derogation farmers. NMP online will be undergoing a series of improvements following stakeholder consultation over the coming months and the first of these has been included as of the date of this bulletin.

Due to recent upgrades all users are advised to clear the browsing history on the internet providers they use. Details on this are included in Appendix 1.

1. Plan settings

In accordance with Nitrates Directive SI 605/2017

- a) For the purposes of the determination of the grassland stocking rate in tables 12, 13A and 13B the previous calendar year's stocking rate data shall be used.
- b) The amount of livestock manure applied in any year to land on a holding, together with that deposited to land by livestock, shall not exceed an amount containing 170 kg of nitrogen per hectare. Where imported livestock manure is to be applied to the land on the holding, calculations shall be based on the previous calendar year's stocking rate.

NMP online has this facility to help users ensure that the as per (a) above that the allowances in the current years plan and the current year's crops and the current years N indices are based on the previous year's GSR.

- In plan settings users must select yes "Use Historic Grassland Stocking Rate" for any plans 2018 onwards
- Insert GSR from the previous year to the plan year. So if a 2019 plan than put in the GSR from 2018. The GSR is in the units of Kg N/Ha.
- The GSR is the figure of N from Grazing livestock divided by the grassland area as declared on BPS. This may have to be worked out manually. Exclude any import or exports from this figure.

Plan Settings

General Settings	Optional Settings	Units
Herd Number	A11111111	
County	Galway	
Plan Safety	No	
Limit N&P allowed to 170 Kg Level	No	
Use Historic Grassland Stocking Rate	Yes	
Insert GSR from previous year	50	
Net WFSR	50	

NMP online has this facility to help users ensure that the as per (b) above to work out the limits for imports or organic manures. Animal manures cannot be imported onto derogation farms; however non-animal manures (referred to in NMP Online as Custom Non Animal) can be imported onto all farms as long as there is “certified analysis on a fresh weight basis” available, and any available N and P replaces chemical N and P on the holding.

When users now create a new version, new copy or new plan (For 2018 onwards); there will be a warning message that will appear

Warning! Previous years stocking rates need to be used for all plans with the exception of New Derogation Applications - Go to Plan settings to enter previous years GSR figures

In addition to the bullet points above

- In plan settings users must select and complete “Nett WF SR” for any plans 2018 onwards
- Insert the “Nett WF SR” previous year to the plan year. So if a 2019 plan then put in the “Nett WF SR” from 2018. The “Nett WF SR” is in the units of Kg N/Ha.

$$\text{Net WFSR} = \frac{\text{Total N produced by animals on the farm Previous Year}}{\text{Total Area Farmed Previous Year (HA)}}$$

NB Excludes imports and Exports

- The Kg N/Ha is the figure of N/ha from All livestock over the Total farm area as declared on BPS (include bovines, ovines, equines and any pig/poultry). This may have to be worked out manually. Exclude any import or exports from this figure.
- A warning will appear where the Nett WF SR has been inserted. **Warning!** The Planned Stocking rate may not allow the amount of manure indicated to be imported in subsequent years - Plans imported relate to current year only – This warning means that as the level of import allowed needs to be calculated annually.

There are a few factors that separately can limit the import of organic manures onto farms:

- The maximum chemical N permitted on the farm. This chemical N used and the available organic N imported must be less than this figure
- The maximum chemical P permitted on the farm. This chemical P used and the available organic P imported must be less than this figure
- The 170 N/ha figure and as discussed above in point (b) this is based on the previous year’s nett WF SR and this year’s imports.

Maximum P and maximum organic N are the two most common limiting factors.

Case Study – Farm A – Mixed Tillage Grassland

- In 2018 Farm A had a Nett WF SR of 90 Kg N/H,
- For 2019 the planned WFSR in 2019 will be 120 Kg N/H. (These are based on the Farm stocking rate before any imports or exports)

The allowances for chemical N and P in 2019 are based on

- 2019 crops, areas and N and P allowances
- 2018 GSR.

	N	P Index 1	P Index 2	P Index 3	P Index 4
Max Grassland Allowance (Previous Year Grassland SR:100 kg/Ha)	206	30	20	10	0

In this example as can be seen below the previous year’s GSR as inserted in the plan settings, will appear on the Land and Fert Max page as the allowances on the 2019 NMP.

Plan Summary

Planned
Previous Year Basis

Grassland Stocking Rate (Kg/Ha):	50	100	-
Whole Farm Stocking Rate (Kg/Ha):		90	Excludes Imports and Exports in current Year
Farm Area: 45.1 Ha			
Grass Land Area: 45.1 Ha			
Non Grass %: 0			

In this example if checking for the maximum imports that can be imported in 2019 based on the 170NpH limit the NMP system will use the Nett WF SR of 90 Kg N/H from the 2018 year. DAFM have confirmed that this is the correctly methodology to do this.

i.e Maximum cattle slurry N which can be imported

$$= \frac{(170 - \text{WFSR previous year}) \times \text{Ha in current year}}{5 \text{ (Kg N/m}^3 \text{ cattle slurry)}}$$

If the 170NpH limit is exceeded these warnings will appear. The user will have to remove imports or correct the Nett WF SR (could have been inputted incorrectly); for the reports to become active. If these warnings appear than DAFM penalties can apply for exceeding 170 NpH

Warning! 170 kg N/ha whole farm stocking rate exceeded and Organic Manure Imports in plan. educe/Remove Imports to 170 kg N/ha whole farm stocking rate

Warning! 170 kg N/ha previous year Whole Farm Stocking Rate exceeded

If the P allowance is exceeded there is also a warning

2. Plan Settings – General Settings guide to use

- For any GSR in previous year <170 NpH have Plan Safety as no, Limit N&P allowed to 170Kg level as No, Use Historic Grassland Stocking Rate as yes, insert GSR from Previous year and insert Nett WF SR as Kg N/ha. and GSR
- For any GSR in previous year >170NpH and farmer not in derogation in current year then have Plan Safety as No, Limit N&P allowed to 170Kg level as Yes, Grassland Stocking Rate as Yes, insert GSR from Previous year and insert Nett WF SR as Kg N/ha.

- For approved derogation applicants in previous year and current year then have Plan Safety as no, Limit N&P allowed to 170Kg level as No, Use Historic Grassland Stocking Rate as yes, insert GSR from Previous year and insert Nett WF SR as Kg N/ha.
- For derogation applicants not approved in previous year but apply and approved for derogation in current year then have Plan Safety as no, Limit N&P allowed to 170Kg level as No, Use Historic Grassland Stocking Rate as yes, insert GSR of 220 and insert Nett WF SR as Kg N/ha.
- Approved derogation applicants in previous year but don't apply and not approved for derogation in current year then have Plan Safety as No, Limit N&P allowed to 170Kg level as Yes, Grassland Stocking Rate as Yes, insert GSR from Previous year and insert Nett WF SR as Kg N/ha.

Example	Plan Safety	Limit N&P allowed to 170Kg	Use Historic Grassland Stocking Rate	Insert GSR from Previous Kg N/ha.	Nett WF SR Kg N/ha.
GSR in previous year <170 NpH	No	No	Yes	Yes	Yes
For approved derogation applicants in previous year and current year (cannot exceed 20% Tillage)	No	No	Yes	Yes	Yes
For derogation applicants/First time derogation applicants not approved in previous year (cannot exceed 20% Tillage)	No	No	Yes	Yes	Yes
For any GSR in previous year and <5% tillage >170NpH and farmer not in derogation in current year	No	Yes	Yes	Yes	Yes
>170 and exports to below 170	No	Yes	Yes	Yes	Yes
Approved derogation applicants in previous year but don't apply and not approved for derogation in current year	No	Yes	Yes	Yes	Yes

3. Importing Pig Slurry new Feature

When plan settings have been completed correctly and users import pig slurry a new line is available in the Land and Fert Max page. This additional line is to help users explain to clients that if no chemical P is used on the holding; the maximum amount of pig slurry that could be imported.

Example Land and Fert Max page below

Simple plan 20ha's, no soil samples, P index 3, GSR in the previous year is 100 kg N/Ha, Nett WF SR in previous year is 120 Kg's N/ha.

Fertiliser Plan - Land & Fert Max					
< Prev		Next >			
	N	P Index 1	P Index 2	P Index 3	P Index 4
Max Grassland Allowance (Previous Year Grassland SR:100 kg/Ha)	206	30	20	10	0

Available N Allowance															
Name	Crop Area (Ha)	N Index 1			N Index 2			N Index 3			N Index 4			Total N	
		Area (Ha)	N Allowed	Total N	Area (Ha)	N Allowed	Total N	Area (Ha)	N Allowed	Total N	Area (Ha)	N Allowed	Total N		
Grazing	20	20	206	4,120.0											4,120.0

Available P Allowance																
Name	Crop Area (Ha)	P Index 1			P Index 2			P Index 3			P Index 4			Total P		
		Area (Ha)	P Allowed	Total P	Area (Ha)	P Allowed	Total P	Area (Ha)	P Allowed	Total P	Area (Ha)	P Allowed	Total P			
Grazing	20									20	10	200.0				200.0

P allowance	(Kgs)	
Maximum total available P	200.0	A
- Total P in Manures produced on holding (0 from Grazing from 2018)	0.0	
+ Manure P not available (Applied to index 1 & 2)	0.0	B
- Total P in manures Imported	80.0	
+ Additional P allowance for use of Pig Manure (Transitional Rule)	40.0	C
+ Total P in manures Exported (Max 83.0)	0.0	D
Total P in Concentrate Feeds Used	40.0	
Discounted P in feeds (up to 300kg)	30.0	
- Net P in concentrate feeds used	10.0	E
Maximum Chemical P fertiliser allowed	150.0	
Maximum Volume of Pig Slurry which can be imported to fully replace all chemical P on farm (m3)	287.5	F

Understanding the figures in this table is important.

- **Maximum total available P** - comes from the Table above and is directly from the Nitrates Directive available P allowances tables, based on crops, soil samples etc
- **- Total P in Manures produced on holding (0 from Grazing from 2018)** – is only relevant for 2018 plans and before this and will be zero in plans for 2019 onwards with only grazing livestock on the holding. If there is intensive enterprises on the holding for 2019 onwards there will be figures in this row.
- **+ Manure P not available (Applied to index 1 & 2)** – If organic manures (home produced or otherwise) are applied to P index 1 or 2 lands then the available P in these manures is only 50% available. As per the

Nitrates directive so there is some add back on this to provide additional P on the holding where permitted.

- **+ Total P in Manure Imported** – this is the imported P and in this example 100m³ of pig slurry has been imported (100 x 0.80Kg's P/M³) = 80kgs
- **+ Additional P allowance for use of Pig Manure (Transitional Rule)** – This is additional P permitted on the holding where pig slurry is imported (Table 22 from Nitrates Directive) this varies on the year of the plan but for this example it's a 2019 plan with 20Ha's so additional 2 Kg's/ha permitted. (If less than extra amount allowed is imported the maximum will be reduced accordingly)
- **- Net P in concentrate feeds used** – see concentrate feeds page where this is explained in more detail (Question mark help text button on Concentrate Feeds page).
- Each of these + and – are added/subtracted rated from the Maximum total available P to give the **Maximum Chemical P fertiliser allowed**. Each user should check these on plans to make sure that the **Maximum Chemical P fertiliser allowed** figures are correct

The new row of **Maximum Volume of Pig Slurry which can be imported to fully replace all chemical P on farm (m³)** only appears where pig slurry is imported. This figure will not take into account any pig slurry already imported. It could be limited by the chemical P, the chemical N or the 170 limit.

In this example above $F = ((A + B + C^* + D) - E) / 0.80\text{Kgs P per m}^3 \text{ of pig slurry}$.

$(200 + 0 + 40^* +) - 10 = 230\text{Kg's P} / 0.80 = 287.50\text{m}^3$.

* However the figure D is automatically maxed out at the Nitrates limits for the year concerned and the table below.

Date	Total available phosphorus (kg/ha)
1 January 2017	3
1 January 2018	3
1 January 2019	2
1 January 2020	1
1 January 2021	0

Users are asked to check these figures and all queries can be directed to the NMP Helpdesk.

4. DAFM Inspections on GLAS NMP's

DAFM inspections are ongoing in relation to GLAS NMP's and some of the issues raised recently by DAFM inspectors are below:-

- GLAS Area based actions (Example of LIPP and THM) which are not a designated with the appropriate crop type in the NMP

- Commonage or rough grazing crop types in GLAS must be labeled GLAS rough grazing or GLAS Commonage.
- When editing the crops types ensure that there is no organic or chemical N applied to these crop before editing the crop type. Best practice is to firstly zero the organic or chemical N applied to these crops and then edit the crop type.
- 2nd Crop is only to be used in conjunction with GLAS Catch crops.
- Soil sample areas analyzed before 01/01/2018 exceeding 8.00Ha's
- Soil sample areas analyzed after 01/01/2018 exceeding 5.00Ha's
- NMP's to be updated for the year of inspection to match the BPS nett claimed area and crops
- Submission of these GLAS NMP's via NMP online – contact the NMP Helpdesk if there are any issues in this regard.
- Submit the GLAS NMP and associated soil maps through the “Submit to DAFM Button”. May need to replicate the GLAS Soil map again in the map viewer page first. Only GLAS NMP's are to be submitted to DAFM via NMP online.

5. Soil samples and peat recommendations

Within the Nitrates Directive under Table's “Annual maximum fertiliser rates of phosphorus on grassland” the following text is included “The fertilisation rates for soils which have more than 20% organic matter shall not exceed the amounts permitted for Index 3 soils”

If a soil sample is selected to have a peat “Soil Texture” or an OM sample is available of 20.00% or more regardless of the actual P result in mg/L that the available P allowed on that crop can only be index 3 allowances. If the mg/L for the crop type is already at P index 3 reading then the available P allowance won't change. If the mg/L for the crop type is already at P index 4 reading then the available P allowance won't change.

Some users have noticed that where the peat texture or the OM% figures have been inserted that the Maximum Chemical P allowed has changed based on this so it is advised to check your NMP's with peats or where OM >20% has been inserted – see below

The screenshot shows the 'Add Soil Sample' form with the following data:

Sample Id	GAG 1234		
Sample Code			
Sample Date	20-01-2019		
Soil Texture	Peat		
P	2.3	mg/L	K
			120
			mg/L
pH	6.0	Lime Req.	3
			T/Ha
Mg		mg/L	Org. M
			21%
Has Trace Elements	No		

6. All pages within NMP online

Within NMP online there is a facility to insert notes for various users and end users. This facility is shown in the screen grab below.

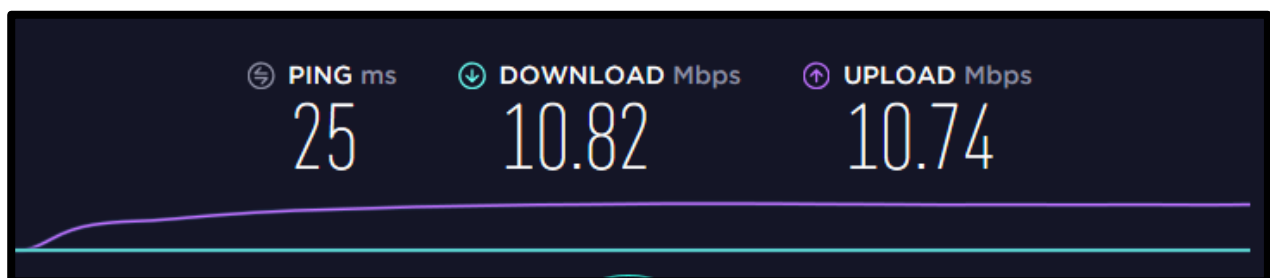
- Users can input notes by selecting the pen icon in the top right hand side of the individual green boxes.

- Advisor notes will only appear to NMP users. These will not appear on the reports.
- Farmer notes will only appear on the 2 farmer reports (Full and short reports)
- Report notes appear on all reports on the front page and should be used for any NMP's going to DAFM for compliance purposes to explain nuances in plans that allow additional N or P under the Footnotes of Tables 12 – 19 of the Nitrates Directive, or to explain nuances in plans. Text is limited in all the notes sections.
- This system upgrade now allows any of these 3 notes to be carried through into new versions or copies.

The screenshot shows a user interface with three distinct note sections. Each section is titled in a green header bar with a yellow pencil icon on the right. Below each header is a white text input area. The sections are: 'Advisor notes', 'Farmer notes', and 'Report notes'.

7. Other Items of interest

For large plans with many soil samples, plots, crop types using a browser such as Firefox (which can deal with downloading data quicker), may help with download reports. Users should test their broadband speed using <https://www.speedtest.net/> and at least have download speed of 8 and upload of 8 for the NMP system to operate efficiently. Higher broadband speeds will ensure mapping, saving, reports etc, are at a reasonable speed to ensure user satisfaction.



Some of the NMP online developments over the coming months will include the following:-

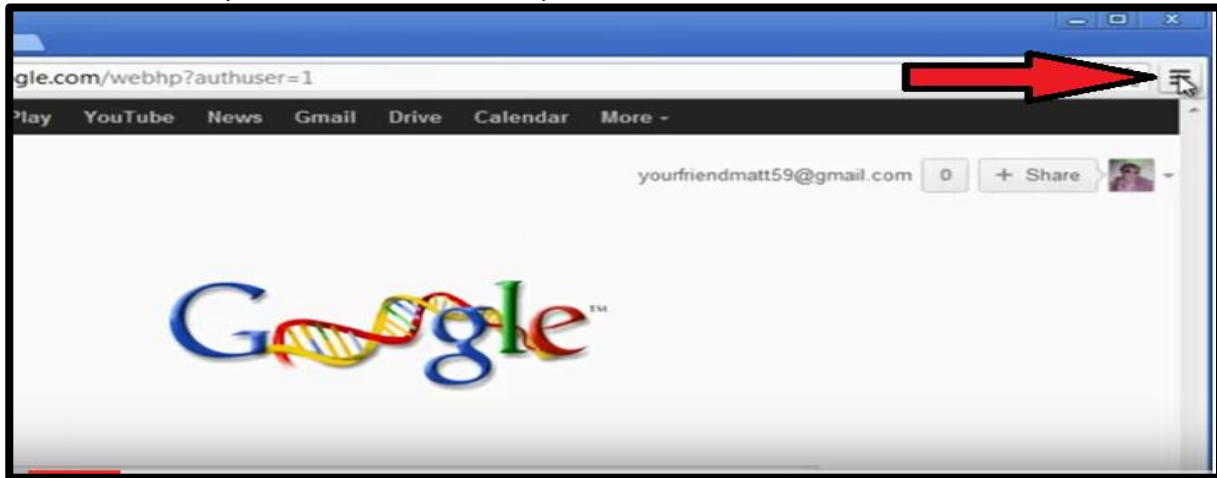
- Speed of system and user interface to be more user friendly
- Speed up the searching of clients and the subsequent downloading of plans
- Under the individual client screen that users can see the plan type, submitted plans, P buildup etc rather than having to enter each plan separately to view these details
- Soil sample report which will provide an excel list of all clients with expired or due to expire soil samples for agency admin

- Submission log for agency admin to search for submission to DAFM (expected that DAFM will allow submission of Derogation NMP's, Derogation records, soil maps and farmyard sketches from NMP online – to be confirmed)
- Soil sample page to be improved to view OM% and allow ordering and better search function where multiple soil samples
- Fertiliser and slurry pages to be more user friendly and also the ability to do a sustainable fertiliser plan, based on timing's/splits to make this more user friendly for the farmer
- Enhanced mapping functionality to allow additional linear and point features to be put on maps (roads, fences, water troughs etc).
- Ability user to select pages within reports that they wish rather than reproducing the full report
- Combination of the animal numbers and winter housing into 1 page
- Additional Help Text icons on maps pages
- Organic Matter layer to be visible on the land-setup page with additional warning for users where double cropping selected. Additional functionality within NMP online to facilitate OM NMP's.
- Colour coding of P and K indices used on maps to appear on the indices in the reports

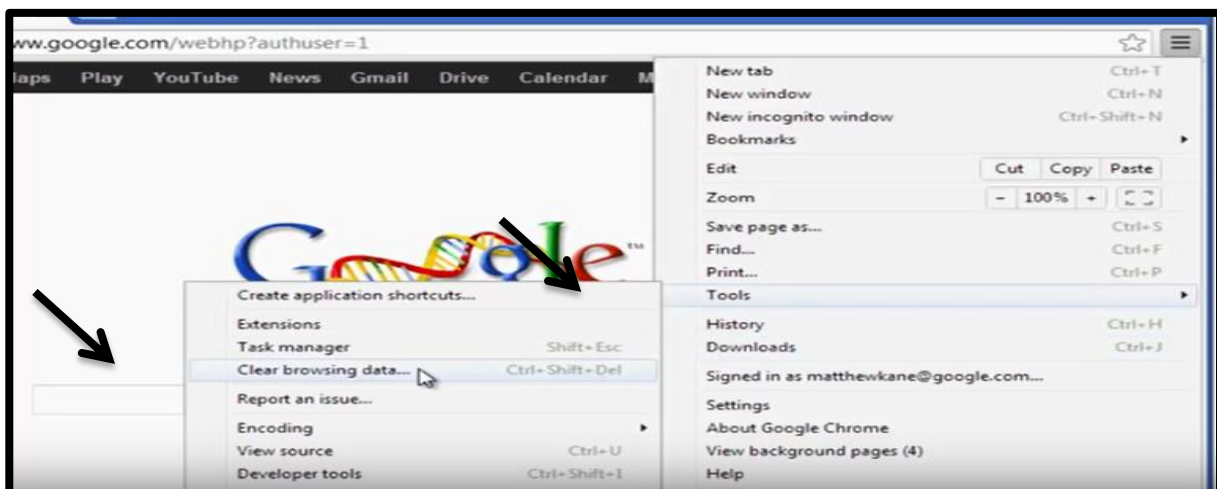
8. Appendix 1 – Clearing Browsing History in Chrome and Internet Explorer

How to Clear Cache on Chrome

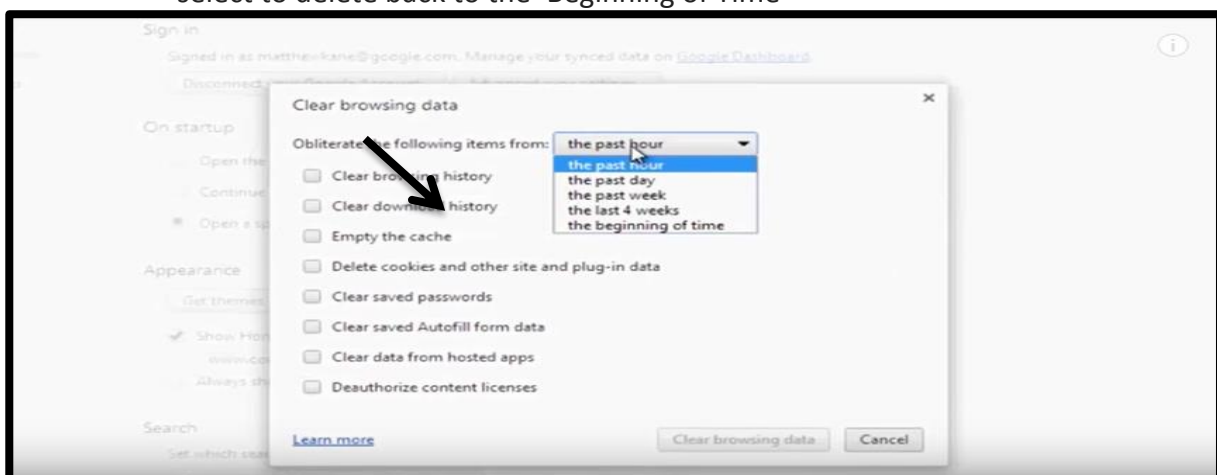
1. Open Chrome.
2. On your browser toolbar, tap More.



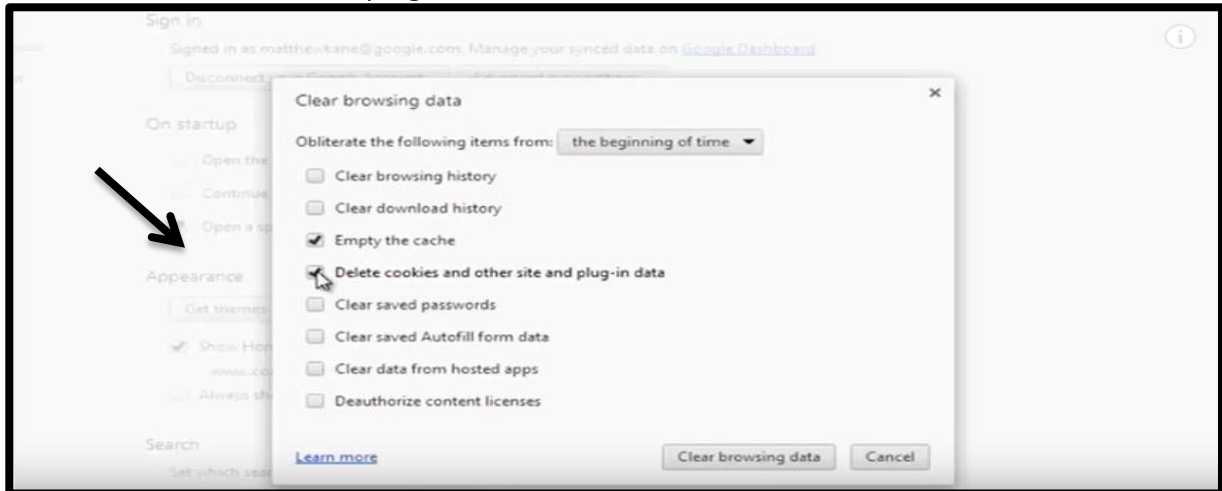
3. Mouse down to TOOLS, Select 'Clear Browsing Data'



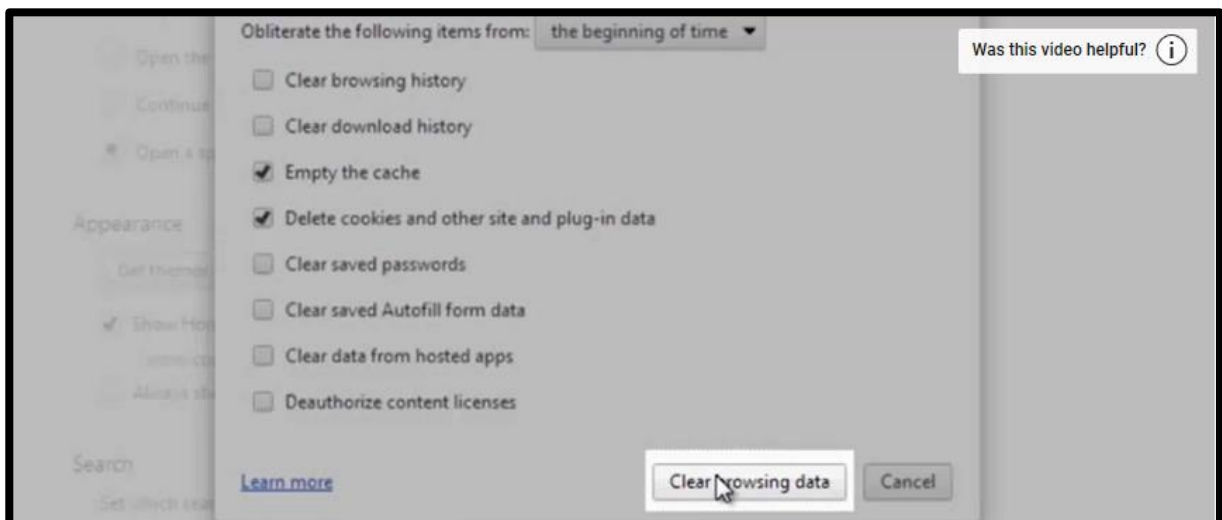
4. The Clear Browsing Data dialogue will appear in a new tab. Using the menu at the top to select to delete back to the 'Beginning of Time'



5. Ensure that the boxes are ticked beside 'Empty The Cache' as well as 'Delete cookies and other site and plug-in data'



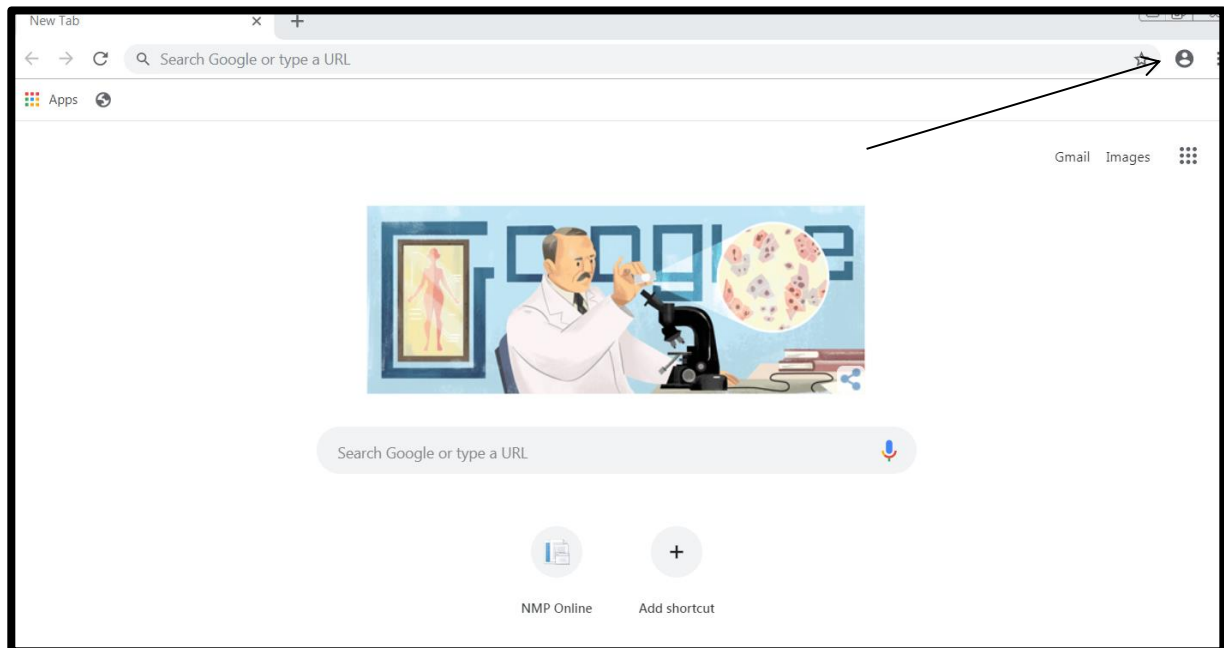
6. Tap Clear browsing data. Depending on how much needs to be deleted this may take a few minutes



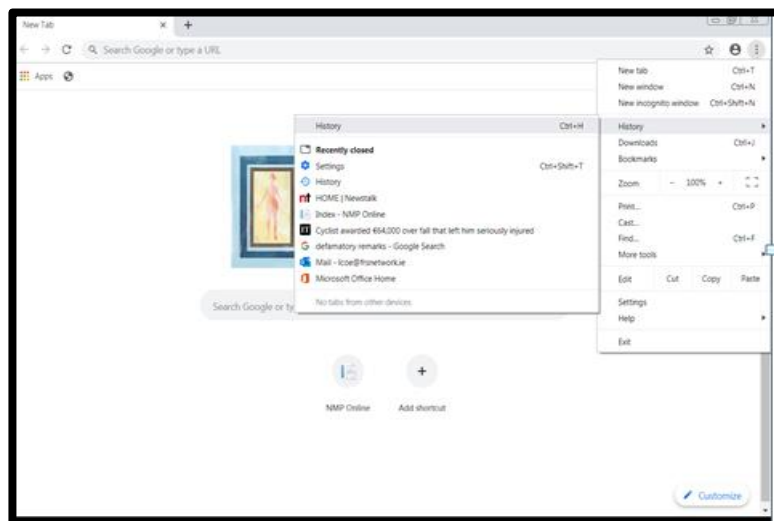
Shortcut to YouTube Video <https://www.youtube.com/watch?v=-kVSmILC28>

How to Clear Cache on Chrome

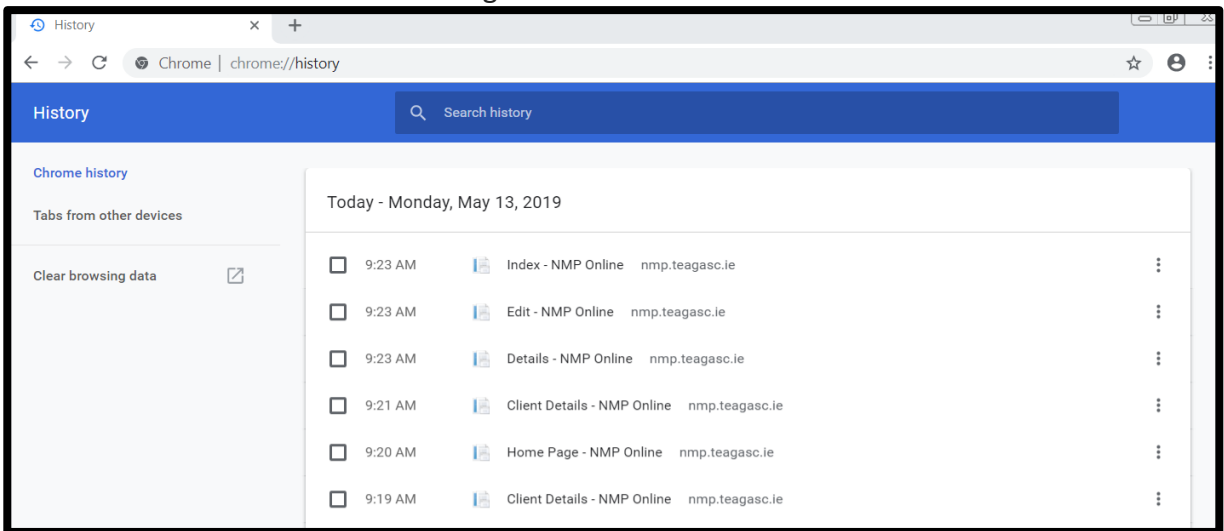
1. Open a clear Chrome search page.
2. On your browser toolbar, click the three stacked dots.



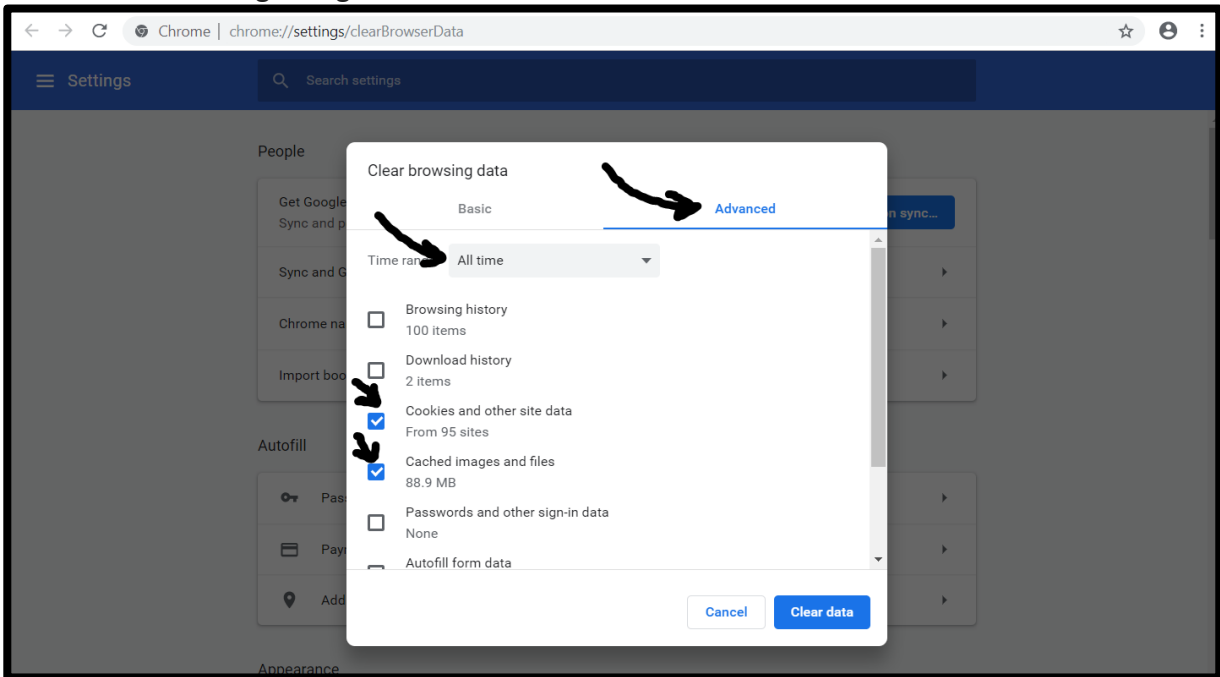
3. Scroll Mouse down to History, Select 'History and then select History in the pop up that appears



4. Select Clear Browsing data on the left hand side of the screen



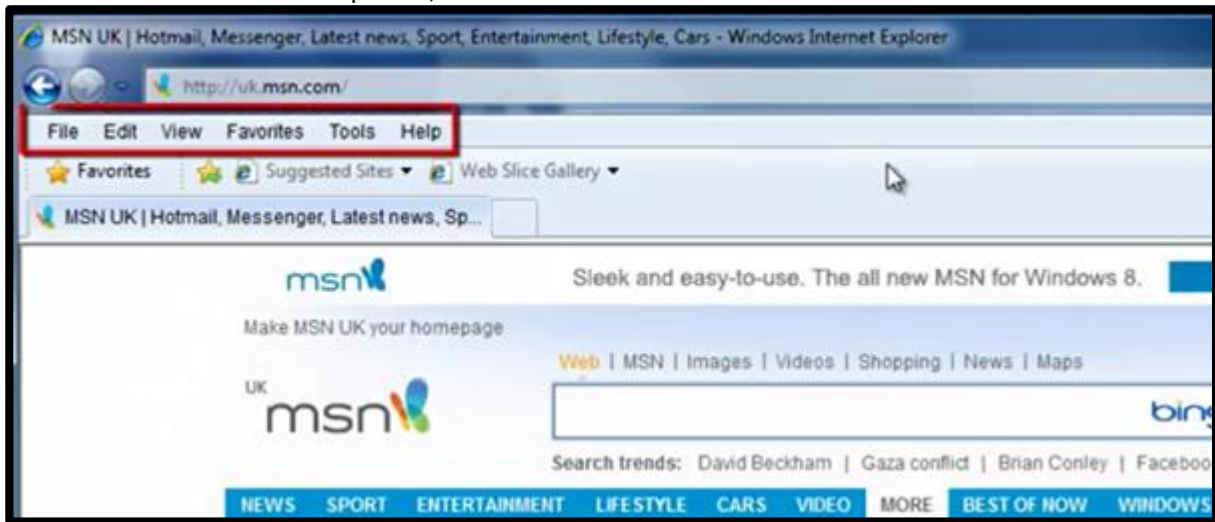
5. The Clear Browsing Data dialogue will appear in a new tab. Using the menu at the top to select to delete back to the 'Beginning of Time'



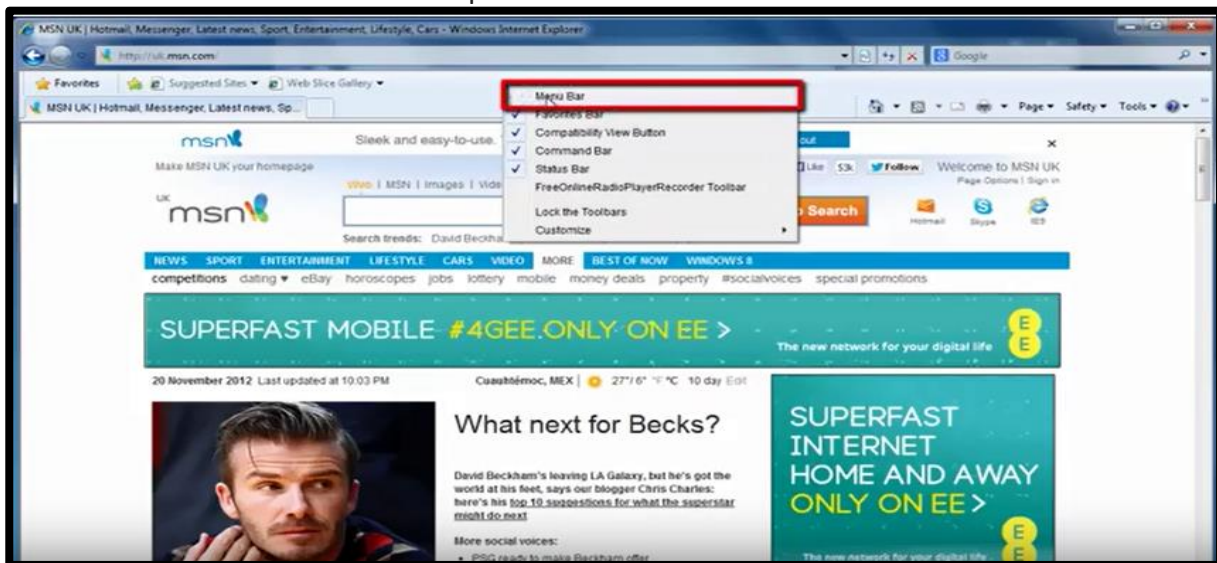
6. Tap Clear browsing data. Depending on how much needs to be deleted this may take a few minutes

How to delete history on internet explorer

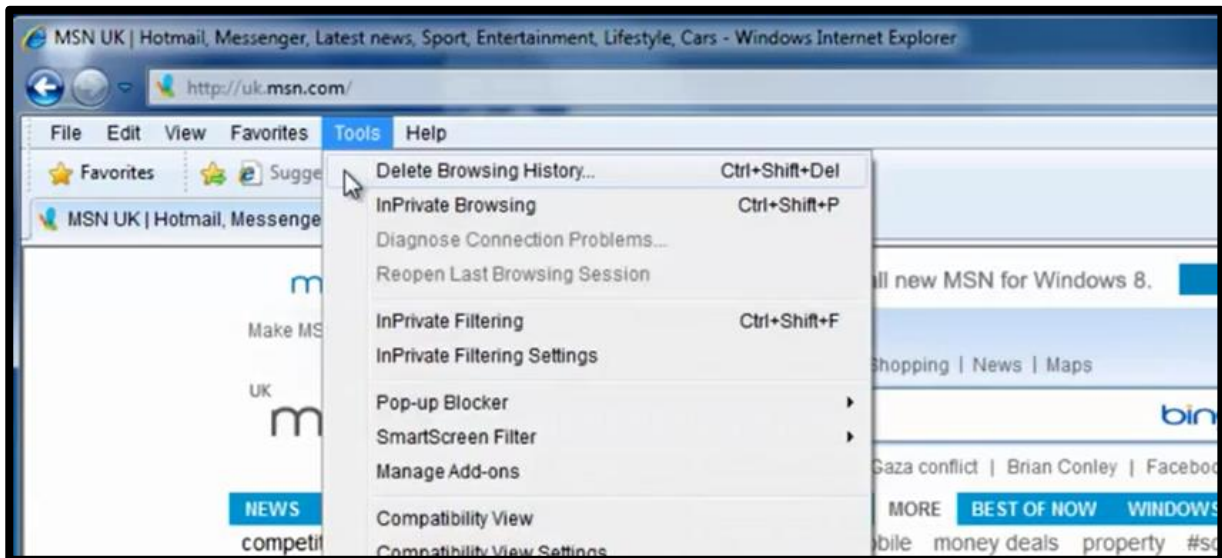
1. In Internet Explorer, select the TOOLS button from the menu bar.



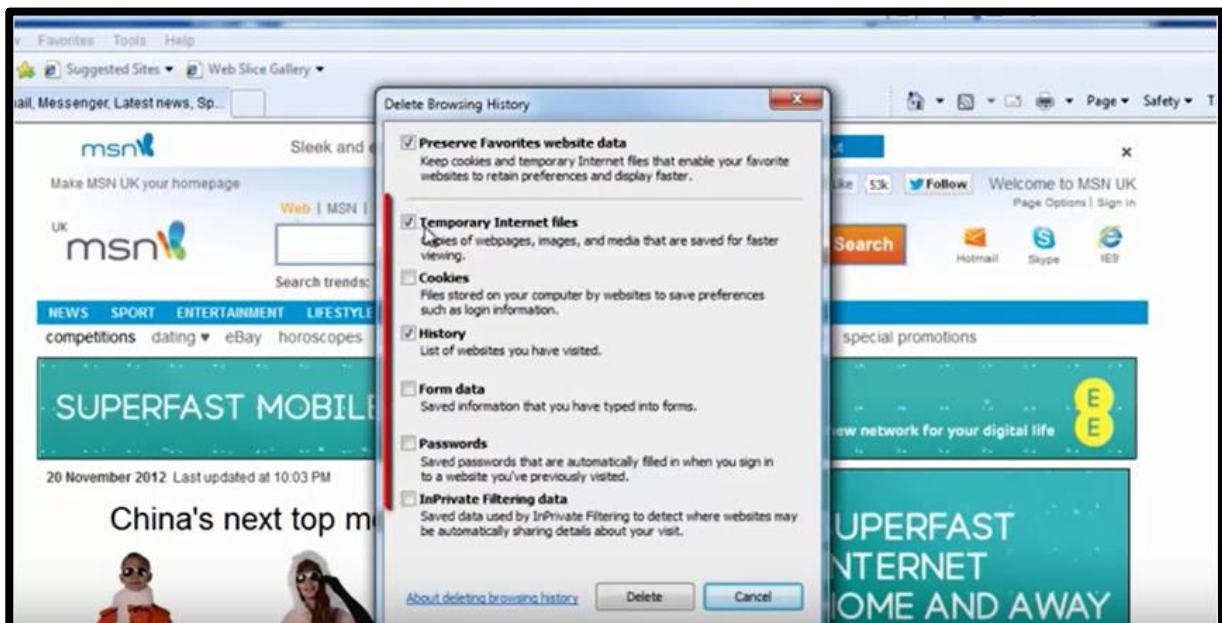
If the menu bar is not at the top Right click anywhere on the toolbar and the select the menu bar from the drop down then select 'Tools'



2. Select the Delete Browsing History,



3. Selecting Delete browsing history will bring up the window below. Then press delete at the bottom of the window to complete the process.



Web link https://www.youtube.com/watch?v=ZFZGu9jY_e4