

Challenges for pig sector

The Danish perspective

DVM

Jens Sørensen

Danvet

Biogram Jens Sørensen

- Education
 - 1994 DVM, University of Copenhagen.
 - 1999 Swine Health Certified.
- Work
 - 1994-2000 Veteriary Practice, Denmark. Main focus: Swine Practice
 - 2000-2016 Partner Odder Vet. Practice. Main focus: Swine Practice
 - 2016- Partner Danvet. Swine Practice in Denmark and abroad.



Danvet



- 17 specialized swine veterinarians Danvet
- Herds consulting in Denmark and Europe

Agenda

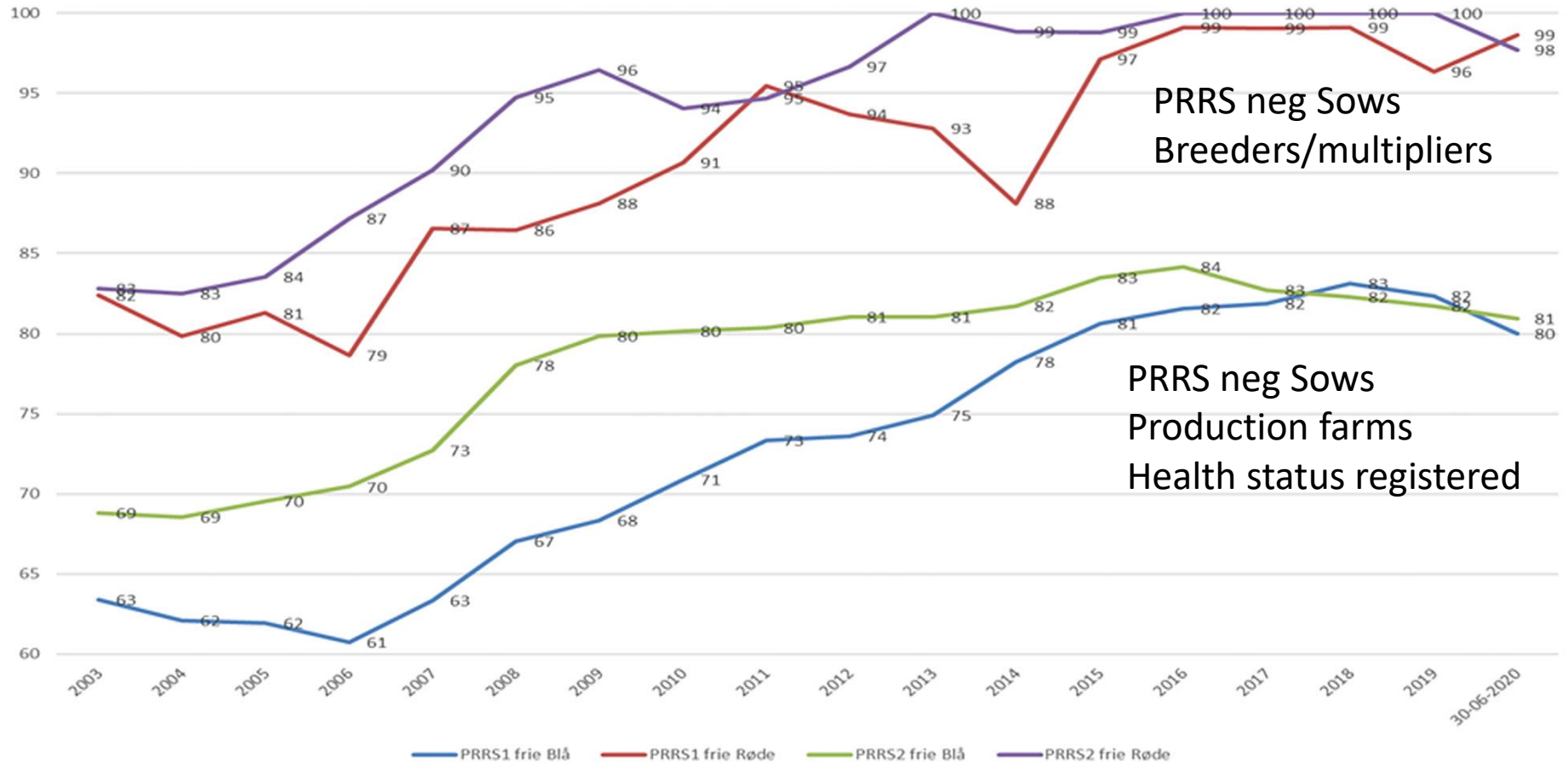
- PRRS-reduction plan
- ASF in Continental Europe
- License to produce
- Economy

PRRS reduction plan

- PRRS 2019 outbreak
- Reinfection from boar stud
- 700 sow farms recieved PRRS infected semen. 39 became infected
- Estimated financial loss: 15 mill €



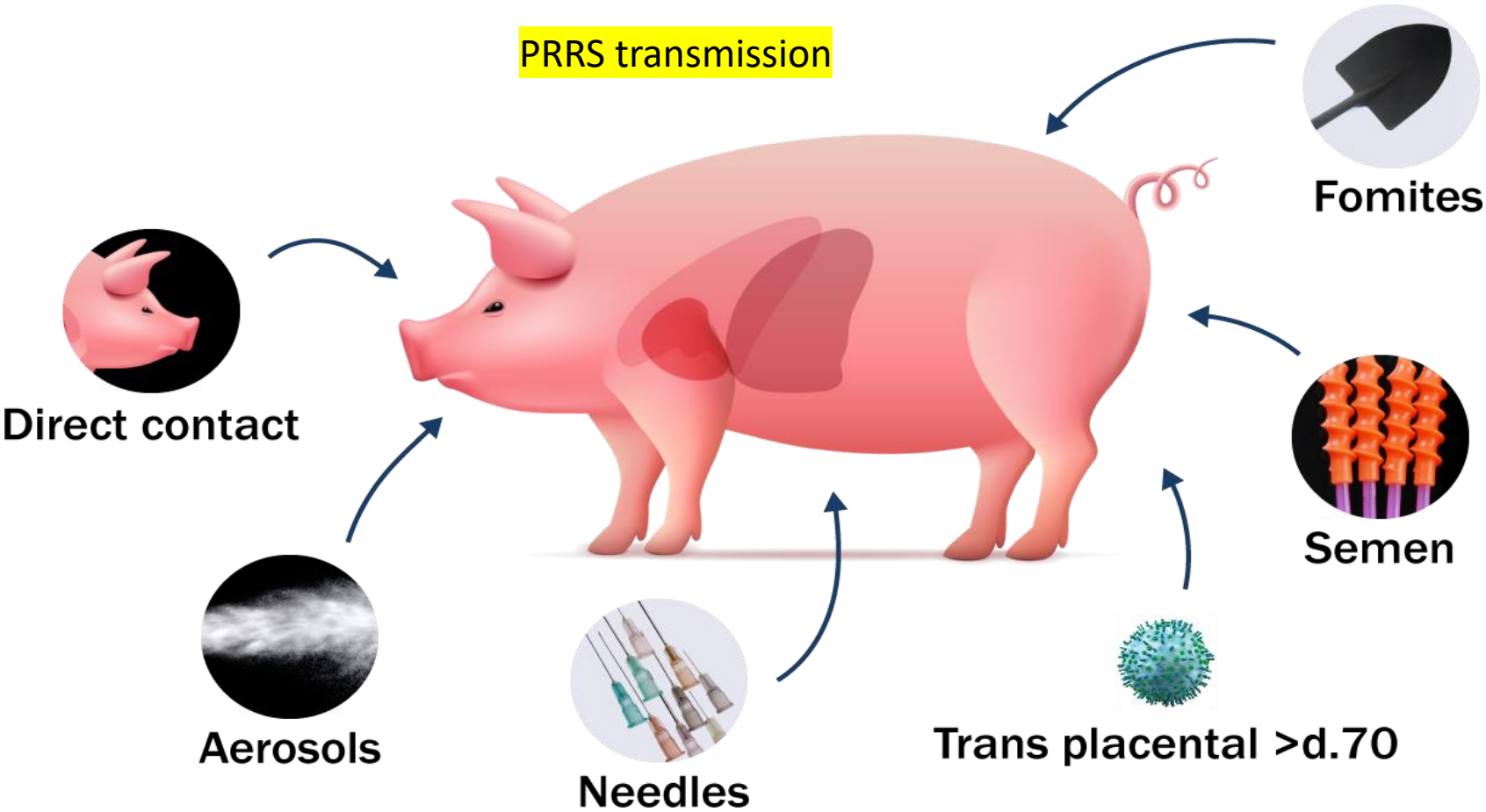
PRRS reduction plan



PRRS reduction plan

- From 2022 to 2025 all Danish herds:
 - Reduction in PRRS-positive finisher herds from 75 % to 25 %
 - Reduction in PRRS-positive sow herds from 25 % to 15 %
 - By July 2025. Meat Price reduction when PRRS-pos.

PRRS reduction plan



Figur: Claus B. Larsen, Danvet

PRRS reduction plan

How:

- All farms of unknown PRRS-status, 2022: Test.
- PRRS status on all farm by end of 2022.

PRRS reduction plan

Planning PRRS strategy in local areas.

- PRRS spread: Wind, pigs and semen
- Only PRRS-negative boar studs in Denmark
- Sow herds will go negative after LCH programme or total depopulation
- Growers/ finishers negative after depopulation

PRRS reduction plan

CHR-nummer
26408

Link til Sundhedsstatus
<https://spfsus.dk/#?herdNo=26408>

Bevætningsnummer
26408

Vej
Askgårdsvej 3

By
Ask

Postnummer
8340

Fondstræk
Malling

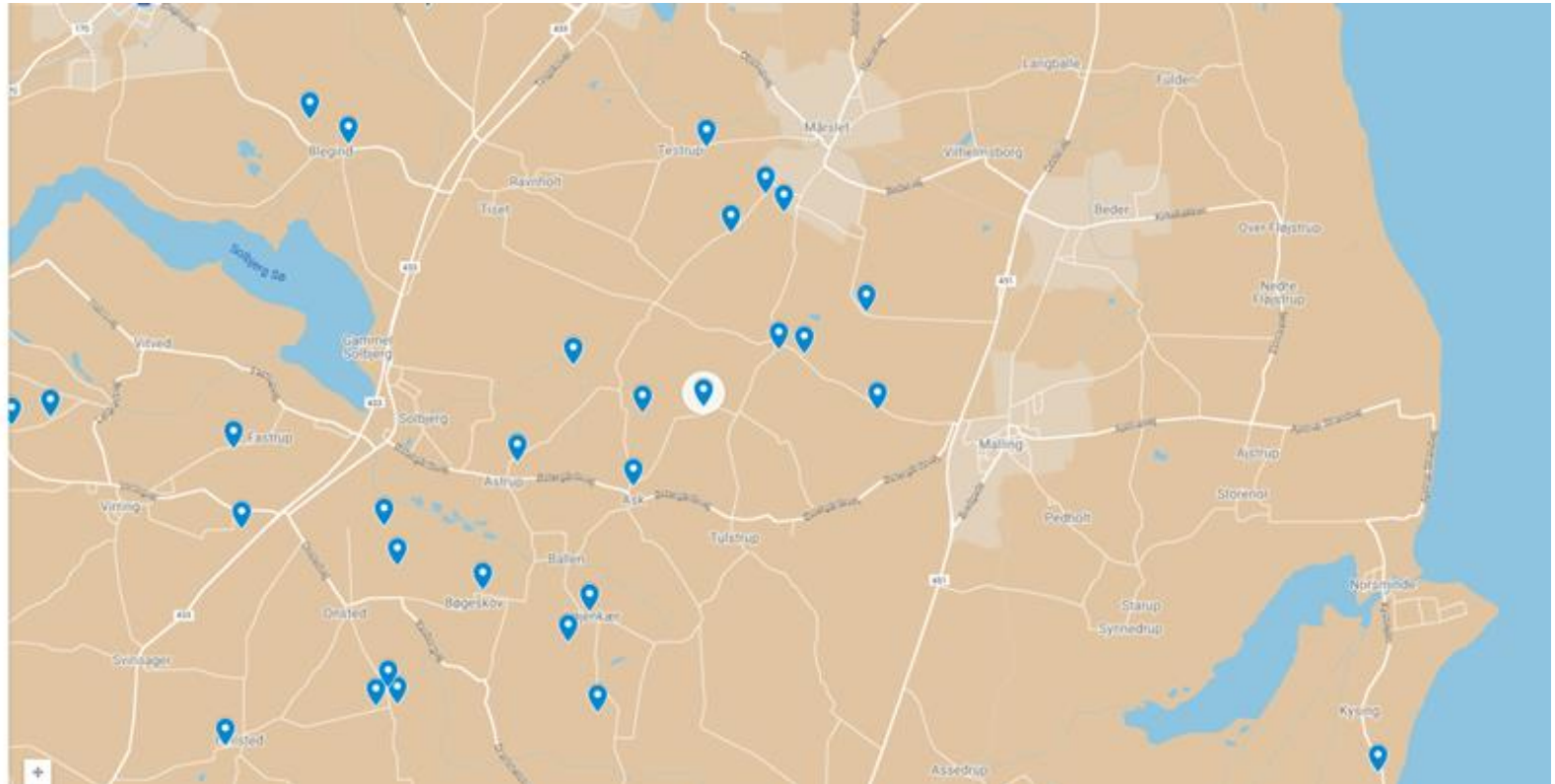
Bevætningsgruppe
Svin, produktionsbesætning

Der i alt
3800

Seer, gylle og smør i alt
1000

Slagtesvitt i alt
800

Smågris i alt
2000

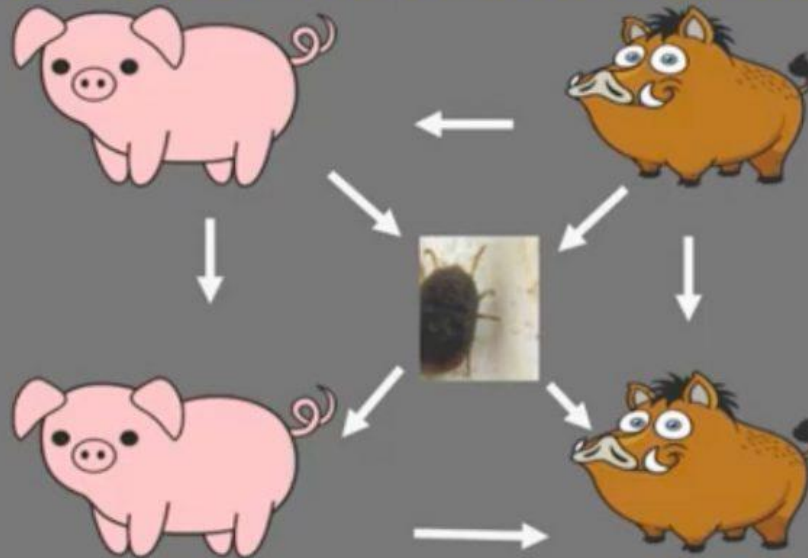


ASF in Europe

- ASF was introduced in Europe in 2014 from Russia/Belarus by wild boars
- Today in Eastern Europe, Germany and Italy
- Infected wild boars and swill feeding are main focus

ASF in Europe

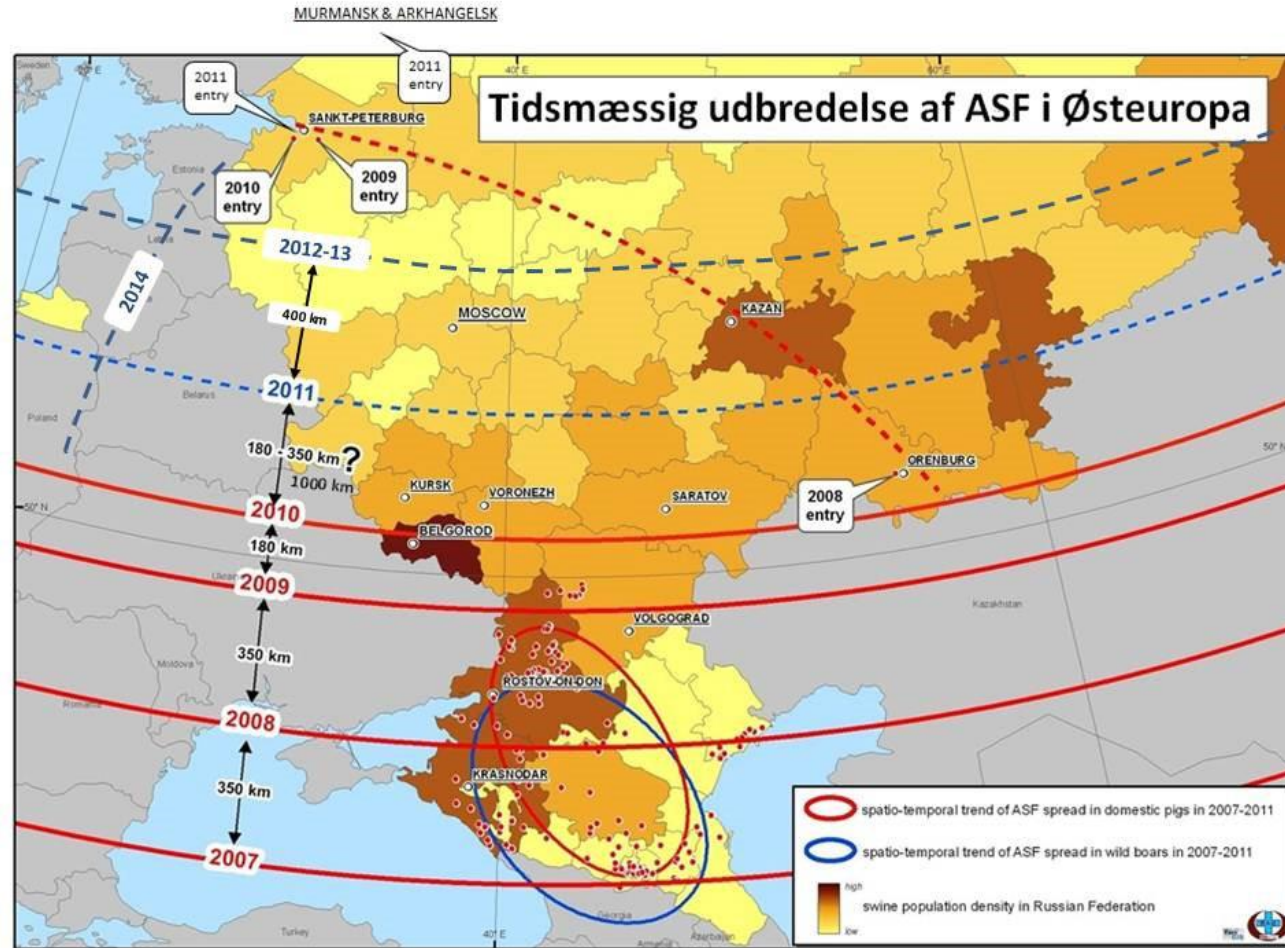
African swine fever virus : transmission



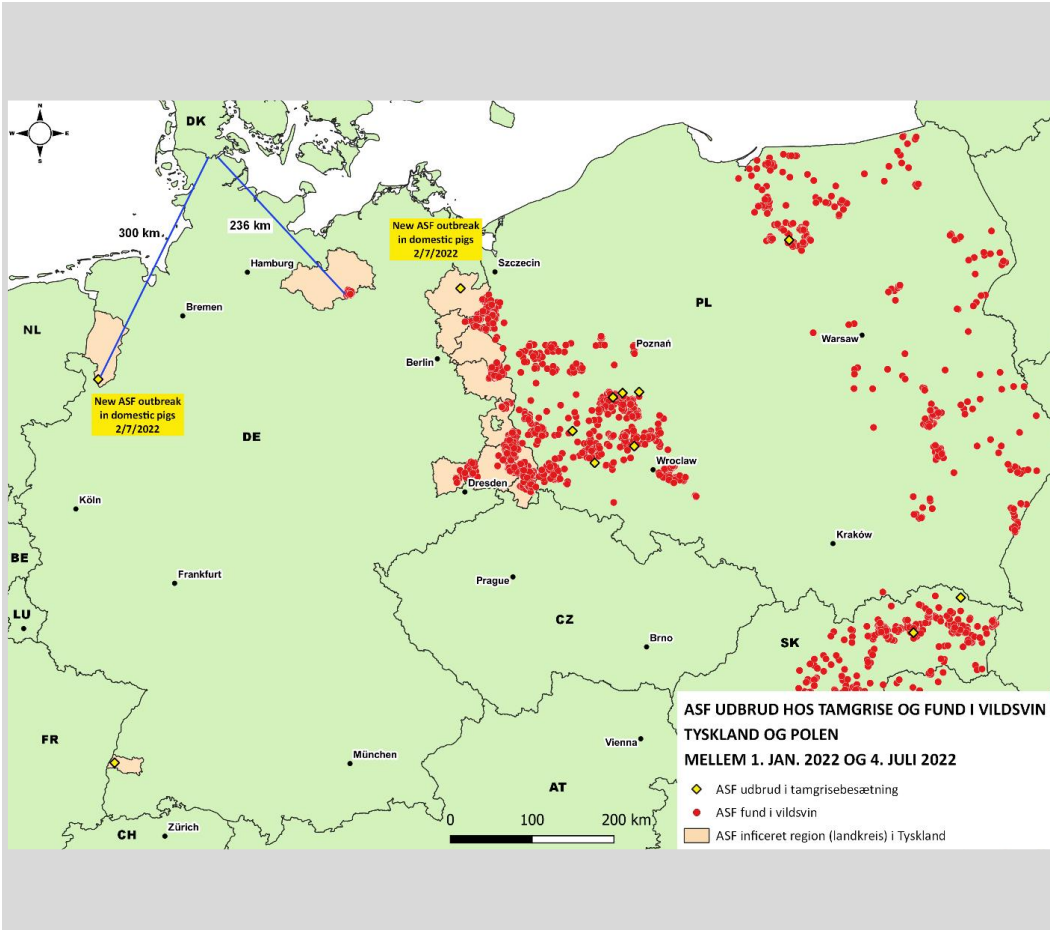
- Several days in feces
- Months in contaminated pens
- Years in frozen carcasses
- Pork products: Found over 140 days in salted/dried hams
- Feeding swill, garbage, waste

Africanswinefever.net

ASF in Europe



ASF in Europe



ASF getting closer to Denmark. Prevention:

- Avoid swill feeding.
- Truck wash.
- Wild boar extinction / fence.
- Wild boar hunting

ASF in Europe

Advarsel!
Africansk Svinepest er en meget smitsom sygdom, der siden 2014 har spredt sig gennem Europa. Det er en stor trussel for millioner af svin og vildsvin. Sygdommen er ikke farlig for mennesker, men kan smitte til svin gennem fodevarer.
SMID DERFOR ALLE DINE RESTER AF FODEVARER OG AFFALD I SKRALDESPANDENE!

Atenție!
Din anul 2014 se răspândește în Europa pesta porcină africană extrem de contagioasă care amenință milioane de porci domestici și mistreți. Prin alimente se poate transmite această boală care pentru om nu este periculoasă.
DE ACEEA VĂ RUGĂM SĂ ARUNCĂȚI RESTURILE ALIMENTARE DOAR ÎN RECIPIENTE DE GUNOI CARE POT FI ÎNCHISE!

Warning!
Highly contagious African Swine Fever has been spreading through Europe since 2014 and is now a threat for millions of domestic pigs and wild boar. This disease, which is not dangerous for humans, can be transmitted by food.
PLEASE MAKE SURE THAT ALL LEFTOVER FOOD AND WASTE IS PUT IN SEALED WASTE CONTAINERS!

Pozor!
Od roku 2014 se v Evropě rozšiřuje vysoce nakašlivý africký prasečí mor a ohrožuje milióny domácích i divokých prasat. Tato nemoc, která není pro lidi nebezpečná, se přenáší potravinami.
ODHAZUJTE PRŮTO, PROŠŤM, ZBYTKY POTRAVIN POUZE DO UZAVÍRATELNÝCH NÁDOB NA ODPADKY!

Achtung!
Seit 2014 breitet sich die hochansteckende Afrikanische Schweinepest in Europa aus und bedroht Millionen Haus- und Wildschweine. Lebensmittel können diese, für den Menschen ungefährliche, Krankheit übertragen.
BITTE WERFEN SIE DAHER SPEISERESTE NUR IN VERSCHLOSSENE MÜLLBEHÄLTER!

Uwaga!
Od roku 2014 na terenie Europy rozprzestrzenia się wysokim stopniem zakaźna choroba – afrykański pomór świni – stanowiąc zagrożenie dla milionów sztuk hodowlanej trzody chlewnej oraz pogłowia dzików. Ta niebezpieczna choroba dla człowieka może być przenoszona także przez żywność.
DLATEGO PROSIMY WYRZUCAĆ RESZTKI ŻYWNOSCI WYŁĄCZNIE DO ZAMYKANYCH POJEMNIKÓW NA ŚMIECI I ODPADY!

Miljø- og Fødevarerministeriet
Fødevarerstyrelsen

SEGES
Swineproduction

Information about ASF/illegal feeding of pigs

- Border /airport
- Rest areas at highways

ASF in Europe



Truck wash at Danish border
28000/year.

- Trucks inspected at border
- Only clean trucks allowed
- Washed and disinfected
- Certificate when leaving
- Farmers must check at farm!

ASF in Europe



Information for hunters

- From ASF infected areas:
 - No import of wild boar meat and trophies
 - Washing + disinfecting hunting gear and clothes after wild boar hunting
 - 48 hour quarantine before pig farm contact

ASF in Europe



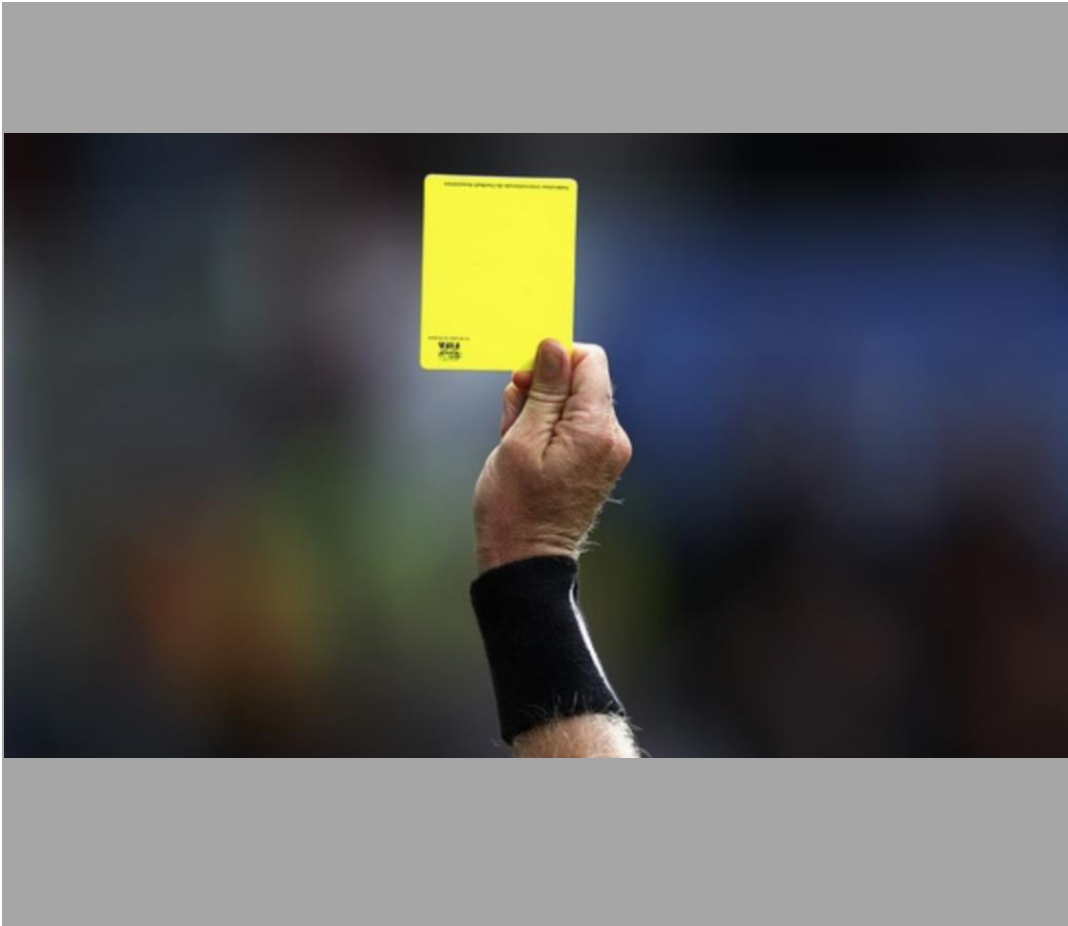
- Wild boars extinction by hunting
- Wild boar fence along 67 km land border
- Camera surveillance along border

ASF in Europe

Take home message:

- Swill feeding illegal – inform your staff
- No import of wild boar meat or trophies from ASF areas.
- Import of feed from ASF-areas a risk

License to produce



Antibiotic consumption

- Vetstat; registration number of doses (Sow/weaners/finisher)
- Since 2010, yellow card
- Limit for yellow card lowered several times

License to produce



Animal welfare

- Castration pigs
- Must use local anastetic & "pain killer" (NSAID)

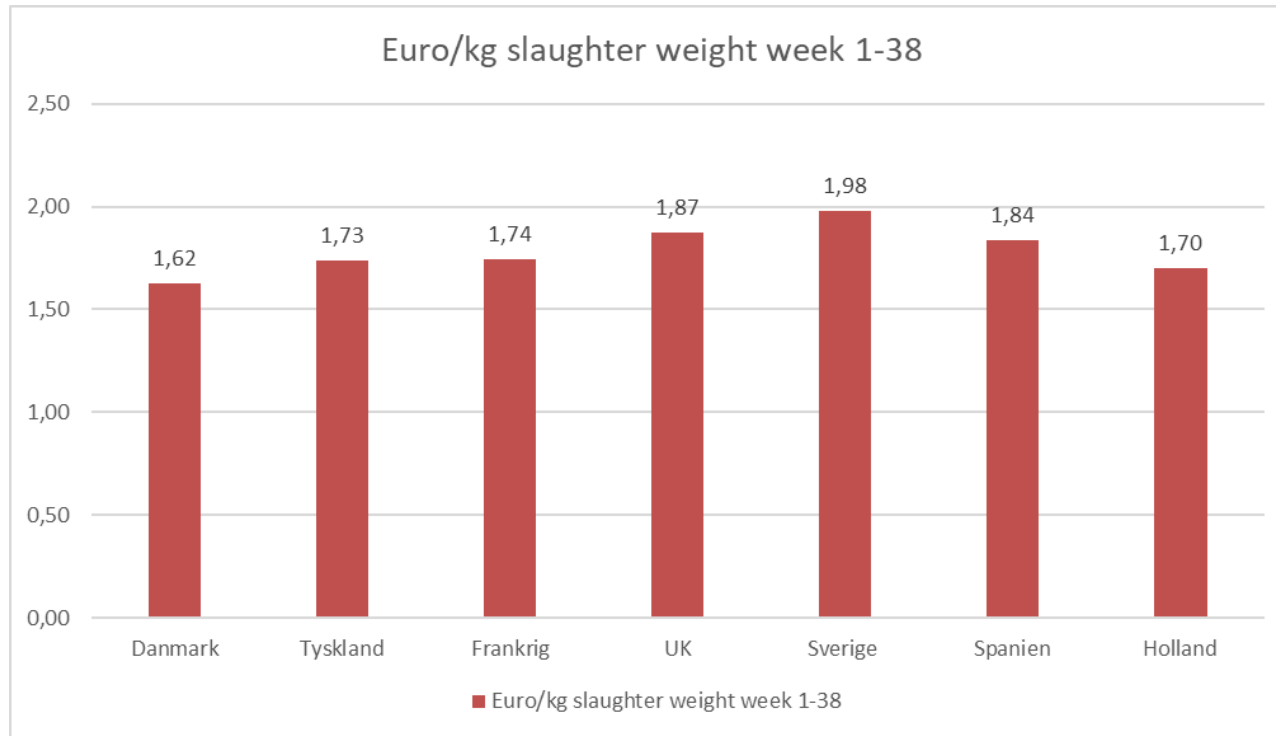
License to produce



Public focus:
Piglet mortality

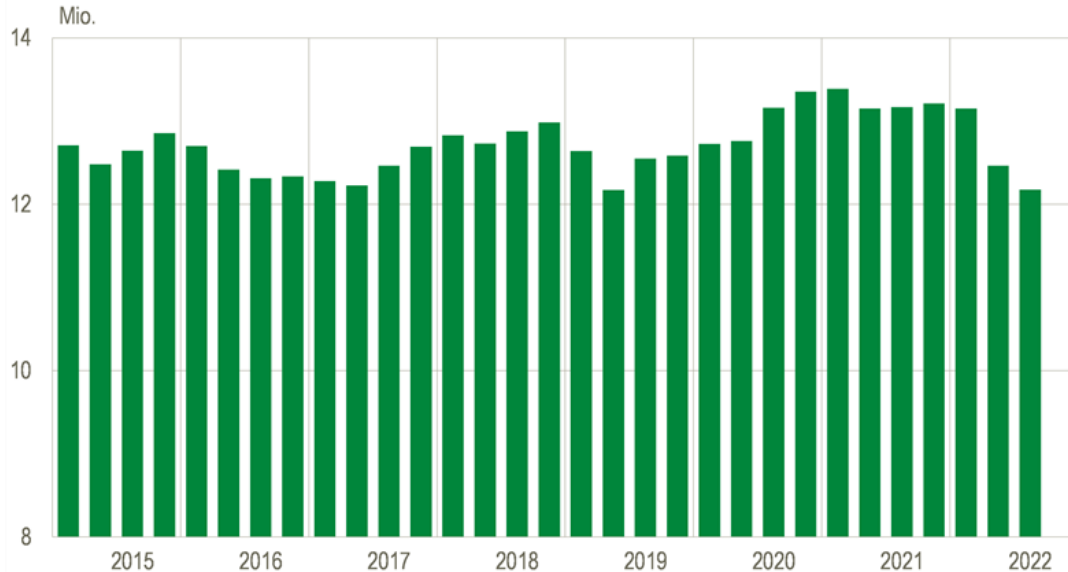
- 18 born + 2 dead born/litter
- 15 % mortality prewean
- Birth weight decreasing
- Too much genetic "succes"

Economy



Economy

Danmarks svinebestand



Anm.: Opgjort den første dag i kvartalet.

- Significant reduction total number of pigs Denmark – 8 %
- Reduction in Europe
- Significant reduction meat consumption Europe/Germany

Economy

Statement Danish production

- Danish abattoir high cost
- Export of pig meat 85 % of production
- Finisher production are capital intensive
- Sow farms more competitive than Germany/Netherlands

Economy

Expectations Danish production

- High cost for production and export of pig meat

Meat production will decline

- Sow production competitive in Northern Europe

Export of grower pigs will continue or increase

Danvet – ready for PRRS combat.



The logo features the word "danvet" in a white, lowercase, sans-serif font. The letter 'd' is stylized with a white pig silhouette integrated into its vertical stroke. The background is a solid blue color with a faint, larger-scale pig silhouette in a lighter shade of blue.

danvet

KEEPING YOUR PIGS AND BUSINESS HEALTHY