

Rural Futures Conference 2018

Adaptation to Challenges faced by Scotland's and Ireland's Rural Communities

Joint Teagasc-SRUC Conference, Norton House Hotel, Edinburgh, 12/13 March 2018

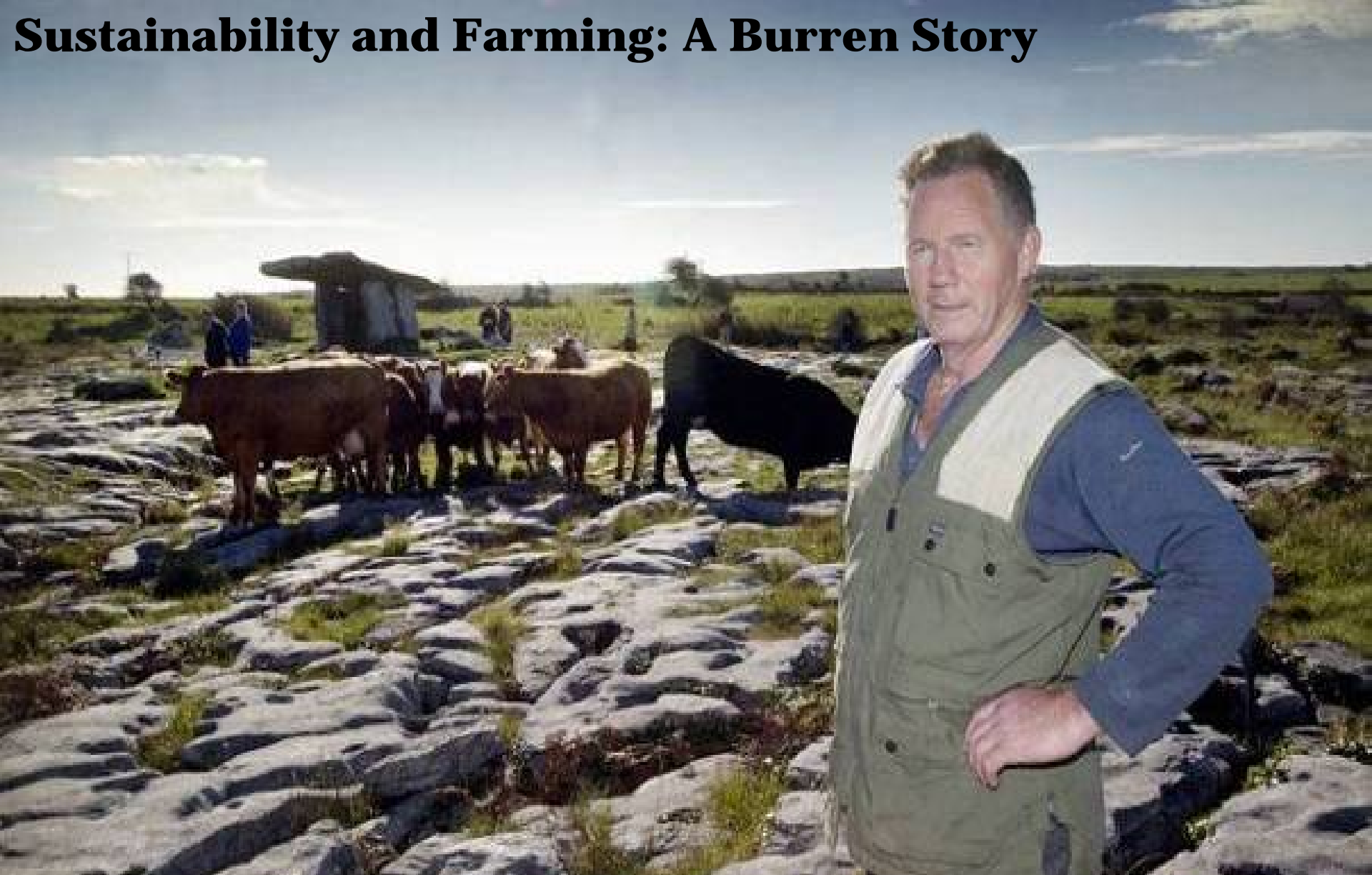
Plenary Session 2 Adapting to Change: Innovative Socio-Economic and Marketing Solutions

Dr. Brendan Dunford, Manager, The Burren Programme

Sustainable farming in a high nature value area



Sustainability and Farming: A Burren Story



Burren
PROGRAMME



The European Agricultural Fund
for Rural Development: Europe
investing in rural areas.



Department of
**Agriculture,
Food and the Marine**
An Roinn
**Talmhaíochta,
Bia agus Mara**



An Roinn Ealaíon, Oidhreachta,
Cultúir Réigiúnacha, Tuaithe agus Gaeltachta
Department of Arts, Heritage,
Regional, Rural and Gaeltacht Affairs

The Burren: A 'High Nature Value' Area



Also a 'High Cultural Value' Area



Most of all, a Farmed Landscape (for 6,000 years)

Of this barony it is said that it is a country where there is not water enough to drown a man, wood enough to hang one, nor earth enough to bury them. This last is so scarce that the inhabitants steal it from one another and yet ...

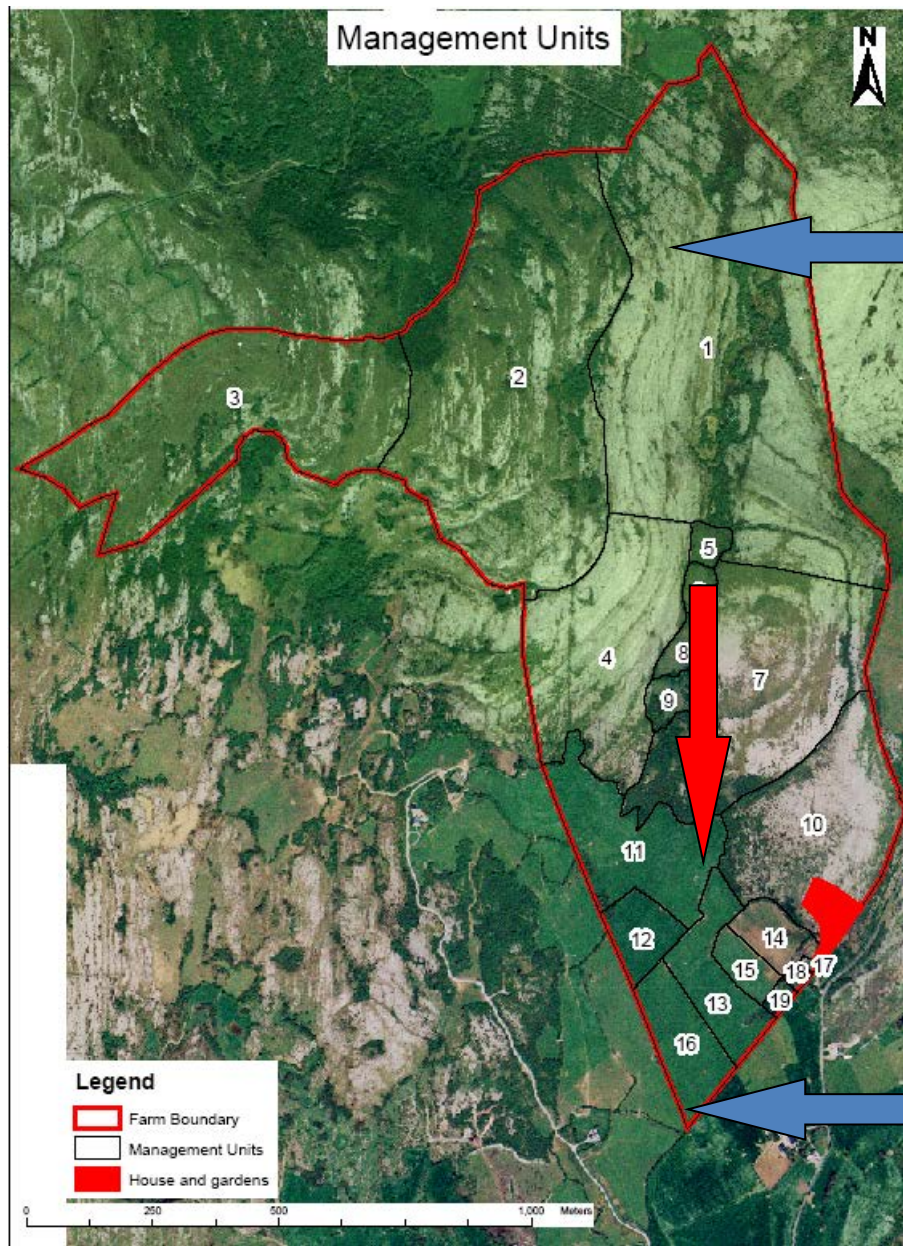


....and yet their cattle are very fat. The grass grows in tufts of earth of two or three foot square which lies between the limestone rocks and is very sweet and nourishing (Ludlow, 1651, cited in Ó Dálaigh, 1998)



Burren farming now in decline, but tourism and recreational use of the region is growing

Polarisation of agricultural activity within farms:



Strive for Efficiency



Changes in farming = impact on Burren habitats, for example:



Burren's 'values' threatened by both over-intensification and under-utilisation

National Agri-Env't Schemes/Designations not enough to tackle these issues.

Burren Programme: a bespoke, farmer-centered solution for the Burren





Burren PROGRAMME

How does it work?

Two 'Interventions'

I-1:
Payment
for site
condition

I-2:
Payment
for work
done



Management: grazing , feed ...



Works: scrub, water, walls...

Two Annual Payments

Intervention 1: Providing an incentive to better manage HNV farmland

A wide, open landscape with sparse, dry, yellowish-brown grass and scattered grey rocks. The horizon is flat under a clear blue sky.

Undergrazed, no 'output' payment

4/10

A landscape with sparse, dry grass and many bare, thin trees. In the background, there are several large, dark, rectangular structures, possibly silos or feed stores, and a few cows are visible.

Overstocked, no 'output' payment

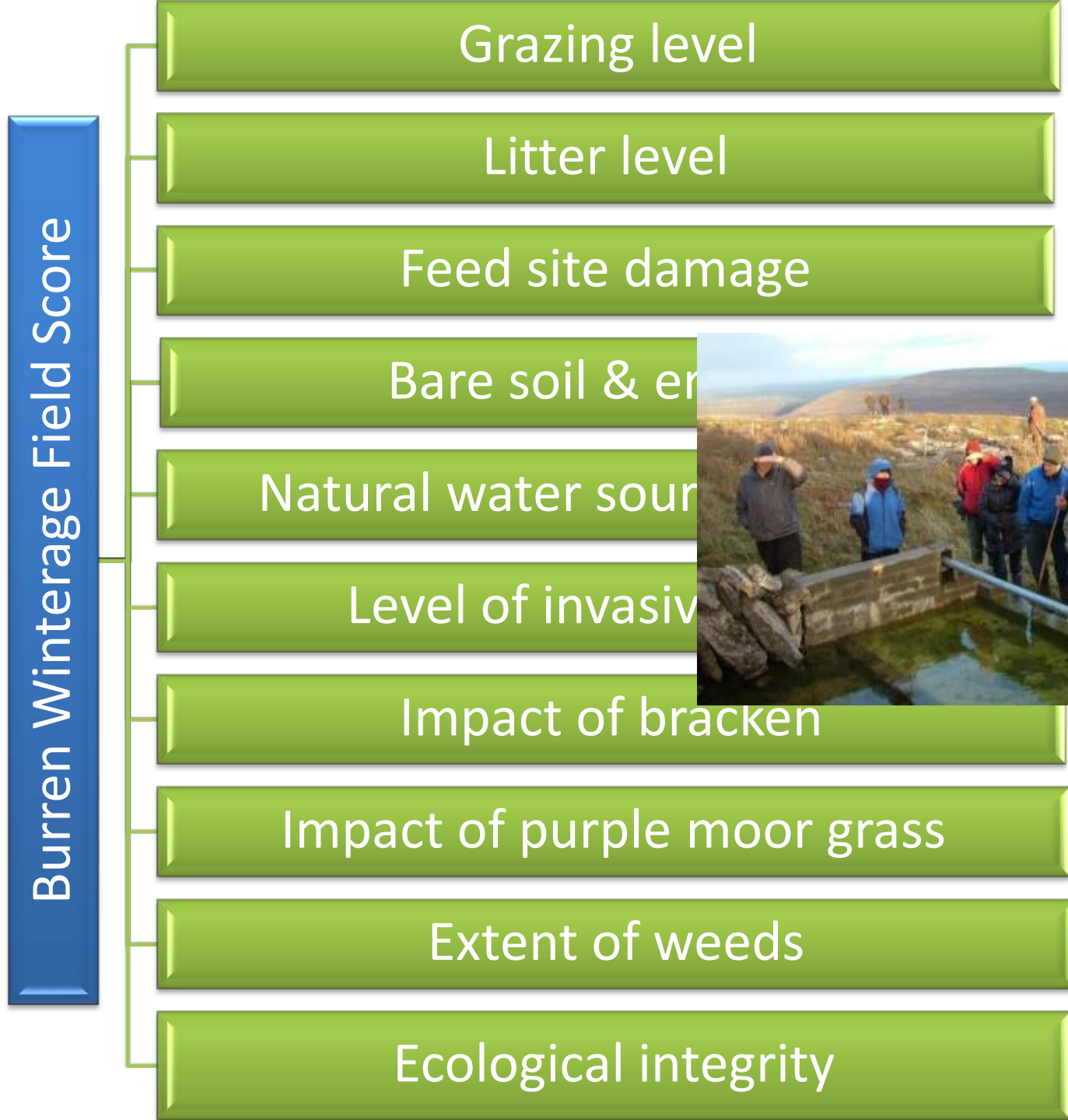
0/10

A landscape with lush, green grass and several cows (black and white, and white) grazing. The background shows a hazy, overcast sky and distant hills.

10/10

Well managed, Bonus 'output' payment

A Farmer- friendly Scoring System



**Annual
Training
Provided**

Simple, 2-page Annual 'Intervention 1' Score Sheet

Payment for Results (I-1)

Maximum payment (if all fields score 10/10): €5,647.40

Field no.	Field name	Pasture type (e.g strength)	Grazing		Management recommendations	Digitised area (ha)	Assessable I-1 area (ha) (A)	Payment rate (€/ha) (see table below) (B)	BFCP 2015 score (0-10)	BP Year 1 score (0-10) = Baseline	Payment (€) (A x B)
			Winter	Late summer							
Meadows											
7	7th Field	Meadow-like*	Yes	Yes	Delay grazing until late summer (late July onwards) then graze out well while taking care to avoid poaching. Do not apply any fertilizer. Control weeds.	0.50 ha	0.34 ha	€0	3	3	€0.00
9	Pump Field	Meadow-like*	Yes	Yes	Delay grazing until late summer (July onwards) if possible, then graze out as well as ground conditions allow (avoid excessive poaching). Control scrub, especially along fringes of rocky outcrops. Control weeds and improve water supply to prevent damage at water points.	3.00 ha	2.10 ha	€168	7	7	€352.80
Winterage											
5	5th Field	Middling	Yes	Yes	Grazing system has improved, increasing field score. Graze well in late summer (August onwards) and early winter. Continue work to control encroaching scrub, as well as the high level of bracken and weeds found across the site.	3.40 ha	0.49 ha	€72	4	6	€35.28
6	6th Field	Strong	Yes	Yes	Reduce level of summer grazing - graze in late summer (August onwards) and early winter. Avoid poaching. Control weeds.	1.40 ha	1.07 ha	€72	5	6	€77.04
1	1st Field	Middling	Yes	Optional	Reasonably well grazed over winter, occasional light summer graze (August onwards) will help top-off stronger sections. Also, improve water facilities - this will help improve grazing and reduce pressure on water point. Treat regrowth from previous scrub work - failure to fully address regrowth has reduced score.	13.95 ha	11.16 ha	€84	8	7	€937.44
2	2nd Field	Middling	Yes	Optional	Graze out well in winter. A light, late summer graze (August onwards) will help top-off stronger growth. Requires better water facilities for livestock, continued scrub removal (and regrowth) work, weed control and wall repair.	10.65 ha	8.30 ha	€96	8	8	€796.80
4	4th Field	Middling	Yes	Yes	Increase grazing in winter and also graze the valley area in late summer (late July onwards). Control encroaching scrub (mainly low blackthorn), bracken and weeds (by entrance gate).	5.25 ha	4.85 ha	€96	8	8	€465.60
3	3rd Field	Middling	Yes	Optional	Graze out well in winter. A light, late summer graze (August onwards) will help top-off stronger growth. Fix water trough overflow, control encroaching scrub and also control patches of weeds and bracken.	7.20 ha	6.79 ha	€135	9	★ 9	€916.65

Total: 45.35 ha 35.10 ha Baseline average (by area): 7.68

Total I-1 Payment Due: €3,581.61

Compiled by Advisor, checked by Local Team

Low scores? – Action needed! Farmer is allocated an allowance within which he/she can nominate (& co-fund) tasks to increase score

Payment for Actions (M2)



All necessary permissions and complying with any conditions attached

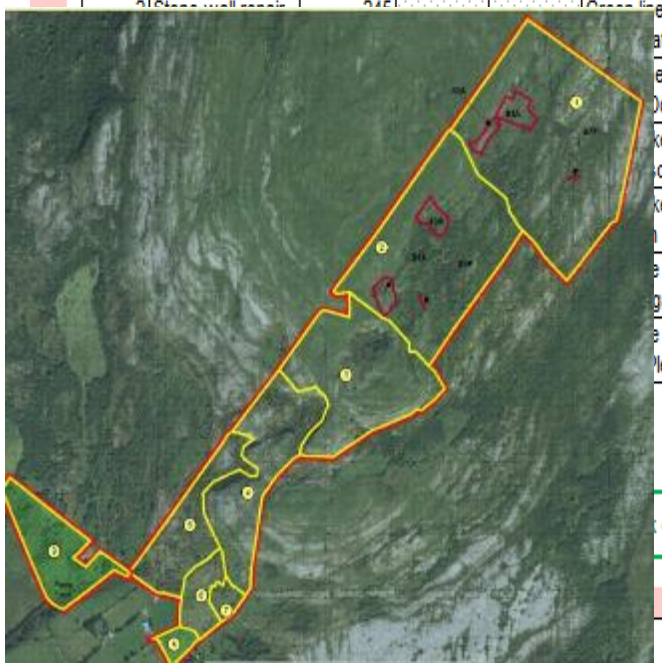
Maximum allowance €7,000.00

Please tick all tasks farmers agrees to do

Description	Funding rate (%)	Paid per unit (€)	€ Farmer receives	Agree to do?
<p>Removing scrub tasks (S1A): Cut using chainsaws and immediately treat stumps with herbicide. Do or Sept-Dec (outside the bird nesting season). Costings include piling, treating, herbicide & disposal.</p> <p>Using herbicides: Roundup Biactive and Barclay Gallup Biograde are the only herbicides permitted for this task. Make sure you read and follow the directions on the product label. The Basic Payment Scheme rules apply to this task.</p> <p>Cut and treat all briars, blackthorn, hazel and other scrub within and around the enclosure, and all with the mothair but leave the mature scrub marked on the map. <u>All cut scrub must be removed from the enclosure and either piled in a suitable location for rotting or removal by tractor to a place where it can be disposed of.</u> Labour estimate of 4 days for 2 people, which includes additional time to allow for removing the enclosure.</p> <p>Work around a Recorded Monument the work was notified to NMS and permission received on 16/08/2017.</p>				
Green line labelled A-B on map. Repair the northern boundary wall to its original high standard using fallen and loose scattered stones. Do not take stones from other built structures.	50%	2.29	490.06	<input type="checkbox"/>
Green line labelled C-D on map. Repair the northern boundary wall to its original high standard using fallen and loose scattered stones. Do not take stones from other built structures.	50%	2.29	561.05	<input type="checkbox"/>
Green line labelled E-F on map. Repair internal wall to its original high standard using fallen and loose scattered stones. Do not take stones from other built structures.	75%	3.43	627.69	<input type="checkbox"/>
Cut ferns in lower part of field 9 and throughout field 10. Cut in mid-June and again 6 weeks later using a scythe or bladed strimmer. Labour estimate of 10 days for 1 person.	75%	90.00	900.00	<input type="checkbox"/>
Cut ferns in field 9. Cut in mid-June and again 6 weeks later using a scythe or bladed strimmer. Wipe the ground of briars. Labour estimate of 5 days for 1 person.	75%	90.00	450.00	<input type="checkbox"/>
Build and hang a traditional, Burren-style gate at the location indicated on the map. Costing includes a set of gate posts/stone piers and labour. Any loose rock should be cleared away from the gate site.	63%	260.00	260.00	<input type="checkbox"/>
Build and install a 350 gallon plastic water trough at the location indicated on the map. Costing includes the trough and labour. Please ensure the trough sits on a solid level base (limestone chip is ideal).	50%	240.00	240.00	<input type="checkbox"/>

Total for proposed Actions € 4,438.52

Total for agreed Actions € _____



completed continues to be exceptional. --



Improved water 'harvesting'



Increased water storage



New pumped supplies
& delivery



Improvements in water quality and more efficient usage

Improvements in access to sites



Improving Supplementary Feeding systems



Restoring/increasing grazing



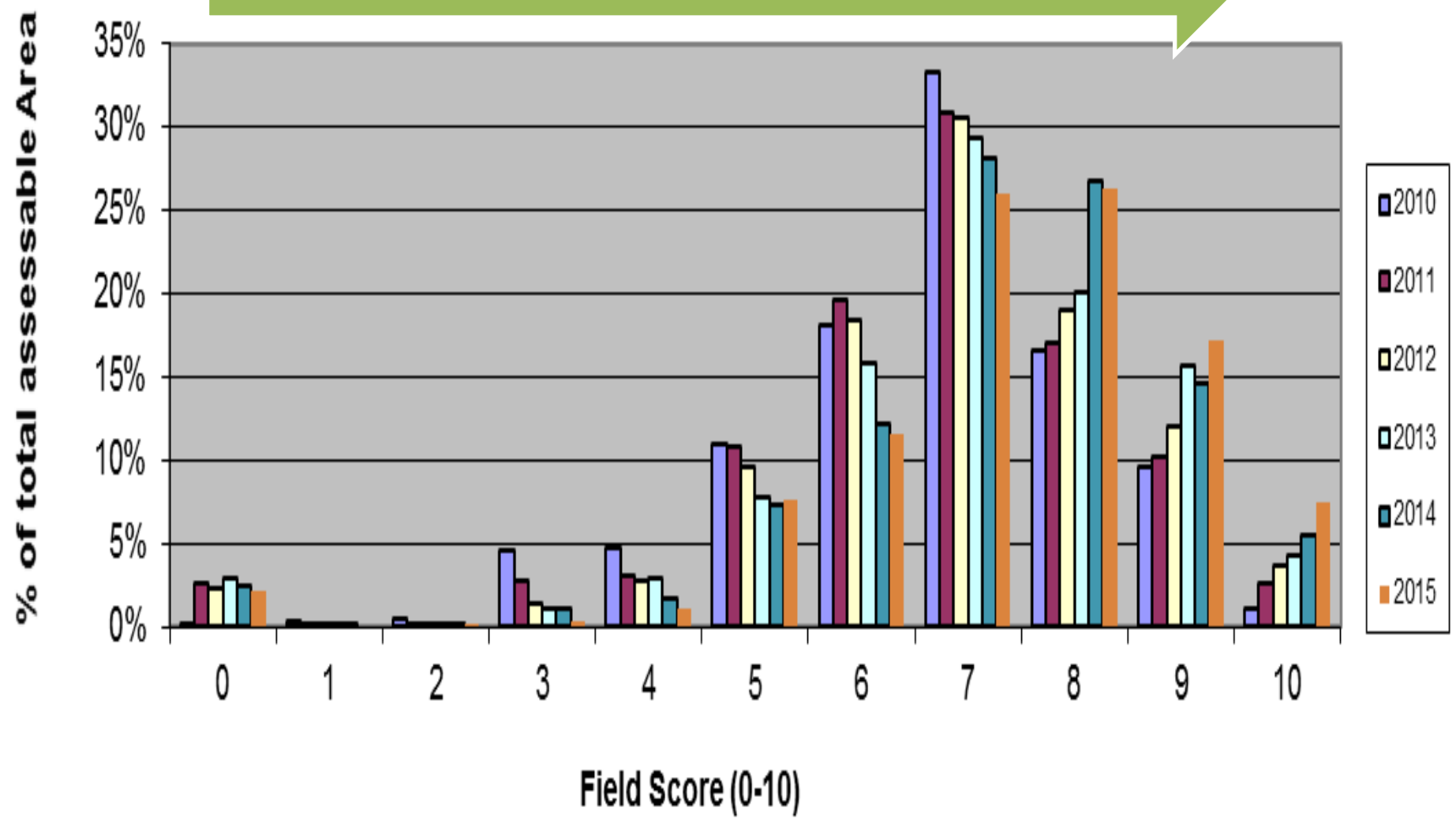
Potential Result (over time):

Score 10/10 €180/ha



Variation in Field Scores 2010-2015

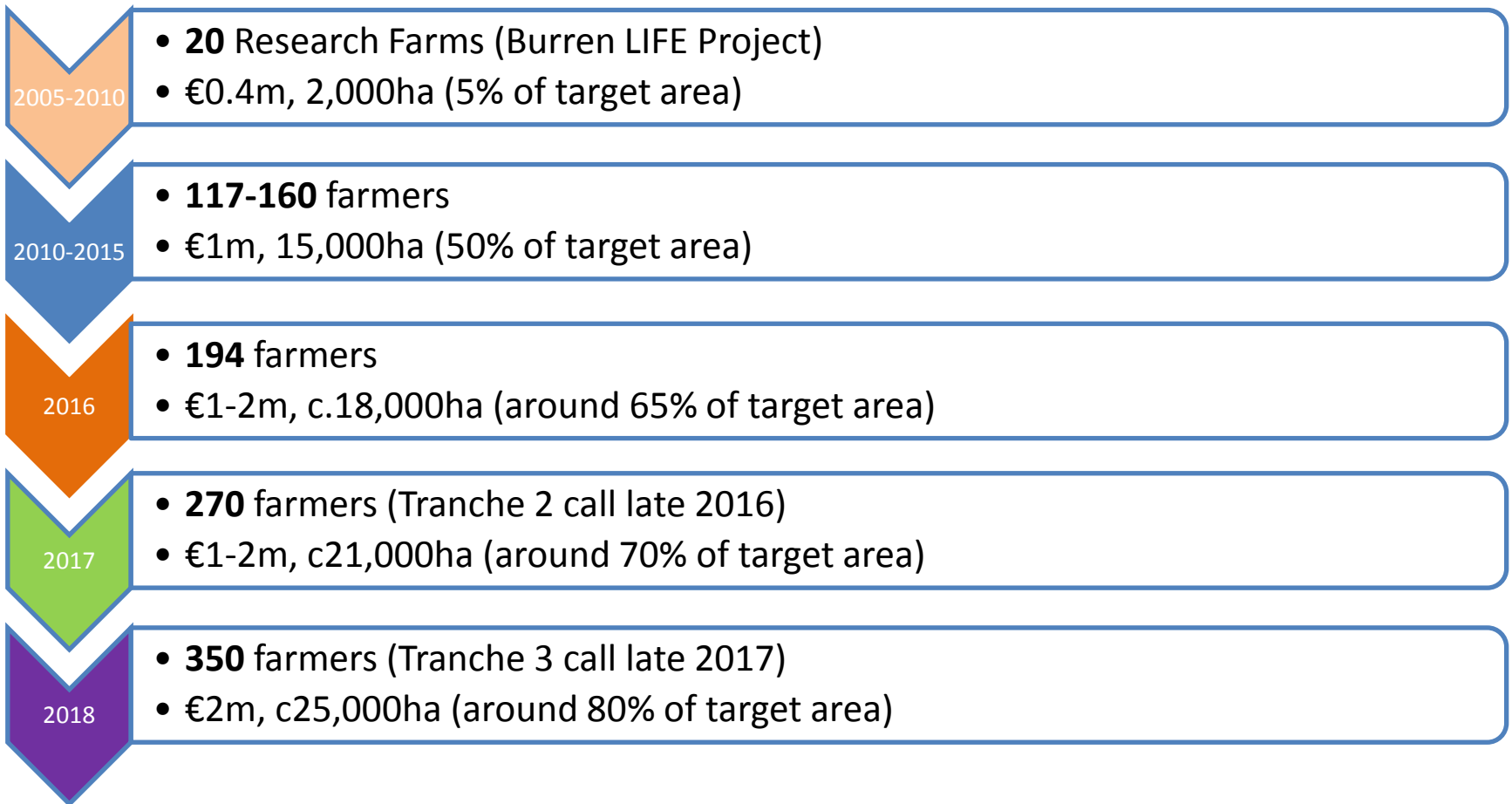
Gradual Shift to higher scores (7-10)



Average I-1 score in 2017: 7.09; Average I-1 payment: €2,767 per farmer.



Burren PROGRAMME



Burren Programme Design Principles?

Results & Action
Based Payments

Targeted
Approach

Farmer Centered

Pocket, Head and Heart

Adaptive across
place and time

Partnerships
(Holistic)

'... the majority of local people have not taken ownership of their own heritage...is once more imposed 'from above' and 'from outside' (O'Rourke, 2001).



Ait Bheo – connecting people with their places and their role in caring for them

Celebrating pastoral farming

Bord Bia
Irish Food Board



Community wellbeing

burrenbeo**trust**
connecting people and place



change X



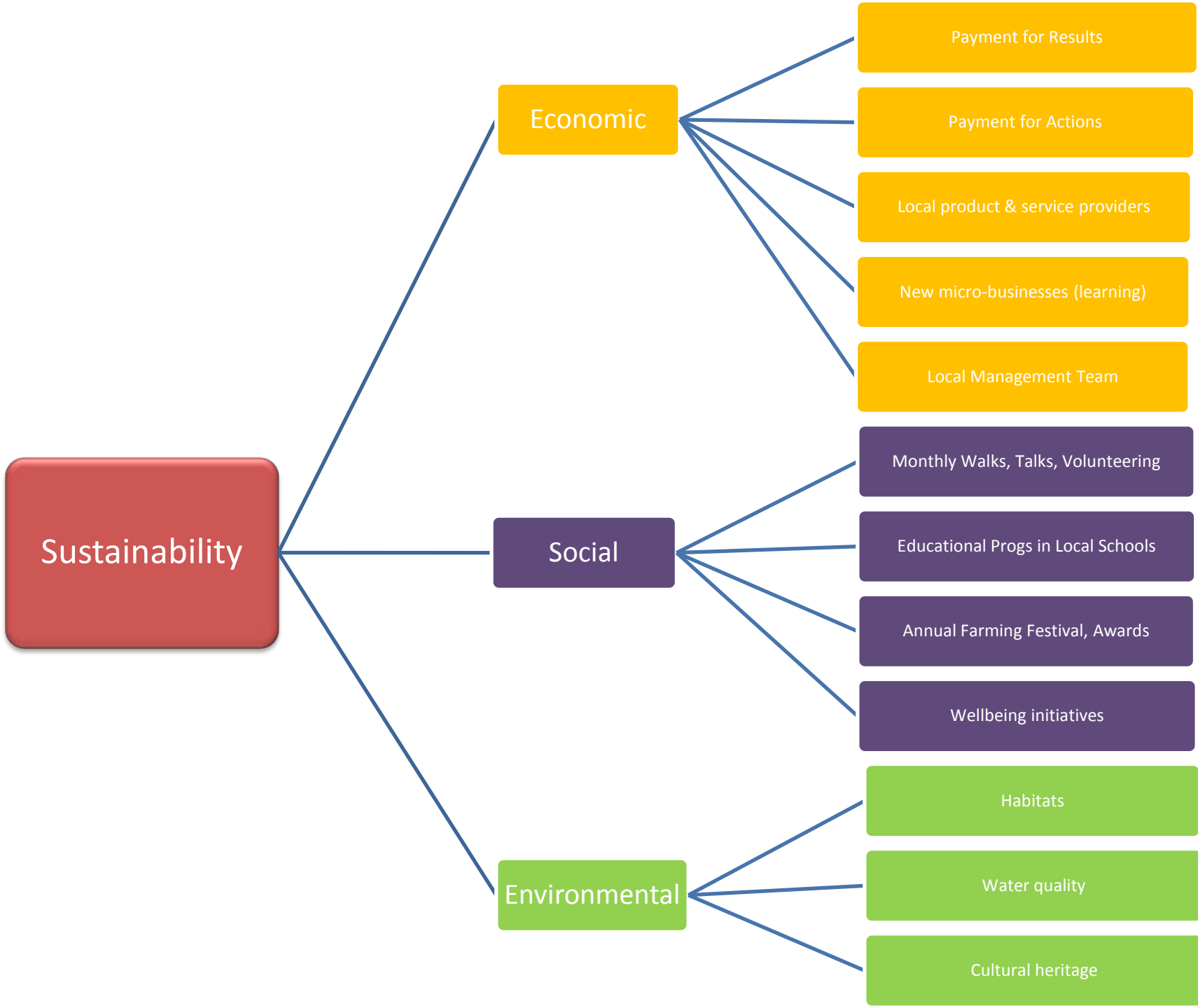
A Vision for Sustainable Farming in the Burren

The Burren will be an increasingly attractive place to live and farm, a place where farm families enjoy the support and respect of society to produce quality food and deliver valued services, thereby sustaining the Burren's rich heritage for the benefit of all.

Sharing our story



A vision for the Burren? Ireland's Learning Landscape





Sustainable farming in a high nature value area? A long and winding road.

THANK YOU

www.burrenprogramme.com

www.burrenbeo.com