

Rural Futures

New Zealand experiences

Dr Liz Wedderburn

Liz.Wedderburn@agresearch.co.nz

Rural Futures joint Teagasc-SRUC Conference 12/13 March
2018

Rural futures as complex systems

What communities desire

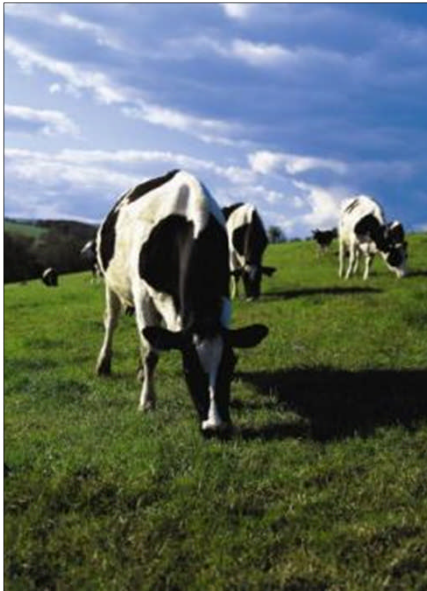
Adaptive capacity and learning

Concrete ways to support



Agriculture is New Zealand's economic engine

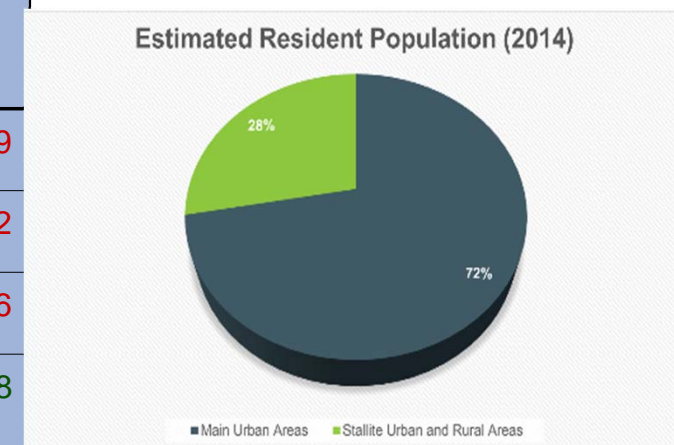
Agriculture accounts for 45% of NZ's merchandise exports*



Doubling primary sector exports by 2025

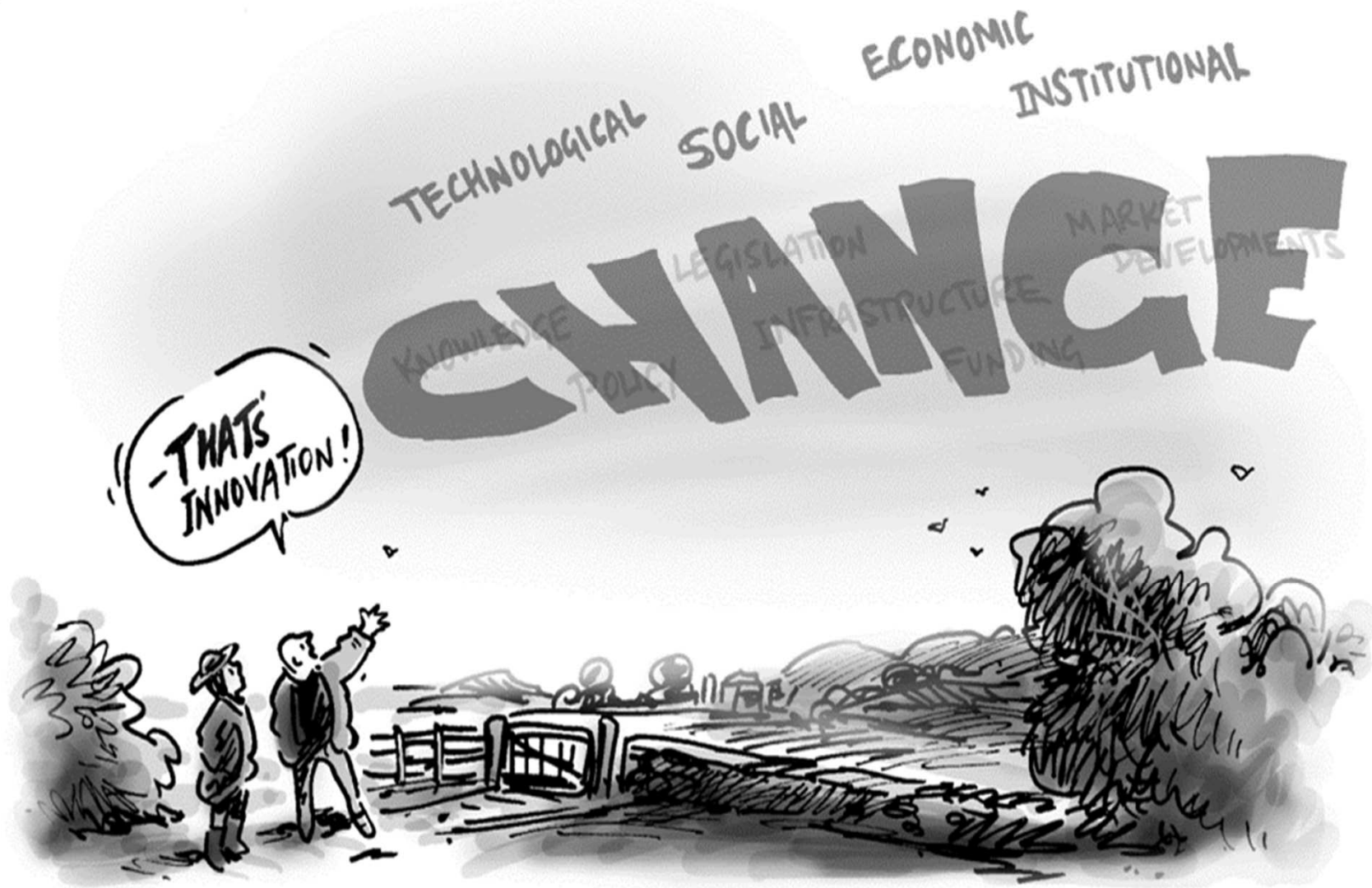
Split of urban and rural

Area	Population density	Percentage of New Zealand population	Percentage of New Zealand land area
Main urban area	522.8	71.1	1.9
Satellite urban community	232.1	3.0	0.2
Independent urban community	265.9	11.7	0.6
Rural areas with high urban influence	12.9	2.6	2.8
Rural areas with moderate urban influence	6.5	3.6	8.0
Rural areas with low urban influence	2.6	6.0	33.3
Highly rural/remote areas	0.5	2.0	53.1
New Zealand total	14.2	100.0	100.0

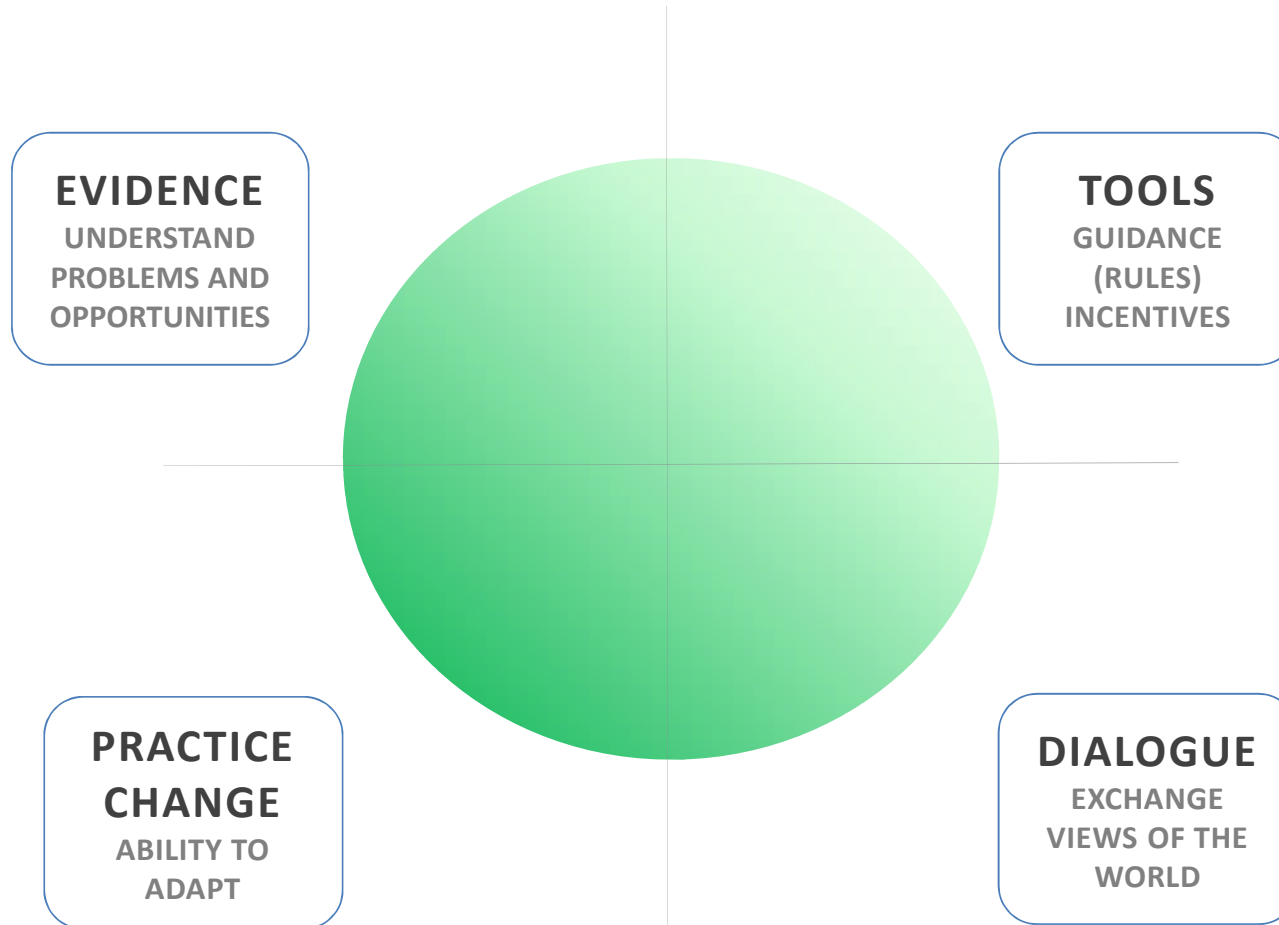


Source



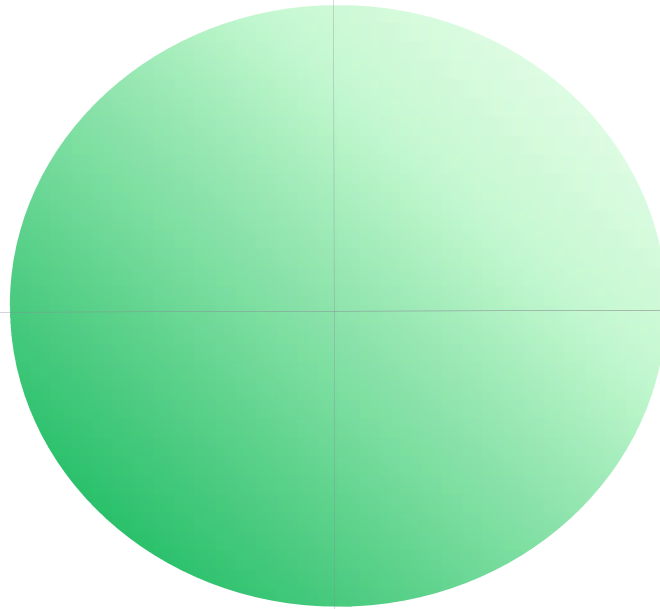


PRACTICE OF CHANGE



PRACTICE OF CHANGE

EVIDENCE
UNDERSTAND
PROBLEMS AND
OPPORTUNITIES



COMMON THEMES

Resource limits

Nutrient load to
come

Adaptation to
climate change

Loss of
ecosystem
function

Growth within
limits



Declining service
and infrastructure

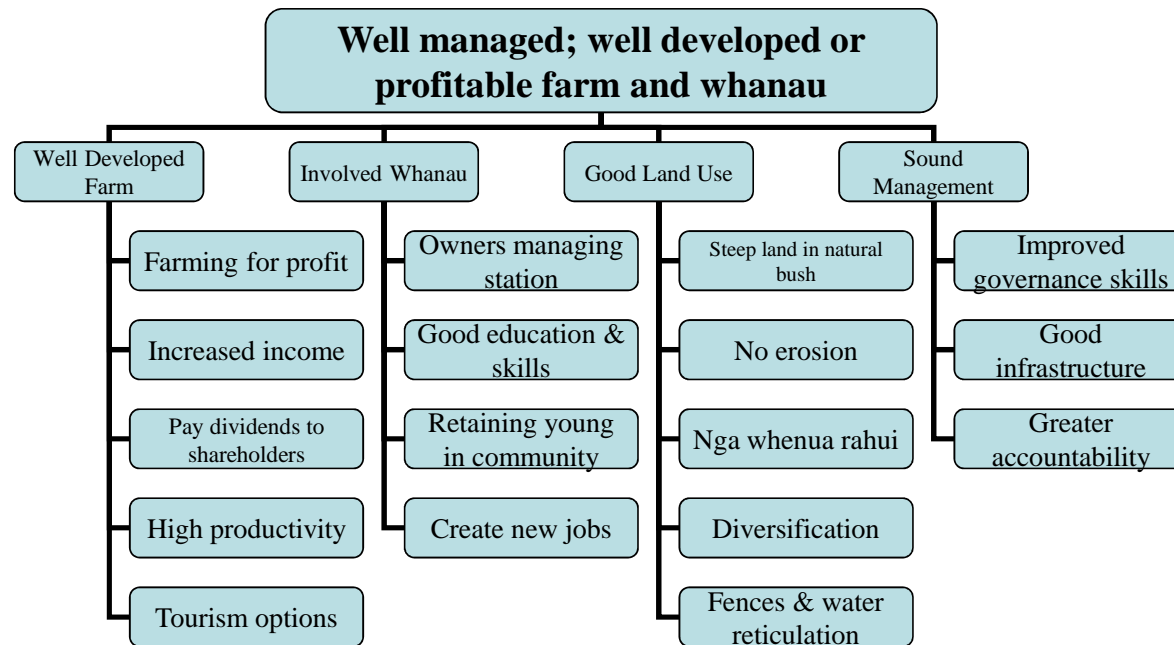
Inequality

Retention of youth

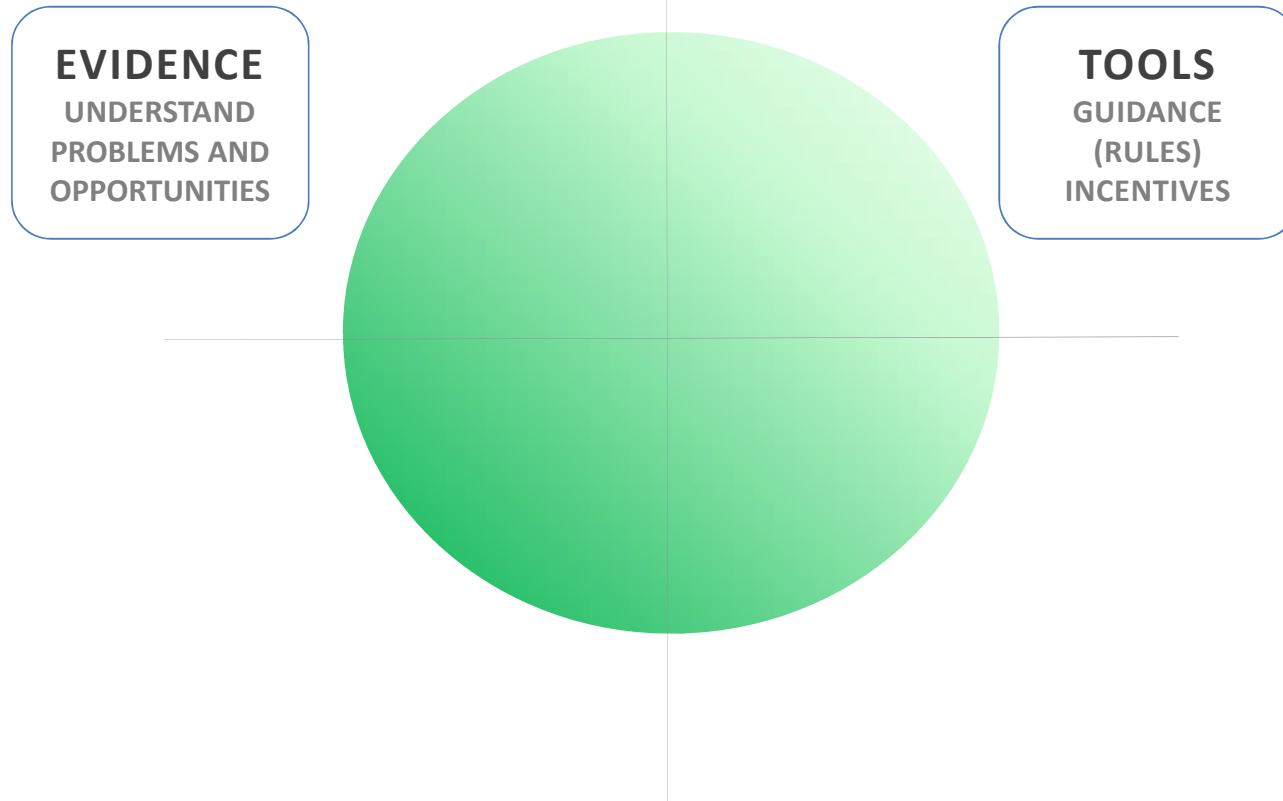
Social cohesion
and vibrancy

Diversity of
employment

Whanau goals



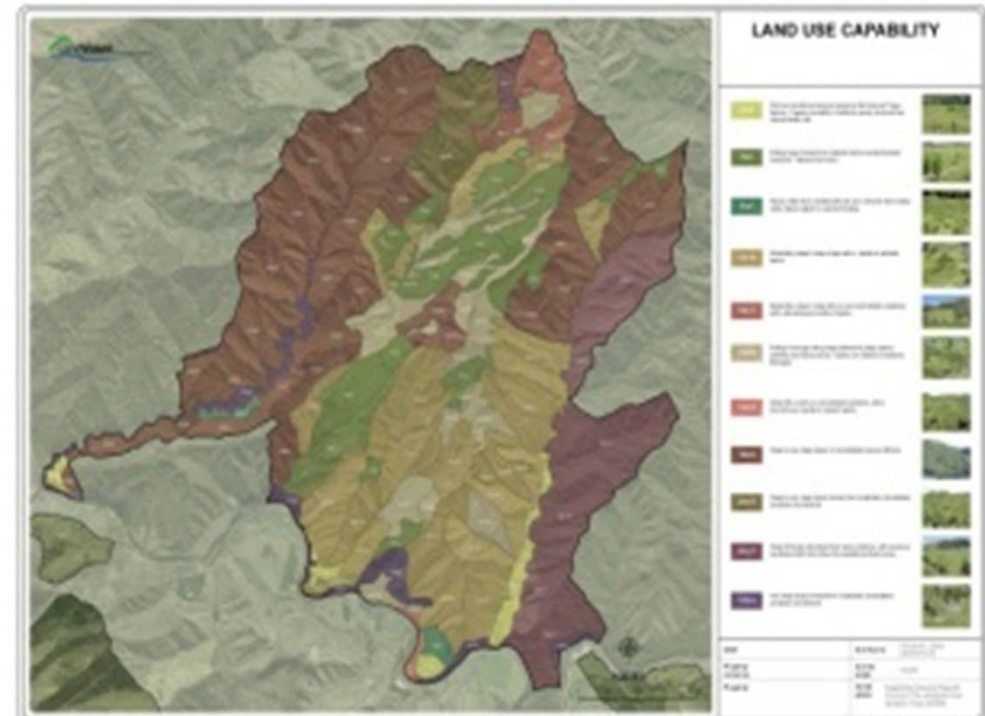
PRACTICE OF CHANGE



Innovation based on values, resources and understanding interdependencies

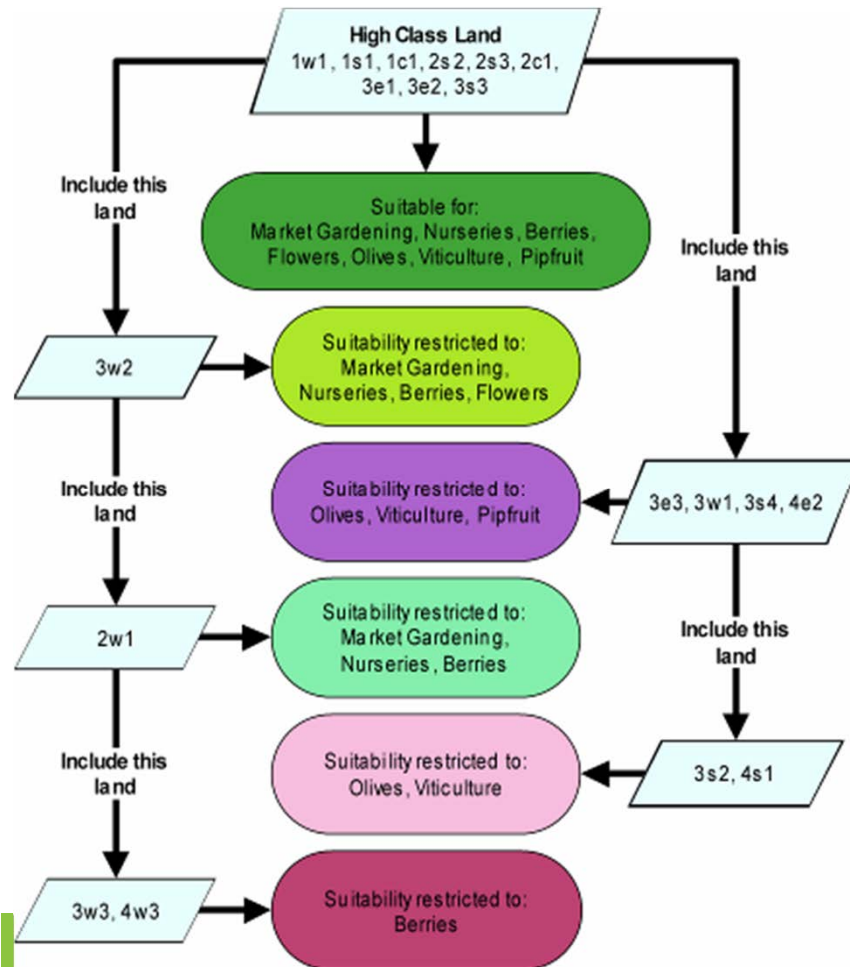
Base Information for design

- Aims & objectives
 - What scale?
- Base maps/ref maps
- Local knowledge and historical use
- Existing land uses
- Infrastructure



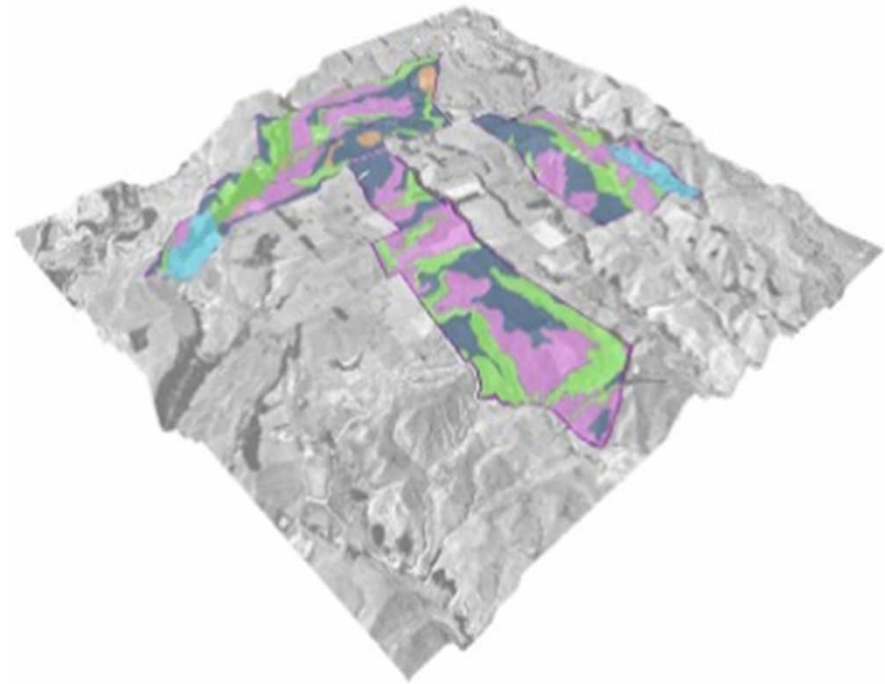
Interactive decision making

- Land use options

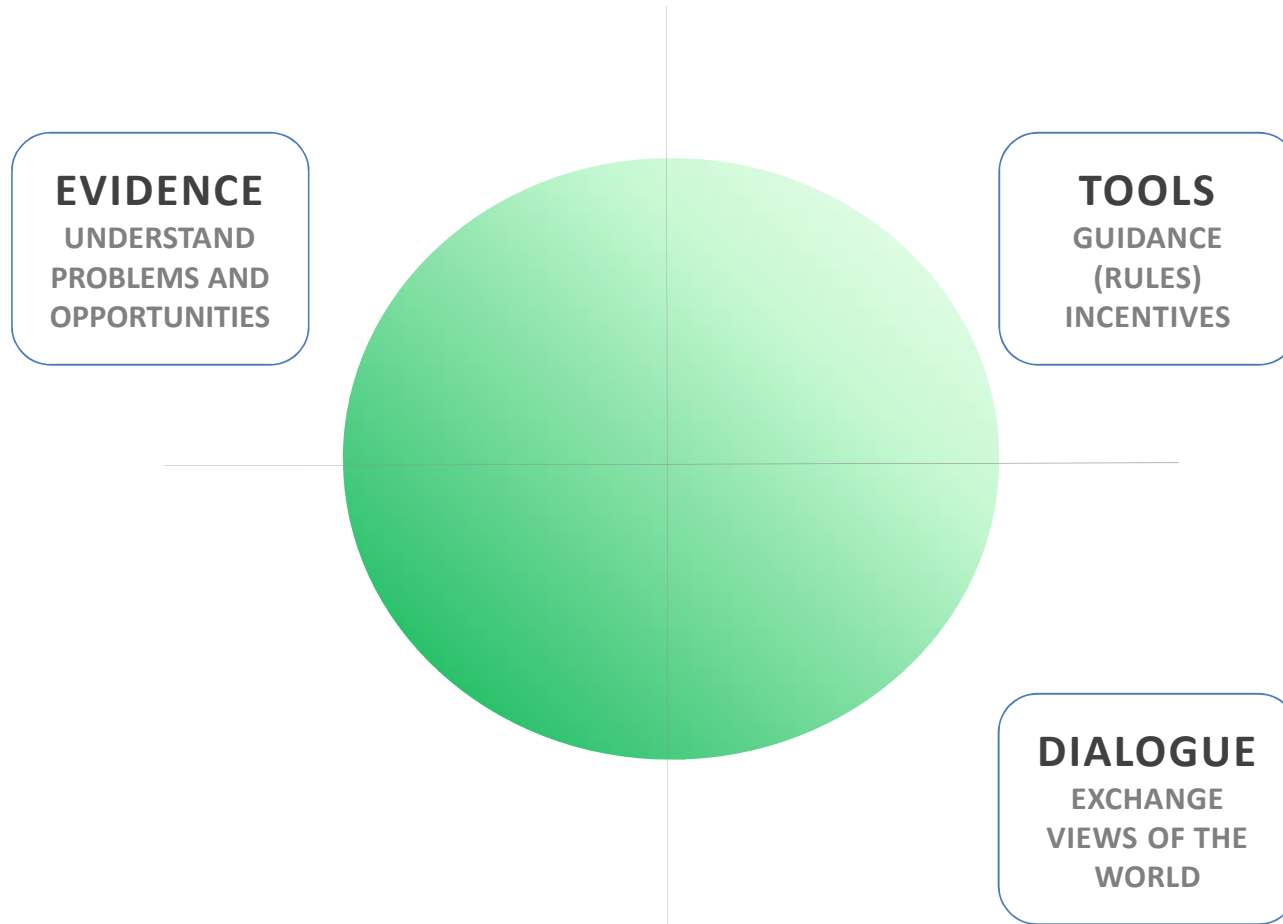


Configuration

- Feasibility & logistics
- Balance for outcomes
- Networks



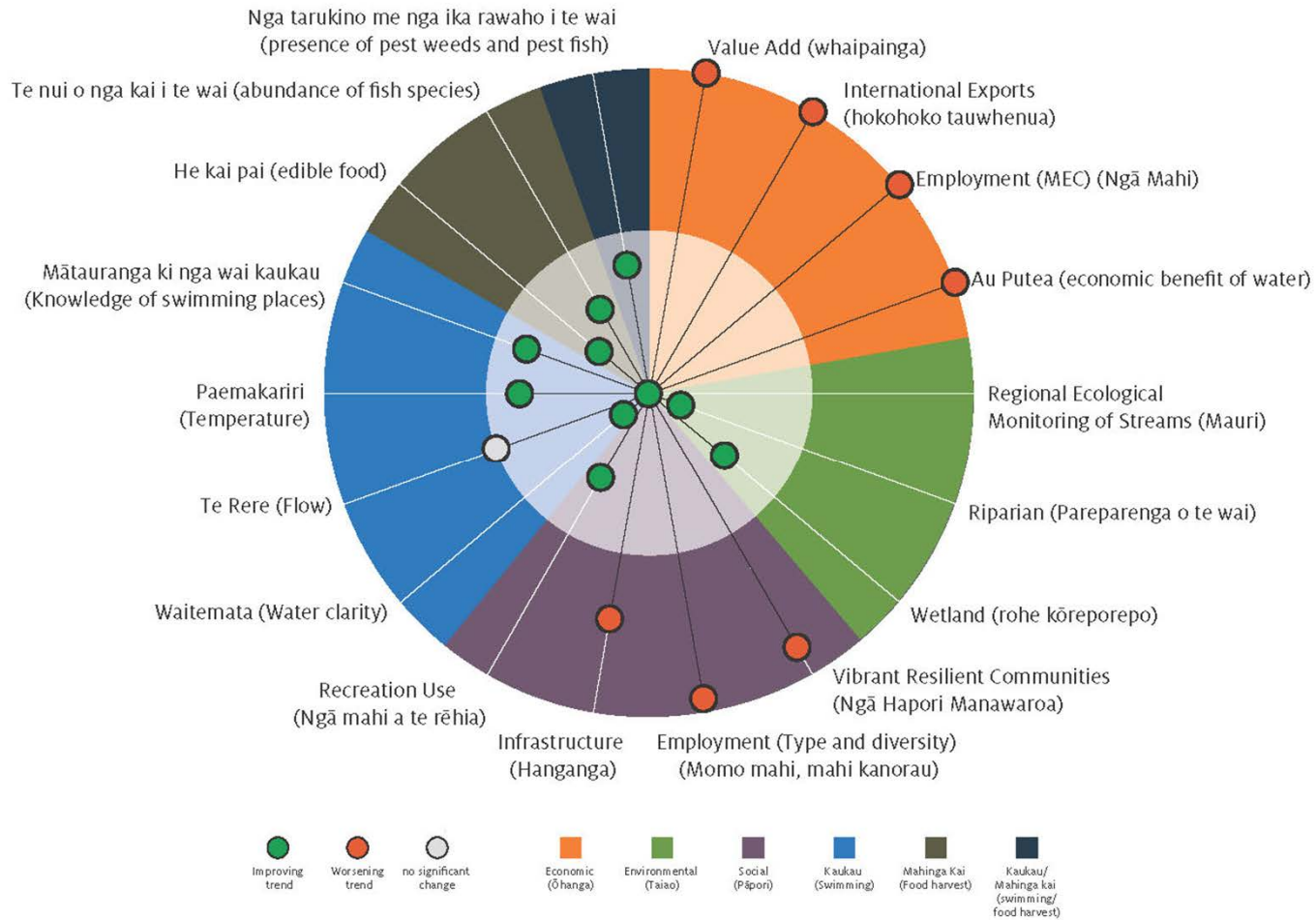
PRACTICE OF CHANGE



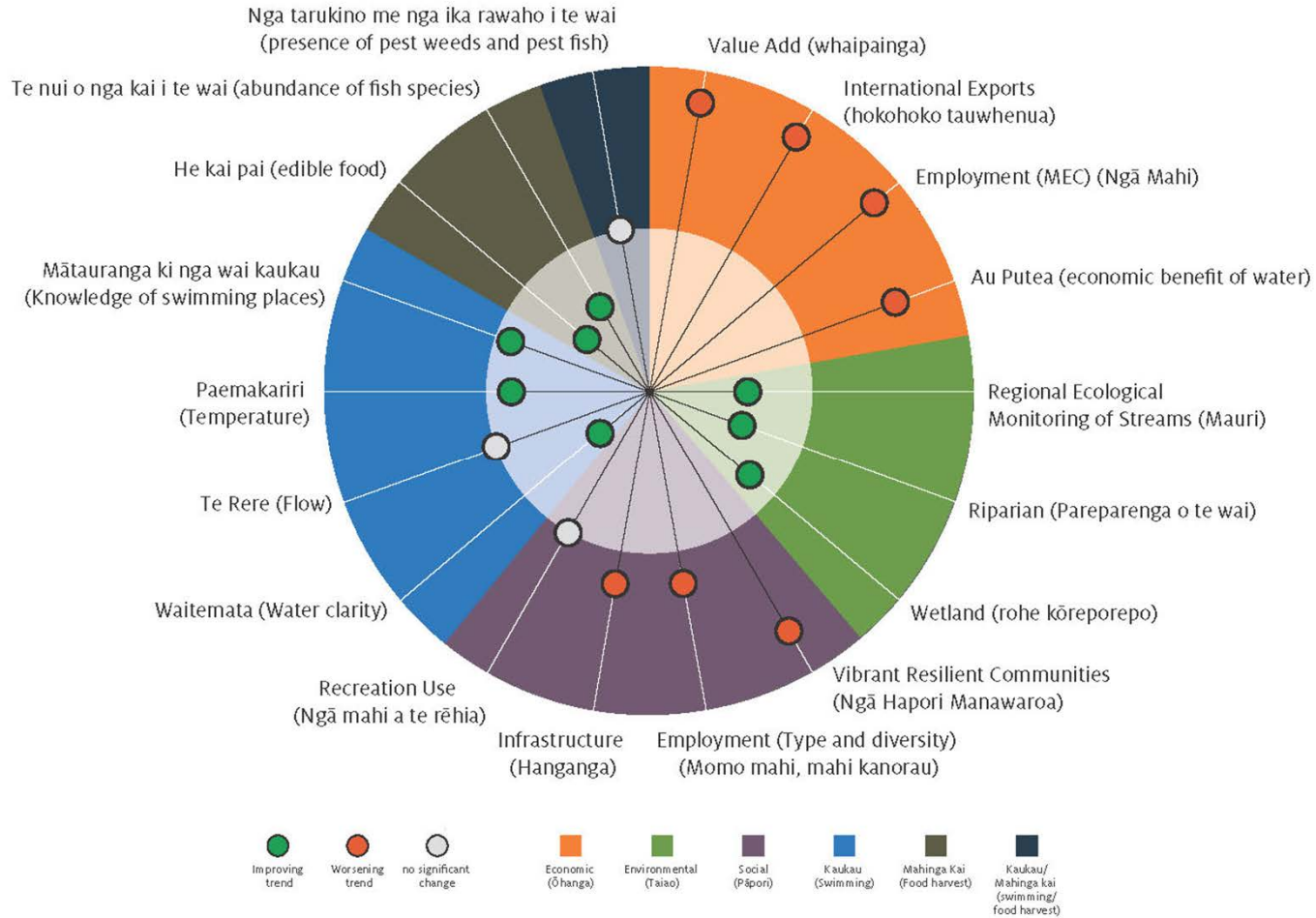
Co-Management, Collaborative stakeholder groups



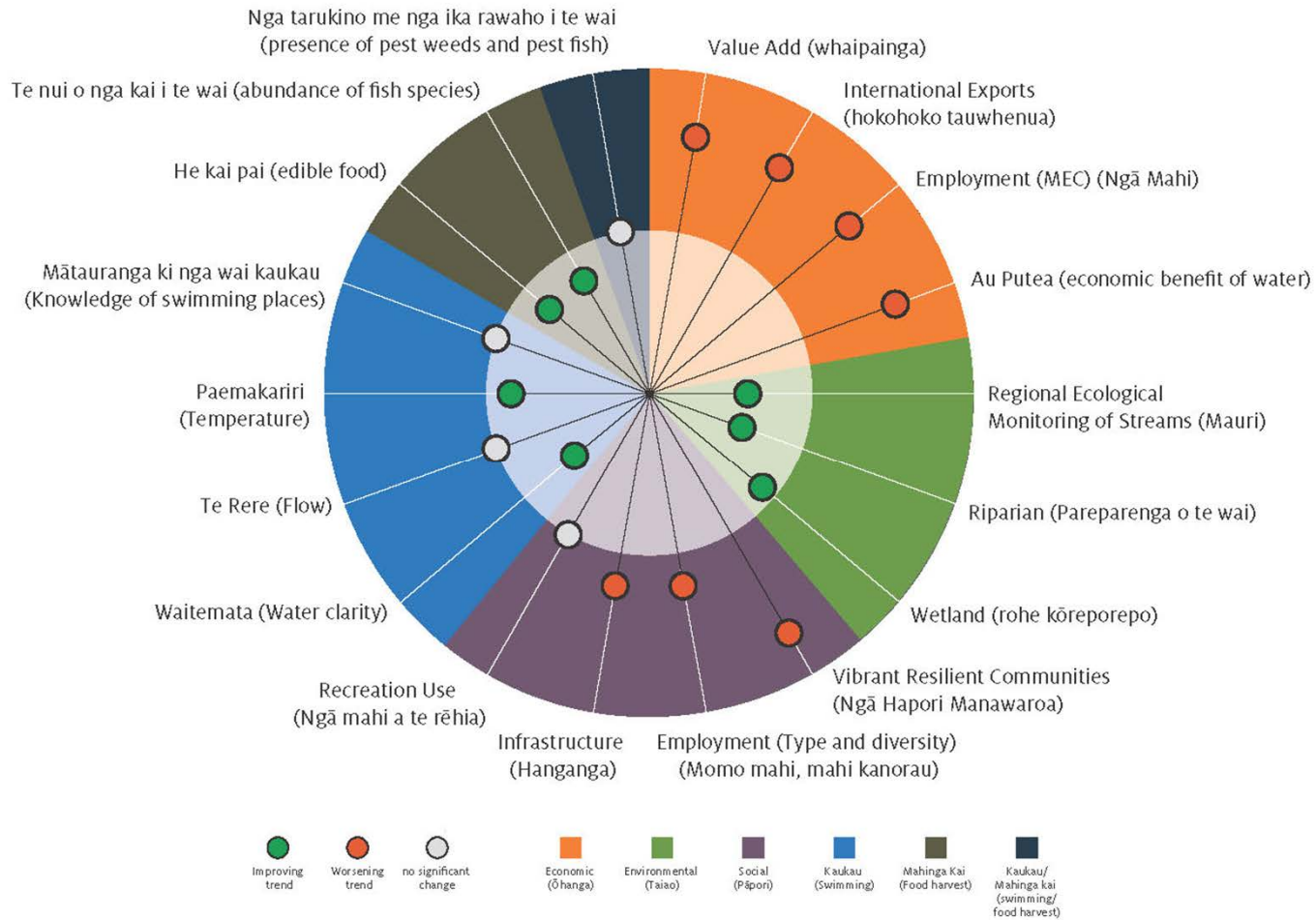
100 per cent



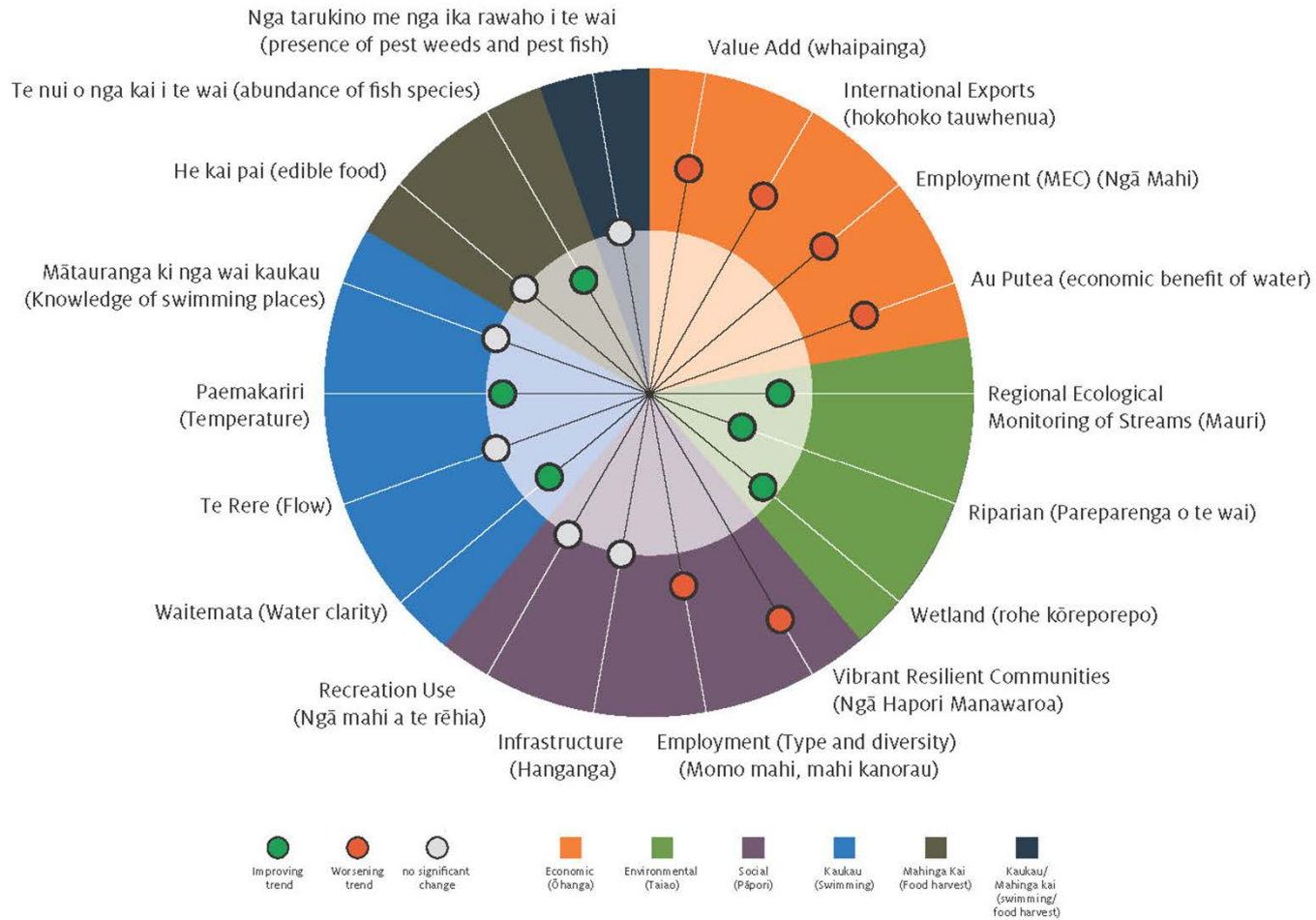
50 per cent



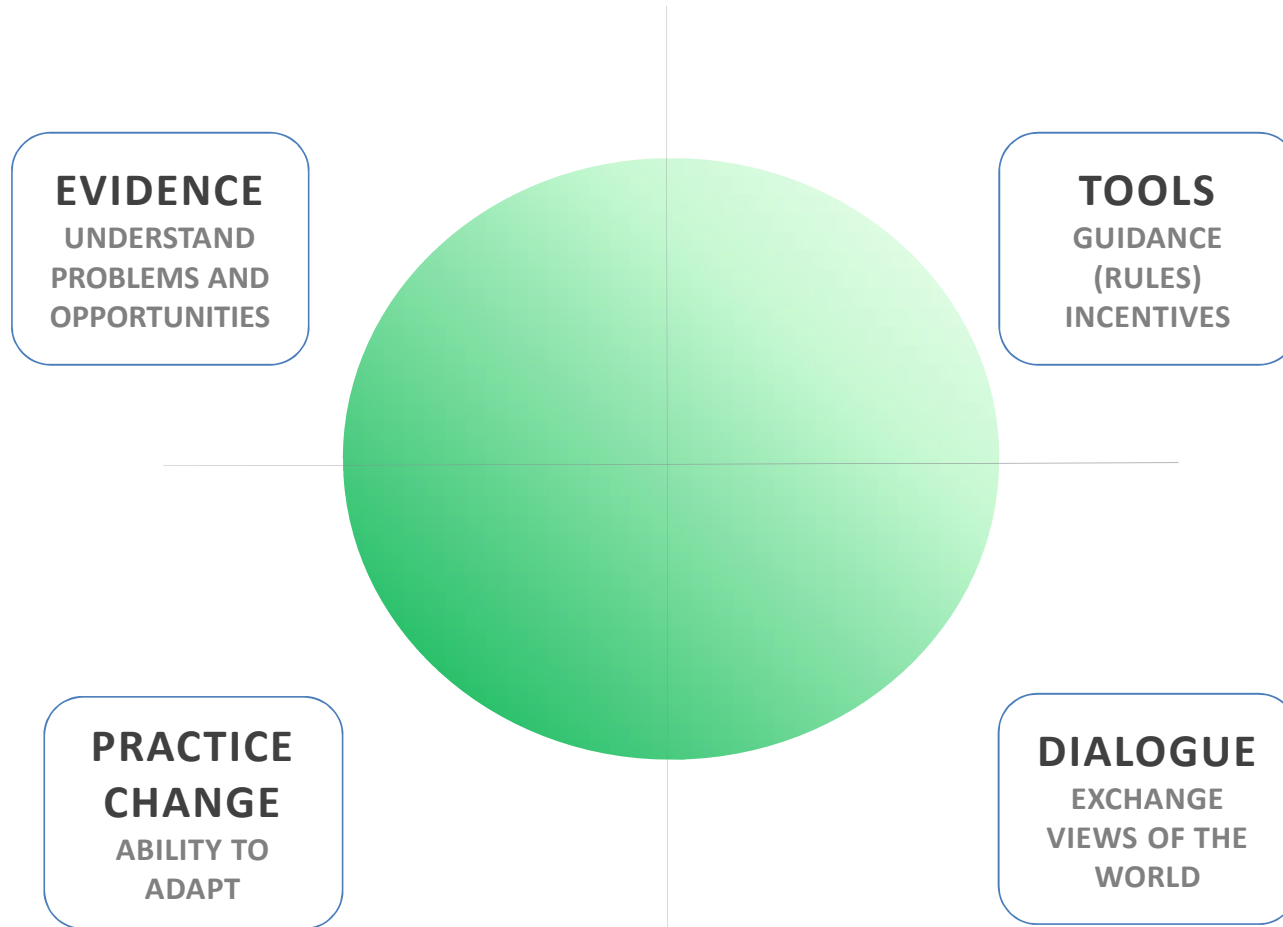
25 per cent



10 per cent

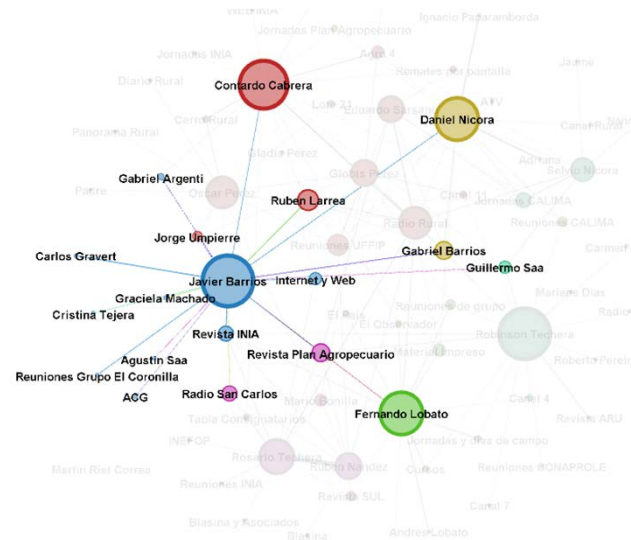
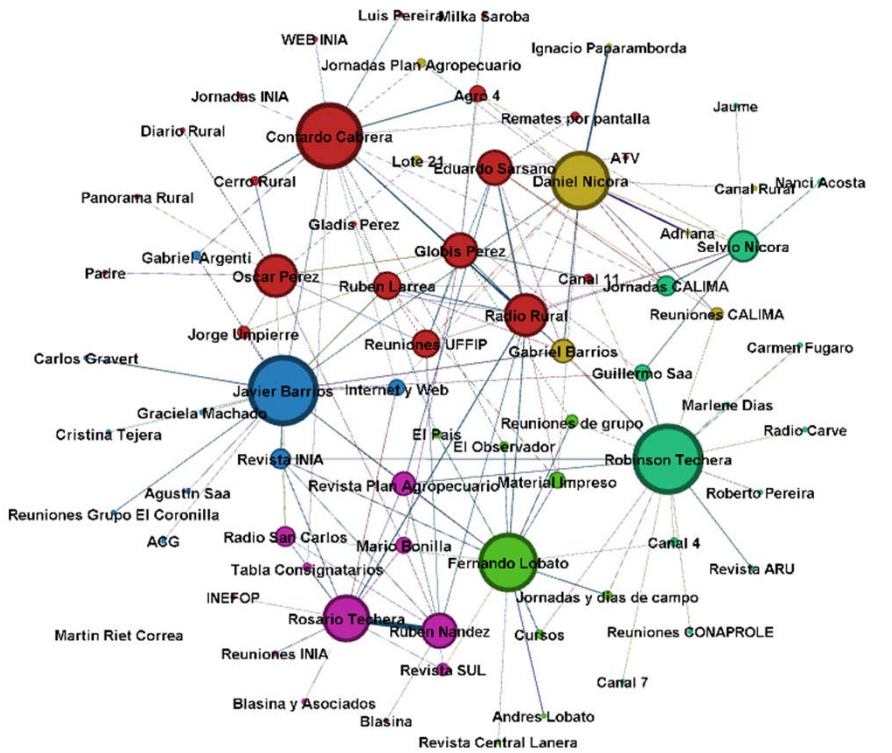


PRACTICE OF CHANGE



Connections and connectors

- Co-innovation
- Learning
- Adaptation
- Joined up leadership



agresearch
āta mātai, mātai whetū



STARTUPS
**The World's Most Comfortable Shoes
Are Made of Super-Soft Wool**

Mar 02, 2016



**EAST CAPE
MANUKA**



**STRONG
COMMUNITY
INVOLVEMENT**



TAIRĀWHITI GISBORNE

The first light

Gisborne:

Gateway to the Pacific Coast Highway

3 indulgent days with
wine, food and culture

Adventure time:
SURF, SUN AND
STINGRAYS

TAIRĀWHITI
GISBORNE

WHY WE LIVE HERE | CULTURE IS CALLING

The First Light

CASE STUDY



Northland Journeys – the Byways

COMMUNITY

We have a strong identity and sense of place.

Our strength of community means that people are closely connected. We know each other so social and business connections are easy. We enjoy an outdoor lifestyle that a great climate and accessible natural assets offer. We have the highest rate of recreation parks per capita in NZ and there are three surf breaks of national significance within a five minute drive of Gisborne city centre

Key Messages

- Build adaptive capacity through:
 - Learning environments
 - Build capability and capacity to network
- Identify and build capable leadership
- Build on ability to collaborate
- Utilise connection of people, values and resource

Thank You

