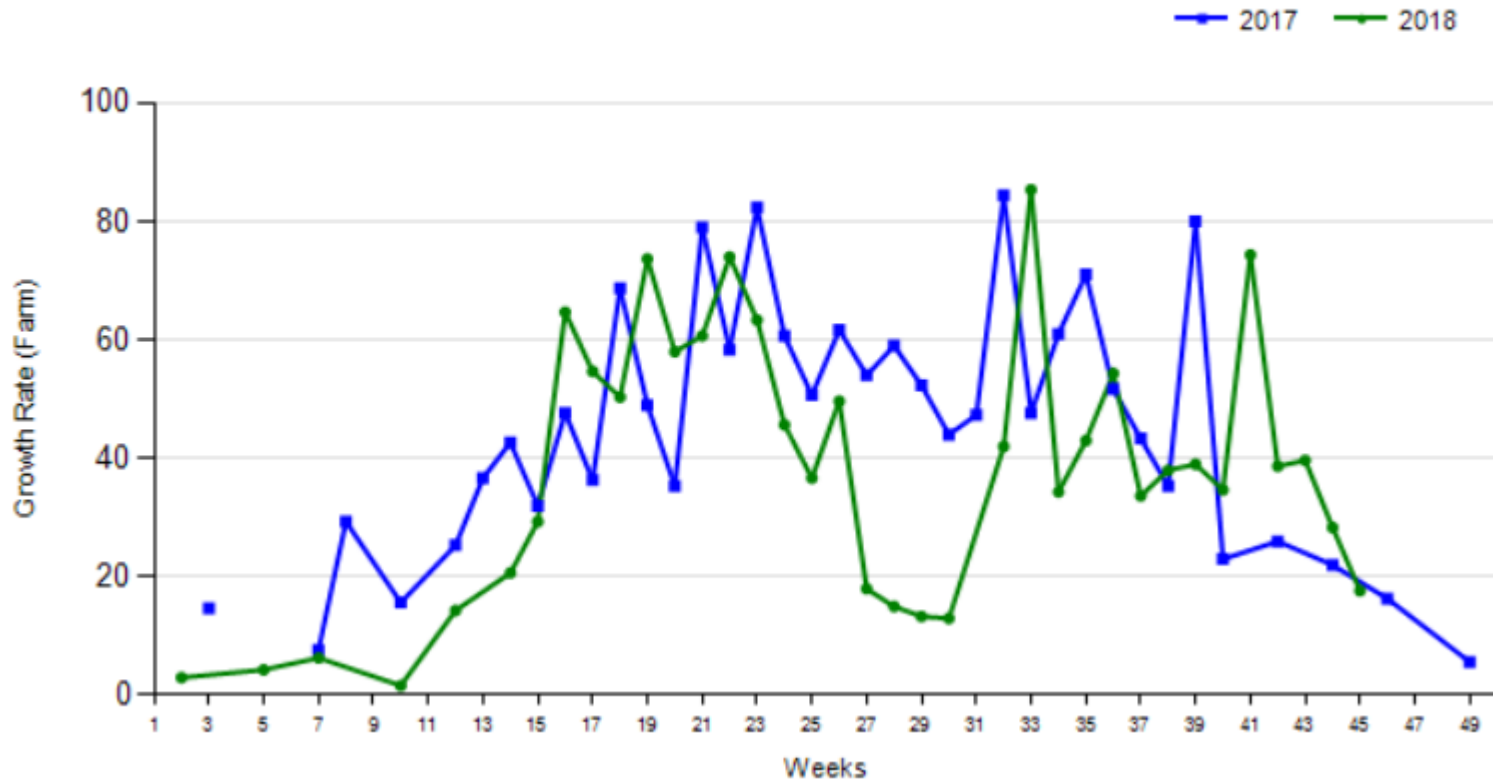


Update on National Pasture Growth Curves

Nov 12 2018

Teagasc Johnstown Castle

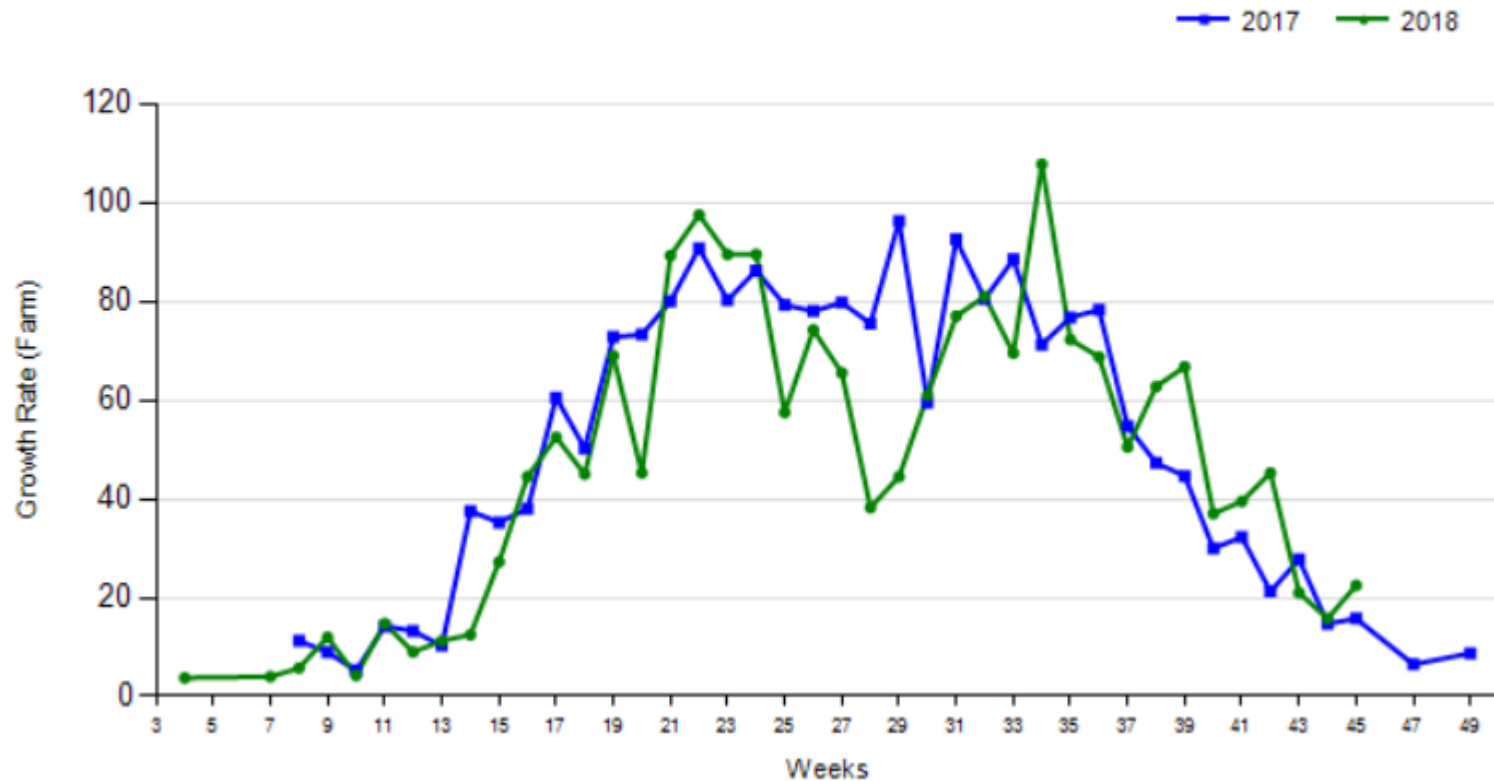
Grass Growth Curve 2017 vs 2018



	2018	2017	Diff per ha
Cumulative tDM	11.3	14.3	3.1

Teagasc Ballyhaise

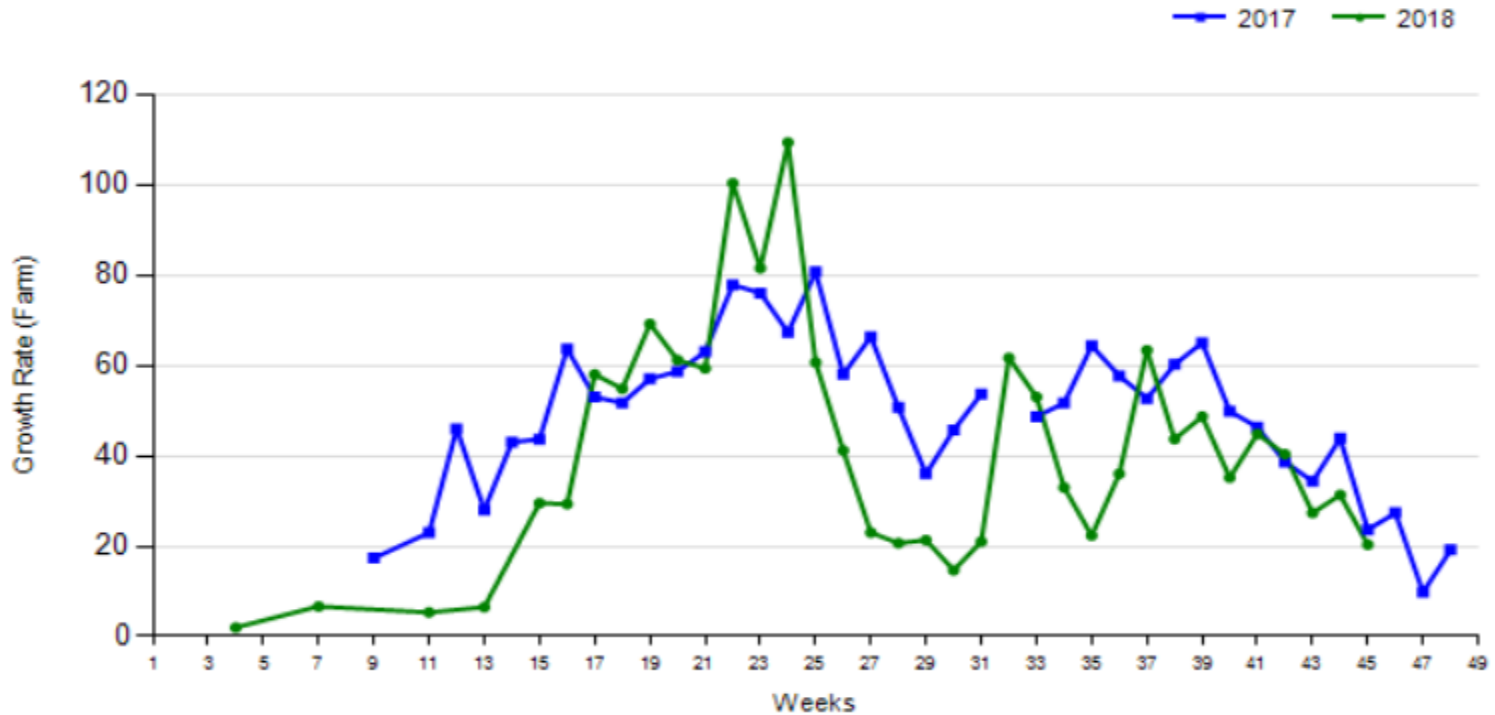
Grass Growth Curve 2017 vs 2018



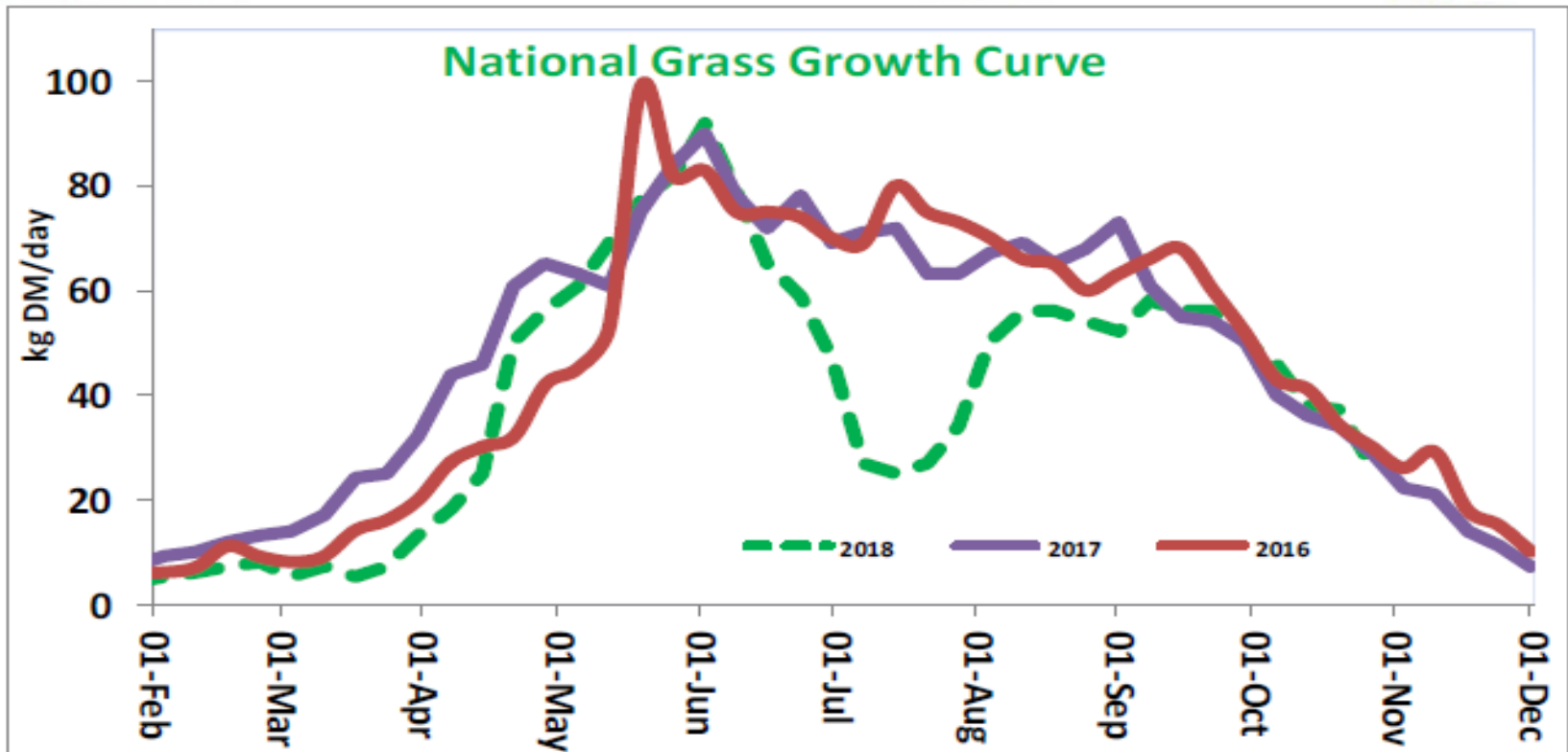
	2018	2017	Diff per ha
Cumulative tDM	13.6	14.7	1.1

Teagasc Curtins Cork

Grass Growth Curve 2017 vs 2018



	2018	2017	Diff per ha
Cumulative tDM	12.2	15.1	2.9



- Approx 1800kg DM per ha deficit v 2016-17

Summary Comments

1. Excellent recovery of weekly growth in Autumn
 - Matched long term average
2. Ground conditions and utilisation favourable
 - Reduction in routine supplement demand
3. Capacity to build additional winter feed reserve
4. Contribution from external land sources important
5. However YTD growth still lags behind
 - 1.0 to 3.0 tonnes DM per ha depending on location
 - Assumption that feed problem 'solved' on some farms

Key points:

1. **Avoid complacency**
2. Implement feed and stock plans early
3. Monitoring feed stocks progress mid-winter advised
4. Spring reserve