

Causes of Sub-Optimal Mobility

- Claw disorders ~ 90% of cases



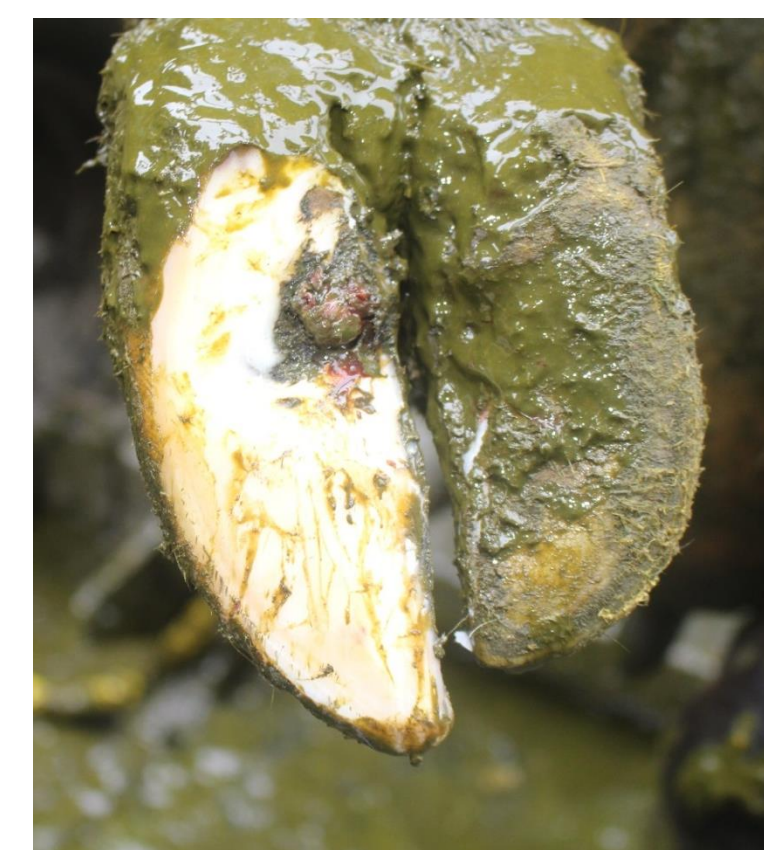
Overgrown Claw



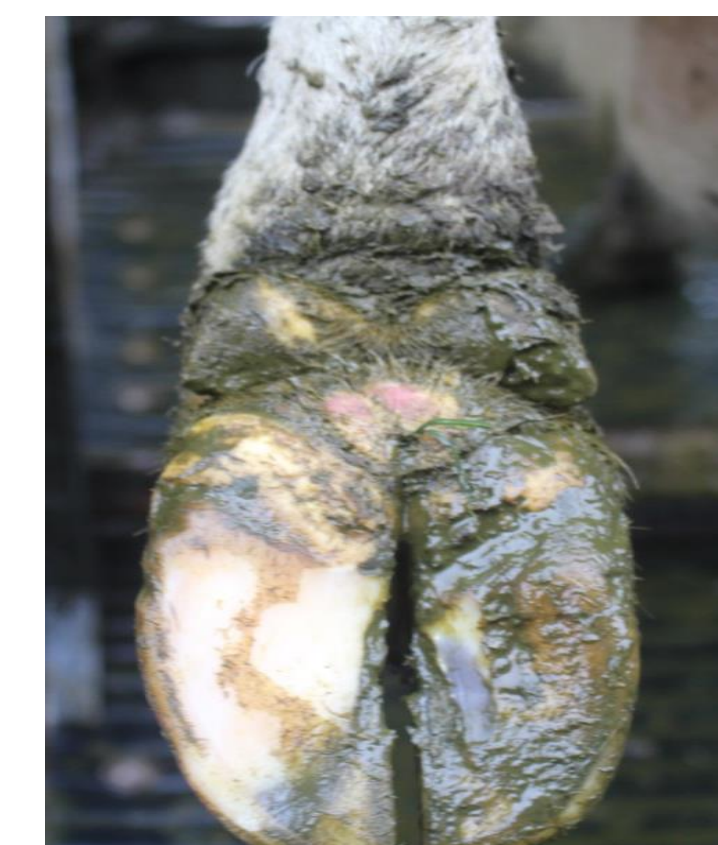
White line Disease



Sole Haemorrhage



Sole Ulcer



Digital Dermatitis

Consequences of Sub-Optimal Mobility

	Mobility Score 1	Mobility Score 2	Mobility Score 3
Milk Yield	-	↓115.3 kg	↓320.7 kg
Fat Yield	-	↓7.2 kg	↓14.2 kg
Protein Yield	-	↓4.8 kg	↓10.2 kg
SCC	↑ 0.6%	↑ 1.7%	↑2.2%
Calving Interval	-	↑3.6 days	↑6.3 days
Culling	↑ 20%	↑ 50%	↑ 90%



Reducing Sub-Optimal Mobility

- Routine mobility Scoring
- Routine claw trimming by a trained professional
- Regular maintenance of cow roadways
- Good cow flow

37% of dairy cows have Sub-Optimal Mobility

More than 80% of those go undetected

Take home messages

- Significant **production losses** associated with **Sub-Optimal Mobility**
- Early identification** of sub-optimally mobility cows is **key**