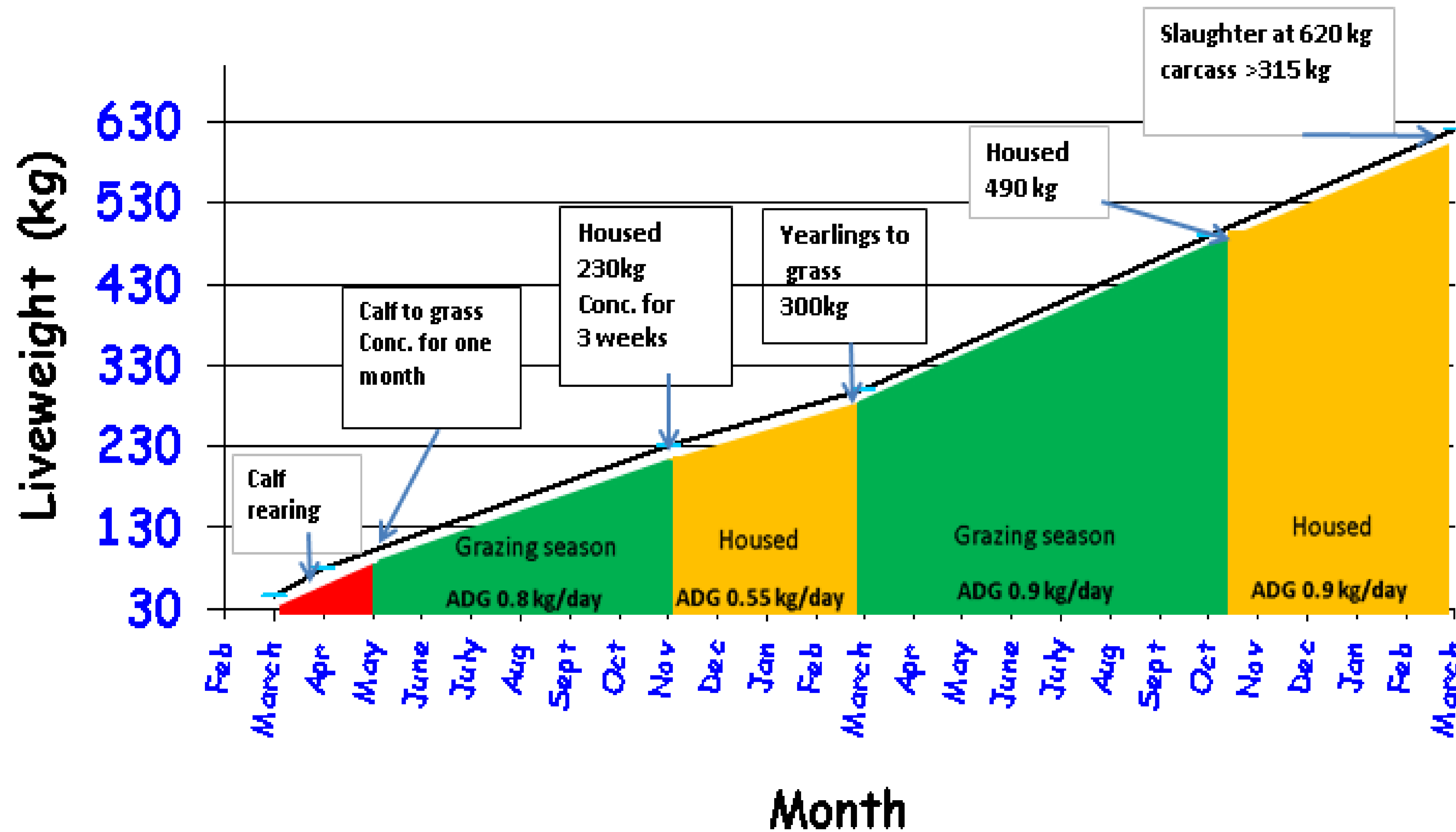


Ho/Fr 24 month steer system

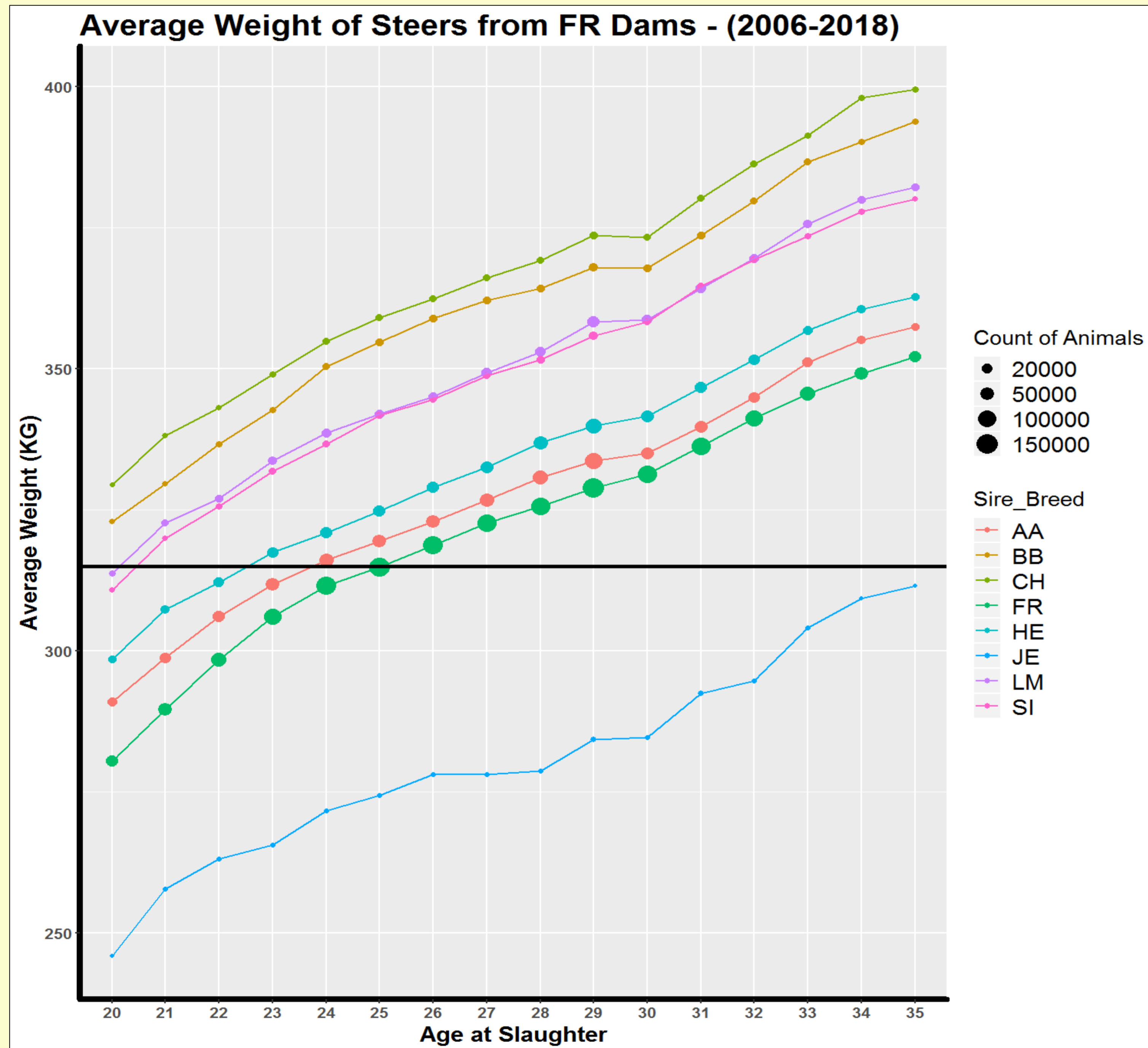


Spring-born calves: achieving the targets

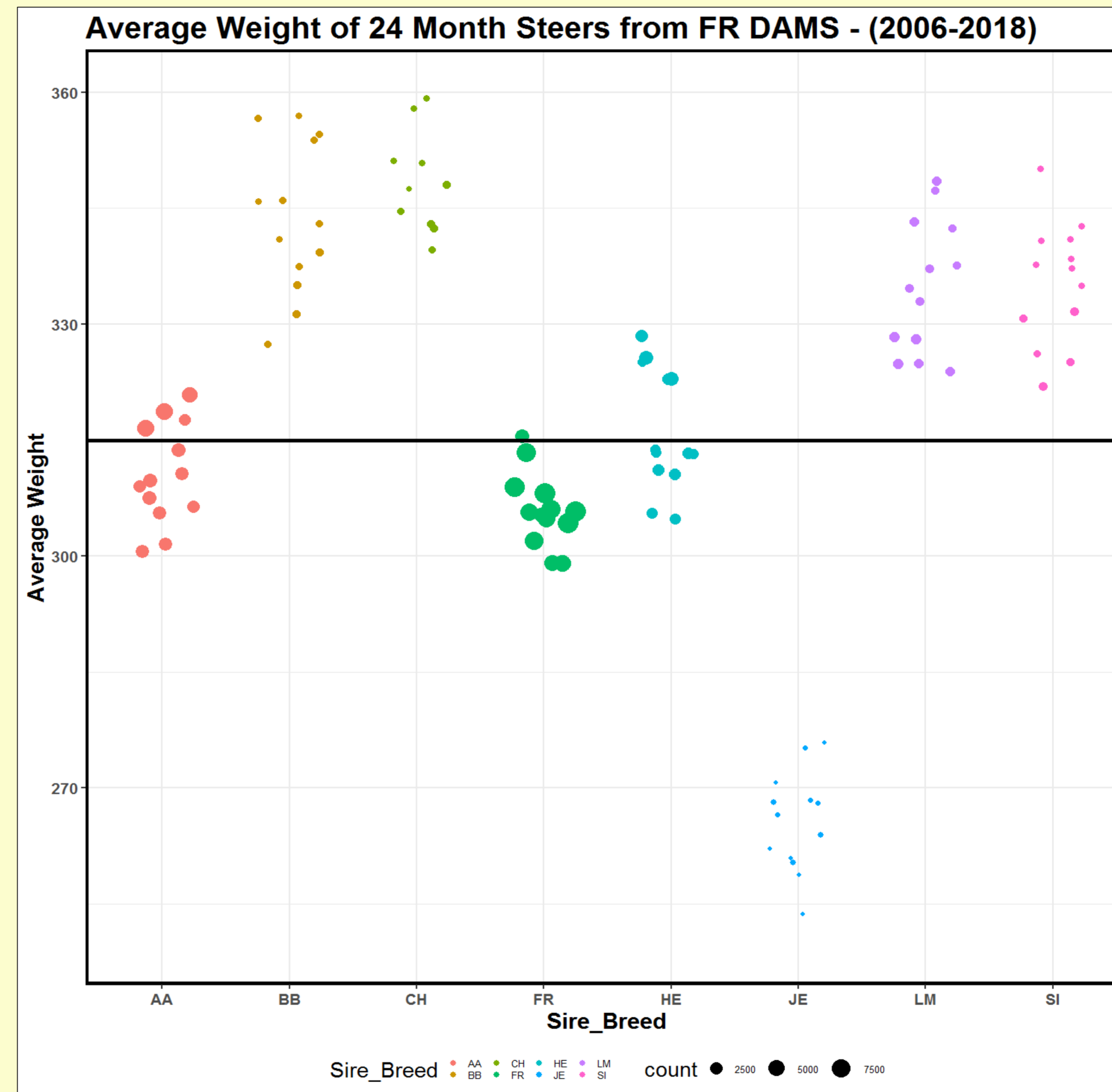
Your management is critical:

- It's all about animal performance and costs!
- Calf rearing
- Calf health
- Stocking rates
- Grassland management
- Silage quality and quantity
- Concentrate feeding
- Reaching carcass weights on time
 - All are critical
- Know your costs and returns

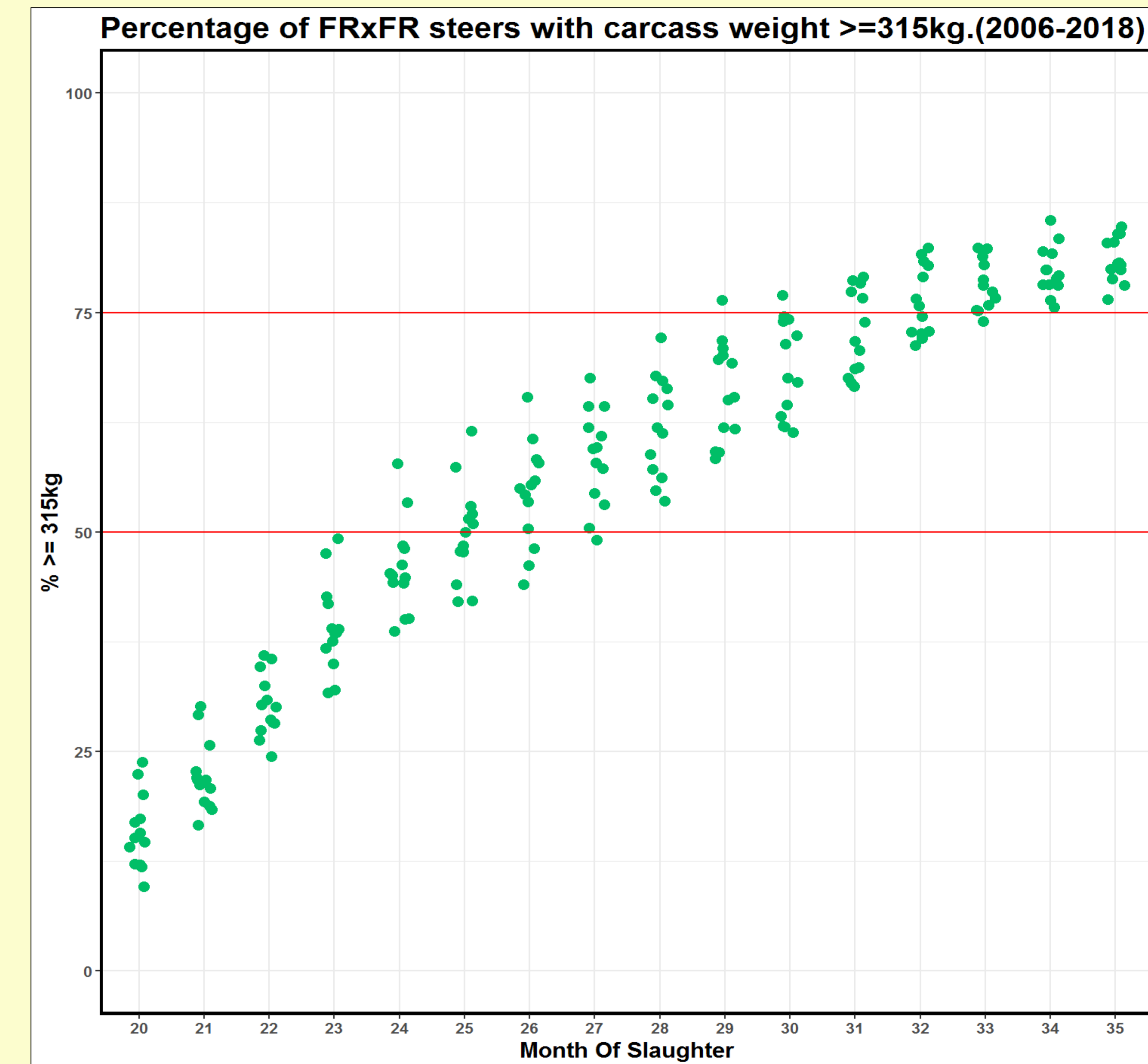
Nationally: what are we achieving?



- The average Ho/Fr steer not making 315 kg carcass at 24 months (306 kg)
- Other breeds ahead (except Jerseys x Ho/Fr)



- By 24 months, on average:
- Late-maturing crosses are >315 kg carcass
 - HE & AA slightly ahead of Ho/Fr



- Even at 35 months between 15-20% of Ho/Fr do not reach 315 kg carcass