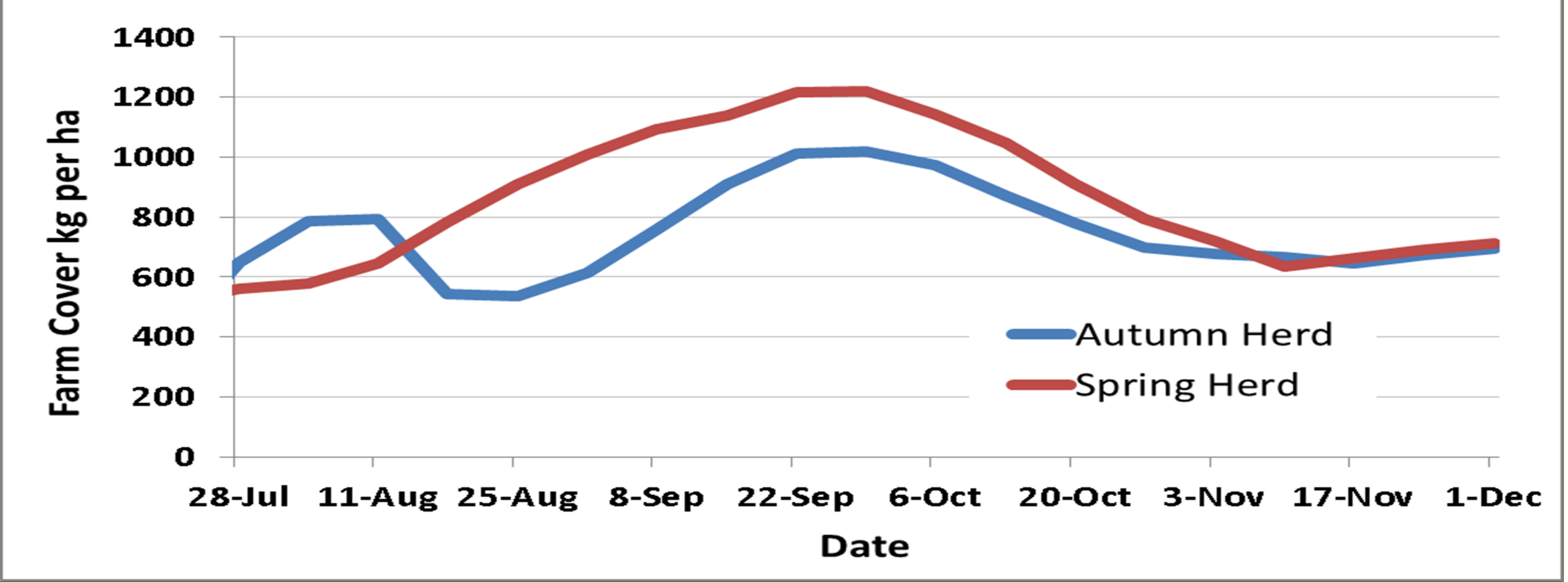


Grazing Targets for Winter Milk Herds

Autumn Grass Budget Targets



- Limit peak autumn cover to <1000kg DM per ha
- Max pre-grazing 1800kg DM on autumn grass
- Grass plus 5-6kg high UFL concentrate
- No silage in diet until late October if possible
- >80% closed early November
- Target early spring grass



Spring Grazing Budget

| Week Ending | Feb 7 | Feb 14 | Feb 21 | Feb 28 1/3 area grazed | Mar 7 | Mar 14 | Mar 21 2/3 area grazed | Mar 28 | Apr 4 | Apr 11 |
|---------------|-----------------------|--------|--------|---------------------------|-------|--------|---------------------------|--------|-------|------------------------------------|
| Grass | 5 | 5 | 5 | 10 | 10 | 10 | 12 | 14 | 14 | 14 |
| Conc. | 7 | 7 | 7 | 5 | 5 | 5 | 4 | 4 | 4 | 4 |
| Silage | 8 | 8 | 8 | 5 | 5 | 5 | 5 | 4 | 0 | 0 |
| Farm cover/ha | 900 <i>Opening</i> | 861 | 822 | 818 | 726 | 662 | 626 | 578 | 517 | 511 <i>(2nd Rot)</i> |

- Budget: Feb cover + SR + calving pattern + growth
- Start early: Aim 33% grazed by late Feb
- Graze minimum 5kg DM per cow each grazing bout
- Limit silage intake (eaten by 2am) to improve grazing
- Track area grazed per week v targets
- Farm cover >500kg DM per ha early April