

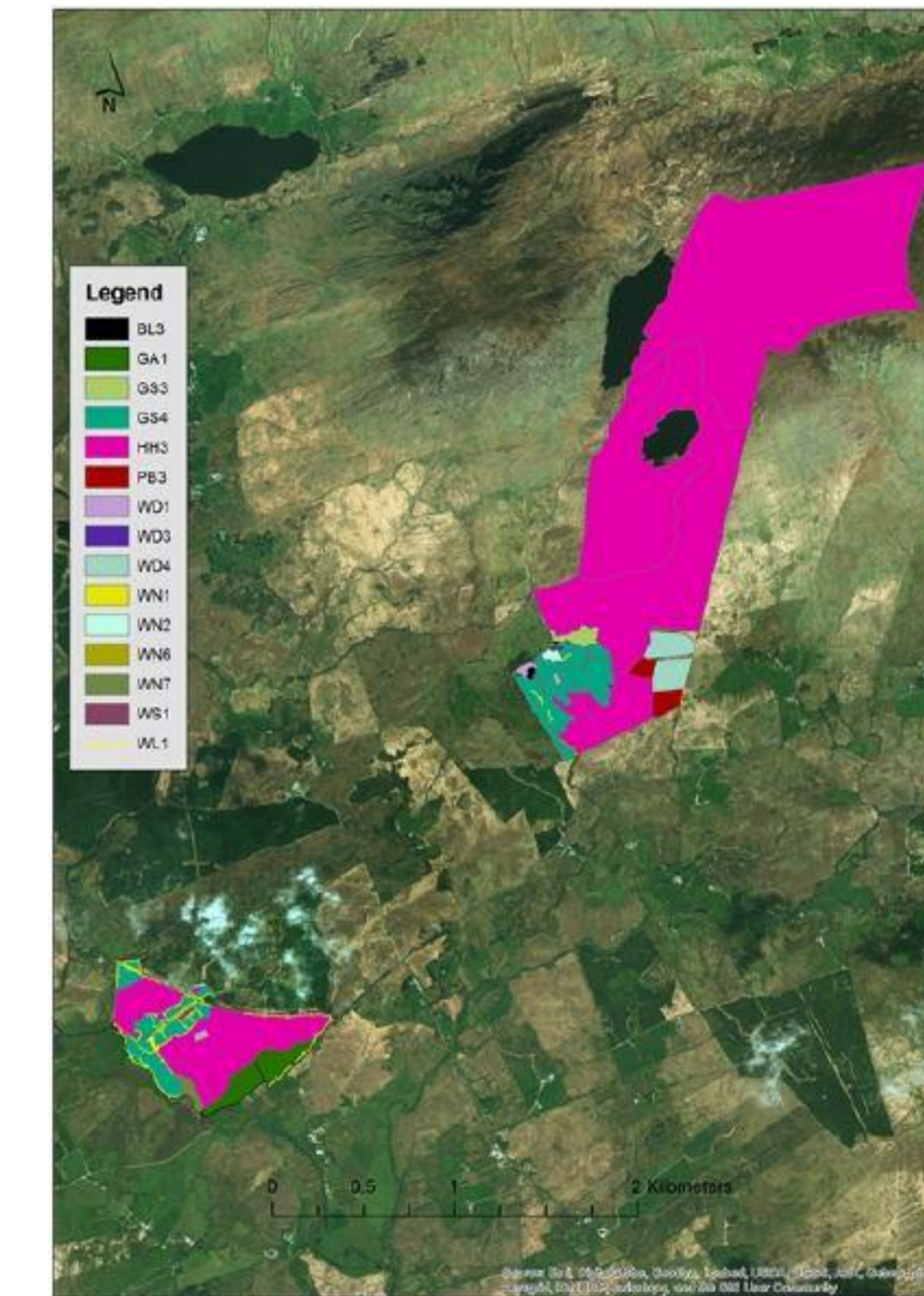
Code	Habitat	Area (ha)	Length (m)	Relative Wildlife Importance
BL3	Buildings / artificial surfaces	2.08		Generally low, but old farm buildings and yards can benefit bats/birds
FL4	Mesotrophic lakes	0.10		Very high
GA1	Improved agricultural grassland	64.41		Low, but can be mitigated by management, and by wildlife habitats in adjacent areas
GS3	Dry-humid acid grassland	3.71		High
GS4	Wet grassland	3.60		Medium - high. Can vary in quality, depending on management.
HH1	Dry siliceous heath	9.98		High- very high
HH3	Wet heath	8.00		High- very high
WD1	Mixed (broadleaved) woodland	0.40		Medium-high, management dependent
WD4	Conifer plantation	0.70		Low to medium
WS1	Scrub	2.13		Medium-high, management dependent

SELECTED PHOTOS OF HABITATS



Key messages

- Premium markets rely on sustainability credentials.
- Biodiversity is a key element of sustainability, but often ignored.
- Many Irish farms do not gain credit for habitats.
- Traditional methods require farm visits for survey work.
- Teagasc has collaborated with Bord Bia to develop farm habitat maps from aerial imagery.
- Two examples are provided...



Code	Habitat	Area (ha)	Length (m)	Relative Wildlife Importance
BL3	Buildings / artificial surfaces	0.26		Generally low, but old farm buildings and yards can benefit bats/birds
GA1	Improved agricultural grassland	7.18		Low, but can be mitigated by management, and by wildlife habitats in adjacent areas
GS3	Dry-humid acid grassland	1.86		High
GS4	Wet grassland	26.59		Medium - high. Can vary in quality, depending on management.
HH3	Wet heath	269.48		High- very high
PB3	Lowland blanket bog	3.18		Low-medium, management dependent
WD1	Mixed (broadleaved) woodland	0.96		Medium-high, management dependent
WD3	Mixed (conifer) woodland	0.13		Medium
WD4	Conifer plantation	6.62		Low to medium
WN1	Oak-birch-holly woodland	0.26		Very high

SELECTED PHOTOS OF HABITATS

