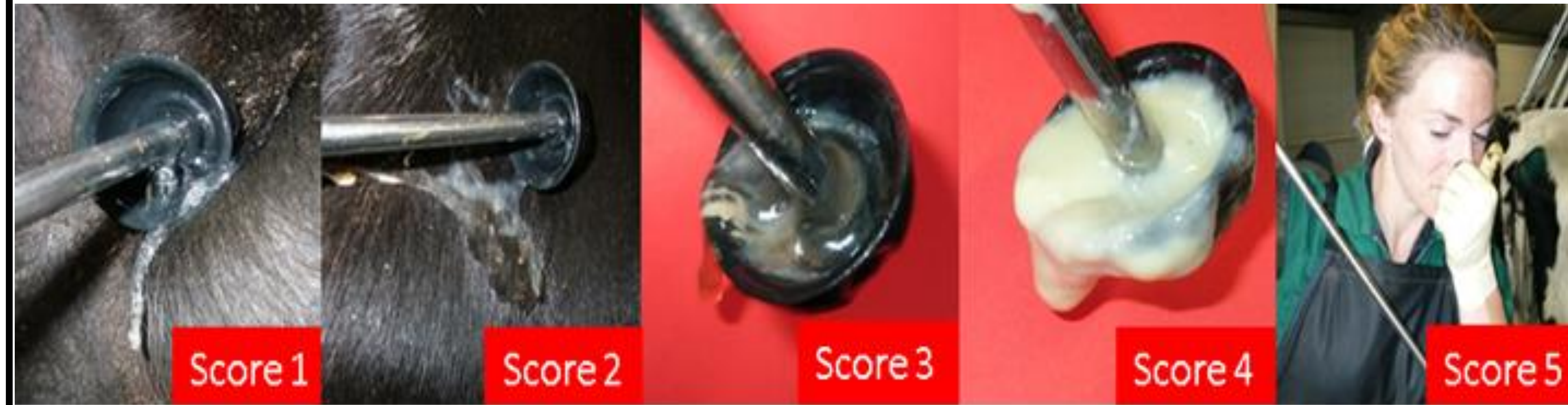


## Metricheck Scoring Chart



### At risk cows

- Difficult calving
- Twins
- Retained placenta
- Metabolic disease
- Dead calf
- Displaced abomasum
- Low fertility sub-index

### Treatment

- Cycling cows
- Metricure
- Prostaglandin
- Non-cycling cows
- Metricure

## Synchronisation Protocol for Non-Cycling Cows

Week	Mon (am)	Tues	Wed (pm)	Thurs (am)	Fri	Sat	Sun
1	P4 insert + GnRH						
2	P4 remove + PG		GnRH	AI			

### Take home messages

- Uterine infections → reduce cow fertility
- Metricheck → identify cows with infections
- Treat infected cows 3 to 5 weeks before MSD
- Non-cycling cows less fertile
- Tail paint/activity monitor → identify non-cyclers
- Synchronise non-cyclers → increase pregnancy rates
- Hygiene important