

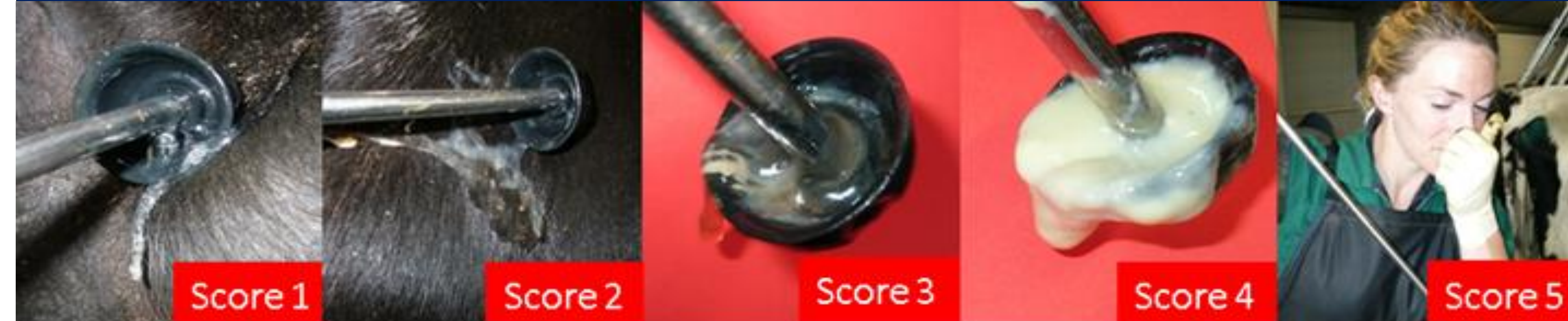
The Metricheck Process



Factors affecting score and treatment

At risk cows	Consequences	Treatment
<ul style="list-style-type: none"> ○ Difficult calving ○ Twins ○ Retained placenta ○ Metabolic disease ○ Dead calf ○ Displaced abomasum ○ Low fert sub-index 	<ul style="list-style-type: none"> ↓ submission rate ↓ 6-week in-calf rate ↓ final in-calf rate ↓ days in milk 	<p><u>Cycling cows</u></p> <ul style="list-style-type: none"> ○ Metricure ○ Prostaglandin injection <p><u>Non-cycling cows</u></p> <ul style="list-style-type: none"> ○ Metricure

Scoring Chart



Clear mucus with no pus = 1; mucus with flecks of pus = 2; mucus with < 50% pus = 3, mucus containing ≥50% pus = 4, mucus containing ≥50% pus and odour = 5;

Take home messages

- Uterine infections → reduce cow fertility
- Metricheck → identify cows with infections
- Treat infected cows 3 to 5 weeks before MSD