



Supply Chain Collaboration

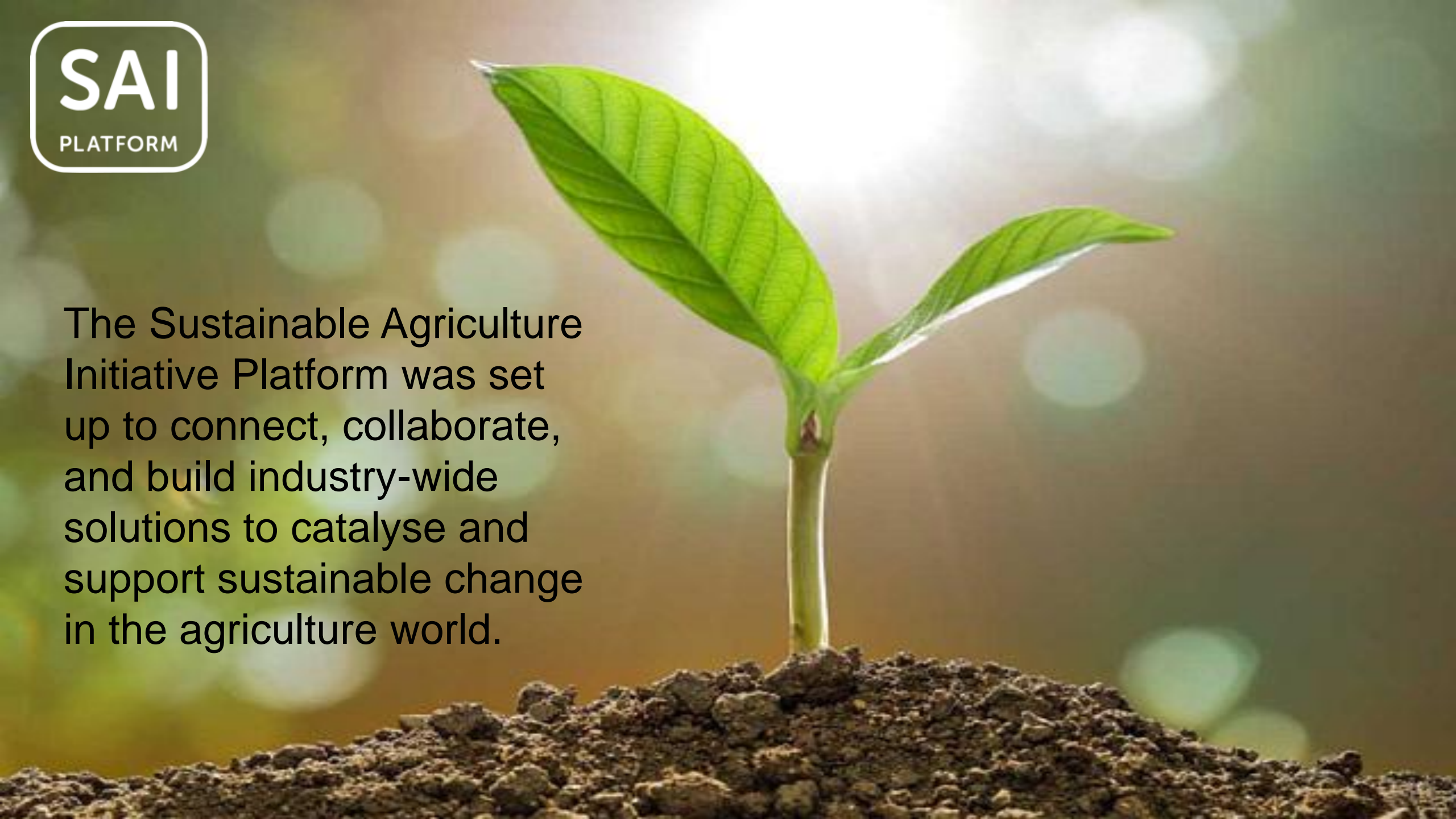
Making things happen

Sarah Haire
Chair ERBS

Dawn Meats Agricultural Strategy Manager



The Sustainable Agriculture Initiative Platform was set up to connect, collaborate, and build industry-wide solutions to catalyse and support sustainable change in the agriculture world.





VISION



A sustainable, thriving and resilient agricultural sector that protects the earth's resources, human rights and animal welfare, delivering value to our members and across our whole value chains.

MISSION



To harness the collaborative power of our members to accelerate widespread adoption of sustainable agricultural practices.

FULL MEMBERS*



AFFILIATE MEMBERS



*In SAI Platform statutes: 'Active members'

100+
members



Global and
Whole Supply Chain



Tools and
Guidance



Learning and
Sharing
at Pre-
Competitive



Working Groups &
Committees:
> Crops
> Dairy
> European Roundtable
for Beef
Sustainability



ERBS

European Roundtable
for Beef Sustainability



Who we are



Our vision

The beef European sector is recognized for delivering measurable positive impacts and continuous improvement towards key sustainability priorities



Diverse Production Systems & Stakeholders





Beef sustainability principles and practices

Sustainable Farming Systems

- Traceability
- Sustainability Management System for Continuous Improvement
- Site Selection
- Animal Feeding
- Inputs

Social Sustainability

- Human Health and Welfare
- Animal Health, Welfare and Genetics
- Human Rights
- Workplace Environment
- Business Integrity
- Worker Competence
- Landscape Management
- Community Investment

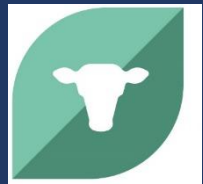
Economic Sustainability

- Biosecurity
- Long Term Economic Viability
- Short & Long term Business Planning

Environmental Sustainability

- Soil
- Grasslands
- Water
- Air
- Climate Change
- Waste
- Biodiversity
- Land use





Our focus areas

Beef Sustainability
Principles and
Practices



Consultation with
+/- 150 Stakeholders
in Europe

Animal Health and Welfare

Animal Medicines

Farm Management

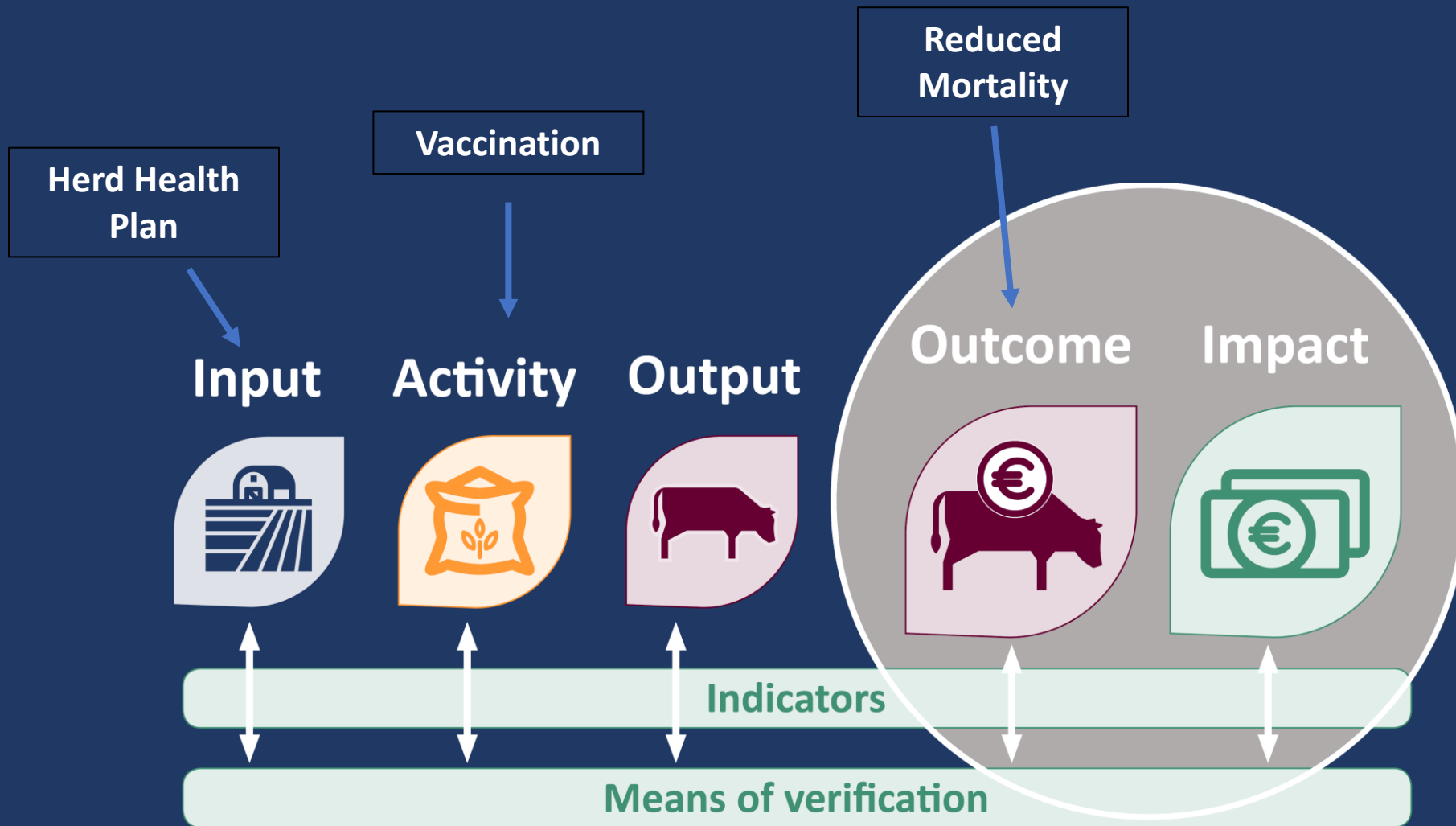
Greenhouse Gas Emissions



Outcome Measures



Our approach





ERBS Beef Sustainability Targets



Environment

Improve the Environmental footprint of farming systems

An intensity reduction of 15% in GHG emissions by 2025, with the aim of setting a future target that recognizes the positive role beef production can contribute to mitigating climate change through reduction strategies and sequestration



Animal Medicines

Preserve the effectiveness of animal medicines in beef farming

- *Total usage of antibiotics below 10mg/PCU by 2023*
- *Reductions of 50% in the use of HP-CIAs by 2023*



Animal Health and Welfare

Improve Animal Health and Welfare

- *Target mortality rates are below 1.5% (for systems with mortality rates above this target, a year on year reduction of 20% should be achieved)*
- *All animals have access to loose housing (when housed) by 2030*
- *All animals are given pain relief (analgesics) for all surgical procedures and for all forms of castration, dehorning and disbudding*



Farm Management

Improve the resilience of beef farming

- *A reduction in serious accidents of workers (reportable; ref: European Reporting Framework) on farm and a reduction in fatalities with an overall target of zero*
- *Financially viable farms that have a business plan in place*



Local Action

United Kingdom

Republic of Ireland

France

Italy

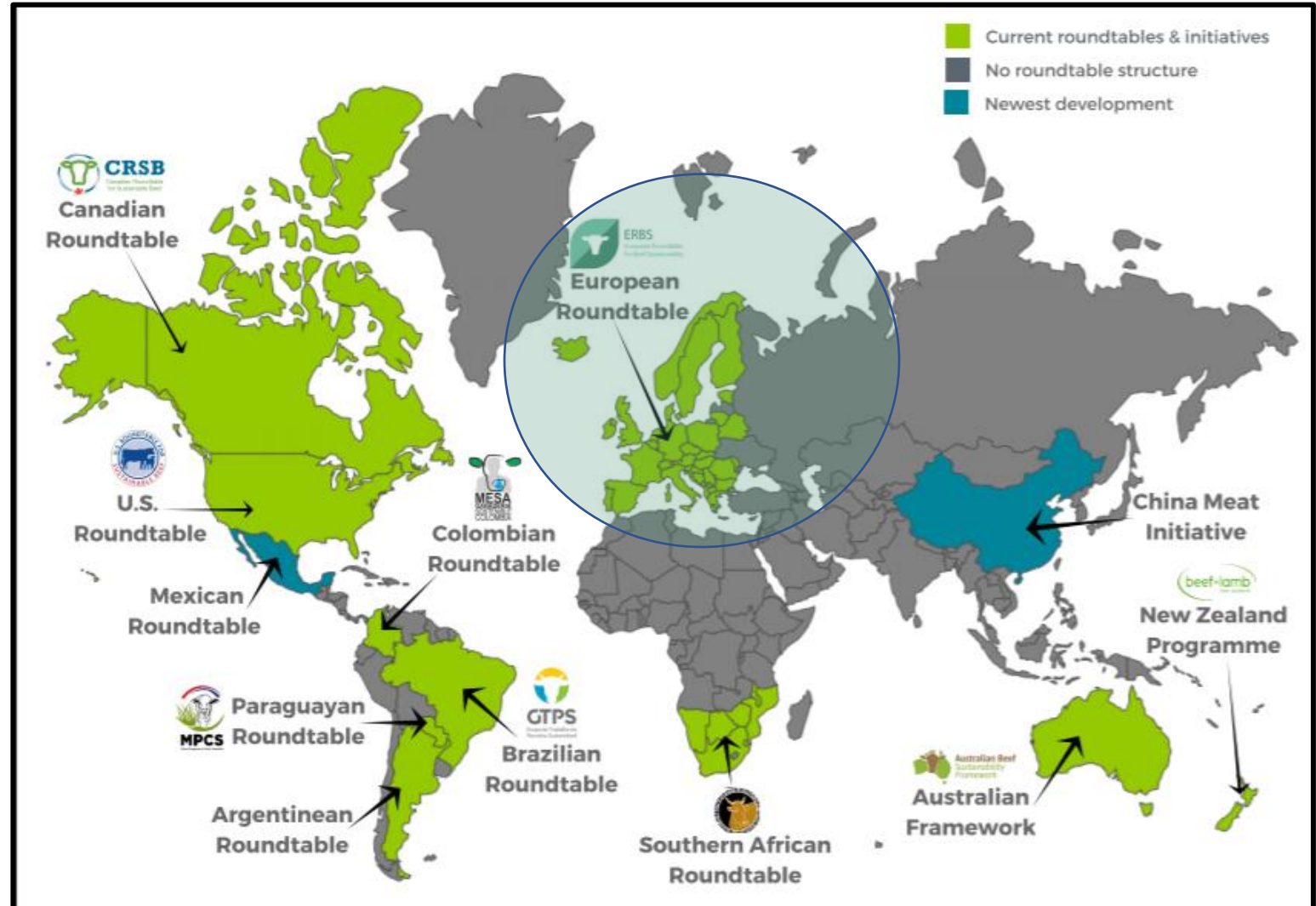
Germany

Poland





Global Roundtable for Sustainable Beef





Recognition Framework



ERBS
European Roundtable
for Beef Sustainability

8 ERBS Outcome
Targets

Country Platform Beef
Sustainability
Programmes

United Kingdom
Republic of Ireland
France
Italy
Germany
Poland



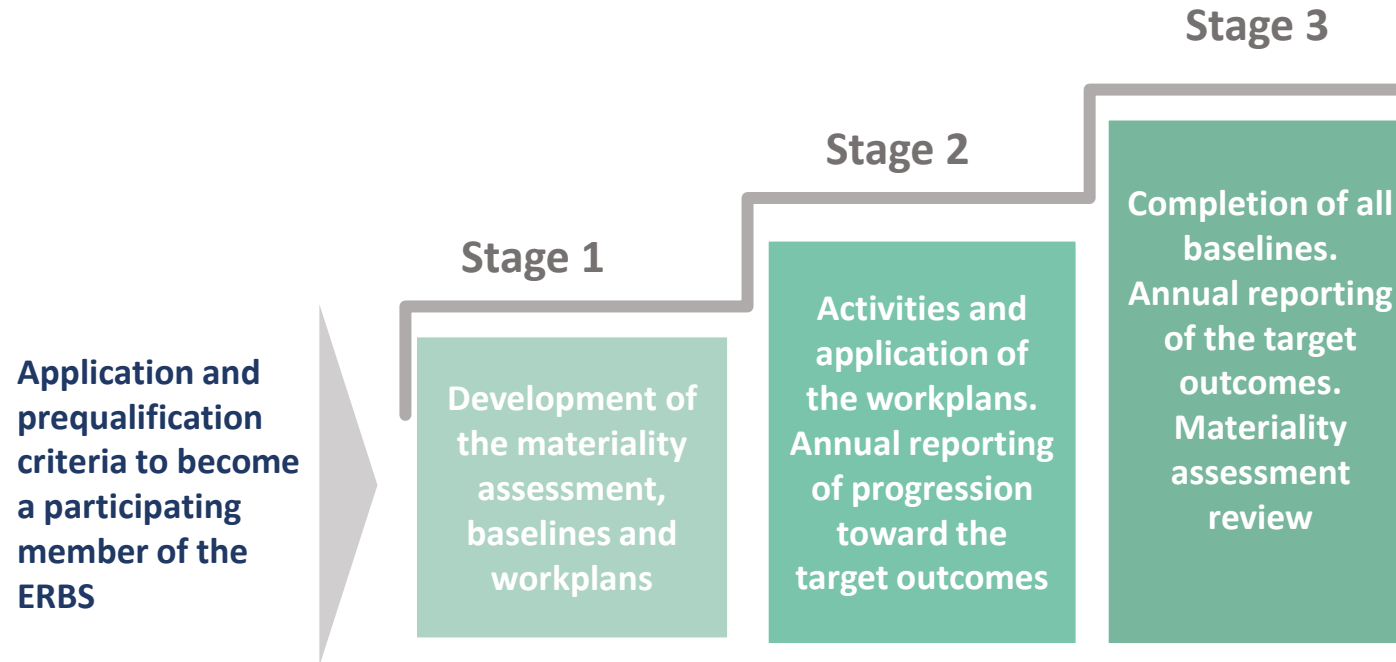
Recognition Framework

We need a framework for ERBS to be able to recognise established Country Platform Programmes that are committed to working towards achieving the ERBS Outcome Targets in their country

Companies sourcing beef
from Country Platform
Beef Sustainability
Programmes



The Beef Framework



ERBS OUTCOME TARGETS
GRSB



Platform approaches

Numerous factors determined the approach countries took for their country platform

- Is there a programme already in place?
- Willingness to include sustainability topics?
- Maturity as a country in sustainability?
- Data availability?
- Number of members?





The Future

- Country Platforms
 - Demonstrate progress on targets through Annual reports
 - Collaborate on individual outcomes to drive change
- Develop membership and country platforms
- Continuous development of Outcome Measures
- Tackling key sustainability issues together

