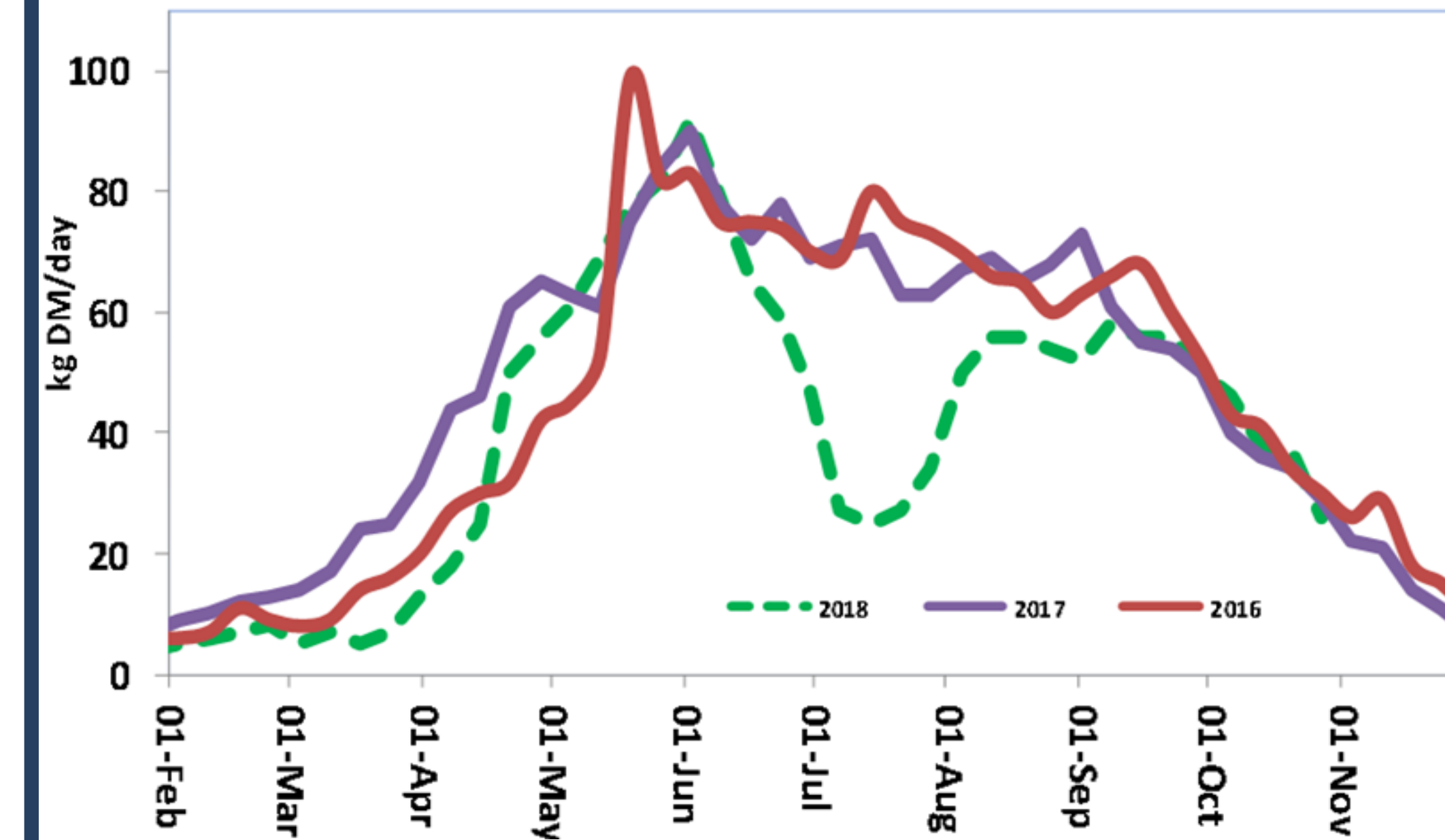


## Introduction

- Optimal stocking rate: match demand to growth
- 5.5 t DM forage tonnes grown per cow
- Reserve required to deal with shocks to growth
- Scale of feed reserve depends on relative risk

## Annual Pasture Growth



- Deficit 3 t DM/ha 2018
- More than 1 t DM/cow
- All extra feed used for hi-performing stock
- Aim to reserve at least 50% of potential deficit

## Effect of stocking rate on forage balance

Feed per cow	Milking platform stocking rate						
	2.2	2.5	2.8	3.1	3.4	3.8	4.2
Silage made kg DM	2000	1490	1100	790	540	179	140
Silage balance kg DM	598	82	-306	-658	-1023	-1414	-1538
Concentrate kg	670	720	810	950	1041	1159	1320

- At 15.5 t DM grown, importing silage from >2.5 SR
- Feed reserve needs to be calculated separately

Purchase per tonne DM

High quality 70+ DMD

Assessing feed reserve options

Storage and handling

Repeatability

## Take home messages

- Optimal SR and feed reserves: separate issues
- Reserve of 500 kg DM per LU, depending on risk
- 100% reserve should be good quality (>70 DMD)