



Spring barley disease control



Rhynchosporium



Ramularia



Net Blotch



Mildew

Fungicide Timings?

- Late tillering – protect tillers
- GS49 (awns peeping) – protect green leaf
- Loss of up to 0.4 t/ha if left until GS59 (ear fully out)

What to use?

- Use mix of actives
- 50% rate of each sufficient
- Triazole + SDHI/strobilurin
- CTL for Ramularia a must!

Notes: _____



Managing Ramularia

Control of Ramularia post-CTL

- Potential to significantly reduce yield & quality
- What alternatives available for control?
- Do varieties have a role to play in disease management?



Alternative Chemistries

- Chlorothalonil not permitted after May 2020
- Alternative multisite fungicides?
- New fungicides on the horizon

Future Programmes

- Varietal resistance?
- New/alternative chemistries to CTL?
- Accurate fungicide timing essential

Notes: _____



Teagasc/Boortmalt Malting barley development programme



Program Objectives



Improving profitability of malting barley production—Comparable to winter wheat



A targeted knowledge transfer program for latest Teagasc research tailored to each region



Increase nutrient management planning and use



Deliver more brewing and distilling barley delivered per farm within specifications



How will I see the program?

- Increased information flow
- More malting barley events
- Workshops on specific topics
- Increased support for discussion groups
- Contact point for technical assistance

Meeting the Objectives

- Dedicated advisor (Eoin Lyons) for 3 years
- Use Monitor Farms and crops in different locations to track progression
- Working intensively with Teagasc and Boortmalt discussion groups



Contact: Eoin Lyons Teagasc,
Enniscorthy, Co. Wexford

Phone— 087-9859894

Email— eoin.lyons@teagasc.ie

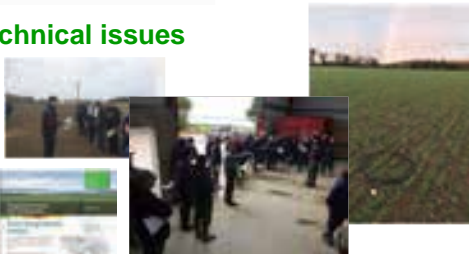
Notes:



Progress to date

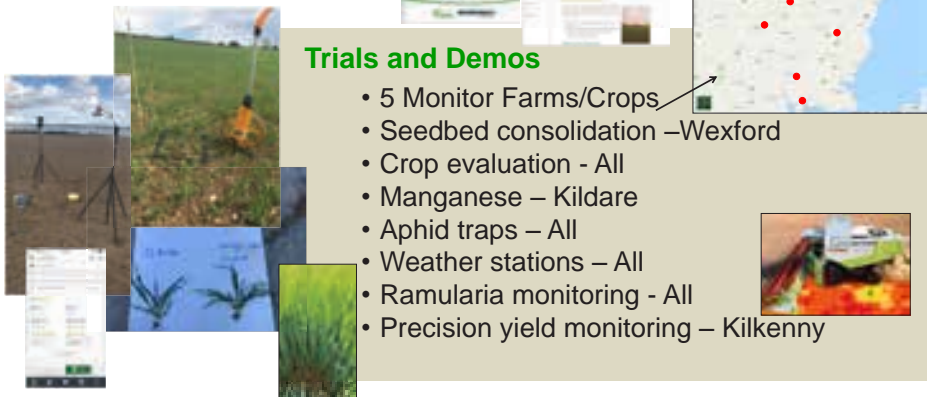
Improved communication of technical issues

- Crop Walks
 - Winter Malt
 - Spring Malt
- Newsletters/technical bulletins
- Website



Trials and Demos

- 5 Monitor Farms/Crops
- Seedbed consolidation –Wexford
- Crop evaluation - All
- Manganese – Kildare
- Aphid traps – All
- Weather stations – All
- Ramularia monitoring - All
- Precision yield monitoring – Kilkenny



Notes: _____
