

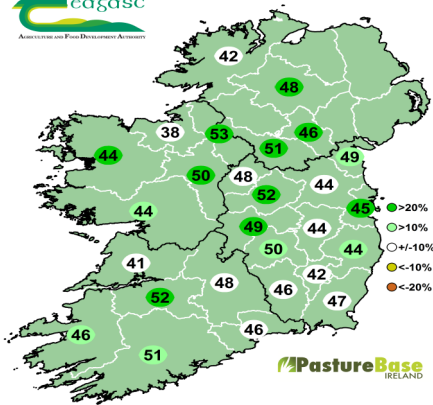
28th September 2021

## PastureBase data from dairy farms:



AFC	Cover/LU	Stocking Rate	Growth	Demand	Diet (Grass + Supplement)	Pre Grazing Yield
995 Kg DM/Ha	338 Kg DM/LU	3 LU/ha	52 Kg DM/ha	44 Kg DM/ha	14 Kg DM + 4 Kg	2223 Kg DM/Ha

Grass growth measurement  
Today's grass growth (kg DM/ha/day)



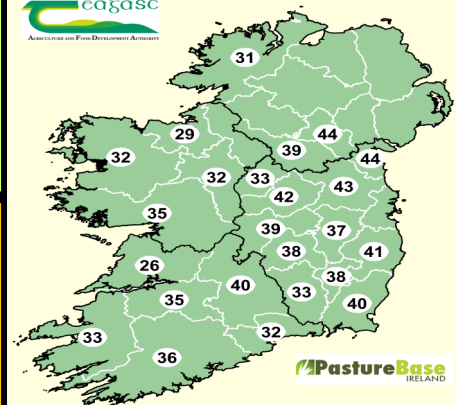
On the left: counties map showing **current** grass growth rates over the last week.

On the right: counties map showing **predicted** grass growth over the next 7 days from farms involved in Elodie Ruelle's MoSt grass growth model (55 farms).

### Predicted Growth Rate:

Ballyhaise 37 kg DM/ha  
Wexford 40 kg DM/ha  
Athenry 32 kg DM/ha  
Clonakilty 37 kg DM/ha

Grass growth predictions  
Next week (kg DM/ha/day)



## Good ground conditions help grazing in the South East

Brendan & Mary Sheridan farm just outside Dungarvan in Co. Waterford, milking 149 cows on a 49 Ha milking platform which is dry & free draining soil.

"September has been a dream, one of the most settled months of the year with good grass growth and excellent graze outs. My farm cover built to a peak of 1154 Kg DM/Ha about 2 weeks ago and is back to 1031 Kg DM/Ha today. Growth has dropped back to 47 Kg DM/Ha which is where my grass budget estimated it would be for the 1st week of October."

"With the wet weather over the weekend & low dry matters % in the grass, my cows yield suffered so I introduced 2 kg of maize silage at the feed barrier at milking & the cows are more content & performance has increased again."

"My farm is quite dry & I plan to start closing paddocks from the 10th October with a plan to have an AFC of 650 Kg DM/Ha on the 1st December."

"The cows are currently milking 19 Kg @ 4.63% Fat and 3.74 % Protein, 1.6 Kg Milk solids per cow and getting 2 kg meal."

"I have over 100 tonne of lime spread this year with the aim to continue to maintain & improve the pH in paddocks on my farm."



### Sheridans PBI Data

AFC	1031 kg DM/ha
Cover/LU	341 kg DM/cow
Growth	46 kg DM/ha/day
Demand	42 kg DM/ha/day
PGY	2250 kg DM/ha

### Grass Dry Matter %

Moorepark: 12.8% (1450 Kg DM/Ha)

Ballyhaise: 11.4% (1600 kg DM/Ha)

Athenry: 10.5% (2200 kg DM/Ha, Grass-Clover, Very Wet)

Grange: 13% (1450 Kg DM/ha)

## Grass10 Grazing Tips for the week:

Grass growth reducing, AFC is dropping. To ensure you have enough grass next spring whilst extending grazing this autumn:

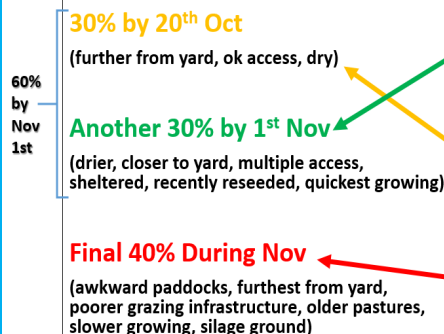
- Walk the farm weekly monitor AFC vs. grass budget on PBI
- Complete and follow the autumn rotation planner on PBI
- Identify which paddocks to close first, middle and last, (see diagram on right).
- In wet conditions, consider skipping to graze lighter covers for better utilisation (4cm residual). Use 12hr stripwires & backfence.



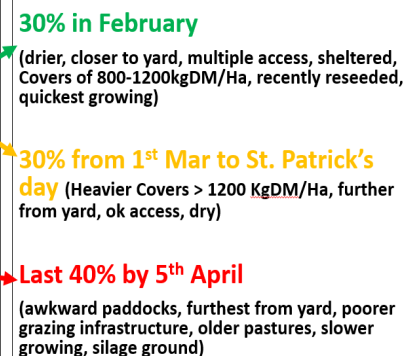
## Picking Your Paddocks to Graze



### ..For The Autumn Rotation Plan



### ..For The Spring Rotation Plan



\*Heavy Farm targets for autumn should be 7 - 10 days earlier and for the spring 7-10 days later.

28th September 2021

**PastureBase data from sheep & beef farms:**

AFC	Days Ahead	Stocking Rate	Growth	Demand	Pre Grazing Yield
939 Kg DM/Ha	30 days	2.1 LU/ha	42 Kg DM/ha	31 Kg DM/Ha	2093 Kg DM/ha

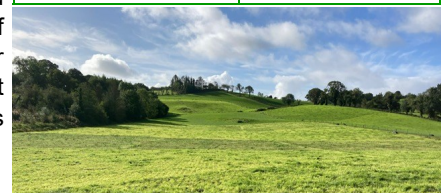
**Ballyhaise Research Farm Update - Donal Patton & Barry O'Reilly**

Ballyhaise entered a year of new experiments this year focusing on the benefits of grass-clover swards, the transition from grass-only to grass-clover swards, and the nitrogen surplus on the farm. There are four grazing treatments currently on the farm; grass-only on high concentrate (HC) - being fed 1,200 kg meal per cow, grass-clover on HC, grass-only on low concentrate (LC) - being fed 600 kg meal per cow, grass-clover on LC.

30% of the grass-clover treatments were fully reseeded with grass and clover seed (14 kg/ac; 12 kg grass + 2 kg clover). An additional 20% was stitched with clover seed (2.5 kg/ac clover seed). These paddocks received 3 bags/ac 10-10-20 at re-seeding plus 1 bag 0-10-20 after the first grazing. Nitrogen fertiliser was avoided to promote the establishment and growth of clover in the sward.

Ballyhaise AFC is running about 150 kg DM/ha ahead of the grass budget due to high grass growth in September. The final closing rotation began last week and grass supply will make it challenging to hit 70% grazed by Nov 1st as there is a lot of grass on the farm. The first paddocks closed will carry the most grass over the winter and be grazed around mid-March next spring. The first paddocks to graze next spring will be closed from the 10-15th October. The target closing AFC on Dec 1st is 800 Kg DM/ha.

Grass-Clover LC treatment	Performance
AFC	1300 kg DM/ha
Cover/LU	520 kg DM/LU
Growth	48 Kg DM/ha/day
Demand	36 Kg DM/ha/day
PGY	2,600 Kg DM/ha
Area Closed (Target by Nov 1st)	12% (70%)
Meal	3 kg
Milk Yield/Cow	14 L (1.3 Kg MS)



**GFOY Update: Thomas Hogan - Cattle (Suckler) Category Winner**

"Ground conditions are still fairly good here, as we are on dry soils. We're currently grazing the last of the heavy covers at 2,000 kg DM/ha."



"All the cows and calves graze on an outblock. At the moment I am weaning calves and the cows are being brought back home. This means the weanlings can remain there until the end of November or early December if the weather is OK. I hope to close there with an AFC 650 kg DM/ha at that stage."

"Both male and female calves have each done 1.3 kg average daily gain (ADG) since birth."

Rotation No.	7
AFC	954 Kg DM/Ha
Days Ahead	20
Growth	58 Kg DM/Ha
Demand	47 Kg DM/Ha
Stocking Rate	3.1 LU/ha
PGY	2000 Kg DM/Ha
Tonnage YTD	10.3 T DM/Ha YTD

**Upcoming Beef and Sheep Webinar**

Join us next Thursday evening for our next webinar focusing on the closing rotation on beef and sheep farms. This webinar will benefit you and your farm because you will have the **right amount of grass on your farm next spring; and you will have the right covers of grass in the right paddocks.**

Register for our webinar at: <https://bit.ly/G10webinars>



## Taking Control of Grass Supply on Beef & Sheep Farms

Having the Right Grass in the Right Place Next Spring

Thursday, 14<sup>th</sup> October | 7pm

Join the Grass10 & PastureBase team as they discuss:

- How correctly managing your final rotation ensures grass availability
- Deciding when to close paddocks on your farm
- How Teagasc grazing tools can aid with the final grazing rotation
- Autumn grazing tips from the Grass10 team

Suckler Farmer Trevor Boland from Co. Sligo and Sheep farmer Tomas O' Leary from Co. Kerry will join us on the night to discuss how they maximise days at grass in the autumn while keeping grass for priority animals for the spring

For more info visit [www.teagasc.ie/grass10](http://www.teagasc.ie/grass10)