

Better Margins, Better Birds, Better Lives.

Iamus: Using Technology to Deliver
Happier, Healthier Chickens & Growers

Teagasc Ballyhaise College: October 10 2022



PRIVATE AND CONFIDENTIAL – NOT FOR DISTRIBUTION

Multi disciplinary team to address customer problems.....



Shane Kiernan

CEO and Founder

- Serial Agtech entrepreneur, Fulbright Scholar Harvard University
- Deep connection with major players in poultry industry
- CEO and Founder of Sustansiya in the Philippines & Tomato Jos in Nigeria
- Investment experience at Deutsche Bank, BlackRock, the IFC and the Gates Foundation



Owen Grogan (VP of Engineering)

- Specialties in 3D Visualization and Machine Vision
- Software Team Lead at Tomra Sorting Solutions
- MSc Computer Science, University College Dublin



Thibaut Remark (Software Engineer)

- Specialties in Computer vision and robotics
- Software Engineer at Tomra Sorting Solutions



Brian Martin (Mechatronics Engineer)

- Holds a BSc. in Astrophysics from Dublin City University
- Previous engineering roles at SAP, Tomra Sorting Solutions and Orly Technology

..Supported by 400+ years of sector and operational experience.



Vincent Carton
Investor & Advisor

- ⦿ MD of Manor Farm
- ⦿ Board Member of Scandi Standard



Breccene Ennis
Investor & Advisor

- ⦿ MD of A.W. Ennis
- ⦿ MSc in Animal Nutrition



Dr. Aidan Leek
Poultry Technical Specialist

- ⦿ PhD in animal nutrition
- ⦿ Former Poultry Technical Manager Cargill (UK)



Justin Carton
Investor & Advisor

- ⦿ Director, Manor Farm
- ⦿ Operations advisor



HT Fish
Investor & Advisor

- ⦿ McKinsey & Company
- ⦿ Cargill, Inc
- ⦿ Stanford PhD



Jenny Lawton
Investor & Advisor

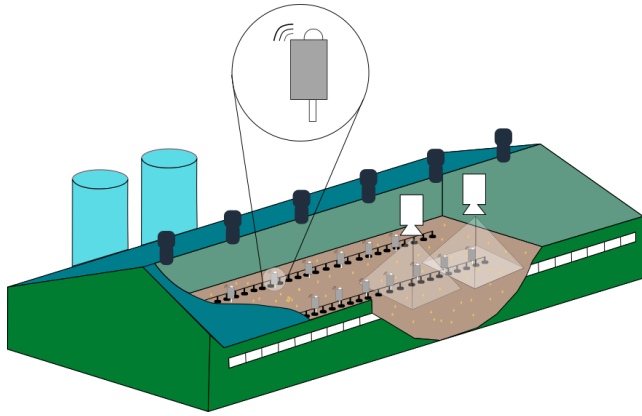
- ⦿ EVP, Bolster
- ⦿ COO, Techstars
- ⦿ Founder, Old School Ventures

How do I get to problems before they occur?

- ▶ **Understanding Bird Behaviour & Welfare**
 - "What is behind my birds acting this way?"
- ▶ **Grower Work/life balance**
 - "The minute I leave the shed any number of birds could die...I might not be back in the shed for 12 hours. It's hard to sleep soundly at night"
- ▶ **Labour Effectiveness**
 - How to empower farm staff with the tools to be effective?
- ▶ **Biosecurity**
 - Catastrophic disease threats ever present, how to reduce risk of spreading disease?
- ▶ **Sustainability**
 - How can I use feed & energy resources efficiently while growing birds?

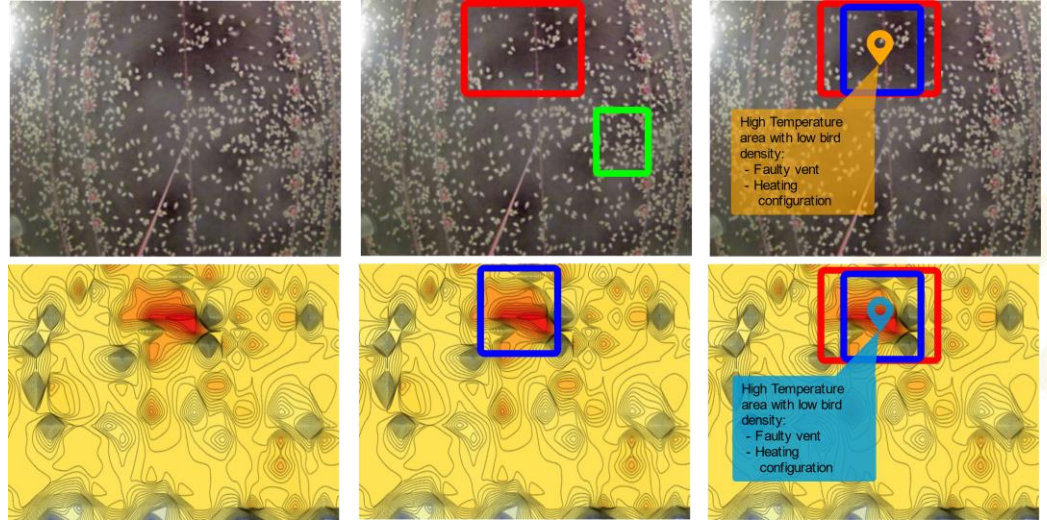


Currently – Predictive insights possible with machine vision & IoT



Our Hardware

- Proprietary Static Sensors
- ~100 sensors per shed
- ~ 40 Cameras covers every sqm of the shed



Our Software

- Vision & Environmental data layered to identify and predict problem areas and concerning bird behavior
- User defined thresholds and alerts give control and piece of mind to growers
- Biosecurity improves with less time spent in the shed

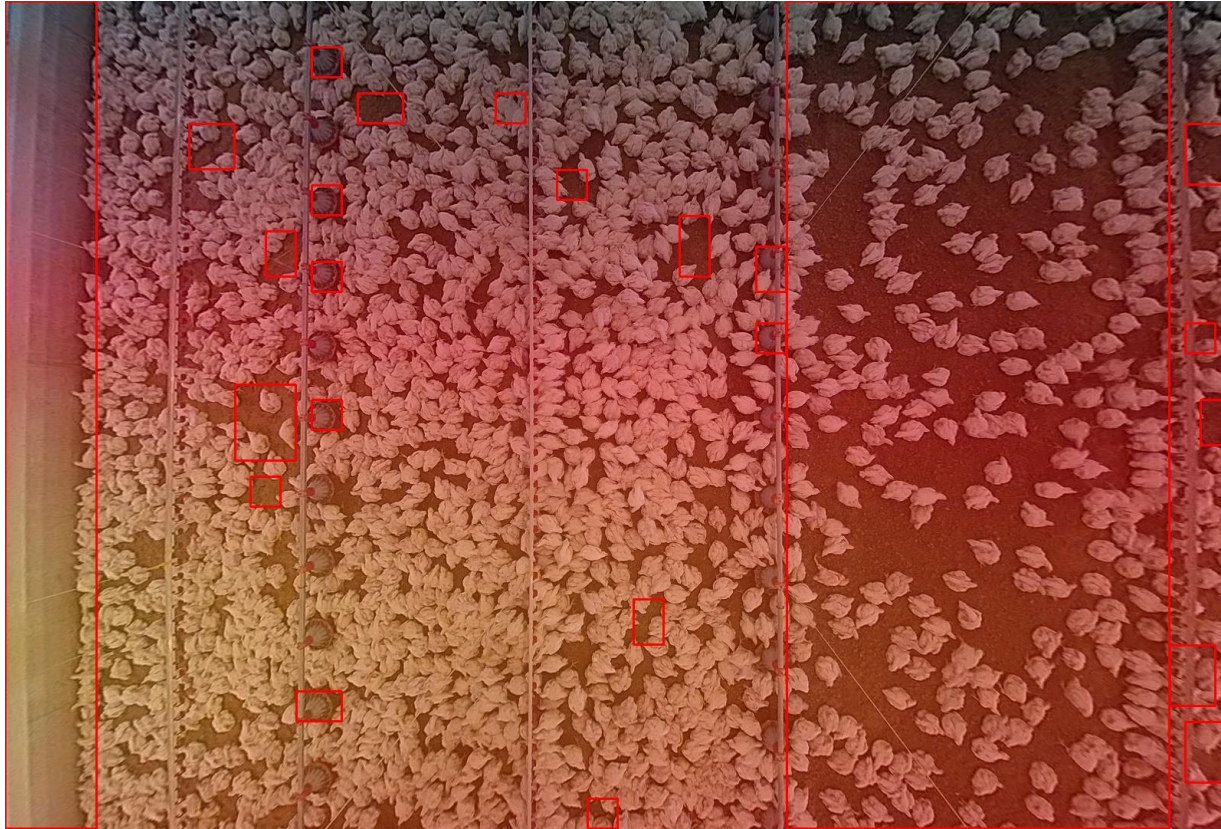
Real time monitoring – Every Sq Ft, Multiple variables, always observing behavior



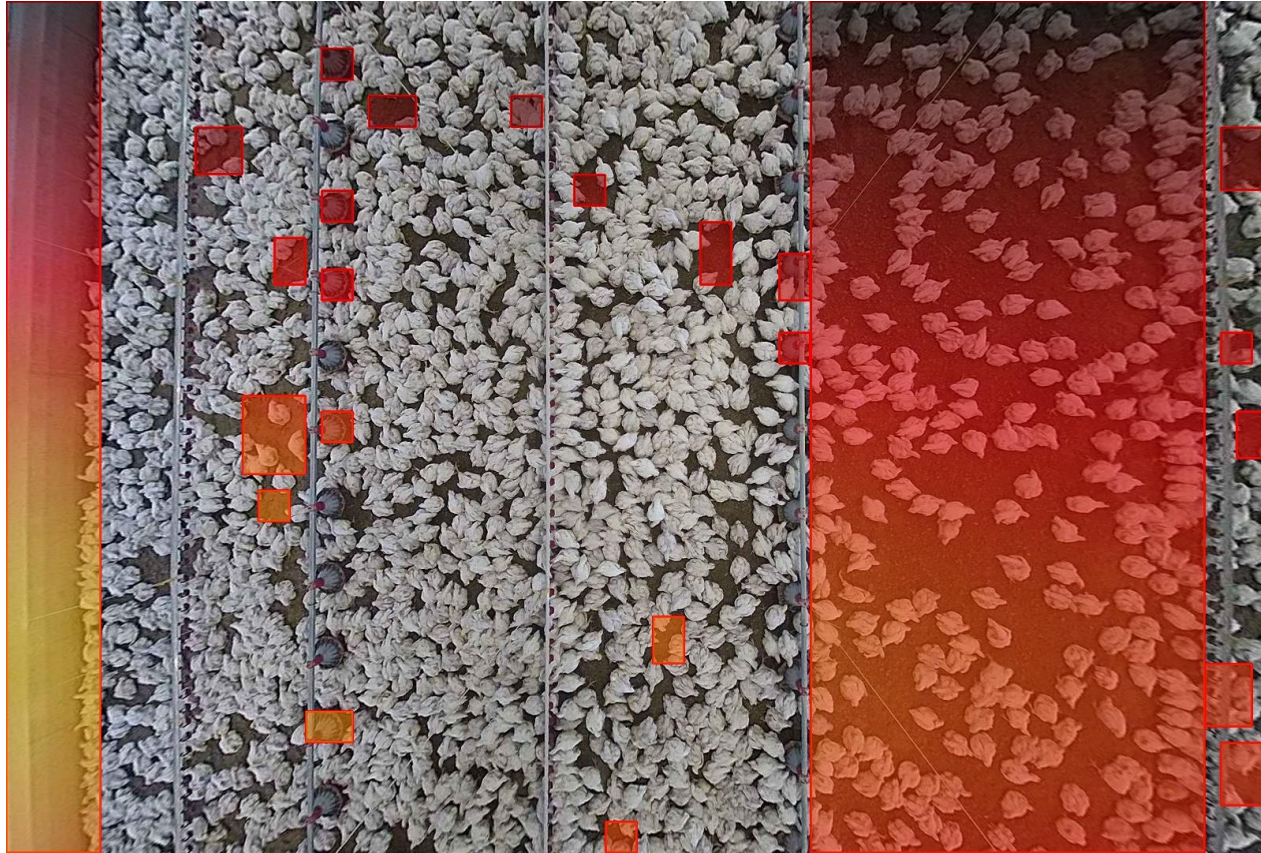
Example – Real time temp mapped on top of the animal behavior



Example – Real time temp mapped on top of the animal behavior



Example – Currently areas of interest alerted for attention



Questions For Discussion

- What do you think are the direct & indirect benefits for farmer / processor / adjacent of our technology?
- What do you think are the opportunities with your business for our technology?
- How would you think about integration our solution into your existing setup/product/service lines?
- We are interested in working with growers over the next year to further refine the product

**Better Margins,
Better Birds,
Better Lives.**

Thank you



iamus Technologies ©2022.

This information in this document is proprietary and confidential. Please note that any use or circulation of this document is strictly prohibited.