

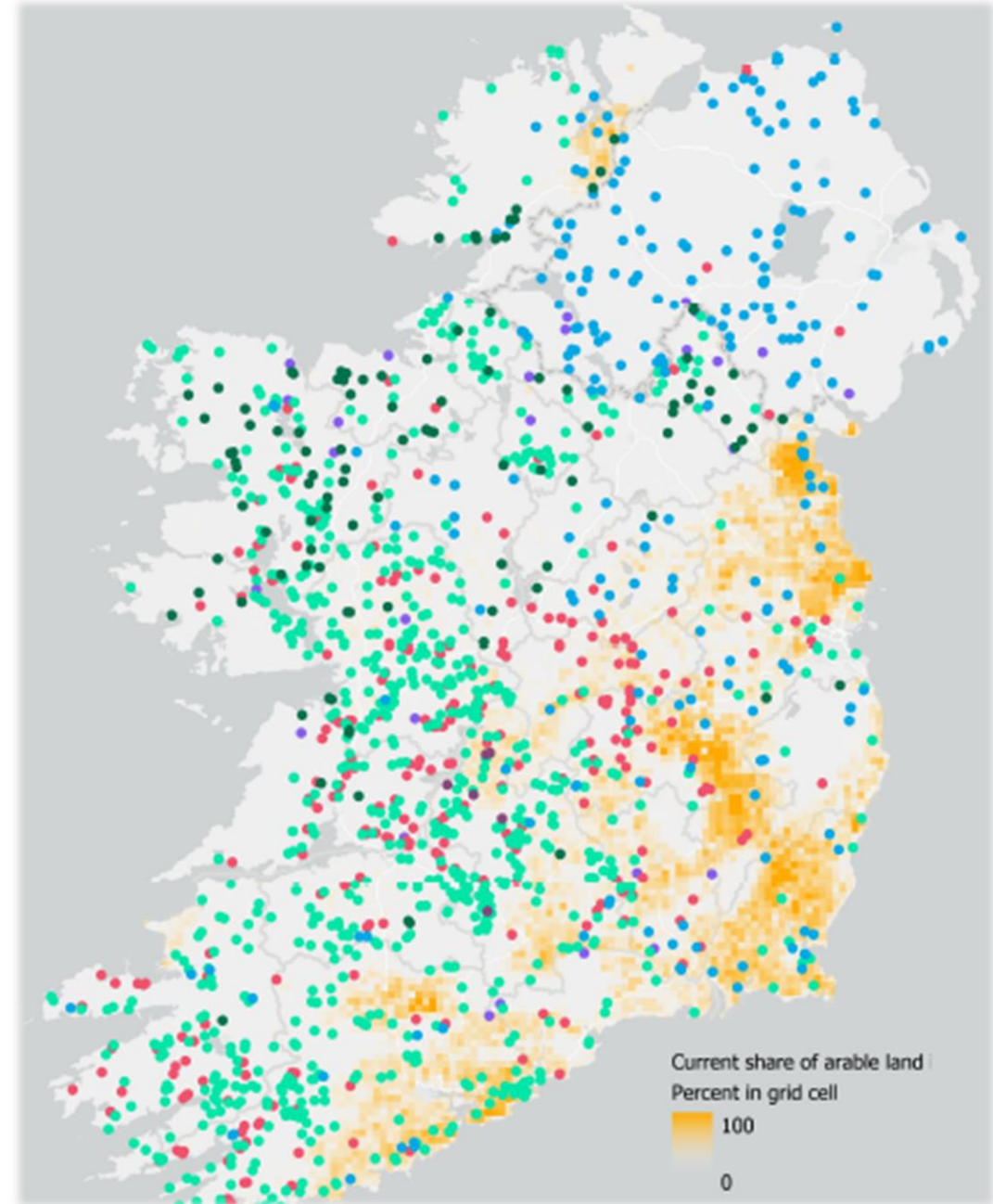
Feeding for Extra Profit

Emer McCrum, Michael McKeon, Gerard McCutcheon



Traditionally

- Small tillage area ~12 %
- We import approx. 50% of cereals for pig diets
- Try to maximise efficient use of imported grain
- Targeted growth rates to increase sale weight



Growth rate

2000



585 g/day



2022



736 g/day



Increased Pigmeat Output / Yr

Higher born alive

+

Higher growth & sale wt

- Without this higher output non-feed costs would have increased by:

17c/kg or 33%



1,471 kgs

2000

+69%



2,482 kgs

2022

Chasing a different KPI?

- While higher growth rates have delivered improvements ---- is this the correct KPI to maximise?



- Should we be looking at feed cost more to deliver better profitability?



Two Countries

NETHERLANDS



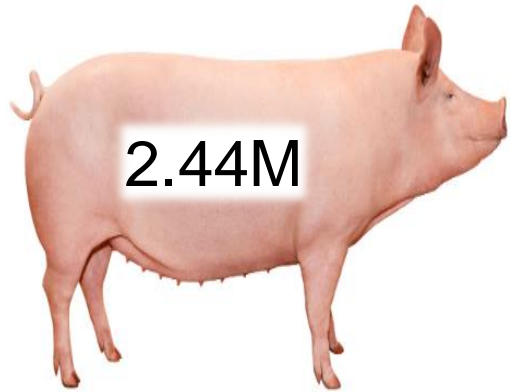
SPAIN



Spain

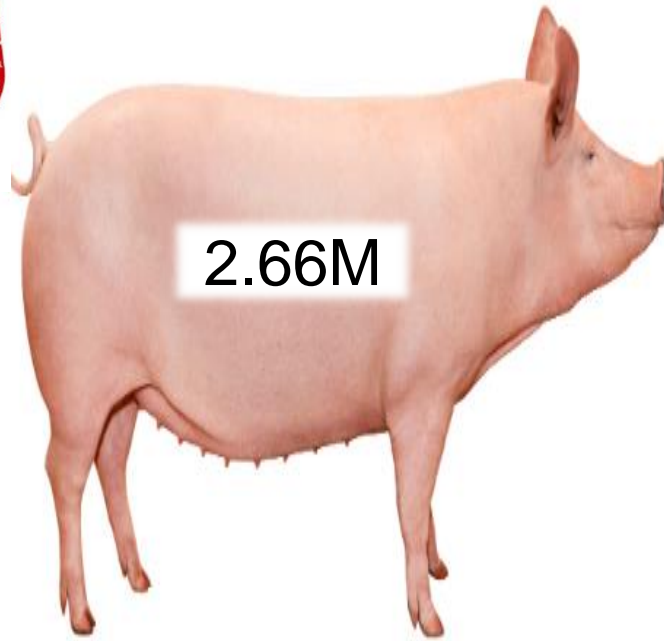


+8%



2.44M

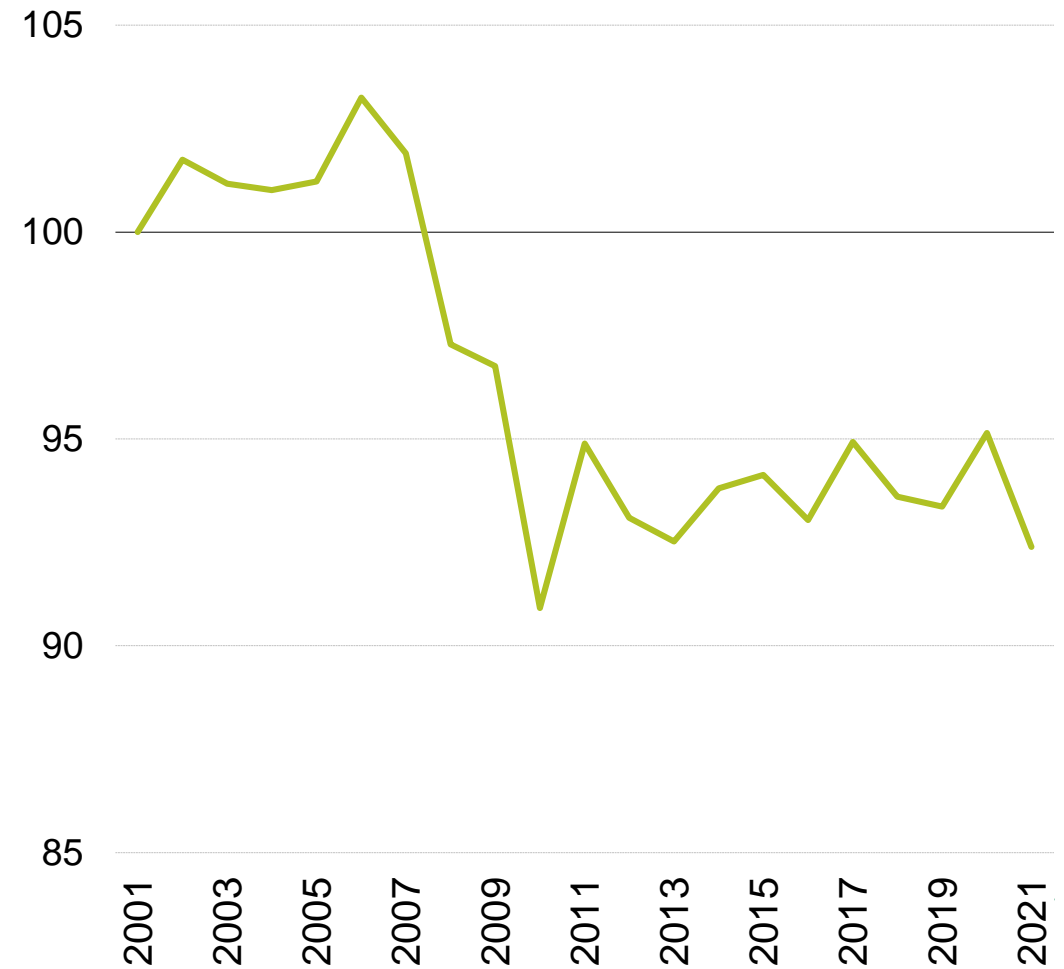
2001



2.66M

2021

EU Pig Population index 2001=100



Spain



A lot of herds using Pietrain



Wean – Sale Growth Rate

633 g/day



Weaning age
23 days



Wean – Sale FCE

2.34 (Irish 2.46)

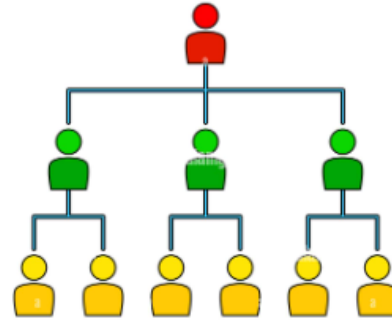


Feed cost= – 3c/kg

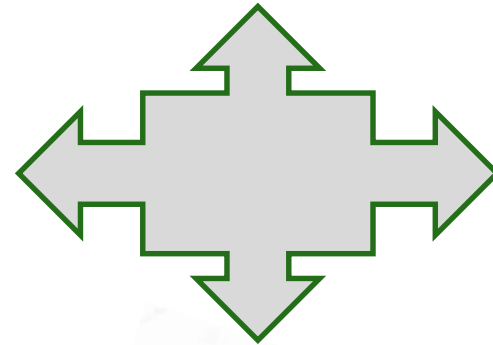
Netherlands



Structure



Housing



Compound Feed Mill



Genetics

Netherlands



€/tonne

Ave. Sow feed cost

402

410

Weaner/rearer feed cost

522

523

Ave. Finisher feed cost

386

388

Total Feed Cost c/kg

134

148

14.4c

Netherlands



Early good gut health,
will pay-off later!



Growth Rate



Weaner ADG

401g

480g

Finisher ADG

891g

909g

Wean to Sale ADG

746g

736g

Feed cost?

Wean – Sale FCE

2.40

2.46



Feed Cost & Profit?



Total Feed Cost c/kg

134

148

14.4c

Extra Pigs Per Sow

4.7c

Earlier Transfer to Finisher

1.7c

Better Wean – Sale FCE

8.0c

Adv. of ‘moderated’ growth

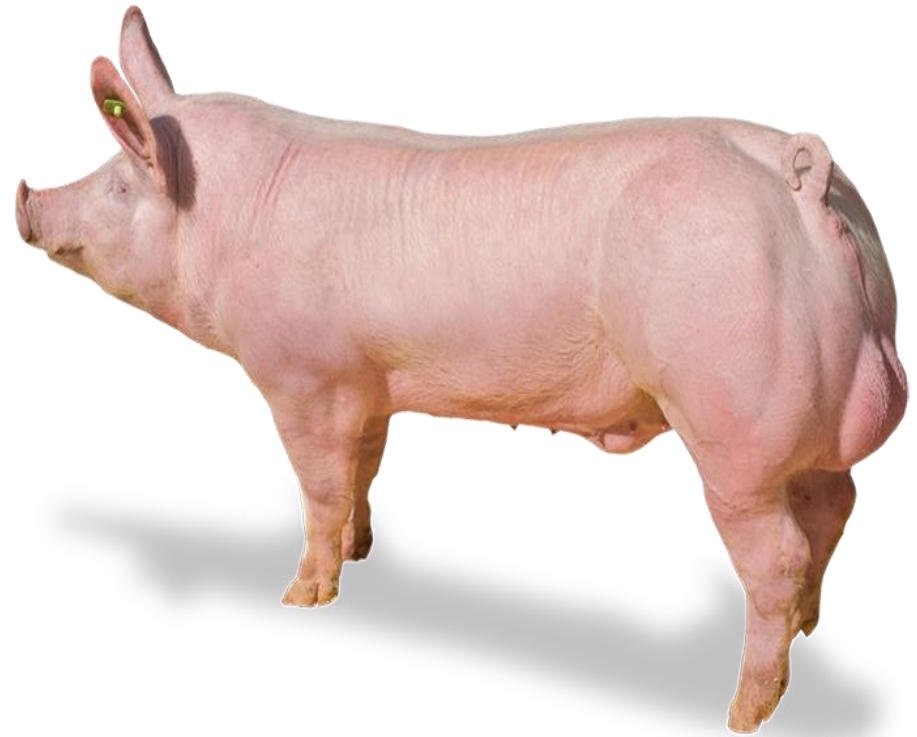
9.7c

Effect of pellets?



Worth €20/tonne!

Take Home Message - Growth rate and Feed Conversion is important



An extra 10c/kg
or nearly €9 /pig
in your pocket!

**Thanks for your attention -- I will
gladly take any questions!**

