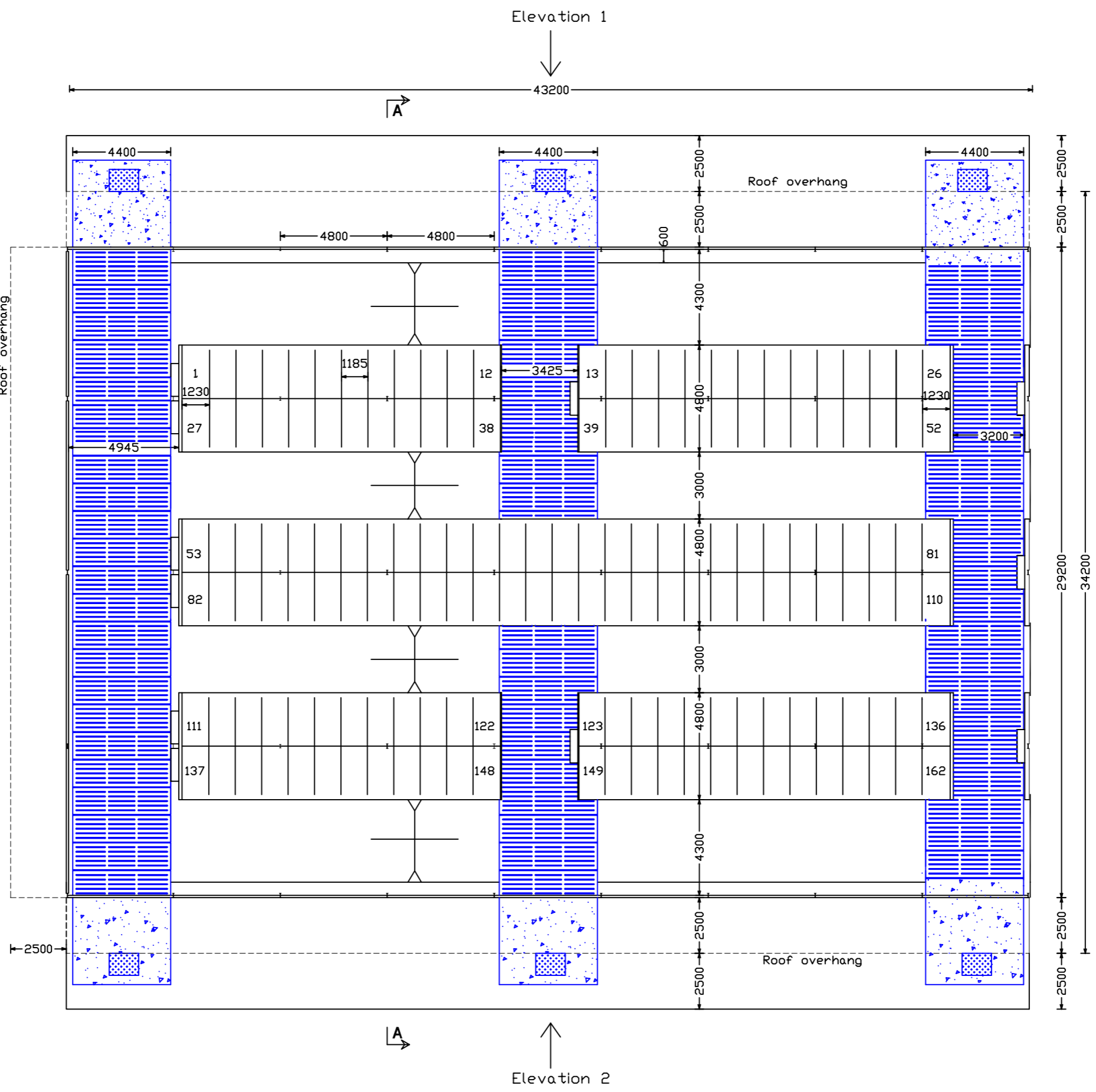


End View 2



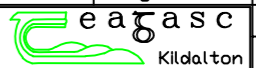
36700mm tank length

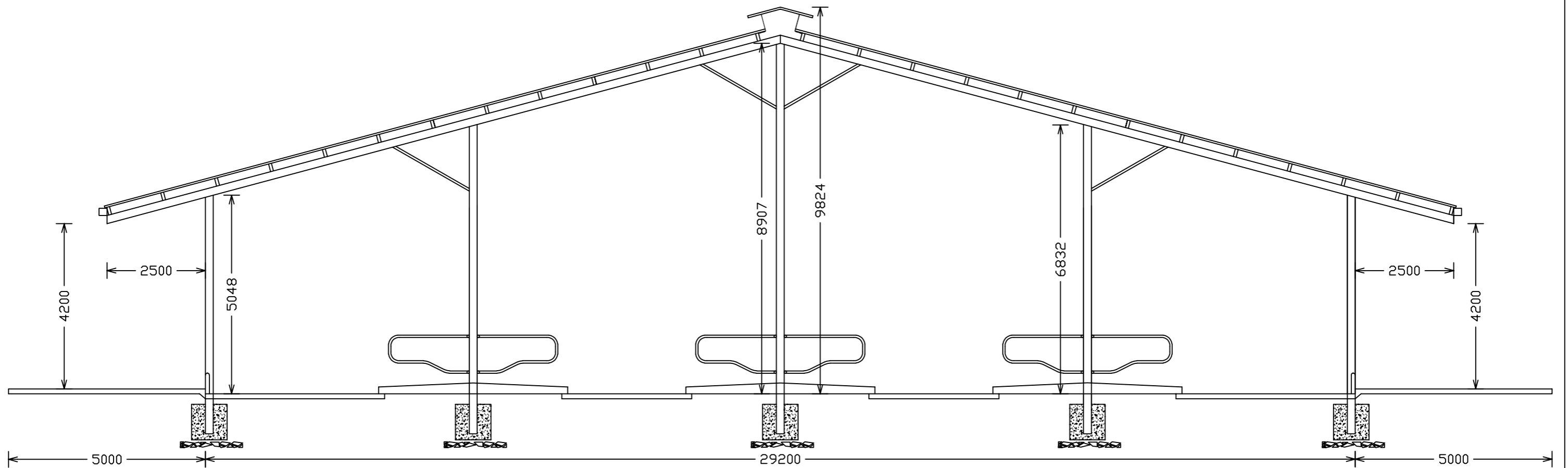
Roof overhang



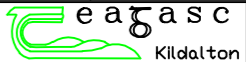
End View 1

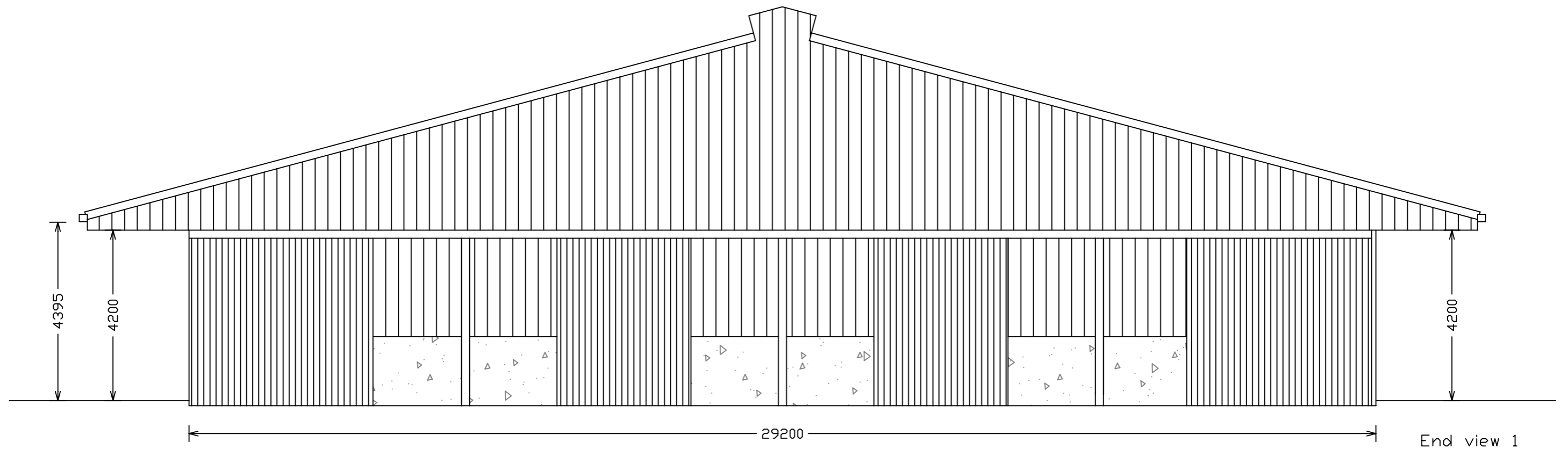
Slatted cubicle house - Floor plan

|   |            |             |      |
|---|------------|-------------|------|
| Title   | Floor plan |             |      |
| Scale   | 1:200      | Drawing No. | 1    |
| Date  | Aug. 2020  | File Name   | DH30 |
|  | Drawn by   | Noel Nugent |      |
|   | Checked by | Tom Fallon  |      |

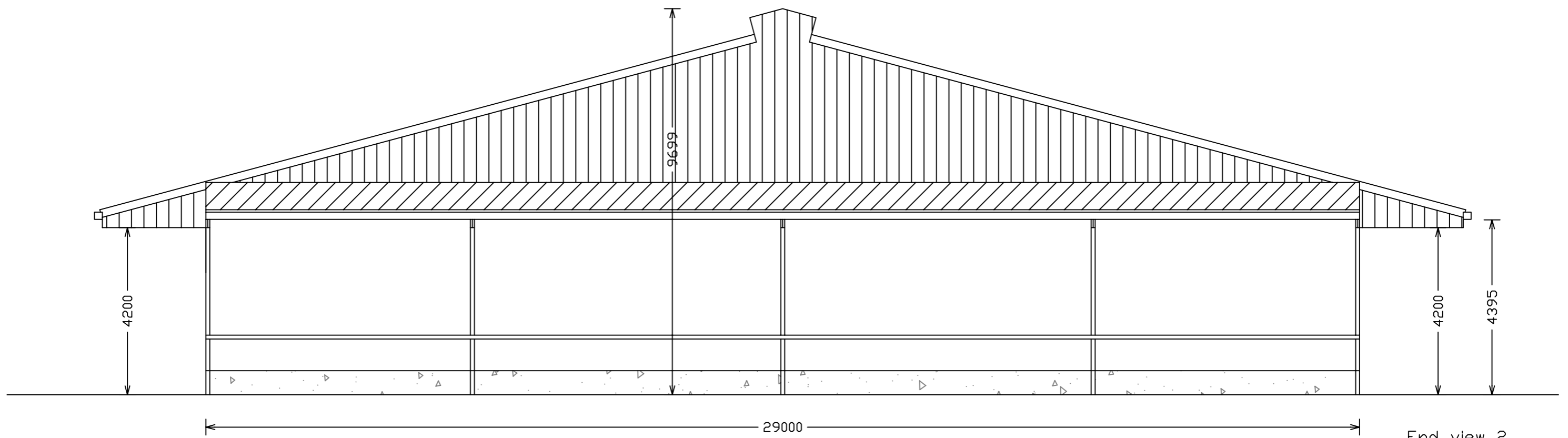


Slatted cubicle house - Section A/A

|   |             |             |      |
|---|-------------|-------------|------|
| Title   | Section A/A |             |      |
| Scale   | 1:100       | Drawing No. | 2    |
| Date  | Aug. 2020   | File Name   | DH30 |
|  | Drawn by    | Noel Nugent |      |
|   | Checked by  | Tom Fallon  |      |



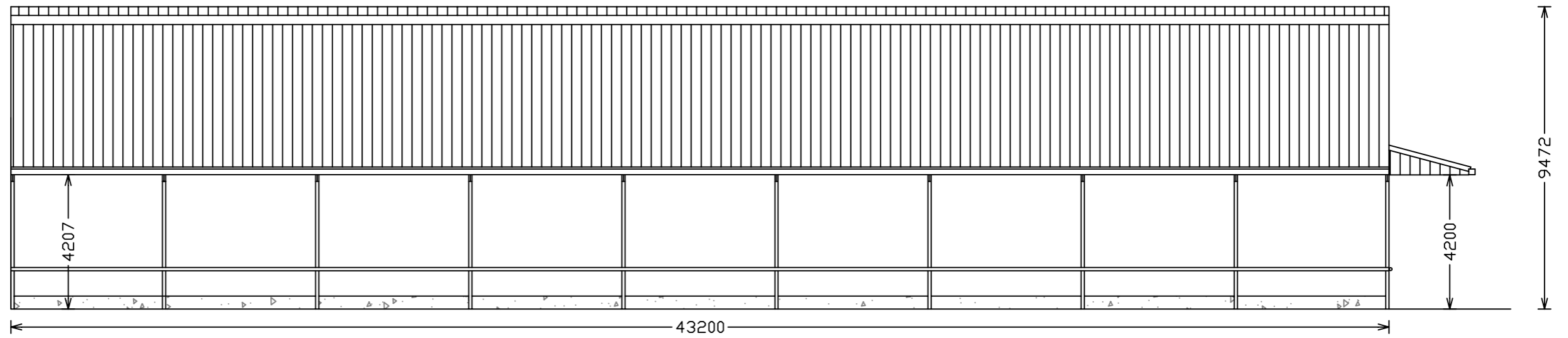
End view 1



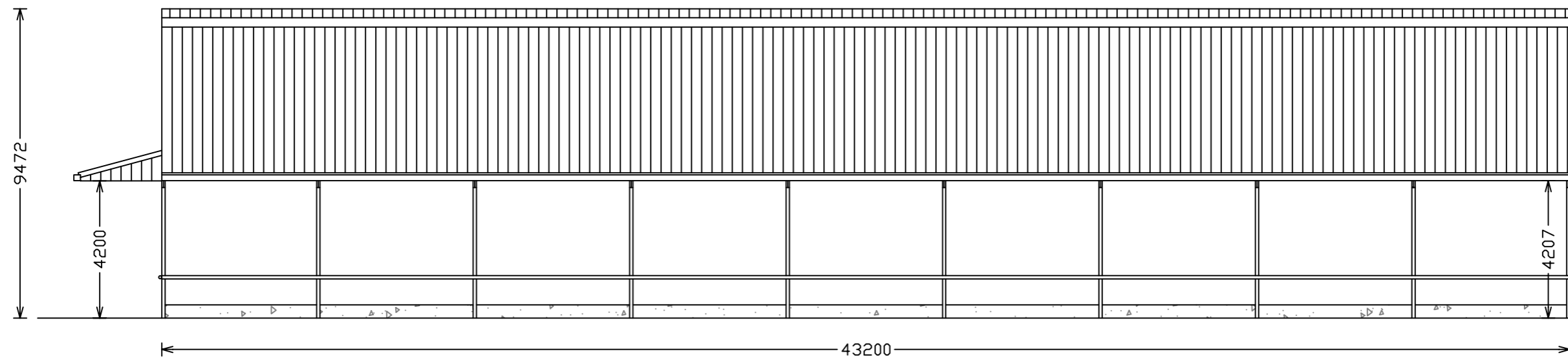
End view 2

Slatted cubicle house - End views

|                          |            |             |      |
|--------------------------|------------|-------------|------|
| Title                    | End views  |             |      |
| Scale                    | 1:100      | Drawing No. | 3    |
| Date                     | Aug. 2020  | File Name   | DH30 |
| <br>Teagasc<br>Kildalton | Drawn by   | Noel Nugent |      |
|                          | Checked by | Tom Fallon  |      |

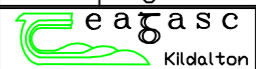


Elevation 1



Elevation 2

Slatted cubicle house - Elevations

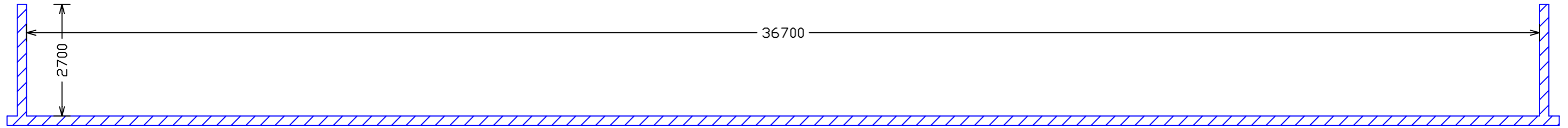
|   |            |             |      |
|---|------------|-------------|------|
| Title   | Elevations |             |      |
| Scale   | 1:150      | Drawing No. | 4    |
| Date  | Aug. 2020  | File Name   | DH30 |
|  | Drawn by   | Noel Nugent |      |
|   | Checked by | Tom Fallon  |      |

There are 3 of these tanks in the slatted cubicle unit

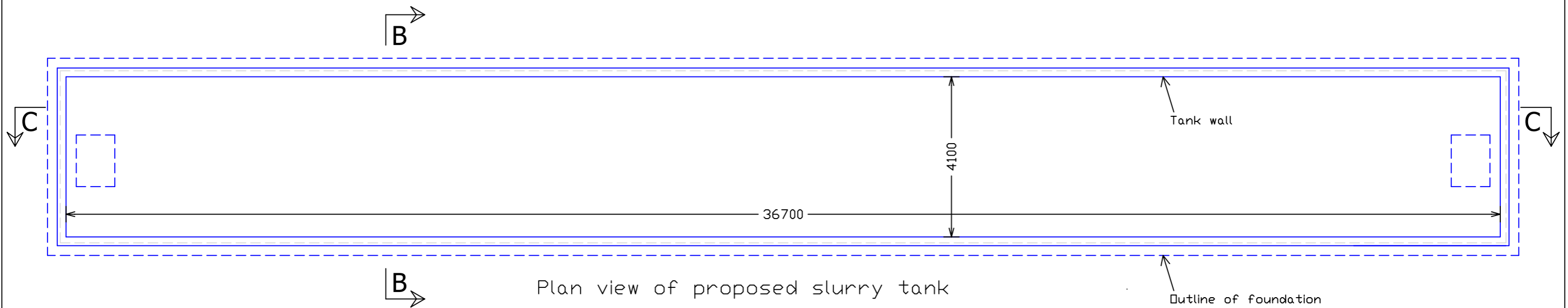
Capacity of each tank = 406.27m<sup>3</sup>

Net Capacity of each tank = 376.17m<sup>3</sup>

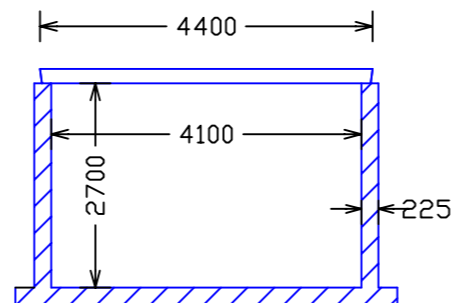
Allowed 0.2m freeboard



Longitudinal Section CC of proposed slurry tank

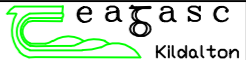


Plan view of proposed slurry tank



Section B/B

Slurry tanks

|   |              |             |      |
|---|--------------|-------------|------|
| Title   | Slurry tanks |             |      |
| Scale   | 1:100        | Drawing No. | 5    |
| Date  | Aug. 2020    | File Name   | DH30 |
|  | Drawn by     | Noel Nugent |      |
|   | Checked by   | Tom Fallon  |      |