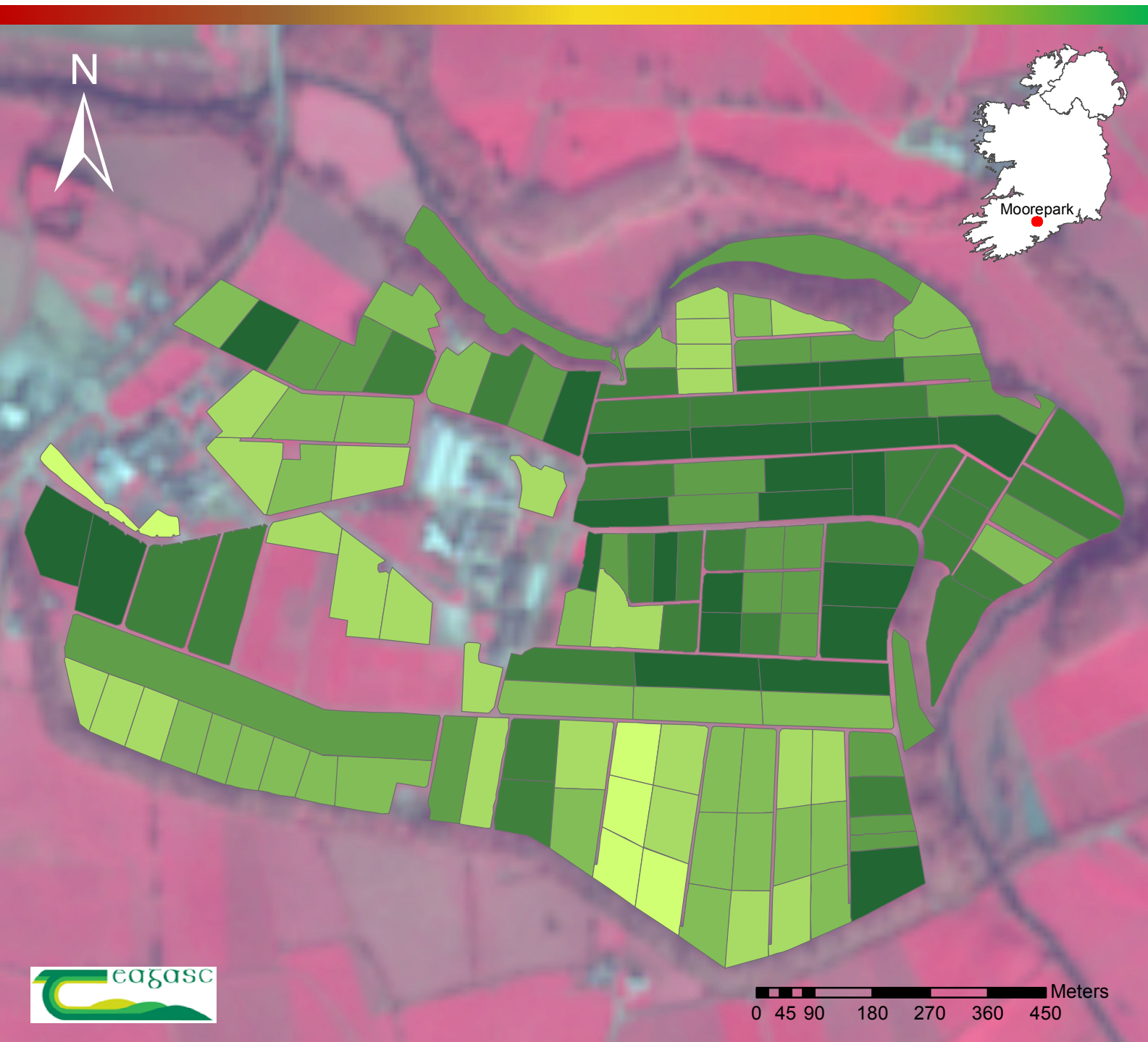
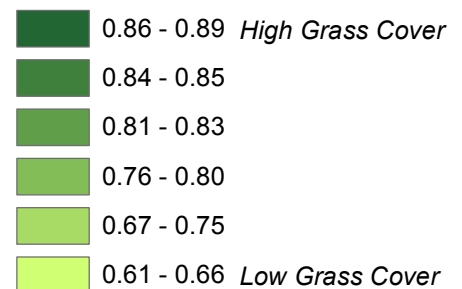


# Paddock-scale grass cover for Moorepark, Co. Cork, Ireland on 20th February 2018



The map shows paddock-scale grass cover for Moorepark. Grass cover is represented using NDVI (Normalised difference Vegetation Index) calculated using Sentinel-2B imagery collected on 20th February 2018. Mean NDVI values were calculated for each paddock. Values ranged from 0.61-0.89. NDVI is direct measure of green vegetation. The NDVI algorithm subtracts the red reflectance values from the near-infrared and divides it by the sum of near-infrared and red bands. The background image is standard false color composite image from Sentinel-2B (10 m Spatial resolution).

## MEAN



IRENET95 Irish Transverse Mercator

Datasets used:  
Sentinel-2B (20th February 2018)

Richa Marwaha  
Department of Agrifood Business  
and Spatial Analysis