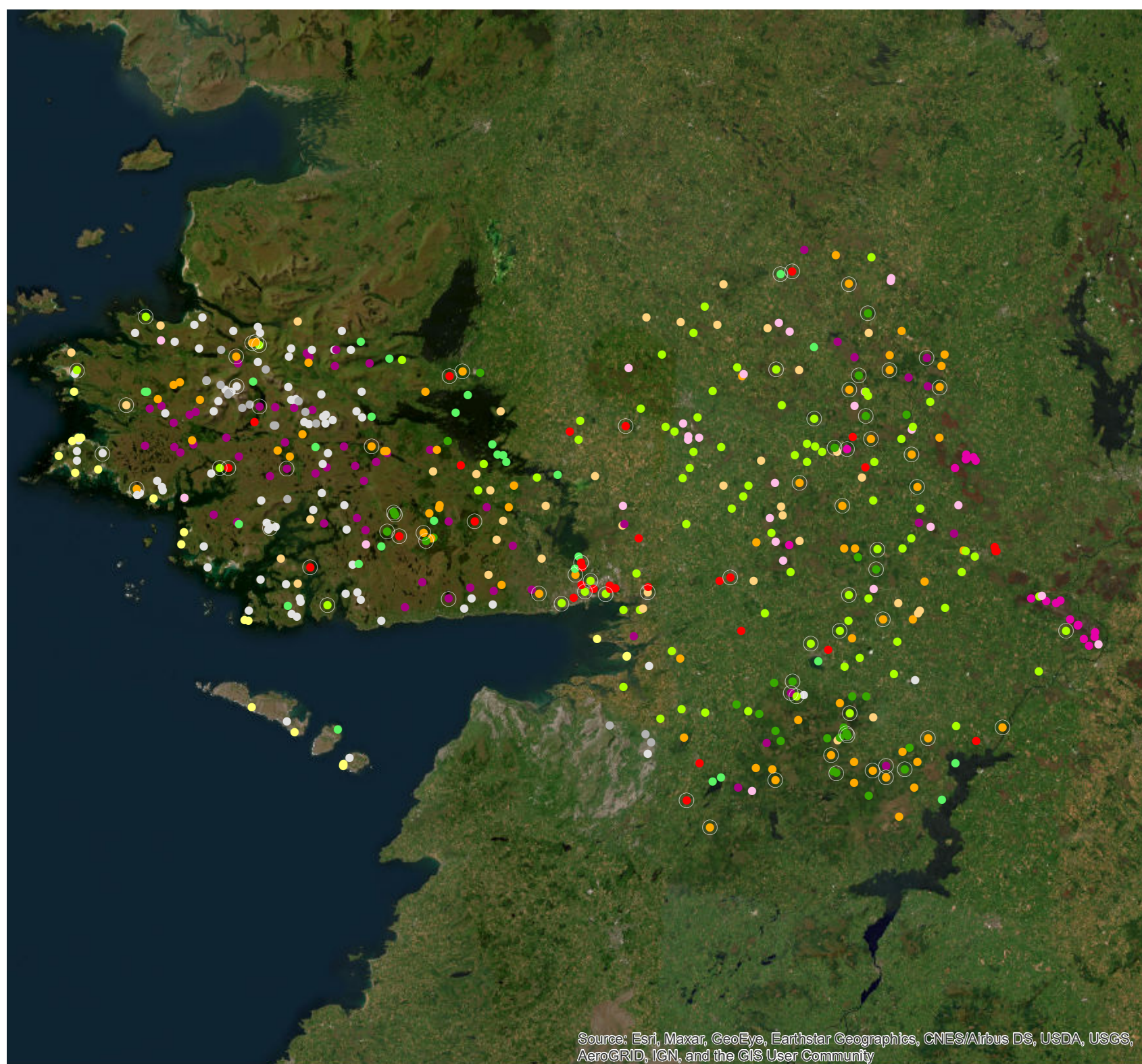


Land Cover Change in Co. Galway 1995-2020



Land cover in 2020

- Built
- Coast
- Rocky
- Exposed Rock
- Water
- Dry Grassland
- Wet Grassland
- Cut Bog
- Cutover or Eroding Bog
- Bog&Heath
- Mature Forest
- Scrub&Young Forest

Points that have changed post '95 are circled in white

Source: Esri, Maxar, GeoEye, Earthstar Geographics, CNES/Airbus DS, USDA, USGS, AeroGRID, IGN, and the GIS User Community



Our Terrain AI project recently hosted an intern, Ryan Mulder, from Aquinas College, Grand Rapids, Michigan, USA. Aquinas College Irish Studies program has been bringing students to Tullycross Co. Galway for 50 years, hosted by Connemara West.

With this history in mind, Ryan used GIS and photo-interpretation to look at how landcover has changed since 1995 by virtually revisiting point observations of landcover from 1995 that were collected as part of an earlier soils project in Teagasc.

The most common change is into scrub&young forestry and the presence of new buildings.